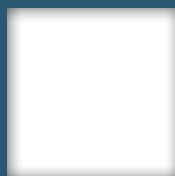
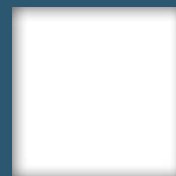
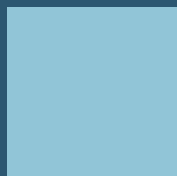
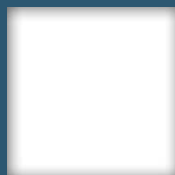
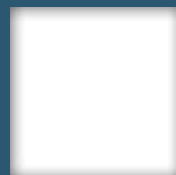
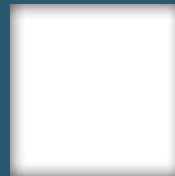
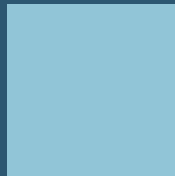
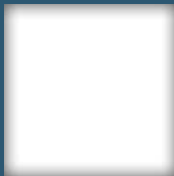
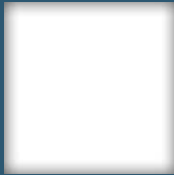


IAPH

Annual report 2014-2015





About IAPH

The International Association of Ports and Harbors (IAPH) was founded in November 1955. Today, as the global alliance of the world port community, it represents some 180 ports and 140 port-related organisations from about 90 countries worldwide. The member ports together handle more than 60% of the world's seaborne trade cargo and nearly 80% of global container traffic.

IAPH meets every two years in odd-numbered years at its World Ports Conference, the largest gathering of the world port community. Port executives and experts coming from all parts of the world exchange views and experiences on a range of issues and challenges.

Between the IAPH World Ports Conferences, the Mid-Term Ports Conference/Board Meeting is held in even-numbered years to discuss common issues as well as internal matters of the association. In addition, members of IAPH's three regions – Africa/Europe, Americas and Asia/Oceania – meet at regional meetings to discuss common issues in a regional context.

IAPH actively addresses critical issues facing the port industry through its technical committees.

Currently, there are nine technical committees, respectively tasked to study the implications and recommend policies and measures in such areas as port communication, finance, safety, security, environment, legal, development, operations, IT application, and cruise. IAPH also proactively plays a significant role in tackling global issues at maritime-related UN agencies and other international organisations. For this, IAPH is especially granted non-governmental organisation consultative status by ECOSOC, ILO, IMO, UNCTAD, UNEP and WCO.

IAPH will continue to play a pivotal role as a unique global forum of the port industry in strengthening co-operation and sharing experiences among the world's ports.

Moreover, to effectively deal with many global issues, IAPH will also actively collaborate with other international organisations for the sustainable development of the world economy.

Vision:

The Global Ports' Forum for Industry Collaboration and Excellence

Mission:

Promoting the interest of ports worldwide through strong member relationships, collaboration and information-sharing that help resolve common issues, advance sustainable practices, and continually improve how ports serve the maritime industries

Objectives to achieve the mission:

- Strengthen relationships among the member ports by facilitating interaction, dialogue, problem-solving, and formulation of best practice
- Leverage member expertise through strong technical committees and programmes that create platforms focused on resolving complex port and maritime industry concerns and building greater efficiency and sustainability for ports worldwide
- Promote and demonstrate IAPH members' leadership and commitment to a cleaner, safer, and more environmentally sustainable industry for the benefit of the global community
- Proactively co-ordinate with other international maritime and related organisations (such as the IMO, PIANC, UNCTAD, WCO, etc) and advocate for global solutions to issues that impact IAPH members





Contents

	President's message	4
	Secretary general's overview	6
	World Ports Conference, Hamburg	8
	Resolutions	14
	Friendly organisations	16
	Technical committees	17
	World Ports Climate Initiative	24
	Women's Forum	26
	Promoting IAPH	27
	Accounts	28
	Membership	32
	Executive committee members	34
	Structure	35



Adapting means **working better**

Your president, Santiago G Milà, looks to the challenges facing members and the need for a collective voice.

It is a great honor to have been elected as IAPH president during the 29th World Ports Conference that took place in Hamburg. I am willing to assist our organisation to highlight worldwide the key role of ports in competitiveness as key links in efficient logistics chains and host of added value activities.

Let me congratulate Grant Gilfillan, my immediate predecessor, on his leadership during the past two years. Under his presidency we were able to undertake a significant work to prepare IAPH for its future that resulted in the proposal of a new IAPH constitution, presented during the Hamburg Conference. The objectives of the changes introduced are to expand IAPH's role, create more value to members and to adapt its processes and structures to the new requirements of our members and market.

Ports are facing important challenges: growing traffic volumes in ports; ever-increasing ship size and how ports may afford the subsequent adaptation of their infrastructures; alliances between shipping lines and global terminal operators, energy prices and the transition to alternative fuels; potential changes in shipping routes following key infrastructure developments (Panama, Nicaragua Canal, opening up of the Arctic Route); and the Smart Port concept are some of them. Our industry faces a period of adaptation so we all need to work together to overcome the difficulties that will arise.

The information in this annual report highlights the achievements of the technical committees and the whole organisation during the past year. Our collaborative work reflects our commitment to the organisation and the good of working together. As you will





read in this report, IAPH is a very active association and the workplans of our committees are a consequence of their will to even increase their activities even more.

The annual report also reflects the excellent and valuable work of our secretariat. It is an IAPH key instrument and its support is essential for achieving our objectives. I take this opportunity to express my sincere thanks to the secretariat's staff for all their relevant work.

I am confident that during the coming years IAPH will reinforce its contribution in strengthening the voice of the world ports. I look forward to it.

Yours truly,

Santiago G Milà

IAPH President

Deputy managing director, Autoritat
Portuària de Barcelona, Spain





Looking back at 2014/2015

Secretary-general Susumu Nause reflects on a busy and productive year for IAPH

World Ports Conference in Hamburg

Conference

The 29th World Ports Conference in Hamburg was a great success. More than 900 people in the global port industry gathered in the historic port city to share the latest information and debate views and opinions with their counterparts from the other parts of the world.

The conference covered a variety of themes but it was under the unique concept: 'smartPORT'. This concept means to manage overall functions of ports, including business transactions, security and safety challenges, environment considerations, and other important issues, in an effective and efficient way in conjunction with an advanced IT system.

In other words, in order to survive in a modern port industry that is full of fierce competition, a port needs to be 'intelligent', efficiently combining all its major functions with the e-system.

New IAPH president and vice-presidents

At the plenary session that followed the working session, the IAPH membership unanimously elected Santiago Garcia Milà, deputy managing director at Autoritat Portuària de Barcelona, Spain, as president for the next term (2015–2017) along with three vice-presidents representing three regions:

- (Americas region) Geir-Eilif Kalhagen, CEO, Port of Longview, USA
- (Asia/Oceania region) Richard Joost Lino, president director, Indonesia Port Corporation II
- (Africa/ Europe region) Hien Sié, managing director, Abidjan Port Authority, Côte d'Ivoire.

In addition, Shanti Puruhita, senior manager of planning and welfare of human resources at Indonesia Port Corporation II, was appointed as the conference vice-president until the 30th Conference in 2017 (see page 10).

IAPH resolutions

IAPH adopted three resolutions (see pages 14-15), which covered an issue about the Hong Kong Convention on 15 May 2009, intending to materialise safe and healthy working conditions for recycling workers while eliminating environmental impact from ship recycling, and the

establishment of the IAPH Women's Forum Scholarship to advance the status of women in the port industry by providing assistance for their continued education and training.

Technical committees, WPCI and IAPH Women's Forum

Technical committees reported the outcomes of their work during 2013–2015 at the committee meetings in Hamburg. Some of the finished products such as the Study on Best Practices of Container Terminal Automation in the World are now available on our website (see pages 22–23).

Technical committees have started their new assignments based on the new workplans that were approved by the board of directors. Some of them will no doubt prove challenging, but I hope they will be able to reach fruitful outcomes through intensive discussions among members over a two-year timeframe.

The team of a WPCI project, LNG-fuelled Vessels and Ports, chaired by Tessa Major, Port of Antwerp, has launched a dedicated website, focusing on liquefied natural gas (LNG) as shipping fuel.

The new LNG bunkering website provides a detailed overview of the use of LNG as ship fuel, laying out the technical requirements for ships, bunkering infrastructure, and vessels under development, as well as the business case for using LNG in the maritime environment (see pages 24–25).

The IAPH Women's Forum had a fruitful luncheon and meeting chaired by Naomi Kogon-Steinberg in Hamburg (see page 26).

IAPH Awards 2015

Two essay contests, the Akiyama Award and the Hamburg Open Award, were run by the Communication and Community Relations Committee. A total of 16 entries were received for both contests.

Contests for IAPH IT Award, IAPH Communications Award, and IAPH Environment Award were run by the respective technical committees (Trade Facilitation & Port Community System Committee, Communication and Community Relations Committee and Port Environment Committee). A total of 28 entries were received for these contests.

The winners of the IAPH Awards 2015 were announced and



awarded their certificates at the plenary session at the Hamburg Conference (see page 11).

Membership

As of 30 June 2015, the association comprises 310 members from more than 90 countries/economies. Since 1 July 2014, the following regular members have joined the association (see page 32):

Regular Members

- GIE HAROPA (Harbours of Le Havre, Rouen and Paris) (France)
- Port of Palm Beach (USA)
- Kobe-Osaka International Port Corporation (Japan)
- Joint stock company NC Aktau International Sea Commercial
- Port (Kazakhstan)
- Sakai Port Authority (Japan)



Statements of accounts for 2014

The financial net worth of the association reached ¥450million as of the end of 2014, having increased by about ¥26million compared with the previous year. This is partly because the annual revenue from the membership dues increased (by ¥9.1million) compared with the budget, but annual expenses, including office expenses, were slightly under budget (by ¥1.5million). However, the greatest reason behind the results is that the investment securities held by the association increased in value in terms of Japanese yen due to its depreciation at the end of the year (see page 28–29).

Budget for 2015/16

The total revenues and expenses for 2015 are estimated at ¥135.3 million and ¥132.6 million respectively with a marginal surplus of ¥2.7 million. Those for 2016 are ¥135.1 million and ¥129.8 million with a surplus of ¥5.3 million (see page 30).

Future conferences

We will meet again at the Mid-term Ports Conference in Panama on 10–13 May 2016. This will be followed by the 30th World Ports Conference in Nusa Dua Bali, Indonesia, on 7–12 May 2017.

Future IAPH conferences confirmed

10–13 May 2016

Mid-term Ports Conference
Panama City, Panama

7–12 May 2017

The 30th IAPH World Ports Conference
Nusa Dua Bali, Indonesia



World Ports Conference in Hamburg

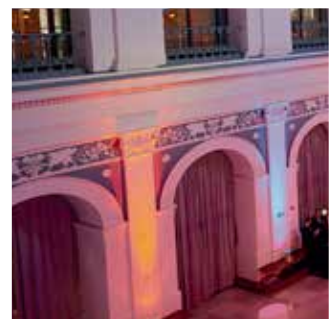
Smart conference in the smartPORT city of Hamburg

The 29th IAPH World Ports Conference provided a valuable forum for the industry to debate issues facing members ranging from the effect of global economics to the environment and technology – which made its own contribution to how members took part in proceedings

More than 900 delegates, accompanying persons, guest speakers, and exhibitors from across the world gathered in Hamburg for the 29th IAPH World Ports Conference in Hamburg, Germany, on 1–5 June under the conference banner theme of City of Hamburg – Calling at the smartPORT.

The conference host, Hamburg Port Authority, represented by Jens Meier, chairman of the management board, provided an

excellent stage on which to debate such hot topics as mega-ships and their impact, global economy trends, global port competition, clean port air solutions, port logistics, international legal issues, cruise, etc. The debate was enriched and reinforced by expert input and contributions from an excellent line-up of guest speakers representing port authorities, terminal operators, shipping lines, logistics service providers, transport sector consultants, futurists, politics, and science.





The Hamburg conference was also smart in that our host introduced, for the very first time in the history of IAPH conferences, a new IT application enabling participants to view the conference programme and presentations on their smart phones and tablet computers, and to interact with speakers and moderators via live polls at working sessions on a real-time basis. In addition, the hosts organised port tours on four different topics: port infrastructure; vessel traffic services (VTS); port logistics services; and on-shore power supply (OPS) for cruise. These provided the delegates with an excellent vision of what a smart port would be like today and in the near future by showing us specific samples of, and solutions for, intelligent port management and operations.

Strategy meeting – Review and Revision of IAPH Constitution and By-Laws

In accordance with the Resolution on Creation of a Council to replace the Board of Directors and the Executive Committee adopted on 7 April 2014 by the IAPH board of directors at the mid-term conference in Sydney, Australia, a small group of members appointed by the then-president Grant Gilfillan met in Barcelona on 15 September 2014 and in Tokyo on 7–8 April 2015, to discuss ways and means of reviewing and revising the IAPH Constitution and By-Laws.

Consequently a new draft IAPH constitution was developed by the group in May 2015 for scheduled submission to the plenary of the June 2015 Hamburg Conference.

However, as a result of extensive discussion by the group meeting on 30 May and by the board of directors meeting on 1 June 2015 in Hamburg, it was decided that article XI of the constitution only be amended to allow for meeting and voting by correspondence, so that IAPH may continue the task of changing the constitution through the process of consultation and feedback after the Hamburg Conference. The amendment was voted on at the plenary session on 4 June 2015, and the amended article now reads as follows:

“This Constitution may be amended by a two-third vote of the Regular Members of this Association having the right to vote: at any Conference, provided that notice of such amendment is included in the Conference Agenda of such Conference, or by meeting and voting by correspondence by the Regular Members of this Association on the basis of Article X – Rules and Regulations Governing Meeting and Voting By Correspondence of the By-laws of the International Association of Ports and Harbors.”





Decisions made at meetings of board and plenary

1. Settlement of accounts for 2014 and budget for 2015/16 were approved.
2. Santiago Garcia-Milà, deputy managing director, Autoritat Portuària de Barcelona, Spain, was unanimously elected IAPH president for a two-year term (2015-2017), along with three regional vice-presidents:
(Americas region) Geir-Eilif Kalhagen, CEO, Port of Longview, USA
(Asia/Oceania region) Richard Joost Lino, president director, Indonesia Port Corporation II
(Africa/ Europe region) Hien Sié, managing director, Abidjan Port Authority, Côte d'Ivoire
3. Three resolutions were adopted:
 - Resolution on urging ratification of the Hong Kong Convention
 - Resolution on establishing the IAPH Women's Forum Scholarship
 - Resolution expressing appreciation (to the conference host)
4. Grant Gilfillan, CEO and director, Port Authority of New South Wales, Australia, was elected as an IAPH honorary member for having completed his two-year term (2013–2015) as IAPH president.
5. Amendment of the IAPH constitution: to enable IAPH to continue the task of changing the constitution through the process of consultation and feedback with members after the Hamburg conference, it was decided that article XI of the constitution be amended to allow for meeting and voting by correspondence that was not provided before. Read the text of amended article XI again on page 9.
6. Future IAPH conferences
 - IAPH Mid-term ports conference in 2016
The Mid-term ports conference will take place in Panama City, Panama, 10–13 May 2016, hosted by Panama Maritime Authority
 - The 30th IAPH World Ports Conference in 2017
The conference will take place at Bali Nusa Dua Convention Centre in Bali, Indonesia, 7–12 May 2017, hosted by Indonesia Port Corporations I, II, III and IV. Shanti Puruhita, senior manager of planning and welfare of human resources, Indonesia Port Corporation II, was appointed IAPH conference vice-president for the event.





IAPH Awards 2015

Five competitions were held in the last term of 2013/2015 to compete for excellence in various fields of port management and operations. Award presentations took place during the conference and the winning entries are available online on the IAPH website (for IAPH members with their password) at:

<http://www.iaphworldports.org/CommitteeRoom.aspx#Awards2015>

Akiyama Award

Sujeewa Liyanage, Sri Lanka Ports Authority, Sri Lanka
'Colombo, the golden gate to south Asia ready to welcome mega carriers'

Hamburg Conference Open Award

Stephanie Bowman, commissioner, Port of Seattle, USA
Clare Petrich, commissioner, Port of Tacoma, USA
'Innovative response to big ship growth: creating a seaport alliance'

Port Communication Award

Gold

Port of Gothenburg, Sweden
'Made in Sweden'

Silver

Ports of Stockholm, Sweden
'Social media: Ports of Stockholm'

Bronze

Port of Longview, USA
'Becoming Washington's working port - The Port of Longview's banding journey leads them back to their roots'

Port Environment Award

Gold

Port of Santa Marta, Colombia
'Environmental and operational benefits from the technological renovation of the Port Authority of Santa Marta'

Silver

JadeWeserPort Realisierungs GmbH & Co KG, Germany
'Langwarder Groden (coherence zone for a deep-water port)'

Bronze

bremenports GmbH & Co KG, Germany
'Innovative new building of a LNG-powered dredging barge in the ports of Bremen and Bremerhaven'

Information Technology (IT) awards

Gold

Port of Beirut, Lebanon
'Port of Beirut operations and management System (POMS)'

Silver

PORTIC, Barcelona, Spain
'From a paperless port towards a smart port'

Bronze

JadeWeserPort Realisierungs GmbH & Co. KG, Germany
'SMART SC – ebusiness standardization in the maritime supply chain'



Port Communications Award Gold: Cecilia Carlsson (left), vice president communications, Port of Gothenburg, Sweden



Port Environment Award Gold: Mauricio Suarez Ramirez (left), CEO, Port of Santa Marta, Colombia



Working sessions programme: 2–4 June 2015 (moderator: Max Boodie)

Keynote address

- The digital transformation of business and society, and its impact on the shipping, ports and maritime industries by 2030
Gerd Leonhard, futurist, author, and CEO of The Futures Agency

Session 1: Transformations and challenges in the global economy

- The Importance of smartPORTs in global competition – challenges and solutions
Marco Lippuner, senior vice-president infrastructure and industry sales, Siemens energy management division
- What are the threats and opportunities for international shipping in the future?
Peter Hinchliffe OBE, secretary-general, International Chamber of Shipping

Session 2: Bigger vessels – bigger challenges

- The global economy at the crossroads – recent developments and perspectives
PD Dr Christian Growitsch, director of the Hamburg Institute of International Economics (HWWI)
- Mega-ships: still for the common good?
Olaf Merk, administrator ports and shipping, International Transport Forum (ITF) at OECD
- When a mega-carrier enters the port: experiences of a sea captain
Capt Salvatore Cafiero, environmental manager and training officer at MSC P/Sorrento, Italy
- Traffic control: challenges and solutions regarding the navigation of mega-ships on the River Elbe and in the Port of Hamburg
Jörg Pollmann, harbour master of the Port of Hamburg
- Challenges and solutions dealing with large container vessels – the perspective of a terminal operator
Benjamin Lai, managing director DaChan Bay Terminal, Modern Terminals Limited
- Future prospects: what will be the impact of ship size development? Are there limits to growth? Who benefits, who loses out?
Group discussion

Session 3: smartPORT logistics: challenges

- IT is ready for smart solutions
Volker Worthmann, director transport and logistics, Lufthansa Industry Solutions
- Why do ports have to become smart?
Wim Elfrink, executive vice-president, industry solutions and chief globalisation officer at Cisco

Session 4: smartPORT logistics: solutions

- smartPORT Hamburg – How to dress for success?
Jens Meier, chairman of the management board, Hamburg Port Authority
- An Arabian perspective on industry trends: a view from the bridge of DP World
Patrick Bol, director global operations, DP World head office, Dubai
- What can a port do to effectively manage landside congestion – truck marshalling automation and key performance indicator control as a solution
Michael Pal, principal transport analyst for Fremantle Ports, Australia
- smartPORT Valencia – challenges, solutions and visions
José García de la Guía, director of information technologies, Valencia Port Authority
- Demands on intelligent ports: where is there a need for action?
Group discussion (sessions 3 and 4)

Session 5: smartPORT energy: challenges

- International environmental standards at sea – development, implementation and monitoring. Consequences and future developments
Monika Breuch-Moritz, president of the Federal Maritime and Hydrographic Agency in Hamburg and Rostock
- How even minor changes can increase energy efficiency significantly
Henning Kinkhorst, managing director of HPC Hamburg Port Consulting

Session 6: smartPORT energy: solutions

- smartPORT – what does it mean for Ports of Stockholm?
Gun Rudeberg, legal counsel and head of environmental affairs at Ports of Stockholm
- smartPORT energy – experiences of the Port of Hamburg
Lutz Birke, head of corporate management and public affairs, Hamburg Port Authority
- Global transport needs sustainable ports - LNG as part of green ports
Dipl-Ing Robert Howe, managing director, Bremenports
- Alternative actions in the times of the energy transition: how 'green' do ports have to be?
Group discussion (sessions 5 and 6)

Session 7: Cruise shipping

- Cruise ships and ports: now and future trends
Douglas Ward, author, BERLITZ Cruise Guide



- Starting to grow: cruise tourism as a complementary business field in Busan

Cha Min-sik, vice-president of Busan Port Authority

- Managing the growth of turnaround cruise operations in sensible surroundings

Roberto Perocchio, managing director of Venezia Terminal Passeggeri

- Development of the cruise shipping industry in the Port of Hamburg

Michael Ungerer, president, AIDA Cruises

- Smart terminals – smartPORTs: what can ports contribute to a dynamic cruise industry?

Bo Larsen, vice-president for port engagement and European executive partner members in Europe, CLIA

- The world is going on a cruise: does growth in tourism come at the expense of the environment?

Group discussion



- The importance of law for trade and ports
- Group discussion**

Sessions in parallel

Session 8-1: Clean air in ports

- Clean air in ports - potential for improving air quality

Alexander Porschke, president of NABU Hamburg (Nature and Biodiversity Conservation Union)

- Clean air solutions in the Ports of Copenhagen and Malmö

Johan Röstin, CEO of Copenhagen Malmö Port

- Clean air 2.0

Gene Seroka, executive director, Port of Los Angeles

- Hong Kong's action to clean up maritime emissions

Christine Loh, undersecretary for the environment, Hong Kong Special Administrative Region Government

- Corporate responsibility and business challenge

Group discussion

Session 8-2 (forum): How diversity contributes to smart thinking

Dr Geraldine Knatz, professor of the practice of engineering and policy, University of Southern California, and retired executive director, Port of Los Angeles

Dr Maria Carolina Romero, associate professor at the World Maritime University in Sweden

Dr Phanthian Zuesongdham, innovation and process management, Hamburg Port Authority

Dato' Capt David Padman, general manager, Port Klang Authority

Session 8-2: Ports and global trade – legal trends and challenges

- What is the role and history of the United Nations for the maritime Industry?

Michael Shewchuk, legal officer, division for ocean affairs and the law of the sea, United Nations

- Law as location factor and a Hanseatic League for swift and reliable international dispute resolution

Frans van Zoelen, CLO of Havenbedrijf Rotterdam (Port of Rotterdam Authority)

- Litigation and arbitration on site – a location factor in global competition

Dr Christoph Hasche, honorary secretary-general and vice-chairman of the German Maritime Arbitration Association

- smartPORTS need smart insurances

Marcus John, director, Thomas Miller (Australasia)



Resolution on urging ratification of the Hong Kong Convention

Adopted on June 4, 2015 at the 29th IAPH World Ports Conference in Hamburg, Germany

Being aware that ship recycling is an essential process for maritime industry from the perspective of enhancing safety and efficiency which significance is even higher through the acceleration of fleet renewals which is taking place at the moment,

Being further aware that the scrapping of the majority of ships is taking place in only a few states under dangerous and unhealthy working conditions and with affecting serious impact on maritime environment,

Recognizing that in close cooperation with the International Labour Organization (ILO) and the Parties to the Basel Convention, the States in the International Maritime Organization (IMO) adopted the Hong Kong Convention on May 15, 2009, intending to materialize safe and healthy working conditions for recycling workers with eliminating environmental impact from ship recycling,

Recognizing further that the Hong Kong Convention imposes strict legislative requirements both to ship owners and recycling yards,

Acknowledging that the Hong Kong Convention is left ineffective with getting only few ratifications, as many other states have concerns about future capacities of ship recycling

yards which are able to comply with the requirements of the Hong Kong Convention,

Taking in mind further that the Europe Union implemented its own regulation on ship recycling on December 30, 2013, applying both onto ships flying EU Member States' flags and also other ships calling EU states' ports, with the aim to come to the early implementation of the Hong Kong Convention in the EU,

Noting that the EU is now in the process of assessing conditions of recycling facilities for listing on the European List as their approved facilities complying with EU requirements,

On a proposal duly seconded, it is unanimously resolved that

1. IAPH appreciates the efforts made by IMO and other international organizations for establishing new schemes for ship recycling to ensure safe, healthy and environmentally sustainable conditions of ship recycling.
2. IAPH also appreciates the endeavor of the European Union to accelerate the process of reforming ship recycling by implementing a scheme in the EU.
3. IAPH urges States to accelerate their ratification process for the Hong Kong Convention and initiate and support financial schemes which makes it possible to come to a responsible way of recycling ships.



Resolution on establishing the IAPH Women's Forum Scholarship

Adopted on June 4, 2015 at the 29th IAPH World Ports Conference in Hamburg, Germany

WHEREAS, the International Association of Ports and Harbors (IAPH) resolved to create the IAPH Women's Forum and to create an annual scholarship intended for the training of women in ports at its Board of Directors meeting in Jerusalem, Israel, May 2012,

WHEREAS, the IAPH aspires to advance the status of women in the port industry, especially at IAPH member ports, by providing assistance for their continued education and training;

NOW, THEREFORE, the IAPH meeting at its Plenary on 4 June in Hamburg resolves that:

1. It will create the IAPH Women's Forum Scholarship consisting of two types of scholarship programs intended for young female staff employed at IAPH member ports to be

implemented in the next term of 2015-2017:

- the Women's Forum Biennial Training Scholarship to enable them to attend advanced port training program overseas; and
 - the Women's Forum Annual Meeting Scholarship to enable them to attend IAPH Conference and exchange information and experience at the IAPH Women's Forum.
2. An ad-hoc committee known as the Women's Forum Scholarship Committee will be established, including the Chair of the IAPH Women's Forum, to oversee the program and select the awardees in consultation with the Communications and Community Relations Committee administering IAPH Training Program Scholarship.

Resolution on Expressing Appreciation

Adopted on June 4, 2015 at the 29th IAPH World Ports Conference in Hamburg, Germany

WHEREAS, the 29th Conference of the International Association of Ports and Harbors convened at the Convention Center Hamburg has been in all respects successful due to the excellent organization and execution of the business and social programs;

NOW THEREFORE IT BE RESOLVED that on this Fourth Day of June on the occasion of the Plenary of the 29th Conference, the International Association of Ports and Harbors, assembled in Hamburg, Germany, from June 1 to 5, 2015, hereby extends its gratitude to the following;

Mr Jens Meier: Chairman of the Management Board, Hamburg

Port Authority and Mr Olaf Scholz First Mayor, Free and Hanseatic City of Hamburg

AND IT BE FURTHER RESOLVED that our thanks also go to the Chairmen and Speakers of the entire conference, to the Sponsors and Exhibitors, to other generous sponsors, to the media for their respective support and contribution to the success of the Conference;

Also those in various capacities, including spouses, partners and accompanying persons for their participation in the 29th World Ports Conference of this Association.



Friendly organisations

To enhance mutual understanding and co-operation, a memorandum of understanding (mou) was concluded in June 2015 with AIVP (the Worldwide Network of Port Cities) based in Le Havre, France. As a result, IAPH is now in co-operation with the following five friendly organisations: PIANC (2001), AAPA (2004), OAS-CIP (2005), ESPO (2012), and AIVP (2015).

The then-IAPH president Grant Gilfillan spoke at a session entitled 'The social license to operate - working with your local communities' at the American Association of Port Authorities' (AAPA) annual convention, 9–13 November 2014, in Houston, Texas, USA. The session addressed community concerns about traffic congestion, environmental impact of port operations, and

other quality-of-life issues as a common port priority, where four speakers, including President Gilfillan, shared their best practice in community outreach and education about the economic benefits of ports.

Chair of the IAPH Cruise Committee, Monica Bonvalet, Grand Port Maritime de Marseille, France, and IAPH honorary member, Naomi Kogon-Steinberg, USA, attended the cruise seminar of the AAPA, held on 10–12 February 2015 in Fort Lauderdale, Florida, USA. During the seminar, they met Michael Vanderbeek, chair of the AAPA's Cruise Committee to explore potential areas of cooperation between the two organisations regarding cruise issues.



Grant Gilfillan at the AAPA annual convention 2014



Technical committees

Technical committees, being regarded as the backbone of IAPH, are tasked with studying a range of common-interest issues and concerns to the world port community.

They are also assigned to prepare or propose IAPH position papers and resolutions on critical issues in maritime fields for submission to international agencies, including IMO, to advocate the principles of IAPH.

In Hamburg, in June 2015, nine technical committees discussed the final outcomes of their efforts during the past two years and several final technical reports were added to the

IAPH library on the website. For the full minutes of each committee meeting, please access each 'committee room' of the IAPH website at:

<http://www.iaphworldports.org/CommitteeRoom.aspx>

The technical committees also examined two IAPH resolutions for adoption at plenary session in Hamburg. (Please see pages 14-15 for Resolutions)

1 Group for Communications & Training (Group I)

1.1 Communication and Community Relations Committee

Chair: Arley M Baker, Port of Los Angeles, USA

Mission:

1. Provide a training program for developing ports.
2. Help the Tokyo office promote IAPH, as possible and permitted.
3. Provide a forum for port public relations representatives to network and share best practices in community relations.

Work plan:

1. Assist and implement the Essay Contest to culminate in the awarding of the Akiyama Prize and the Bali Open Prize at the 2017 conference. The essay application and format will be updated and finalised at the Mid-term Panama conference.
2. Assist and implement the 'IAPH Training Scholarship' and support the IAPH Women's Scholarship as necessary (working with Women's Forum chair)
3. Review, monitor and improve the above two schemes, as and when necessary.
4. Complete creation of a new website for IAPH.
5. Formulate a Communications Plan for IAPH.
6. Branding for IAPH.
7. Review and enrich the communication case studies.



8. Assist and implement IAPH Communication Award.
9. Post the essays in the community case studies section of IAPH website.
10. Recruit more port PR/communications professionals to the committee.
11. Share best practice and company documents, including annual reports e-zines, promotional campaigns and special event materials/plans.
12. Continue support and expansion of IAPH social media platforms.



1 Group for Communications & Training (Group I)

1.2: Port Finance & Economics Committee

Chair: Dov Frohlinger,
Israel Ports Development and Assets, Co, Ltd, Israel



Mission:

1. Monitor, collect, analyse and disseminate information relative to port accounting principles, budgeting, project financing, financial instruments/lending, economic feasibility studies, port economic contributions studies, tariffs and other issues related to the port finances and economics.

Work plan:

1. Collection of industry-wide financial and economic statements that will be available in IAPH library.
2. Preparation of industry-wide list of CFOs with their contact information.
3. Collection of best practices in regard to concession tenders and contracts.

1.3 Cruise Committee

Chair: Monica Bonvalet,
Grand Port Maritime de Marseille, France



Mission and work plan:

1. Assist ports to attract, develop and maximise the benefits of cruise operations and marketing of port cruise facilities and cruise itineraries.
2. Assist ports and cruise lines to develop better relationships between the ports, the cruise lines, the cruise operators and the cruise facilities management, to include, among others, discussions on best practice and implementation of leasing agreements between ports and terminal operators.
3. Monitor, collect, analyse and disseminate information pertaining to the latest developments in the global cruise industry including passenger statistics, ship size trends, safety of cruise ships and environmental matters.
4. Monitor, collect, analyse and disseminate information pertaining to planning, design, construction, maintenance and improvement of cruise terminals and related navigation channels, cruise port services, and cruise port operations/management.
5. Monitor, collect, analyze and disseminate information pertaining to city-port relationships as far as cruise operations are concerned and showcase the current practices in this respect.
6. Assist ports to develop a good relationship with cruise-related organisations such as global and regional cruise associations and local tourism organisations.
7. Create the requisite social media and communications means (Facebook page, specific newsletter, etc) as far as they relate to cruise operations.
8. Create new IAPH Cruise Award for recognising ports which have performed excellent practices for enhancing cruising business in ports.





2 Group for Port Safety, Security & Environment (Group II)

2.1 Port Safety & Security Committee

Chair: K Subramaniam,
Port Klang Authority, Malaysia



Mission:

1. Collect, interpret and summarise for the Association the latest relevant information concerning port safety and security requirements, initiatives and best practices.
2. Provide analysis and draft positions on port safety and security matters to be placed on the agenda of international organisations such as IMO, ILO, ISO, WCO, IALA, etc.

Work plan:

1. Provide commentary or report on port safety and security related developments both at UN and other international organisations, focusing on their effects and implications to port industry with special attention for matters relating to piracy.
2. Monitor developments of port security introduced or practised in ports and provide relevant information to the association regarding proposed changes and best practices. In particular:
 - i) Review ISPS Code practices implemented at ports since July 2004 and collect related case examples of problems or best practices at ports;
 - ii) Collect best practices of security measures including advanced information technology solutions

implemented at ports.

3. Monitor developments of supply chain security at ports and analyse their implications to ports. In particular:
 - i) Monitor initiatives or developments for supply chain security including AEO (authorised economic operators) introduced by countries in the world;
 - ii) Collect and disseminate best practices and technical developments on port and supply chain security.
4. Monitor developments and collect best practices on port safety for dissemination among members, including:
 - i) Handling of dangerous goods in the port environment, paying attention to the risk of fumigated containers, new fuels for vessels eg LNG;
 - ii) Developments in safety measures at ports to address the risks associated with over-weight containers and improperly packed containers;
 - iii) Handling of solid bulk cargo and compliance to safety measures for safe carriage by sea;
 - iv) Developments in safety measures at ports associated with risks of defective yard equipment;
 - v) Developments in safety measures at ports associated with mooring accidents.
5. Monitor and collect best practices on contingency plans for ports.
6. Increase cooperation with port safety-related technical organisations (PIANC, ICHCA, IALA, OCIMF) to ensure that their recommendations are aligned with the objectives of ports.





2 Group for Port Safety, Security & Environment (Group II)

2.2 Port Environment Committee

Chair: David Padman,
Port Klang Authority, Malaysia



Mission:

1. Monitor trends in environmental areas that affect ports including, but not limited to, air quality, dredging/ dredged material disposal, soil remediation, ballast water, habitats, ship wastes and reception facilities.
2. Provide information on port environmental matters to the Association concerning positions put forth on behalf of IAPH at international organisations such as IMO, IALA, UNCTAD, ILO, etc.
3. Develop a Green Port Program and develop a framework.
4. Coordinate with PIANC Environmental Commission by active participation of IAPH members on PIANC working groups, consistent with the IAPH-PIANC joint agreement.
5. Maintain a close liaison with other environmental and dredging organisations such as AAPA, CEDA, WODA, USACE, IADC and others.
6. Oversee activities of the WPCI.

Work plan:

1. Monitor progress and provide reports on port environment-

related issues made at international organisations including IMO and, in particular, at the Marine Environmental Protection Committee. Provide reports and assess the impact for ports related to these issues and developments, such as eg the Ballast Water Convention, inadequacy of port reception facilities and emissions by ships.

2. Share best practices and experiences to tackle climate change and promote port clean air programmes in close co-ordination with the World Ports Climate Initiative (WPCI) with the following projects to be developed further:

- Carbon footprint inventory
- Low emission yard equipment
- Environmental ship index
- Onshore power supply (high voltage shore connection system)
- Sustainability in (terminal) lease contracts
- LNG-fuelled vessels

New ideas to be investigated for launching as projects under the WPCI.

3. Collect examples and best practices about other environmental problems, such as noise, lighting, water quality, dust and impacts on surrounding communities.
4. Increase co-operation on port environment related issues with other international organisations such as PIANC.
5. Prepare the IAPH Environmental Award.

2.3 Legal Committee

Chair: Frans van Zoelen,
Port of Rotterdam Authority, the Netherlands



Mission:

1. Initiate, follow-up, study and recommend proposed action on behalf of IAPH on issues where the collective interests of port authorities are brought into question from a legal point of view.
2. Follow and if necessary intervene in international arenas which produce legal instruments relevant for IAPH, especially the Legal Committee of IMO.
3. Assist other technical committees of IAPH with respect to relevant legal matters and to international legal instruments promoted by international organisations.

Work plan:

1. Updating and further expanding Introduction to Maritime

Law for Port Officials and the IAPH legal database.

2. Monitoring developments in the field of modernisation of Models for Port Regulation.
3. Monitoring developments of 'places of refuge', not only in IMO, but also in other organisations, in particular the EU's proposed Maritime Safety Package legislation.
4. Monitoring legal developments in international organisations such as IMO and UNCITRAL.
5. Monitoring ratification status of various relevant conventions, such as those for bunkers, HNS (hazardous and noxious substances by sea) and wreck removal.
6. Producing comments or reports to assist other technical committees and members to properly understand requirements of international legal frameworks.
7. Collect and review national or regional legal issues or legal developments relevant to port authorities.
8. Legal topics concerning port governance, liaising with the Port Finance and Economics Committee.



3 Group for Port Development, Operations & Facilitation (Group III)

3.1 Port Planning & Development Committee

Chair: Wolfgang Hurtienne,
Hamburg Port Authority, Germany

Mission:

1. Monitor, collect, analyse and disseminate information pertaining to development, planning, design, construction



and maintenance of port and harbor facilities.

Work plan:

1. Guidance to trailers' behavior at landside terminal gates
2. Optimised layout of modern multipurpose terminals:
 - i) Ro-ro / cars
 - ii) Heavy load and project cargo
3. Effects of automated container handling on port planning.

3.2 Port Operations & Logistics Committee

Vice-chairs:

Xavier Gesé Aperte, deputy director,
cargo handling and passenger services,
Puertos del Estado, Spain (left)
Masaharu Shinohara, executive officer,
Kobe-Osaka International Port Corporation, Japan (right)



Mission:

1. Monitor, collect, analyse and disseminate information and elaborate recommendations pertaining to the improvement of port services, port operations, port and terminal management considering the port as an intermodal link and crucial node of the logistics chain.

Work plan:

1. Port performance indicators (PPI) in container terminals - consideration of the best PPI to monitor (and the parameters that influence them).
2. Introductory report of ro-ro operations (ro-ro freight / conventional / with commercial vehicles / new cars freight).
3. Intermodal and logistics in ports.

3.3 Trade Facilitation & Port Community System Committee

Chair: Frédéric Dagnet,
Grand Port Maritime de Marseille, France

Mission:

1. Provide information concerning the latest developments in technology and the implications to ports for information processing and flows which are required to facilitate the movement of cargo and ships.
2. Monitor developments at international organisations which might affect trade facilitation of the ports industry



and provide information concerning positions to be taken by the Association.

Work plan:

1. Monitor and report developments of trade facilitation and port community systems (PCS) discussed and resolved in international organisations such as WCO, UN/CEFACT etc.
2. Best practices collection project.
3. 2017 edition of the IT Award.
4. Collaboration with other organisations (ESPO, IPCSA etc) on subjects of common interest (such as interoperability).



Technical committee reports and database

When a technical committee completes a project, it publishes a final report or database. IAPH members can access these outcomes for free at:
<http://www.iaphworldports.org/Library.aspx>

Five reports/database were completed and ready for release by respective technical committees as below. A project to establish a New IAPH website is now under progress spearheaded by the Communication and Community Relations Committee (CCRC) committing for completion by the end of 2015.

Reports/database published



Report on the survey results on business continuity plan (BCP) in ports, in the event of any threats, interruptions or disasters, by the Port Safety and Security Committee



Project leader: K Subramaniam, committee chair

The report shows current situation or contents of Business Continuity Plan (BCP), established in ports in the world intending to address any future threats or disasters by attaining swift recovery of port operation. The survey was made among our member ports in June 2014.



For the report, please go to: <http://goo.gl/9jyA3O>



Insurance chapter for IAPH's Introduction to Maritime Law for Port Officials, by the Legal Committee



Project leader: Frans van Zoelen, committee chair; Marcus John, TT-Club as a contributor

This insurance chapter was produced as a joint project with the TT-Club to complement IAPH's legal guidebook Introduction to Maritime Law for Port Officials.



For the text of this chapter, please go to: <http://goo.gl/BQXGpu>



Effects of the Arctic Sea Routes (NSR & NWP) Navigability on Port Industry (Part 2), by the Port Planning and Development Committee



Project leader: Masahiko Furuichi, committee vice-chair

This report was produced as an extended project of former Effects of the Arctic Sea Routes (NSR & NWP) Navigability on Port Industry (Part 1), to explore further analysis on NSR shipping focusing on cargoes of finished vehicles, iron ore and LNG.



For the text of this chapter, please go to: <http://goo.gl/9jyA3O>



Reports/database published



Best practices of a simple IT trucking system for efficient container terminal gate control for small and medium size container terminal, by the Port Planning and Development Committee



Project leader: Masahiko Furuichi, committee vice-chair

This report shows some best practices and strategies to alleviate congestion in container terminals focusing on how to eliminate improper document trailers (IDTs) from queuing at terminal gates.



For the report, please go to: <http://goo.gl/9jyA3O>



The study on best practices of container terminal automation in the world, by the Port Operation and Logistics Committee



Project leader: Juan A Delgado, the then committee chair

This report presents comprehensive perspective of technical developments of automated container terminals with detailing technical features in each stage of developments from their first-generation automated terminals in 1990s to present fourth-generation terminals.



For the report, please go to: <http://goo.gl/9jyA3O>

Reports/database in the pipeline



A new IAPH website, by Communication and Community Relations Committee



Project leader: Arley M Baker, committee chair

A project to create a new IAPH website, which is under construction, committing to launching by the end of 2015.





Update on the World Ports Climate Initiative

The World Ports Climate Initiative, in close co-ordination with the IAPH Port Environment Committee, launched its fight for reduction of greenhouse gases (GHGs) in November 2008

Five projects are already finalised or in the process of implementation and three projects remain 'in progress'. Participation in the working groups is open to all ports. For details of all the WPCI projects, go to:
<http://wpci.iaphworldports.org>

WPCI projects finalised and/or launched

➤ IAPH Air Quality & Greenhouse Gas (GHG) Toolbox

The web-based IAPH Toolbox for Clean Air Program, which provides valuable information to reduce air pollution in port areas, was expanded to include GHG mitigation measures responding to increased concerns for the effects of global climate change among port community in the world. For access to the toolbox, go to:
<http://goo.gl/tMsbcx>

➤ Carbon Footprinting (CFP) for Ports

Carbon footprinting (CFP) is used by a port to determine sources, amounts and trends of greenhouse gas (GHG) emissions for reducing emissions in the port area. In June 2010 the WPCI Carbon Footprinting (CFP) Workgroup led by Port of Los Angeles released a guidance document on carbon footprinting for ports, intended to support them in developing or improving their GHG emissions inventories. For access to the guidance document, go to:
<http://goo.gl/419em8>

Scope 1 & 2 CO² Calculator was presented at the IAPH Busan meeting in May 2011. The calculator enables ports to estimate not only their current volume of GHG emission but also possible reduction of carbon emission by using alternative energy resources. For access to the calculator, go to:
<http://goo.gl/4nngYl>



➤ Onshore Power Supply (OPS)

The Onshore Power Supply (OPS) Working Group, led by Port of Gothenburg, released a website of OPS in 2010 as a guidance tool for world's ports in planning to implement OPS for reducing emission of pollutants and GHG in their ports. The OPS website was updated in July 2013 with the addition of new sections on standardisation, such as IEC/ISO/IEEE 80005-1 High Voltage Shore Connection (HVSC) Systems, and on suppliers of OPS systems. To access the website, go to:
<http://www.onshorepowersupply.org>

➤ Environmental Ship Index (ESI)

The ESI Project Team, led by the Port of Rotterdam, established an environmental scheme to reduce ship emissions of polluted air and GHGs by using a universal environmental index to measure ship's emission performance. Participating ports



IAPH • PORT ENVIRONMENT COMMITTEE


WPCI

become incentive-providers for ships with good ESI scores. ESI started its programme in January 2011 after setting up its website in November 2010. By July 2015 the programme had more than 3,100 registered ships with valid ESI scores, and 36 ports and organisations providing incentives.

To access the website, go to:

<http://esi.wpci.nl>



Intermodal Transport

Intermodal transport – using multimodal transportation – is regarded as the most efficient way to carry cargoes, while reducing transport costs and air emissions (including GHGs). The project team, led by the Port of Amsterdam, examined a ports strategy to improve intermodal transport or develop modal shift. A final report, Port Intermodal Strategy, was released in April 2013. For access to the final report, go to:

<http://goo.gl/9YurO0>

WPCI projects in progress



Cargo handling equipment

To reduce emissions of pollutants and GHGs from cargo-handling equipment in port areas, the project team collects best practice in advanced ports that have introduced low-emission and high-efficiency equipment for cargo handling.

For access to a presentation on Hybrid Yard Hostler, Port of NY/NJ, go to:

<http://goo.gl/P3Kr1H>



Lease agreement template

A lease agreement template includes a sustainable approach to lease contracts for ports' tenants, with requirements related to measures to reduce air pollution and GHGs from tenants' facilities. The project team will prepare model templates of lease contracts for port tenants.



LNG-fuelled vessels

The LNG-fuelled vessels project was added to the WPCI remit in May 2011, in anticipation of expected use of liquefied natural gas (LNG) as ship fuel, due to its low emission of polluting gases, particulate matter and GHG. The project team, led by the Port of Antwerp, is tasked with preparing guidelines on safety procedures and facilities development for LNG bunkering to ships in ports. LNG bunkering checklists and an LNG bunker supplier accreditation model are already being developed as a guide for ports.

A website on LNG as ship fuel was launched in the summer of 2014.

<http://www.lnqbunkering.org>



IAPH Women's Forum

Hamburg provided an opportunity for the IAPH Women's Forum to discuss and report back on a number of activities during a busy year

Chair: Naomi Kogon-Steinberg, IAPH honorary member

IAPH Women's Forum was established at the IAPH board meeting of 22 May 2012 to aspire to advance and empower women in the maritime industry, to create a platform for discussing women's issues in the maritime industry, to look at ways to encourage women to join the industry, and to promote training programmes enabling women to better compete for positions at all levels, including those previously not open to women.

In addition to annual meetings, members of the forum actively exchange information on women in the maritime industry on the following SNS:



<https://www.facebook.com/groups/126585944210142>



<http://goo.gl/bgaVYQ>



Chair: Naomi Kogon-Steinberg,
IAPH honorary member

Issues discussed at Hamburg meeting:

The IAPH Women's Forum has been very active this year with a number of initiatives under way. At the IAPH World Ports Conference in Hamburg, members met to discuss and report activities and progress since the Mid-term Ports Conference in Sydney (April 2014) in the following five areas:



1. The Women's Forum Scholarship (Dr Geraldine Knatz from the USA, immediate past president of IAPH)



- 2: The mentoring initiative (Melissa Kappely, Port Nelson, New Zealand, and Rachel Vandenberg Dewberry from the USA)



- 3: The exchange programme between ports (Siti Noraishah Binti Azizan, Sabah Ports, Malaysia)



- 4: Website and social media (Justine Camoin, MGI, France)



- 5: Report from the last Africa/Europe regional meeting (Muthoni Gatere, Kenya Ports Authority).





Staying in touch

IAPH keeps up to date with its membership and the wider shipping community in a variety of ways, including *Ports & Harbors* magazine, Facebook, and press releases and its website

Promoting IAPH

Ports and Harbors Magazine

IAPH publishes an official journal, *Ports & Harbors*. It is issued six times a year, with editorial input from IHS. *Ports & Harbors* is a medium not only for IAPH members, but also for port professionals to exchange views and opinions, obtain useful information and share best practice concerning the wide-ranging issues faced by ports and the maritime industry. Comments on the magazine or submission of articles (or material or stories) are always welcomed at ph@iaphworldports.org

IAPH website

It is more than four years since the IAPH website was revamped, in March 2011. The IAPH Committee on Communication and Community Relations, chaired by Arley Baker, Port of Los Angeles, USA, has been discussing ways of revamping the site by making it as a strong marketing tool for IAPH as the global voice for ports. The new IAPH website is expected to be launched towards the end of 2015.

Press releases

To make its position clear on issues of interest and concern to the membership, IAPH issues press releases on a regular basis, especially around the time of its conferences. To read all press releases, go to: <http://www.iaphworldports.org/IAPHPressReleases.aspx>

IAPH on Facebook

Since June 2011 the number of users and followers is increasing as this social networking tool offers a link to the general public and a channel for dialogue. As of 13 August 2015, IAPH FB has some 980 'likes', a number that has nearly doubled between 2014 and 2015. To expand our audience, please like the IAPH FB page and follow it.
<http://www.facebook.com/iaphworldports?sk=wall>

IAPH online newsletter

The IAPH Online Newsletter has been sent to about 1,500 subscribers on a bi-weekly basis since 2002 and contains up-to-date association news, such as IAPH meetings, technical committee activities, member ports' news, and other relevant information. Both members and non-members can receive the IAPH Online Newsletter. Please contact: newsletter@iaphworldports.org

IAPH Membership Directory

The *IAPH Membership Directory* is revised once a year with support from IAPH co-ordinators. It provides easy-to-access information on our members, such as contact addresses and port cargo statistics, that is useful when networking among IAPH members





Accounts

Statements of Accounts for 2014

The financial net worth of the association reached ¥450million as of the end of 2014, having increased by about ¥26million compared with the previous year. This is partly because the annual revenue from the membership dues increased (by ¥8.9million) compared with the budget but the annual expenses including office expenses were slightly (by ¥1.5million) under the budget. But the greatest reason behind the results is that the investment securities held by the association increased their values in terms of Japanese yen due to depreciation of Japanese yen at the end of the year.

Statements of Revenues and Expenses 1 January to 31 December 2014 (General accounts)			(Unit: Yen)
Items	Budget	Actual	Difference
1 Membership Dues	110,800,000	119,727,996	8,927,996
Regular Members	99,700,000	108,571,182	8,871,182
Associate Members	11,100,000	11,156,814	56,814
2 Interest Received	3,600,000	4,078,513	478,513
3 Other Income	3,000,000	2,679,897	-320,103
Revenues in this Term	117,400,000	126,486,406	9,086,406
1 Personnel Expenses	49,800,000	47,490,768	2,309,232
2 Non-Personnel Expenses	63,500,000	64,412,281	-912,281
Office Expenses	11,500,000	12,419,694	-919,694
Correspondence and Communications	1,500,000	1,248,764	251,236
Publications	20,710,000	19,732,655	977,345
Information Services	800,000	770,400	29,600
Overseas Travel Expenses	4,000,000	4,406,075	-406,075
Social Expenses	140,000	118,100	21,900
Conference Expenses	1,200,000	17,896	1,182,104
Professional Services	2,050,000	2,016,525	33,475
Miscellaneous	1,000,000	880,283	119,717
IAPH Liaison Work	11,600,000	13,879,127	-2,279,127
Technical Committee Support	9,000,000	8,922,762	77,238
3 Other Expenses	3,300,000	3,190,733	109,267
Expenses in this Term	116,600,000	115,093,782	1,506,218
Ordinary Surplus for the Period	800,000	11,392,624	10,592,624
Loss on Foreign Currency Exchange	0	248,852	-248,852
Extraordinary Surplus for the Period	0	-248,852	-248,852
Surplus for the Period	800,000	11,143,772	10,343,772



Statements of Revenues and Expenses 1 January to 31 December 2014 (Overall accounts)				(Unit: Yen)
Items	General Accounts	IAPH Training Scholarship Fund	Akiyama Prize Fund	Overall Accounts
1 Membership Dues	119,727,996	0	0	119,727,996
2 Interest Received	4,078,513	0	7,183	4,085,696
3 Other Income	2,679,897	0	0	2,679,897
Revenues in this Term	126,486,406	0	7,183	126,493,589
1 Personnel Expenses	47,490,768	0	0	47,490,768
2 Non-Personnel Expenses	64,412,281	0	0	64,412,281
3 Other Expenses	3,190,733	0	0	3,190,733
Expenses in this Term	115,093,782	0	0	115,093,782
Ordinary Surplus	11,392,624	0	7,183	11,399,807
Extraordinary Surplus	-248,852	0	0	-248,852
Surplus for the Period	11,143,772	0	7,183	11,150,955

Balance sheets as of 31 December 2013 and 2014				(Unit: Yen)
Items	2014	2013	Difference	
1. Assets				
Current Assets	129,549,257	118,544,245	11,005,012	
Cash and Deposits	127,913,417	116,922,559	10,990,858	
Petty Cash	43,248	21,360	21,888	
Ordinary Deposits	52,958,369	20,485,199	32,473,170	
Fixed Deposits	74,911,800	96,416,000	-21,504,200	
Accrued Revenues	868,305	894,054	-25,749	
Other Current Assets	767,535	727,632	39,903	
Fixed Assets	343,057,871	345,699,096	-2,641,225	
Specified Fixed Assets	28,851,273	46,563,841	-17,712,568	
Retirement Benefits Fund	21,347,179	39,066,930	-17,719,751	
IAPH Training Scholarship Fund	1,581,505	1,581,505	0	
Akiyama Prize Fund	5,922,589	5,915,406	7,183	
Other Fixed Assets	314,206,598	299,135,255	15,071,343	
Fixture and Equipment	18,866	23,652	-4,786	
Investment Securities	310,445,749	295,369,620	15,076,129	
Leasehold Deposits	3,741,983	3,741,983	-	
Total Assets	472,607,128	464,243,341	8,363,787	
2. Liabilities				
Current Liabilities	1,723,900	2,004,589	-280,689	
Accounts Payable	807,917	875,724	-67,807	
Deposits Received	697,419	768,372	-70,953	
Reserve for Wages and Allowances	218,564	360,493	-141,929	
Fixed Liabilities	21,347,179	39,066,930	-17,719,751	
Reserve for Retirement Benefits Fund	21,347,179	39,066,930	-17,719,751	
Total Liabilities	23,071,079	41,071,519	-18,000,440	
3. Net Worth				
Restricted Net Worth	5,922,589	5,915,406	7,183	
Endowments	5,922,589	5,915,406	7,183	
Other Net Worth	443,613,460	417,256,416	26,357,044	
Total Net Worth	449,536,049	423,171,822	26,364,227	
Total Liabilities and Net Worth	472,607,128	464,243,341	8,363,787	



Budget for 2015/16

The total revenues and expenses for 2015 are estimated at ¥135.3million and ¥132.6million respectively with a marginal surplus of ¥2.7million. Those for 2016 are ¥135.1million and ¥129.8million with a surplus of ¥5.3million.

IAPH Budget for 2015 & 2016 (General accounts)		(Unit: Yen)
Items	2015 Budget	2016 Budget
Revenues		
Membership Dues	129,000,000	129,000,000
Regular Members	116,500,000	116,500,000
Associate Members	12,500,000	12,500,000
Interest Received	3,600,000	3,400,000
Other Incomes	2,700,000	2,700,000
Advertisement/Directory	2,000,000	2,000,000
Sales of Publication	700,000	700,000
Revenues in this Term	135,300,000	135,100,000
Expenses		
Personnel Expenses	45,700,000	46,000,000
Non-Personnel Expenses	81,600,000	77,750,000
Office Expenses	12,750,000	12,750,000
Correspondence and Communications	1,800,000	1,500,000
Publication	21,800,000	22,300,000
Information Services	800,000	800,000
Overseas Travel Expenses	5,000,000	5,000,000
Social Expenses	200,000	150,000
Conference Expenses	3,000,000	2,000,000
Professional Services	2,050,000	2,050,000
Miscellaneous	1,000,000	1,000,000
IAPH Liaison Work	13,200,000	13,200,000
Technical Committee Support	15,000,000	15,000,000
Constitution Amendment	5,000,000	2,000,000
Other Expenses	5,280,000	6,050,000
Expenses in this Term	132,580,000	129,800,000
Surplus for the Period	2,720,000	5,300,000



Chair of the Finance Committee

Dear Sir

It is my privilege as Chair of the Executive Finance Committee to recommend the 2014 Financial Statements and Balance Sheet to the Executive for adoption and convey some general overview comments on the results achieved last year. Before doing so, it is appropriate to record that the Secretariat is again to be congratulated for their efforts and support in carefully managing the Association's financial affairs. The tight economic situation has necessitated a continuing focus on controlling or reducing costs, and working within budgetary levels as the norm.

I will direct my comments to two key aspects of the accounts which from my perspective again warrant particular reference. First, the nature of the Association's revenue generation from Membership Dues worldwide and continuing fluctuations with exchange rates and the yen cross rate and the fixed linkage mechanism to the Special Drawing Rights (SDR's)*, means there will always be both upwards and downwards pressure on the revenue aspects of the Association's affairs in the current format. Our exposure to currency fluctuations, both positive and negative, will be ongoing. It may be wise for the Executive to consider the establishment of a currency fluctuation reserve account at this time. The depreciation in the yen during the year resulted in membership revenues of around 119.7 million yen, being 8% or 8.9 million yen higher when compared with the budgeted 110.8 million yen. This is despite the slight decline in actual membership dues through the SDR, of negative 1.5%.

The second issue is the improvement of 26.4 million yen in the overall financial net worth of the Association and to note that without the depreciation of the Japanese yen both from the operating surplus and the appreciation of our balance sheet investment securities, the actual operating performance would have been roughly similar to last year. Given the Association's net worth has now improved to around 450 million yen, compared with 310 million yen ten years ago, and despite the way the SDRs are calculated, making specific provision for future currency fluctuations, particularly negative, would seem to be a prudent risk mitigation strategy.



This year, the Association has been very fortunate that the depreciation of the yen has worked in favour of the IAPH's financial position.

The Secretary General's detailed comments in the advisory notes are an accurate reflection of the individual areas in the accounts and highlight the extensive endeavours of the Secretariat in a number of key areas to achieve the budget. The overall positive operating result of 11.4 million yen for the year was extremely pleasing, despite the challenging financial environment.

A clear audit report has also been received and the Secretary General is to be commended for his overall efforts and diligence in the financial prudence of the Association's affairs..

Yours faithfully,

Garth Cowie

Chairman of the Finance Committee

**SDR stands for "Special Drawing Rights" of "IMF", a money basket, is convertible into four major currencies: US dollars, UK pounds, euro, and the Japanese yen.*



Membership **update**

As of 30 June 2015, the association comprises 310 members from more than 90 countries/economies. The regional breakdown for each membership is as listed below.

176 regular / temporary members

91 Asia/Oceania region

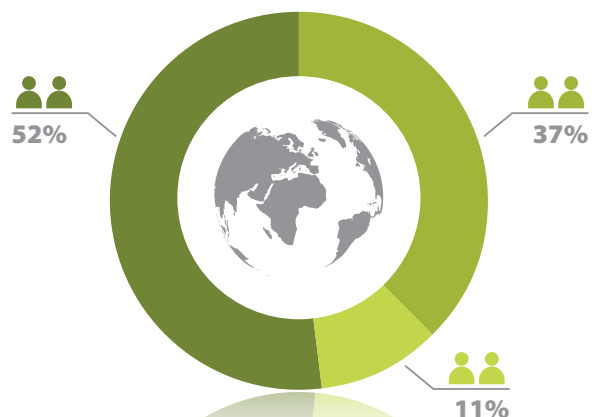
- 79 Asia region
- 12 Oceania region

66 Africa/Europe region

- 24 Africa region
- 42 Europe region

19 Americas region

- 12 North America region
- 7 South America region



134 associate members

61 Asia/Oceania region

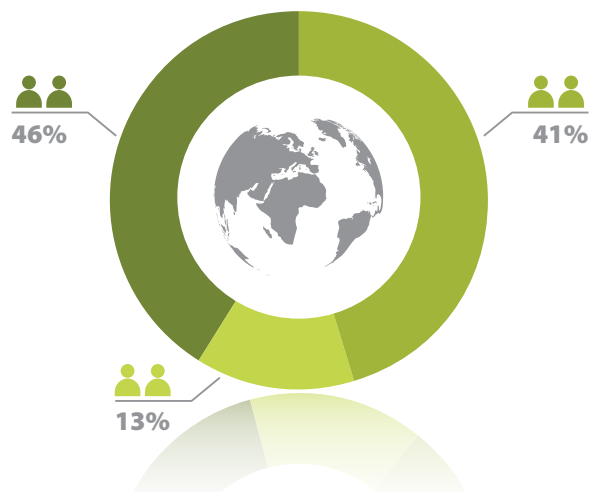
- 58 Asia region
- 3 Oceania region

55 Africa/Europe region

- 6 Africa region
- 49 Europe region

18 Americas region

- 13 North America region
- 5 South America region





Regular/temporary members (2014-2015)

From 1 July 2014 to 30 June 2015, five new members joined and 11 members left. The regular/temporary members who joined or left during the period are listed below:

New members

- GIE HAROPA (Harbours of Le Havre, Rouen and Paris) (France)
- Port of Palm Beach (USA)
- Kobe-Osaka International Port Corporation (Japan)
- Joint Stock Company 'NC' Aktau International Sea Commercial Port (Kazakhstan)
- Sakai Port Authority (Japan)

Withdrawals

- Grand Port Maritime du Havre (France)
- Ports de Paris (France)
- VO Chidambaranar Port Trust (India)
- Kobe Port Terminal Corporation (Japan)
- Osaka Port Corporation (Japan)
- Shanghai International Port (Group) Co Ltd (China)**
- Xiamen Port Authority (China)**
- Empresa Nacional de Puertos SA-ENAPU SA (Peru)**
- Port of Aarhus (Denmark)
- Autoridad Portuaria de Santander (Spain)
- Commercial Port of Vladivostok (Russia)

** Terminated due to dues delinquency

Associate members (2014-2015)

From 1 July 2014 to 30 June 2015, six new members joined and 14 members left. The associate members who joined or left during the period are listed below:

New members

- INPLAN GmbH (Germany)
- Dewberry (USA)
- Mr Fokoua Tewa Joseph Eric (Japan)
- Regs4ships (UK)
- Hyland Software (USA)
- Maritime Technology Associates LLC (USA)

Withdrawals

- Carmanah Technologies Corporation (Canada)
- Prof Takehisa Nakagawa (Graduate School of Law, Kobe University) (Japan)
- Pharos Marine Automatic Power Incorporated (USA)
- dbh Logistics IT AG (Germany)
- Mr Zia H Rizvi, P Eng (Consulting Engineer (Port and Harbor) (Canada)
- The Yokohama Rubber Co (Japan)
- Mr Tomofumi Miyatsu (Consulate-General of Japan at Busan) (Korea)
- Massachusetts Institute of Technology, MIT Libraries (USA)
- Arab Sea Ports Federation (Egypt)**
- Gwangyang City (Korea)**
- Maritime International Inc (USA)**
- Danish Ports (Denmark)
- The International Council on Clean Transportation (USA)
- The Japan Academic Society for Port Affairs (Japan)

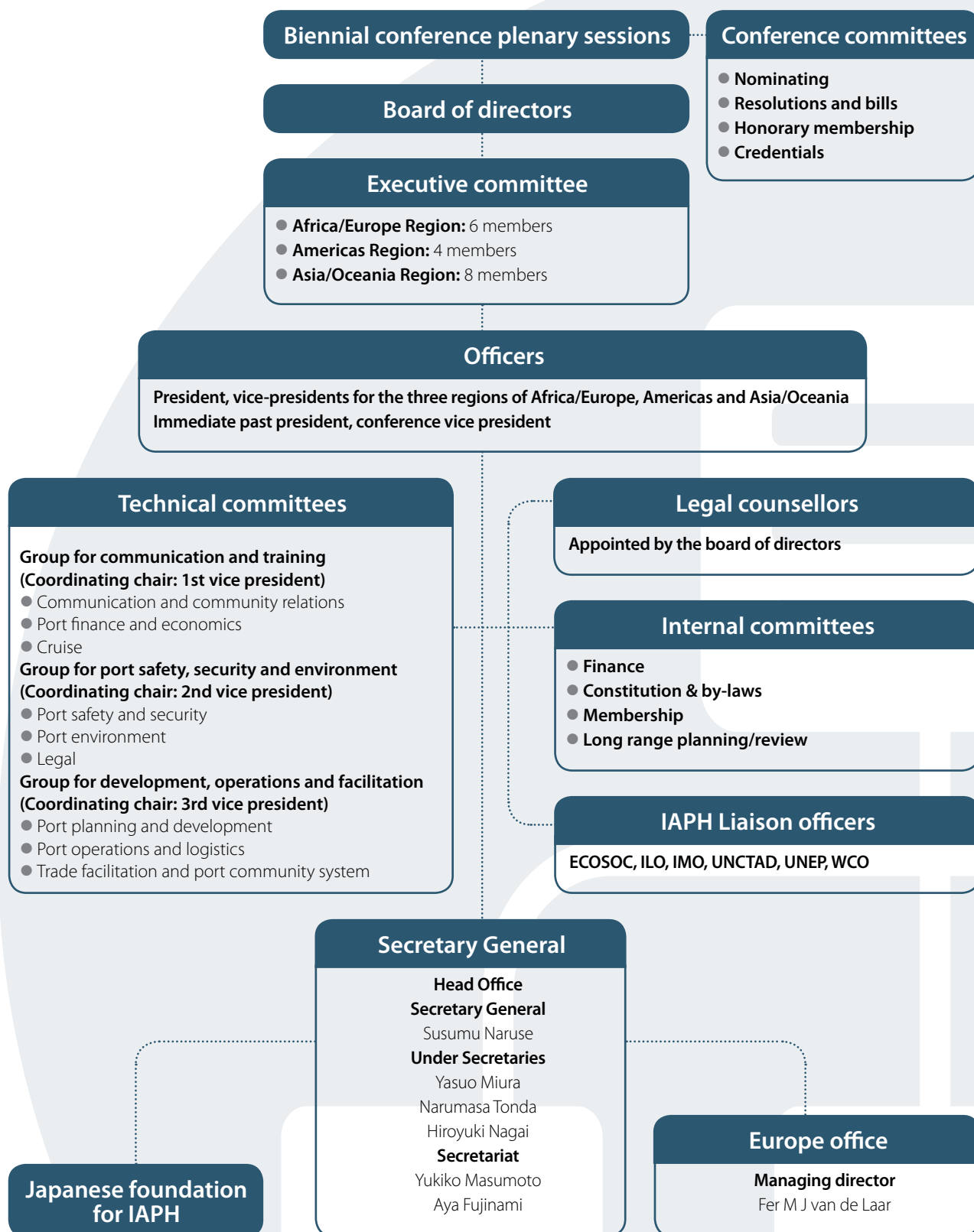
** Terminated due to dues delinquency

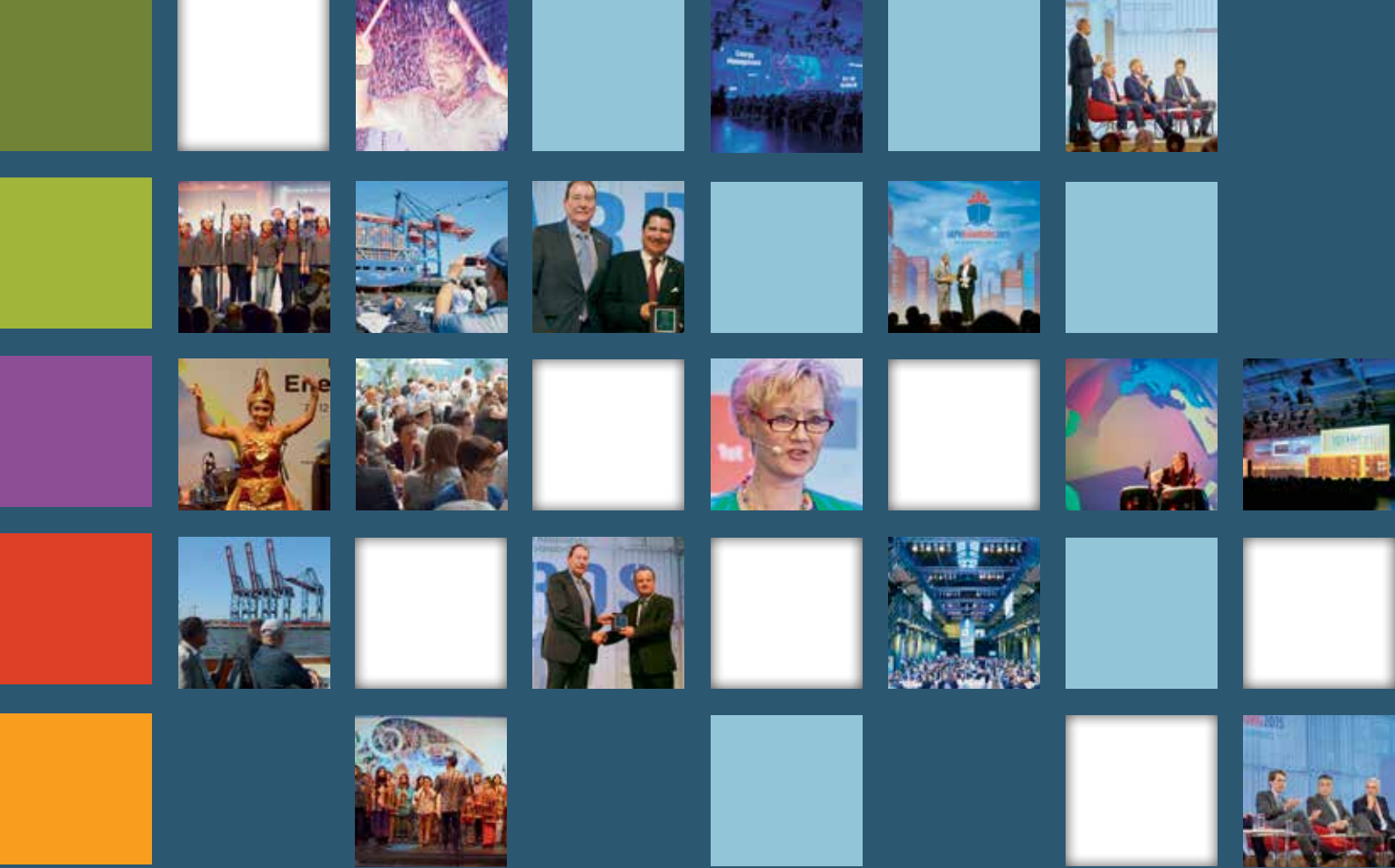


Executive committee members

Officers for 2015/2017

President			Executive Committee members		
 <p>Santiago Garcia Milà Deputy Managing Director Autoritat Portuària de Barcelona, Spain</p>			<p>Americas Region (Four members)</p> <p>Ashley Taylor President Point Lisas Industrial Port Development Corp., Ltd., Trinidad and Tobago</p> <p>Curtis J. Foltz Executive Director Georgia Ports Authority, U.S.A.</p> <p>Alberto Díaz President National Port Administration, Uruguay</p> <p>-vacant-</p>	<p>Asia/Oceania Region (Eight members)</p> <p>Jun-Kwon Park Director General of Ports and Harbours Bureau Ministry of Oceans and Fisheries, Korea</p> <p>Atsushi Fujii Professional Engineer, Comprehensive Technical Management/ Civil Engineering National Institute for Land Infrastructure Management, Ministry of Land, Infrastructure, Transport and Tourism, Japan</p> <p>Martin Byrne CEO Port Nelson Ltd., New Zealand</p> <p>LE Cong Minh Director General Saigon Port Company Ltd, Vietnam</p> <p>Abdul Wahab Al Diwani Director, UAE Marine Inspection and Survey Dept. National Transport Authority, Abu Dhabi, U.A.E.</p> <p>David Padman General Manager Port Klang Authority, Malaysia</p> <p>Tai-Hsin Lee President Taiwan International Ports Corp. Ltd., China</p> <p>-vacant-</p>	<p>Africa/Europe Region (Six members)</p> <p>Richard Anamoo Director General Ghana Ports and Harbours Authority, Ghana</p> <p>Dov Frohlinger COO Israel Ports Development and Assets Co., Ltd., Israel</p> <p>Bisey Uirab CEO Namibian Ports Authority (NAMPORT), Namibia</p> <p>Leonids Loginovs CEO Freeport of Riga Authority, Latvia</p> <p>Eddy Bruyninckx CEO Antwerp Port Authority, Belgium</p> <p>Javier Gesé Aperte Deputy Director, cargo handling and passenger services, Puertos del Estado, Spain</p>
Vice Presidents					
 <p>1st Vice President for Americas Region</p> <p>Geir-Eilif Kalhagen CEO Port of Longview, U.S.A.</p>	 <p>2nd Vice President for Asia/Oceania Region</p> <p>Richard Joost LINO President Director Indonesia Port Corporation II, Indonesia</p>	 <p>3rd Vice President for Africa/Europe Region</p> <p>Hien Sié Managing Director, Abidjan Port Authority, Côte d'Ivoire</p>			
Immediate Past President					
 <p>Grant Gilfillan CEO and Director Port Authority of New South Wales, Australia</p>					
Conference Vice President					
 <p>Shanti Puruhita Senior Manager of Planning & Welfare of Human Resources Indonesia Port Corporation II, Indonesia</p>					
Secretary General					
 <p>Susumu Naruse, Secretary General, IAPH</p>					





Head Office: 7th fl. South Tower, New Pier Takeshiba, 1-16-1 Kaigan, Minato-ku, Tokyo 105-0022, Japan



Tel: +81-3-5403-2770 / **Fax:** +81-3-5403-7651



Web: www.iaphworldports.org



Email: info@iaphworldports.org



Europe Office: Spreeuwendaal 6, 2914 KK, Nieuwerkerk IJssel, Netherlands



Tel: +31-180-32-33-99 / **Fax:** +31-180-31-85-69



Email: info@iaph.nl