

IAPH

Annual report 2013-2014



IAPH

International Association
of Ports and Harbors





About IAPH

The International Association of Ports and Harbors (IAPH) was founded in November 1955. Today, as the global alliance of the world port community, it represents some 180 ports and 140 port-related organisations of about 90 countries worldwide. The member ports together handle over 60% of the world's sea-borne trade cargo and nearly 80% of global container traffic.

IAPH meets every two years in odd-numbered years at its World Ports Conference, the largest gathering of the world port community. Port executives and experts coming from all parts of the world exchange views and experiences over a range of issues and challenges. Between IAPH World Ports Conferences, the Mid-Term Ports Conference/Board Meeting is held in even-numbered years to discuss common issues as well as internal matters of the Association. In addition, members of IAPH's three regions – Africa/Europe, Americas, and Asia/Oceania – meet regularly at Regional Meetings to discuss common issues in a regional context.

IAPH actively addresses critical issues facing the port industry through its technical committees. Currently, there are nine technical committees, respectively tasked to study implications and recommend policies and measures in such areas as port

communication, finance, safety, security, environment, legal, development, operations, IT application, and cruise. IAPH also proactively plays a significant role in tackling global issues at maritime-related UN agencies and other international organisations. For this, IAPH is especially granted non-governmental organisation consultative status by ECOSOC, ILO, IMO, UNCTAD, UNEP, and WCO.

IAPH will continue to play a pivotal role as a unique global forum of the port industry in strengthening co-operation and sharing experiences among the world's ports. Moreover, to effectively deal with many global issues, IAPH will also actively collaborate with other international organisations for the sustainable development of the world economy.

Furthermore, since the Los Angeles Conference in May 2013, an extensive and in-depth discussion has taken place at the initiative of President Grant Gilfillan to review the current governing structure and decision-making process towards making IAPH more relevant and creating a stronger leadership. In Sydney, Australia, April 2014, the Board of Directors adopted a resolution on Creation of a Council to replace the Board of Directors and the Executive Committee (see page 12).

Vision:

The Global Ports' Forum for Industry Collaboration and Excellence

Mission:

Promoting the interest of ports worldwide through strong member relationships, collaboration and information-sharing that help resolve common issues, advance sustainable practices, and continually improve how ports serve the maritime industries

Objectives to achieve the mission:

- Strengthen relationships among the member ports by facilitating interaction, dialogue, problem-solving, and formulation of best practices
- Leverage member expertise through strong technical committees and programmes that create platforms focused on resolving complex port and maritime industry concerns and building greater efficiency and sustainability for ports worldwide
- Promote and demonstrate IAPH members' leadership and commitment to a cleaner, safer, and more environmentally sustainable industry for the benefit of the global community
- Proactively co-ordinate with other international maritime and related organisations (such as the IMO, PIANC, UNCTAD, WCO, etc) and advocate for global solutions to issues that impact IAPH members





Contents

	President's message	4
	Secretary General's message	6
	Sydney Mid-term Conference	8
	Resolutions	12
	Africa/Europe regional meeting	14
	Technical Committees	16
	World Ports Climate Initiative	22
	Women's forum	24
	Promoting IAPH	26
	Accounts	28
	Membership	30
	Executive committee members	32
	Structure	34



Leveraging your membership

Your President, Grant Gilfillan, is proud of members' collective strength and willingness to embrace change

More than a year into the privilege of IAPH Presidency, I am profoundly grateful for the strong support and confidence I am receiving from the membership and the Secretariat as we work collectively on an important agenda for change.

From the outset of my IAPH journey, I strongly believed that this great organisation, with its long history and impressive global membership, had emerged from the global financial crisis facing a new challenge – to refocus on the core needs of the membership and to leverage the strength of that membership to increase the volume of our voice in global advocacy. Our recent mid-term conference and board meeting in Sydney clearly demonstrated we are on the same page with so many of you committing to travel Down Under and be a part of the debate on future direction.

That debate has since resolved into a clear path of action and I believe that with on-going support and input from you all, we will have enough on the table at the World Conference in Hamburg next year to take some critical next steps in the evolution of our organisation.

In an economic climate of belt tightening and stronger domestic focus, the IAPH recognises the need to reach out to its membership more effectively to identify common issues and drive lateral communications to encourage a stronger sense of community.

We are none of us alone when we belong to such a strong, energetic, and collaborative organisation as the IAPH and I encourage all of you to leverage the full value of your



membership by actively engaging in our communications, technical committees, and stakeholder events. And on the subject of stakeholder events, I strongly suggest you clear your diaries for the World Conference next June – Hamburg Port Authority will be fabulous hosts in a beautiful city with a programme that will resonate with all our challenges and issues in global trade.

Yours truly,

A handwritten signature in black ink, reading "Grant Gilfillan".

Grant Gilfillan

IAPH President

Port Authority of New South Wales Chief Executive Officer





Looking back at 2013/2014

"The past informs the future" — Secretary General Susumu Naruse looks forward to the formation of a new decision-making Council to carry the Association forward

Mid-term Ports Conference in Sydney

With more than 200 participants from around the world, the IAPH Mid-term Ports Conference and Board Meeting 2014 in Sydney was a great success. The conference covered various 'hot' issues such as "Expansion of the Panama Canal", which confirmed the project would be completed by the end of 2015, and "Raising the *Costa Concordia*", which involved state-of-the-art techniques, careful planning, use of high-tech machinery, and environmental mitigation. Other stimulating topics included: port automation, empowerment of women in the port industry, enlargement of ship size, overweight containers, and some environmental issues.

As you see in the adopted resolution (see page 12), the Board Meeting has officially decided to reform IAPH's decision-making processes and to create a small group to examine the options. The major points are:

- It supports the establishment of a Council by merging the Board of Directors and the Executive Committee and authorises it to function as a new leadership, supervisory, executive, and policy-making body of the Association;
- It authorises the President to establish a small group of members to prepare and develop a new draft Constitution and By-laws of the Association to define its new organisational and governing structures as a result of establishing the Council;
- The group explores an alternative Officer's election process, which provides for greater continuity of Officers. Such election process will specifically seek to move away from the current time-based seniority system and replace it with a more open-ended merit system.
- It reaffirms that a draft Constitution and By-laws will be submitted for adoption to the Plenary Session of the IAPH World Ports Conference, Hamburg, Germany, in June 2015.

The group will have its first meeting in Barcelona in September 2014, but may meet on other occasions to reach a consensus on the amendments of the IAPH By-laws, which should be presented to the membership for approval in Hamburg next year.

Regional Meeting

After the 28th World Ports conference in Los Angeles (LA), an IAPH Regional Meeting for the Africa/Europe region took place in Amsterdam in November 2013.

Alongside that event, a special meeting (Strategy Meeting) of the Long Range Planning and Review Committee, one of the IAPH Internal Committees, convened in Amsterdam in order to review the current organisational structure and decision-making processes and discuss the future directions of the Association.

Technical Committees, WPCI and IAPH Women's Forum

Following the LA conference, the following new reports have been made available on the website:

- Introduction to Maritime Law for Port Officials
- Updated Version of IAPH Legal Data Base
- Effects of Northern Sea Route and Northwest Passage
- Offshore Wind-farms and Ports

All nine technical committees met during the Sydney Mid-term Ports Conference in order to discuss the interim results of their work. The details of the discussions made in Sydney can be found on page 16-19 and on the IAPH website. The final outcomes of committee work during the term 2013/2015 will be reported at technical committee meetings in Hamburg.

A WPCI project team – LNG-fuelled vessels and ports – chaired by Tessa Major, Port of Antwerp, has made a good progress and more ships and incentive providers have joined ESI (see pages 22-23).

Under its new chairperson, Diane Edwards, the IAPH Women's Forum organised its first meeting: a dedicated Women's Forum session within the Working Session, in Sydney.

Preparation for IAPH Awards at the Hamburg Conference

IAPH has five conference awards – namely, the "Akiyama Award", the "Conference Open Award", the "IT Award", the "Communication Award" and the "Environment Award" – the final decisions and Award announcements will be revealed at the annual conference.

The final discussions about the framework and evaluation procedure of the coming award contests were made at respective technical committees in Sydney and an official announcement to call for entries has already been issued (see page 10).

Membership

As of 30 June 2014, the Association comprises 325 members in 89 countries/economies. Since 1 July 2013, the following nine regular members and two temporary members have joined the Association (see pages 30-31).



Regular Members

- Marine and Water Bureau, Government of Macau (China)
- Philippine Ports Authority (PPA) (Philippines)
- Port of Beirut (Lebanon)
- Hakata Port Terminal Co Ltd (Japan)
- Puerto de Santa Marta (Colombia)
- Port of Longview (US)
- Eastland Port Ltd (New Zealand)
- Sierra Leone Ports Authority (Sierra Leone)
- Port of Tanjung Pelepas (Malaysia)

Temporary Members

- Port of San Francisco (US)
- Ports North (Australia)

Future confirmed conferences and meetings

15 September 2014

IAPH Strategy Meeting in Barcelona, Spain (dates to be confirmed)

17 November 2014

IAPH Africa/Europe Regional Meeting in Leisure Lodge Beach, Mombasa, Kenya, along with PAPC (Pan African Ports Cooperation) Conference

1-5 June 2015

The 29th IAPH World Ports Conference in Hamburg, Germany

May 2017

The 30th IAPH World Ports Conference in Nusa Dua, Indonesia (dates to be confirmed)

Exco Members

During the period, two gentlemen have newly joined the IAPH Executive Committee (Exco):

- Jun-Kwon Park, Director General of Ports and Harbours Bureau, Ministry of Oceans and Fisheries, Korea
- Richard Anamoo, Director General, Ghana Ports and Harbours Authority, Ghana

Statements of Accounts for 2013

The financial net worth of the association has reached ¥423 million, having increased by about ¥41 million compared with the previous year as at the end of 2013. This is because, although the revenue from the membership dues decreased (by ¥5.6 million) compared with the budget, expenses were also cut to a certain degree during the period (by ¥5.4million), and the investment securities in foreign currencies held by the association increased the value in terms of Japanese Yen (by ¥31million) due to depreciation of the Yen as at the end of the year. The details are elaborated later in this report along with the comments made by the Chair of IAPH Financial Committee, Garth Cowie, Port of Napier Limited.

Future Conferences and Meetings

The first strategy meeting after the Board Meeting in Sydney is to be held in September, which may be followed by supplementary meetings to draft the amendments of the IAPH By-laws.





Sydney Mid-term Conference



Mid-term ports conference in Sydney

Sydney Conference sets a new record for attendees

Hosted by CEO & director Mr Grant Gilfillan, on behalf of Sydney Ports Corporation, the IAPH Mid-term Ports Conference and Board Meeting was successfully held in Sydney, Australia, 6-10 April, attracting a record attendance of over 200 delegates from 35 nations.



Keynote speakers

The conference was officially opened on 8 April by the Honorable Warren Truss, deputy Prime Minister of Australia and minister for Infrastructure, who delivered a keynote address stressing that, since 1788 when the first fleet of settlers arrived from Europe, Sydney has remained an important gateway to international trade for Australia and, as the biggest island nation in the world, the country has strongly pursued efficient waterfront operations to deal with ever-increasing export and import volumes.

A keynote address was delivered by Luis Ferreira, communications specialist and engineer for the Panama Canal Authority's \$6 billion canal expansion programme, on the engineering challenges faced. He visually explained how a deeper, wider Panama Canal with its two new flights of triple locks will double existing canal capacity and when the upgraded passageway opens for business early next year, it will allow transit for vessels with three times more cargo than previously.

Session 1 – Port Automation

Three speakers – a port consultant, a terminal operator and a cargo handling equipment maker – presented their views on port automation, and were in agreement that port automation, if planned properly and carefully, can bring about greater efficiencies, lower overall costs and improved safety for terminal operations.

Session 2 – Port Planning and Investment

Asciano, Australia's largest rail freight and port terminal operator, offered its vision of a national intermodal transport service and its strategic importance to the country. A second presentation was on how the Trapac Automated Container Terminal at the Port of Los Angeles was planned and designed; it concluded that automation is a paradigm shift in container terminal design. The last speaker focused on how ship-size developments and liner alliances are having a global impact on port planning and productivity.

Session 3 – Port Operations – Women Driving Success

Tony Gibson, CEO of New Zealand's Ports of Auckland, offered a case study of his port where a level playing field for both men and women was ultimately created by overcoming physical barriers for women to join the port workforce. Then, a female sea

captain took to the podium to talk about the contributions that women have made to the industry, using her observations and own experience at sea.

Session 4 – Raising the *Costa Concordia* – the Salvage Challenge

Todd Busch of US company Crowley Maritime Corporation, gave a highly visual presentation telling the incredible story of the successful salvage operation to raise the *Costa Concordia*.

Session 5 – Big, Bigger, Biggest

Roger Johnson, Port Hedland Port Authority, Australia, made a presentation on the logistics and strategic challenges of managing the world's biggest bulk minerals export port where tonnage records are broken almost every month.

Then Maersk Australia's representative introduced us to the Triple E – currently the largest container ship in the world built by Maersk – which is setting new standards in the container industry, not just for size but also for efficiency and environmental performance.

As a port which received the Triple E in July 2013, EH Lee of Korea's Busan Port Authority, provided a port manager's perspective of planning and preparing to receive the world's biggest box ship.

Session 6 – Port – Infrastructure & Interfaces

Lutz Birke, of Hamburg Port Authority in Germany, presented on Hamburg's efforts to become a smart port focused on energy (fewer emissions), logistics (more goods), maintenance of infrastructure and cruise through effective use of IT applications. Shane Hobday, from NSW Ports, Australia, presented on overweight or misdeclared weights of containers; these pose a safety and operational risk for the entire logistics chain, so he focused on how actively IAPH has addressed the issue and its recent lobbying of the IMO (International Maritime Organization).

This was followed by Steve Gunn of Sydney Ports Corporation, who made a presentation on mandatory weighing of inbound containers, focusing on the Weigh-In-Motion Scale (WIMS) installed at Port Botany and how these actually work.

Session 7 – Other Challenges for Ports

Hervé Lours of Schneider Electric, in France, provided a world distribution map of onshore power supply (OPS), focusing on the environmental and financial benefits the OPS system has brought to the port community.



Sydney Mid-term Conference

IAPH 1st Vice-president Santiago Milà (Port of Barcelona, Spain) followed with a presentation entitled "Ports making room for the boom: the case of the Port of Barcelona".

Representing the Cruise Lines International Association (CLIA), Brett Jardine of Australasia presented on what the world's largest cruise association dedicated to the promotion of the cruise industry is all about and what it does.

Strategy Meeting - Review of the IAPH governing structure and revision of IAPH Constitution & By-Laws

On 6 April, a special strategy meeting No.2 was convened by President Gilfillan to prepare a more specific action plan outlining what needs to be done to position IAPH for the future

and to survive a challenging and competitive business environment. More specifically, it was proposed that: A Council – merging the Board of Directors as the policy-making body and the Executive Committee as the chief executive body – be established;

- A small group of members prepare and develop the new draft Constitution and By Laws of the Association for submission to the Plenary of the Hamburg Conference, June 2015; and an alternative Officer election process be explored to provide for greater continuity of IAPH Officers.
- As mentioned above, the action plan was submitted in a form of a draft resolution to the Board of Directors meeting on April 7, which was consequently endorsed and adopted by the Board. (see page 12)

Decisions made at the Board Meeting

1. Settlement of Accounts 2013 was adopted.
2. It was confirmed that an election will be called in each of the three regions to fill three vacancies in the Executive Committee as soon as practical after the Sydney Conference and that the process to elect a new vice-president from the Africa/Europe Region to succeed Santiago Mila will start in the latter half of 2014.
3. It was confirmed that the 29th IAPH World Ports Conference will take place at the Congress Center Hamburg, in Hamburg, Germany, from 1-5 June 2015 with the theme "City of Hamburg –calling at the smartPORT" and further that the 30th Conference will take place at Bali Nusa Dua Conference Center, Nusa Dua, Indonesia, in May 2017, to be hosted by Indonesia Port Corporations I, II, III and IV.
4. The following two resolutions were adopted:
 - Resolution on Creation of a Council to Replace the Board of Directors and the Executive Committee (see page 12)
 - Resolution Expressing Appreciation (to the host) (see page 13)

IAPH Awards 2015

For sharing best practices and experiences, IAPH recognises and honours excellence in port management and operations through its biennial award programme.

- Akiyama Award
- Hamburg Open Award
- Port Communications Award
- Port Environment Award
- Information Technology Award

Only IAPH members are eligible for the programme and the deadline for entry is 31 December 2014.

Timetable

- **May 2014**
Initial announcement / Call for entries
- **31 December 2014**
Deadline for submission of entries
- **January-March 2015**
Initial screening and shortlisting candidates
- **April 2015**
Final decision and announcement
- **Award presentation (1-5 June 2015)**
The 29th IAPH World Ports Conference in Hamburg, Germany.

For full details, please visit our website at:
<http://www.iaphworldports.org/awards2015.aspx>



Working Sessions programme: 8-9 April 2014

Keynote Address

- 'Game Changer' expansion of the Panama Canal
Luis Ferreira, communications specialist and engineer – canal expansion programme, Panama Canal Authority

Session 1: Port Automation

- A global perspective
Dr Yvo Saanen, managing director, TBA, the Netherlands
- The Australian challenge
Alistair Field, director, Patrick Terminals and Logistics, Australia
- Automation process solutions
Dr Tero Kokko, VP Horizontal Transportation, Kalmar, Finland

Session 2: Port Planning and Investment

- Asciano's Australian vision
Murray Vitlich, Director, Strategy and Business Development, Asciano, Australia
- Automation of Trapac Automated Container Terminal
Milind Desai, PE, SE, senior project manager, CH2M Hill
- Global impacts of ship size development and liner alliances on port planning and productivity
Neil Davidson, senior analyst – ports and terminals, Drewry Maritime Research, UK

Session 3: Women Driving Success

Moderator: Diane Edwards, chair, IAPH Women's Forum

- Port operations – women driving success
Tony Gibson, CEO, Ports of Auckland
- Jeanine Drummond, marine compliance specialist, Caltex Australia

Session 4: Keynote Address

- Raising the *Costa Concordia* – the salvage challenge
Todd Busch, senior vice-president and general manager, technical services, Crowley Maritime Corporation, USA

Session 5: Big – Bigger – Biggest

- Biggest bulk minerals export port in the world
Roger Johnson, CEO, Port Hedland Port Authority
- World biggest box ship – enter the Triple E
Nicolaj Noes, CEO, Maersk Australia
- Preparing for the world's biggest box ship
LEE Eung Hyuk, manager, international cooperation team, Busan Port Authority

Session 6: Port – Infrastructure and Interfaces

- Boosting port effectiveness
Lutz Birke, head of corporate and port strategy, Hamburg Port Authority
- The overweight containers issue
Shane Hobday, general manager operations, NSW Ports, Australia
- Mandatory weighing of inbound containers – the WIMS journey
Steve Gunn, general manager Port Botany Landside Improvement Strategy (PBLIS), Sydney Ports Corporation
- The LNG challenge
Fer van de Laar, managing director, IAPH Europe Office

Session 7: Other Challenges for Ports

- Cold ironing – the shore power debate
Hervé Lours, shore connection & marine vice-president at Schneider Electric France
- Ports making room for the boom: the case of the Port of Barcelona
Santiago Milà, deputy managing director, Port of Barcelona, Spain
- Cruise – ports making room for the boom
Brett Jardine, general manager at Cruise Lines International Association (CLIA) Australasia



Resolution on creation of a council to replace the board of directors and the executive committee

Adopted on 7 April 2014 by the IAPH Board of Directors at IAPH Mid-term Ports Conference and Board Meeting in Sydney, Australia

IAPH aims at improving its relevancy as the global voice of port authorities

Therefore it is necessary to aim at streamlining IAPH's internal organisation, empowering those who are key in the day-to-day business of the Association, as well as thinking about creating an updated governance for leadership positions.

More specific the attention points are:

1. Restructuring the governance of the Association by combining the current functions of the Board of Directors and the Executive Committee (EXCO) into a single body called a Council.
2. Resourcing, supporting, empowering and thereby changing the role of the Secretariat to actively and assertively deliver the messages of the Association and to lead and monitor the work and deliverables of the Technical Committees.
3. Resourcing the Technical Committees to deliver key initiatives which are of material impact on port business.
4. Consider the merits of having senior Regional representatives in the Americas, as well as Africa/Europe and Asia/Oceania.

The Board of Directors at its Regular Meeting in Sydney, Australia, on 7 April, 2014 decides:

1. To support the establishment of a Council by merging the Board of Directors as the policy-making body and the Executive Committee as the chief executive body.
2. To have the President established a small group of members to prepare and develop the new draft Constitution and By Laws of the Association in this respect.
3. To reaffirm that a draft Constitution and By Laws will be submitted to the Plenary session of the IAPH World Ports Conference, Hamburg, Germany, June 1-5, 2015 for adoption.
4. To explore an alternative Officer election process which provides for greater continuity of Officers as well as new approaches to fulfill leadership positions by those Officers

who are best able to direct IAPH as the industry voice into the future. Such election process will specifically seek to move away from the current time based seniority system, and replace it with a more open ended merit system.

Considerations may be given to:-

- Frequency of elections
- Eligibility for election
- Maximum term(s), if any, of Officers.
- Maintaining a fair regional representation.
- How to transition to the new structure – giving consideration to the expectations of existing VP's
- Mechanisms for removal of underperforming Officers.
- Roles and interaction of Secretariat, Officers, and Council
- Any other matters considered relevant to enhancing the effectiveness of the IAPH leadership group.



Resolution on **expressing appreciation**

Adopted on 7 April 2014 by the IAPH Board of Directors at IAPH Mid-term Ports Conference and Board Meeting in Sydney, Australia

WHEREAS, the Mid-term Ports Conference and Board Meeting of the International Association of Ports and Harbors convened at the Four Seasons Hotel in Sydney, Australia, from April 6 to 10, 2014, has been in all respects successful due to the wonderful organization and execution of the business and social programs.

NOW THEREFORE BE IT RESOLVED that on this Seventh Day of April on the occasion of the Mid-term Ports Conference and Board Meeting of the International Association of Ports and Harbors, the Board of Directors assembled in Sydney, Australia, hereby does extend its gratitude to the following:

Mr Grant Gilfillan
Chief Executive Officer and Director, Sydney Ports Corporation

Members of the Conference Organising Committee

AND BE IT FURTHER RESOLVED that our thanks also go to the Chairmen and Speakers of the entire conference; to the Sponsors, to ICMS Australasia Pty Ltd.; to other generous sponsors; to the media for their respective support and contribution to the success of the Conference, and

Also those in various capacities, including spouses, partners and accompanying persons for their participation in the Mid-term Ports Conference and Board Meeting of this Association.



Africa/Europe Regional Meeting Amsterdam

Hosted by the Port of Amsterdam, the IAPH Africa/Europe Regional Meeting and Port Forum was successfully held at NH-Barbizon Palace Hotel, Amsterdam, the Netherlands on 20-22 November 2013.

More than 50 participants, both IAPH members and non-members, took part in a port forum organised by the host under the banner theme of *"Our ports of the future – developing the potential"* on 12 November. The forum was officially opened by Freek Ossel, alderman and deputy-mayor of the City of Amsterdam, who officially welcomed the delegates to his cosmopolitan city, stressing the close partnership that has long existed between the city and the port.

The Port of Amsterdam's president and CEO, Dertje Meijer, took to the podium to introduce her port as the world's largest for petro-products, with total cargo volumes steadily increasing over the past three years. Ms Meijer emphasised the importance of enterprise culture in managing the port's business and how, as a consequence, Amsterdam has been successful in its efficient and smart use of land property.

She then set the stage for a debate on co-operation between Africa and Europe, noting that Amsterdam has traditionally been closely tied to Africa – for instance, as a major storage place for cocoa imported from Africa – and thus Amsterdam is an ideal place to discuss co-operation between Africa and Europe.

In closing Ms Meijer asked how we should build a port of the future, then suggested that the keywords should be

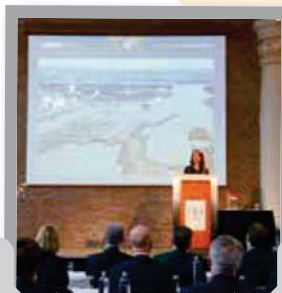
'co-operation' and 'value-creation', saying: "We all stand to benefit from each other, [through] creating partnerships and facilitating value-creation toward greater prosperity."

Her keynote was followed by nine presentations, moderated by Max Boodie, focusing on three main themes:

- Development in ports – from landlord to multi-development in ports
- Infrastructure & environment
- Logistics

To wrap up discussions, IAPH 1st Vice-President Santiago Milà took to the podium to emphasise that the port industry has changed greatly in the past 35 years, bringing about new improvements to the industry. He concluded by saying: "That is why we have to learn from each other for sharing best practices and IAPH offers a great network for co-operation."

Following the conclusion of all sessions, delegates enjoyed a canal boat tour of the city of Amsterdam before transferring to Het Scheepvaartmuseum (The National Maritime Museum) for dinner. On 22 November the delegates were taken on a tour of the port of Amsterdam and the meeting ended with lunch on board a boat.





Decision/report made at Regional Meeting

Some 30 IAPH members from across Africa and Europe gathered in Amsterdam on Wednesday, 20 November, to attend the IAPH Africa/Europe Regional Meeting. Chaired by IAPH 1st Vice-President Santiago Milà, the meeting discussed a number of agenda items as follows:

- **Election of IAPH 3rd vice-president from the Africa/Europe region**

The region confirmed that there will be an election around the summer of 2014 to elect someone representing a regular member port in the region to serve as 3rd vice-president for the term of 2015-2017.

- **International liaison report**

The region heard from Fer van de Laar, IAPH Europe Office, on co-operation with IADC (International Association of Dredging Companies), who was followed by Kris De Craene, Port of Antwerp, Belgium, who spoke about PIANC Working Group # 150 Green Ports, and then by Professor Han Ligteringen, UNESCO-IHE, the Netherlands, regarding the institute's post academic courses.

- **Updates on the World Ports Conference in Hamburg 2015**

Sabine Stüben, Conference vice-president, updated the participants on the latest status of preparation for the 29th IAPH World Ports Conference in Hamburg, Germany, 1-5 June 2015, to be staged under the theme of "City of Hamburg – Calling at the smartPORT".

- **Presentation on IAPH Survey on Port Performance Indicators**

The chair of the Port Operations & Logistics Committee, Yossi Bassan, made a presentation on the outcome of IAPH survey on port performance indicators that was conducted in 2013 to monitor our member ports' or terminals' current situation in measuring container terminal operation efficiency using Port Performance Indicators (PPI). Prior to conducting this survey, Bassan had been invited to the UNCTAD's Ad Hoc Expert Meeting on Assessing Port Performance, Geneva, Switzerland, on 12 December 2012, where he made a presentation on this interesting topic on behalf of IAPH. Bassan mentioned that 51 responses from IAPH members were received, which was a 27.6% response ratio, and recommended that IAPH consider creating a tool box for PPI formulas as it is now used as a working tool. He further mentioned that port performance (port authority) and terminal performance (terminal operators) are different and, as such, what is needed now is an exact formula and a definition of PPI.

Port Forum Programme – Amsterdam, 21 November 2013

- **The future of African ports**

Gichiri Ndua, managing director, Kenya Ports Authority

- **Customs ... a partner in logistics**

Oscar Brenninkmeijer, Amsterdam customs director, Customs Administration of the Netherlands

- **LNG: sustainability in transport**

Frits Eulderink, COO, Royal Vopak, the Netherlands

- **Sustainable mobility: how can transport make a difference?**

Els de Wit, deputy head, cars and fuels division, Ministry of Infrastructure and Environment, the Netherlands

- **Africa logistics**

Olivier de Noray, Bolloré, France

- **Toward entrepreneurial port management**

Professor Peter de Langen, Eindhoven University of Technology and principal consultant at Ports & Logistics Advisory, the Netherlands

- **Financing options for port development in Africa**

Frank Luisman, director, Maritime & Transport Business Solutions (MTBS)

- **Embracing the future to provide the most efficient maritime services within the West African sub-region**

Richard Anamoo, director general, Ghana Ports and Harbours Authority, Ghana

- **Vlisco – fashion and design**

Mieke Damen, executive director/vice-president supply chain, Vlisco Group, the Netherlands



Technical Committees

Technical Committees, being regarded as the backbone of IAPH, are tasked to study a range of common-interest issues and concerns to the world port community

They are also assigned to prepare or propose IAPH position papers and resolutions on critical issues in maritime fields for submission to international agencies, including IMO, to advocate the principles of IAPH.

In Sydney in April 2014, nine technical committees, including a new Cruise Committee, divided into three groups to discuss firstly the interim work progress made so

far in this term and secondly the new work plans to be tackled by the Cruise Committee for this term.

The interim outcomes of these efforts, and several final technical reports, are contained in the minutes of each committee meeting. Please access each 'committee room' on the IAPH website at:

<http://www.iaphworldports.org/CommitteeRoom.aspx>

1 Group for Communications & Training (Group I)



1.1 Communication and Community Relations Committee

Chair: Arley M Baker, Port of Los Angeles, USA

Mission:

1. Provide a training program for developing ports.
2. Review and improve internal and external communications of the Association.
3. Build a knowledge base for members concerning how to deal with community relations.

Issues discussed at the Sydney committee meeting:

- *Themes of IAPH Awards 2015*
Themes for IAPH essay contests – for the “Akiyama Award”, the “Hamburg Open Award” together with the “IAPH Port Communications Award” – were adopted
- *IAPH Training Scholarship*
To enhance utilisation of the programme by member ports in developing countries, various ideas to reform the IAPH Scholarship Program were discussed, including increasing the maximum amount per scholarship
- *Creating a new IAPH website*
It was decided to develop a new IAPH website, to officially launch at the Hamburg Conference in June 2015

1 Group for Communications & Training (Group I)



1.2: Port Finance & Economics Committee

Chair: Dov Frohlinger,
Israel Ports Development and Assets, Co, Ltd, Israel

Mission:

1. Monitor, collect, analyse and disseminate information relative to port accounting principles, budgeting, project financing, financial instruments/lending, economic feasibility studies, port economic contributions studies, tariffs and other issues related to the port finances and economics.

Issues discussed at the Sydney committee meeting:

- *Cruise business in the Port of Hamburg*
- *Strategies of Global Terminal Operators with Trend of Merger and Acquisition*
- *Performance-based Stevedoring Leases*
- *Benchmarking Port Authority Activities with Key Performance indicator (KPI)*

Results of the following committee projects were reported:

- Database on Financial and Economics Issues of IAPH Member Ports
- Survey on Best Practices of Terminal Tender and Concession Agreement



1 Group for Communications & Training (Group I)



1.3 Cruise Committee

Chair: Monica Bonvalet,
Grand Port Maritime de Marseille, France

Mission:

1. Assist ports to attract, develop and maximise the benefits of cruise operations and marketing of port cruise facilities and cruise itineraries.
2. Assist ports and cruise lines to develop better relationships between the ports, the cruise lines, the cruise operators and the cruise facilities management, to include, among others, discussions on best practice and implementation of leasing agreements between ports and terminal operators.
3. Monitor, collect, analyse and disseminate information pertaining to the latest developments in the global cruise industry including passenger statistics, ship size trends, safety of cruise ships and environmental matters.
4. Monitor, collect, analyse and disseminate information pertaining to planning, design, construction, maintenance and improvement of cruise terminals and related navigation channels, cruise port services, and cruise port operations/management.
5. Monitor, collect, analyse and disseminate information pertaining to City-Port relationships as far as cruise operations are concerned and showcase the current practices in this respect.
6. Assist ports to develop a good relationship with cruise-related organisations such as global and regional cruise associations and local tourism organisations.
7. Create the requisite social media and communications means (facebook page, specific newsletter...) as far as they relate to cruise operations.

Issues discussed at the Sydney committee meeting:

- At this kick-off meeting of the committee, it agreed to tackle various issues relating to cruise and ports by establishing new work plans for this term.

2 Group for Port Safety, Security & Environment (Group II)



2.1 Port Safety & Security Committee

Chair: K Subramaniam,
Port Klang Authority, Malaysia

Mission:

1. Collect, interpret and summarise for the Association the latest relevant information concerning port safety and security requirements, initiatives and best practices.
2. Provide analysis and draft positions on port safety and security matters to be placed on the agenda of international organisations such as IMO, ILO, ISO, WCO, IALA, etc.

Issues discussed at the Sydney committee meeting:

- *Overweight or Incorrectly Declared Container Issue*
The IMO's decision to introduce mandatory weighing of containers before loading onto ships, by amending its international convention of the Safety of Life at Sea (SOLAS) on regulation VI/2.
- *Acts of Piracy*
The current situation for piratical activities was reported, based on the IMB 2013 report.
- *Newly Built Tankers carrying Low-Flashpoint Cargo (LF cargo)*
The new IMO requirements for these vessels, and their possible effects on port operations, were discussed.
- *Business Continuity/Contingency Plan (BCP) in Port*
Recognising the importance of establishing such BCPs in ports to address future threats of disaster, the committee decided to carry out a member ports survey on the issue.
- *Safety issues of LNG bunkering in ports*
It was reported that "Guidance on Safe LNG Bunkering" was under development by the WPCI's Working Group on LNG-fuelled vessels.



Technical Committees

2 Group for Port Safety, Security & Environment (Group II)



2.2 Port Environment Committee

Chair: David Padman,
Port Klang Authority, Malaysia

Mission:

1. Monitor trends in environmental areas that affect ports including, but not limited to, air quality, dredging/ dredged material disposal, soil remediation, ballast water, habitats, ship wastes and reception facilities.
2. Provide information on port environmental matters to the Association concerning positions put forth on behalf of IAPH at international organisations such as IMO, IALA, UNCTAD, ILO, etc.
3. Develop a Green Port Program and develop a framework.
4. Coordinate with PIANC Environmental Commission by active participation of IAPH members on PIANC working groups, consistent with the IAPH-PIANC joint agreement.
5. Maintain a close liaison with other environmental and dredging organisations such as AAPA, CEDA, WODA, USACE, IADC and others.
6. Oversee activities of the WPCI.

Issues discussed at the Sydney committee meeting:

- *IMO Marine Environment Protection Committee (MEPC) 66th session (April 2014) updates*
- *World Ports Climate Initiatives (WPCI) updates*
For details, please see WPCI (pages 22-23)
- *Ballast Water Convention updates*
Possible effects on port of entry into force of the Ballast Water Convention were discussed.
- *Port Reception Facilities updates*
Current measures taken by EU ports on Port Reception Facilities Issue were reported focusing on the difference of regulation between International Convention (MARPOL) and EU directives.
- *The IAPH Environment Award 2015*
Themes to be applied for the Award 2015 were agreed.
- *Cooperative Work with PIANC*
Cooperative projects with PIANC Working Group (WG) on port-related environment issues that were completed in this term were reported.

2 Group for Port Safety, Security & Environment (Group II)



2.3 Legal Committee

Chair: Frans van Zoelen,
Port of Rotterdam Authority, the Netherlands

Mission:

1. Initiate, follow-up, study and recommend proposed action to be taken on behalf of IAPH concerning any issues in which the collective interests of port authorities are brought into question from the legal point of view.
2. Follow and if necessary intervene in international arenas which produce legal instruments relevant for IAPH, especially the Legal Committee of IMO.
3. Assist other technical committees of IAPH with respect to relevant legal matters and to international legal instruments promoted by international organisations.

Issues discussed at the Sydney committee meeting:

- *Main Issues of IMO's Legal Committee 101st meeting (April/ May 2014)*
- *Project: "The draft chapter on Port Regulations for the IAPH Introduction to Maritime Law for Port Officials"*
The chapter to be included in IAPH's "Introduction to Maritime Law for Port Officials" was reported.
- *Project: "Drafting a chapter on Insurance for IAPH's Introduction to Maritime Law for Port Officials"*
As a new project, it was decided to draft a chapter on insurance matters – in co-operation with the TT Club – for IAPH's "Introduction to Maritime Law for Port Officials".
- *Project: "Drafting a chapter on Salvage for IAPH's Introduction to Maritime Law for Port Officials."*
It was also agreed to include a paper on the "Law of Salvage" as a chapter for IAPH's "Introduction to Maritime Law for Port Officials".



3 Group for Port Development, Operations & Facilitation (Group III)



3.1 Port Planning & Development Committee

Chair: Wolfgang Hurtienne, Hamburg Port Authority, Germany

Mission:

1. Monitor, collect, analyse and disseminate information pertaining to development, planning, design, construction and maintenance of port and harbor facilities.

Issues discussed at the Sydney committee meeting:

- *Best practices of a simple IT Trucking System for efficient gate control of container terminal*
 - *Effects of the Arctic Sea Routes (NSR & NWP) Navigability on Port Industry*
 - *Effect of Automated Container Handling on port planning*
- Completion of a project tackled in conjunction with PIANC – “The Guidelines on Harbor Channel Design” – was reported.

3 Group for Port Development, Operations & Facilitation (Group III)



3.2 Port Operations & Logistics Committee

Chair: Juan A Delgado, Port Authority of Valencia, Spain

Mission:

1. Monitor, collect, analyse and disseminate information and elaborate recommendations pertaining to the improvement of port services, port operations, port and terminal management considering the port as an inter-modal link and crucial node of the logistics chain.

Issues discussed at the Sydney committee meeting:

- *Port Performing Indicators*
Various efforts of operational efficiency management practiced in Sydney Port were reported.
- *Recent Topics of Containerisation in Japan*
Japanese ports' efforts to improve efficiency of port operations using state of the art of technologies were reported.

3 Group for Port Development, Operations & Facilitation (Group III)



3.3 Trade Facilitation & Port Community System Committee

Chair: Frédéric Dagnet, Grand Port Maritime de Marseille, France

Mission:

1. Provide information concerning the latest developments in technology and the implications to ports for information processing and flows which are required to facilitate the movement of cargo and ships.
2. Monitor developments at international organisations which might affect trade facilitation of the ports industry and provide information concerning positions to be taken by the Association.

Issues discussed at the Sydney committee meeting:

- *Developments on trade facilitation and PCS made at international organisations such as WCO, UN/CEFACT*
- *Presentation by INCU (International Network of Customs Universities) showing their activities closely related with WCO*
- *Presentation on Introduction of PCS to other transportation model*
- *IT Award 2015*
Themes and procedures for the Award were discussed and agreed.



Technical Committee reports and database

When a Technical Committee completes a project, it publishes a final report or database. IAPH members can access these outcomes for free at:
<http://www.iaphworldports.org/Library.aspx>

A report and a database were already released by the Port Finance and Economics Committee (PFEC) and by the Legal Committee (LGLC) respectively. Five other reports/database by the Communication and Community Relations Committee (CCRC), the Port Safety and Security Committee (PSSC), the Legal Committee (LGLC) and the Port Planning and Development Committee (PPDC) are in the pipeline for releasing by the end of this term (2013-2015).

Reports/Database published



'Database on Financial and Economics Issues of IAPH Member Ports' by the Port Finance and Economics Committee



Project Leader: Dov Frohlinger, Chair of the committee.

This database supports committee members to access information provided by IAPH member ports on their website categorised by issues as Corporate Information, Environmental Issues, Financial Issues and International Port Economics Studies etc.



For the database, please go to: <http://www.iaphworldports.org/Library/Database.aspx>
(IAPH members only)



'The Law of Salvage, as a Chapter for IAPH's Introduction to Maritime Law for Port Officials' by the Legal Committee



Project Leader: Frans van Zoelen, Chair of the committee, and Dr Anthony Morrison as a contributor.

"The Law of Salvage" was drafted as a chapter for IAPH's Introduction to Maritime Law for Port Officials focusing on legal aspects of salvage operation.



For the details, please see the minutes of the committee meeting in Sydney:
<http://www.iaphworldports.org/CommitteeRoom/WorkPlanLegalCommittee/DocumentsLegalCommittee.aspx>
(IAPH members only)



Reports/Database in the pipeline



'A New IAPH Website' by the Communication and Community Relations Committee



Project Leader: Arley M Baker, Chair of the committee.

In the pipeline: A project to create a new IAPH Website is expected to complete by the 2015 IAPH Hamburg Conference.



'IAPH Member Survey on Business Continuity Plan (BCP)' by the Port Safety and Security Committee



Project Leader: K Subramaniam, Chair of the committee.

In the pipeline: This project is to grasp current situation among our member ports and terminals on their Business Continuity Plan (BCP) established to address to future threats and risks of disasters on ports. The report of the survey results will be released by the 2015 IAPH Hamburg Conference.

For survey questionnaires, please go to:

http://www.iaphworldports.org/Portals/100/committee_room/PSSC_BCP_Survey_140603.doc



'Drafting a Chapter on Insurance for IAPH's Introduction to Maritime Law for Port Officials' by the Legal Committee



Project Leader: Frans van Zoelen, Chair of the committee.

In the pipeline: A joint project with TT-Club to draft "A Chapter on Insurance" for IAPH's Introduction to Maritime Law for Port Officials was approved to be tackled at Sydney meeting of the committee. The project is expected to be completed by the 2015 IAPH Hamburg Conference.



'Best practices of a simple IT Trucking System for efficient gate control of container terminal' by the Port Planning and Development Committee



Project Leaders: Masahiko Furuich, Vice Chair of the committee; Kazuo Motono, Member of the committee.

In the pipeline: By reviewing the on-site survey at the Chennai Port and other relevant data and information, the introduction of IT systems for container gate control at medium and small size ports will be examined. The outcome of the project will be revealed at the 2015 IAPH Hamburg Conference.



'Effect of Automated Container Handling on Port Planning' by the Port Planning and Development Committee



Project Leader: Masahiko Furuich, Vice Chair of the committee; Atsushi Fujii, Member of the committee.

In the pipeline: Effects of the introduction of automated container terminals at ports from the perspective of port planning will be examined and summarised. The outcome will be revealed at the 2015 IAPH Hamburg Conference.



Update on the World Ports Climate Initiative

The World Ports Climate Initiative in close coordination with IAPH Port Environment Committee launched its fight for reduction of greenhouse gases (GHGs) in November 2008.

Five projects are already finalised or in the process of implementation while the remaining three projects are in progress. Participation in the Working Groups is open to all ports. For details of all the WPCI projects, go to: <http://wpci.iaphworldports.org>

WPCI Projects finalised and/or launched

IAPH Air Quality & Greenhouse Gas (GHG) Tool Box

The web-based IAPH Tool Box for Clean Air Program, which provides valuable information to reduce air pollution in port areas, was expanded to include GHG mitigation measures, in response to increased concerns for the effects of global climate change among port communities around the world. For access to the Tool Box, go to: <http://goo.gl/tMsbcx>

Guidance Document of Carbon FootPrinting (CFP) for Ports

The WPCI Carbon Foot Printing Work Group, led by the Port of Los Angeles, released a Guidance Document as reference for ports intending to develop or improve their GHG emissions inventories. For access to the guidance document, go to: <http://goo.gl/419em8>

The “Scope 1 & 2 CO₂ Calculator” was also presented at the IAPH Busan meeting in May 2011. The calculator enables a port to estimate not only its current volume of GHG emissions but also the possible reduction in carbon emissions by using alternative energy resources. For access to the document, go to: <http://goo.gl/4nngYl>

Onshore Power Supply (OPS)

The Onshore Power Supply (OPS) Working Group led by Port of Gothenburg released a web-site in 2010 as a guidance tool for those world ports planning to implement OPS to reduce emissions of pollutants and GHGs within the port area. The OPS web-site was updated in July 2013 with additional new sections: IEC/ISO/IEEE 80005-1 High Voltage Shore Connection (HVSC) Systems within “Standardisation”; and “Suppliers” of OPS systems. To access the website, please go to: <http://www.onshorepowersupply.org>

Environmental Ship Index (ESI)

The ESI Project Team, led by the Port of Rotterdam, established an environmental scheme to reduce polluted air emissions and GHGs from ships, using a universal environmental index to measure an individual ship's emission performance. Participating ports take on the role of providing incentives for ships with a good ESI score.

ESI started its programme in January 2011 after setting up its website in November 2010. As of July 2014, more than 2,300 ships with valid ESI scores, and around 30 ports and organisations acting as incentive providers, have taken part in the programme.

To access the website, go to: <http://esi.wpci.nl>

Intermodal Transport

Intermodal transport, using multi-modal transportation, is regarded as the most efficient way of carrying cargoes, while reducing transportation costs and air emissions including GHGs.

The project team led by the Port of Amsterdam examined a strategy to allow ports to improve intermodal transport or develop modal shift. A final report, “Port Intermodal Strategy” was released in April 2013.

For access to the final report, go to: <http://goo.gl/9YurO0>



IAPH • PORT ENVIRONMENT COMMITTEE


WPCI

WPCI Projects in progress



LNG-fueled vessels

The LNG-fueled vessels project was newly added to WPCI in May 2011, to consider the possibility of utilising LNG as ship fuel, because of its low emissions of polluted gases, particulates and GHGs.

The project team, led by the Port of Antwerp, is tasked with preparing guidelines – “Bunker Checklists and Accreditation”, “Risk Perimeters” and “LNG awareness” – for safety procedures and facilities development for the supply of LNG fuels to ships in ports. The new website about LNG as ship fuel was launched in summer 2014.

To access it, go to: <http://www.lnqbunkering.org>



Cargo Handling Equipment

To reduce emissions of air pollutants and GHGs from cargo handling equipment in port areas, the project team will collect best practices from advanced ports that have introduced low-emission / high-efficiency cargo handling equipment.

For access to a presentation on “Hybrid Yard Hostler” at the Port of New York / New Jersey, go to: <http://goo.gl/P3Kr1H>



Lease Agreement Template

A Lease Agreement Template aims to include a sustainable approach within lease contracts. Ports’ tenants would agree to meet requirements relating to control measures to reduce air pollution and GHGs from their facilities. The project team will prepare model templates of such lease contracts for ports’ tenants.



IAPH women's forum

The IAPH Board of Directors' meeting held in Jerusalem on 22 May 2012, passed a resolution to establish an IAPH Women's Forum

It will aspire to advance and empower women in the maritime industry; create a platform for discussing women's issues in the maritime industry; look at ways to encourage women to join the industry; and to promote training programs enabling women to better compete for positions at all levels, including those previously not open to women.

In addition to annual meetings, members of the forum actively exchange information on women in maritime industry on the following SNS:



<https://www.facebook.com/groups/126585944210142>



<http://goo.gl/bgaVYQ>




Diane Edwards, Ports of Auckland Ltd, New Zealand







Issues discussed at Sydney meeting:

The IAPH Women's Forum has been very active this year with a number of initiatives underway. At the IAPH Mid-term Ports Conference in Sydney, a group of women met to determine some priorities for the forum and, following discussion, various project workstreams were established with the following goals:

 1: To increase the visibility of women in the industry and the support available to them – workstream led by Justin Camoin from France. So far two social media networks are being targeted with active Facebook and Linked-In sites where news and articles are being posted and conversations held. Input has also been given for the Women's Forum section of the new website currently in development.

 2: To establish a scholarship to support women in our industry – led by Geraldine Knatz from the USA. At present, draft scholarship criteria have been drawn up and we are working through the funding and logistics that will be needed to administer the programme.

 3: To establish mentoring programme to develop women in our industry – led by Angelene Powell from New Zealand. A draft framework is currently being drawn up which will go out for consultation to a wider group later in later in 2014.

 4: To pilot an exchange programme aimed at providing women in our industry with overseas work experience. This will be designed to complement the mentoring programme – led by Siti Noraishah from Malaysia. At present discussions about an initial exchange programme are taking place between ports in Malaysia, New Zealand and the USA.

In addition, Naomi Kogon-Steinberg (USA), Diane Edwards (NZ) and several other members are active in developing links with other industry organisations which share our interest in developing women in our industry.

All the outcomes of this work will be presented at the 2015 IAPH Conference in Hamburg.



Reaching our members and beyond

IAPH keeps up to date with its membership and the wider shipping community in a variety of ways, including *Ports & Harbors* magazine, Facebook, and press releases and its website

Promoting IAPH

Ports and Harbors Magazine

IAPH publishes an official journal, *Ports & Harbors*, that is issued six times a year, with editorial input from IHS. *Ports & Harbors* is a medium – not only for IAPH members, but also for port professionals – to exchange views and opinions, obtain useful information and share best practices concerning the wide-ranging issues faced by ports and the maritime industry. Comments on the magazine or submission of articles (or materials or stories) are always welcome at ph@iaphworldports.org



IAPH Website

Revamped in March 2011, the IAPH official website continues to offer the latest news and information about IAPH and its activities. IAPH members are issued with a password that allows access to the full website, including *Ports & Harbors* magazine, the Technical Committee reports, and conference proceedings. A statistics section is updated annually, and presents the most recent data on the world container traffic, including port and country rankings; and on worldwide seaborne trade, classified by country and cargo.

Thanks to the IAPH Communication and Community Relations Committee, an intra-committee task force has been established to develop a new IAPH website, which is due to be launched at the Hamburg Conference in June 2015.





Press Releases

To make its position clear on issues of interest and concern to the membership, IAPH issues press releases on a regular basis, especially around the time of its conferences. To read all press releases, go to:

www.iaphworldports.org/IAPHPressReleases.aspx

IAPH on Facebook

IAPH has been on Facebook since June 2011. The number of users and followers is increasing as this social networking tool offers a link to the general public and a channel for dialogue. As at June 2014, IAPH FB has some 560 "likes". Please follow IAPH by clicking "like" on the IAPH FB:

www.facebook.com/iaphworldports?sk=wall

IAPH Online Newsletter

The IAPH Online Newsletter has been sent to around 1,500 subscribers on a bi-weekly basis since 2002 and contains up-to-date Association news, such as IAPH meetings, Technical Committee activities, member ports' news and other relevant information. Both members and non-members can receive the IAPH Online Newsletter. Please contact:

newsletter@iaphworldports.org

IAPH Membership Directory

The IAPH Membership Directory is revised once a year with support from IAPH co-ordinators. It provides easy-to access information on our members, such as contact addresses and port cargo statistics – useful when networking among IAPH members.





2013/2014 accounts

Balance Sheet

Depreciation of Japanese Yen against the major currencies as of the end of the year affected the IAPH's balance sheet in a favourable manner. As appreciation of the foreign investment securities in terms of Yen and the effects of the cost-cutting measures surpassed the revenue decrease from membership dues, the total financial net worth of IAPH as of the end of 2013 increased to ¥423.2 million, which was ¥41.1 million more than the previous year.

Balance sheets as of 31 December 2012 and 31 December 2013			(Unit: Yen)
Items	2013	2012	Difference
1: Assets			
Current assets	118,544,245	114,922,204	3,622,041
Cash and Deposits	116,922,559	111,281,447	5,641,112
Petty Cash	21,360	47,843	-26,483
Ordinary Deposits	20,485,199	24,526,404	-4,041,205
Fixed Deposits	96,416,000	86,707,200	9,708,800
Accrued Revenues	894,054	2,920,725	-2,026,671
Other Current Assets	727,632	720,032	7,600
Fixed Assets	345,699,096	312,097,717	33,601,379
Specified Fixed Assets	46,563,841	43,575,173	2,988,668
Retirement Benefits Fund	39,066,930	35,266,080	3,800,850
IAPH Training Scholarship Fund	1,581,505	2,293,247	-711,742
Akiyama Prize Fund	5,915,406	6,015,846	-100,440
Other Fixed Assets	299,135,255	268,522,544	30,612,711
Fixture and Equipment	23,652	28,901	-5,249
Investment Securities	295,369,620	264,751,660	30,617,960
Leasehold Deposits	3,741,983	3,741,983	-
Total Assets	464,243,341	427,019,921	37,223,420
2: Liabilities			
Current liabilities	2,004,589	9,638,632	-7,634,043
Accounts Payable	875,724	8,509,672	-7,633,948
Deposits Received	768,372	751,155	17,217
Deferred Revenues		20,387	-20,387
Reserve for Wages and Allowances	360,493	357,418	3,075
Fixed Liabilities	39,066,930	35,266,080	3,800,850
Reserve for Retirement Benefits Fund	39,066,930	35,266,080	3,800,850
Total Liabilities	41,071,519	44,904,712	-3,833,193
3: Net worth			
Restricted Net Worth	5,915,406	6,015,846	-100,440
Endowments	5,915,406	6,015,846	-100,440
Other Net Worth	417,256,416	376,099,363	41,157,053
Total Net Worth	423,171,822	382,115,209	41,056,613
Total Liabilities and Net Worth	464,243,341	427,019,921	37,223,420



Chair of the Finance Committee

Dear Sir

It is my privilege as Chair of the Executive Finance Committee to recommend the 2013 Financial Statements and Balance Sheet to the Executive for adoption and convey some general overview comments on the results achieved last year. Before doing so, it is appropriate to record a special thanks to the Secretariat for their efforts and support in carefully managing the Association's financial affairs given the tight budgeting constraint imposed. Their work to reduce costs or work within and below budgeted levels of expenditure is now the norm particularly so, when forecast revenues from membership dues do not eventuate.

I will direct my comments to three key aspects of the accounts which from my perspective warrant particular reference. Firstly, and as per my comments last year, the nature of the Association's revenue generation from Membership Dues worldwide and continuing difficulties with the exchange rates fluctuations and the Yen cross rate, means there will be continuing pressure on the revenue aspects of the Association's affairs in today's environment. Despite that however, there are budgetary expectations on the amount that should be paid and collected from regular and associate members alike, and any failure to or delays in paying, places the financial affairs of the Association under pressure. In addition, the strain for Ports to pay their membership dues in full and on time, on account of continuing competitive pressure from shipping lines and the global financial crisis has meant our own Association's financial results were also adversely affected. The Secretariat has been actively pursuing the payment of Membership Dues and has to delicately balance the need to raise the awareness of membership obligations to pay in due time against the position of some ports in a difficult and challenging financial environment and ultimately the retention of those members or otherwise.

The second issue is the ordinary surplus this year and to note that without the gains from its currency position, the overall operating outcome would have still been negative with an effective operating loss of 1.4 million Yen. This is a considerable improvement from the comparative operating loss last year of 4.1 million Yen which the Secretariat should be commended for, but reinforces the vulnerability to the revenue issues referred to above.

The third area, is the continuing support from the Japanese IAPH Foundation to help underwrite aspects of the Association's costs which reinforces its ongoing commitment to the Association's wider goals.



The Secretary General's detailed comments are an accurate reflection of the individual areas in the accounts and highlight the extensive endeavours of the Secretariat in a number of key areas to limit the impact and effects of the non-collection of revenue dues. However, the overall profit of 11.2m Yen for the year was satisfactory, despite the challenging financial environment.

A clean audit report has also been received and the Secretary is to be congratulated for their overall efforts and diligence in the financial prudence of the Association's affairs.

Yours faithfully,

Garth Cowie

Chairman of the Finance Committee



Membership **update**

As of 30 June 2014, the Association comprises 325 members over 89 countries/economies. The regional breakdown for each type of membership is as listed below.

183 regular / temporary members

94 Asia / Oceania region

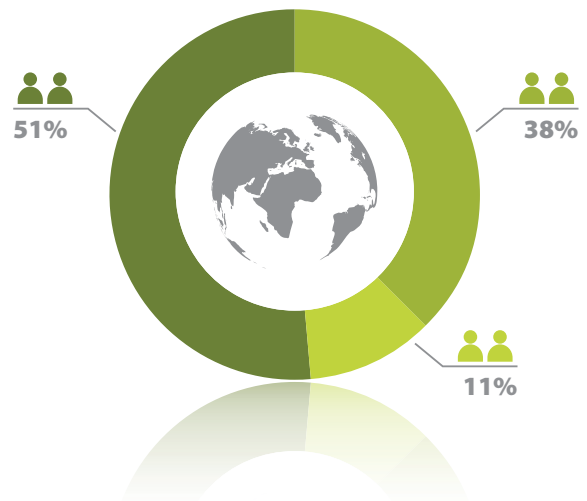
- 82 Asia region
- 12 Oceania region

69 Africa / Europe region

- 24 Africa region
- 45 Europe region

20 Americas region

- 12 North America region
- 8 South America region



142 associate members

65 Asia / Oceania region

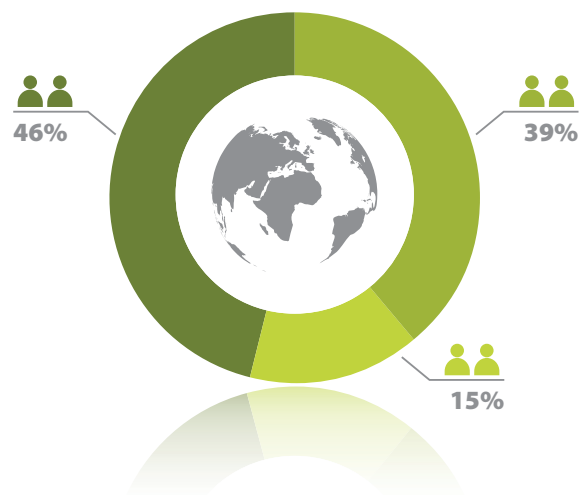
- 62 Asia region
- 3 Oceania region

56 Africa / Europe region

- 7 Africa region
- 49 Europe region

21 Americas region

- 16 North America region
- 5 South America region





Regular / temporary members (2013-2014)

From 1 July 2013 to 30 June 2014, **11** new members joined and **13** members left. These are listed below:

New members

- Marine and Water Bureau, Government of Macau (China)
- Port of San Francisco (US)*
- Philippine Ports Authority (PPA) (Philippines)
- Port of Beirut (Lebanon)
- Hakata Port Terminal Co, Ltd. (Japan)
- Puerto de Santa Marta (Colombia)
- Port of Longview (US)
- Eastland Port Ltd (New Zealand)
- Sierra Leone Ports Authority (Sierra Leone)
- Port of Tanjung Pelepas (Malaysia)
- Ports North (Australia)*

* Temporary member

Withdrawals

- Indonesia Port Corporation I (Indonesia)
- Grand Port Maritime de Nantes Saint-Nazaire (France)
- Indonesia Port Corporation IV (Indonesia)
- TransInvestService Ltd (TIS) (Ukraine)***
- Hebei Port Group Co, Ltd (China)***
- Miyagi Prefectural Government (Japan)
- National Company Maritime Ports Administration SA Constantza (Romania)
- Port of Palm Beach (US)*
- Chennai Port Trust (India)
- Complexe Industriel Portuaire de Kribi (Cameroon)*
- Port of Rijeka Authority (Croatia)
- Qingdao Port Group Co, Ltd (China)
- Port of Tacoma (US)

* Temporary member

*** Terminated due to dues delinquency

Associate Members (2013-2014)

From 1 July 2013 to 30 June 2014, **8** new members joined and **8** members left. These are listed below:

New members

- TST Corporation (Japan)
- WorleyParsons (Canada)
- Technical University of Denmark (DTU) (Denmark)
- AMEC Environment & Infrastructure, Inc (US)
- TTPM International Consultants Ltd (UK)
- Mr Bart Noothoven Van Goor (UAE)
- Global Institute of Logistics (Ireland)
- ARK Technology ehf (Iceland)

Withdrawals

- Petro Environmental Services Company (PESCO) (Egypt)***
- Sea Service Ltd (Greece)***
- Pejman Gulf Company (Iran)***
- Port of Hamburg Marketing Association (Germany)
- NT Publishers BV (Netherlands)
- Samsung C&T, E&C Americas, Inc (US)
- Zebra Enterprise Solutions (US)
- DSM Dyneema (Netherlands)

*** Terminated due to dues delinquency



Executive Committee members for 2013/2015

Officers



President
Grant Gilfillan
CEO
Port Authority of New
South Wales, Australia



**1st Vice-President for
Africa/Europe Region**
Santiago Garcia Milà
Deputy Managing Director
Autoritat Portuària de
Barcelona, Spain

**2nd Vice-President for
Americas Region**
To be elected



**3rd Vice-President for
Asia/Oceania Region**
Priyath Wickrama
Chairman
Sri Lanka Ports Authority,
Sri Lanka

Immediate Past President
Geraldine Knatz, Ph.D
Former Executive Director
Port of Los Angeles, US



Conference Vice-President
Sabine Stüben
Head of Marketing &
Communication
Hamburg Port Authority,
Germany

Secretary General
Susumu Naruse
Secretary General, IAPH





Executive Committee members as of 30 June 2014

Africa/Europe region (six members)



- **Richard Anamoo**
Director General, Ghana Ports and Harbours Authority, Ghana
- **Dov Frohlinger**
Chief Operating Officer, Israel Ports Development and Assets Co, Ltd, Israel
- **Bisey Uirab**
Chief Executive Officer, Namibian Ports Authority (NAMPORT), Namibia
- **Leonids Loginovs**
Chief Executive Officer, Freeport of Riga Authority, Latvia
- **Eddy Bruyninckx**
CEO, Antwerp Port Authority, Belgium
- **Javier Gesé Aperte**
Deputy Director of cargo handling and passenger services, Puertos del Estado, Spain



Americas region (four members)

- **Ashley Taylor**
President, Point Lisas Industrial Port Development Corp, Ltd, Trinidad and Tobago
- **Curtis J. Foltz**
Executive Director, Georgia Ports Authority, USA
- **Alberto Díaz**
President, National Port Administration, Uruguay
- **Position vacant**

Asia/Oceania region (eight members)

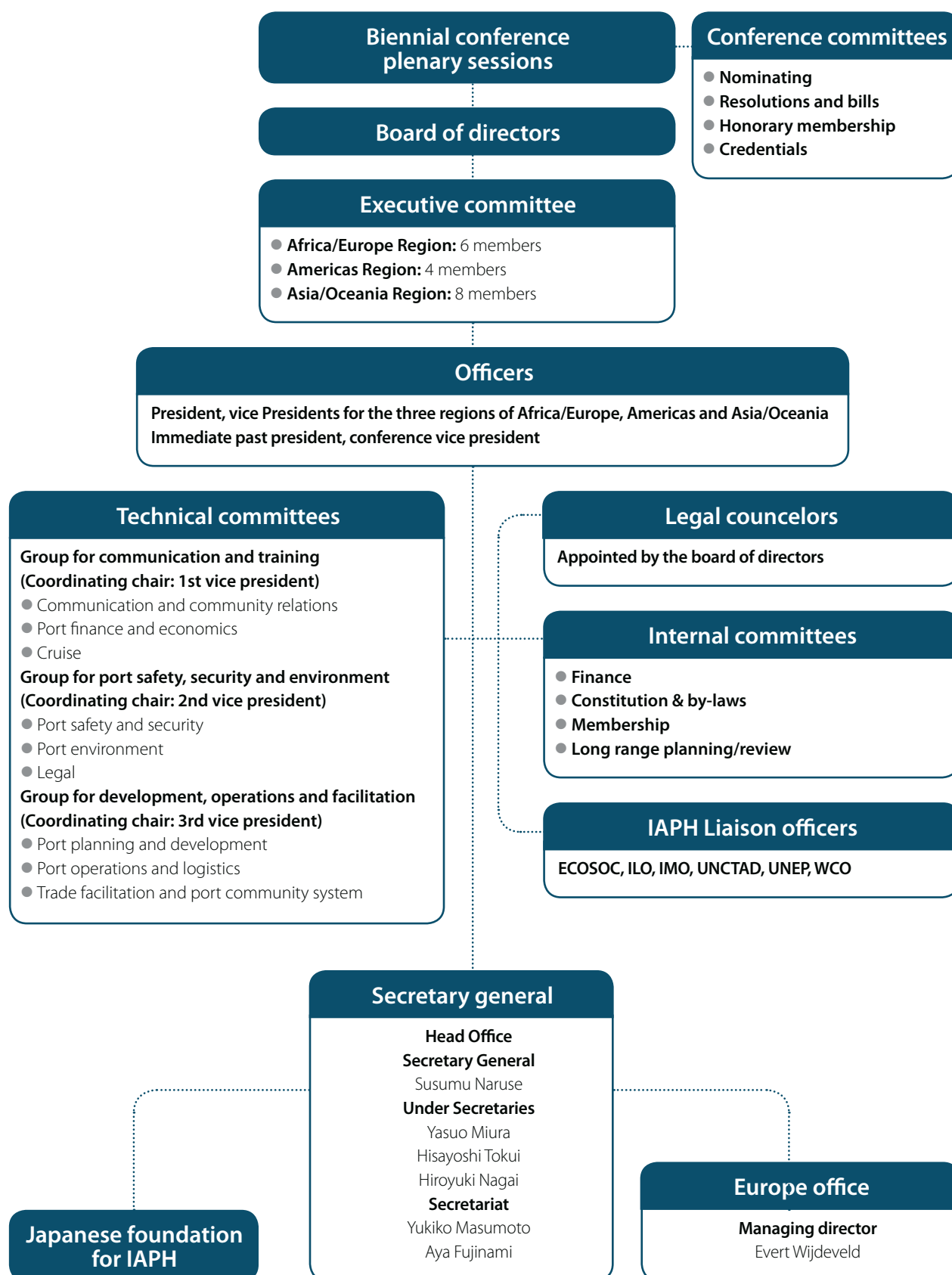


- **Jun-Kwon Park**
Director General of Ports and Harbours Bureau, Ministry of Oceans and Fisheries, Korea
- **Atsushi Fujii**
Director, Construction Department
Yokohama Port Corporation, Japan
- **Martin Byrne**
Chief Executive Officer, Port Nelson Ltd, New Zealand
- **Richard Joost Lino**
President Director, Indonesia Port Corporation II, Indonesia
- **LE Cong Minh**
Director General, Saigon Port Company Ltd, Vietnam
- **Abdul Wahab Al Diwani**
Director, UAE Marine Inspection and Survey Dept.
National Transport Authority, Abu Dhabi, UAE
- **David Padman**
General Manager, Port Klang Authority, Malaysia
- **Tai-Hsin Lee**
President, Taiwan International Ports Corp Ltd, China



Structure of International Association of Ports and Harbors







Head Office: 7th fl. South Tower, New Pier Takeshiba, 1-16-1 Kaigan, Minato-ku, Tokyo 105-0022, Japan



Tel: +81-3-5403-2770 / **Fax:** +81-3-5403-7651



Web: www.iaphworldports.org



Email: info@iaphworldports.org



Europe Office: Eikenlaan 24, 3297 XB Puttershoek, the Netherlands



Tel: +31 653 53 4995



Email: wijdeveld@iaph.eu