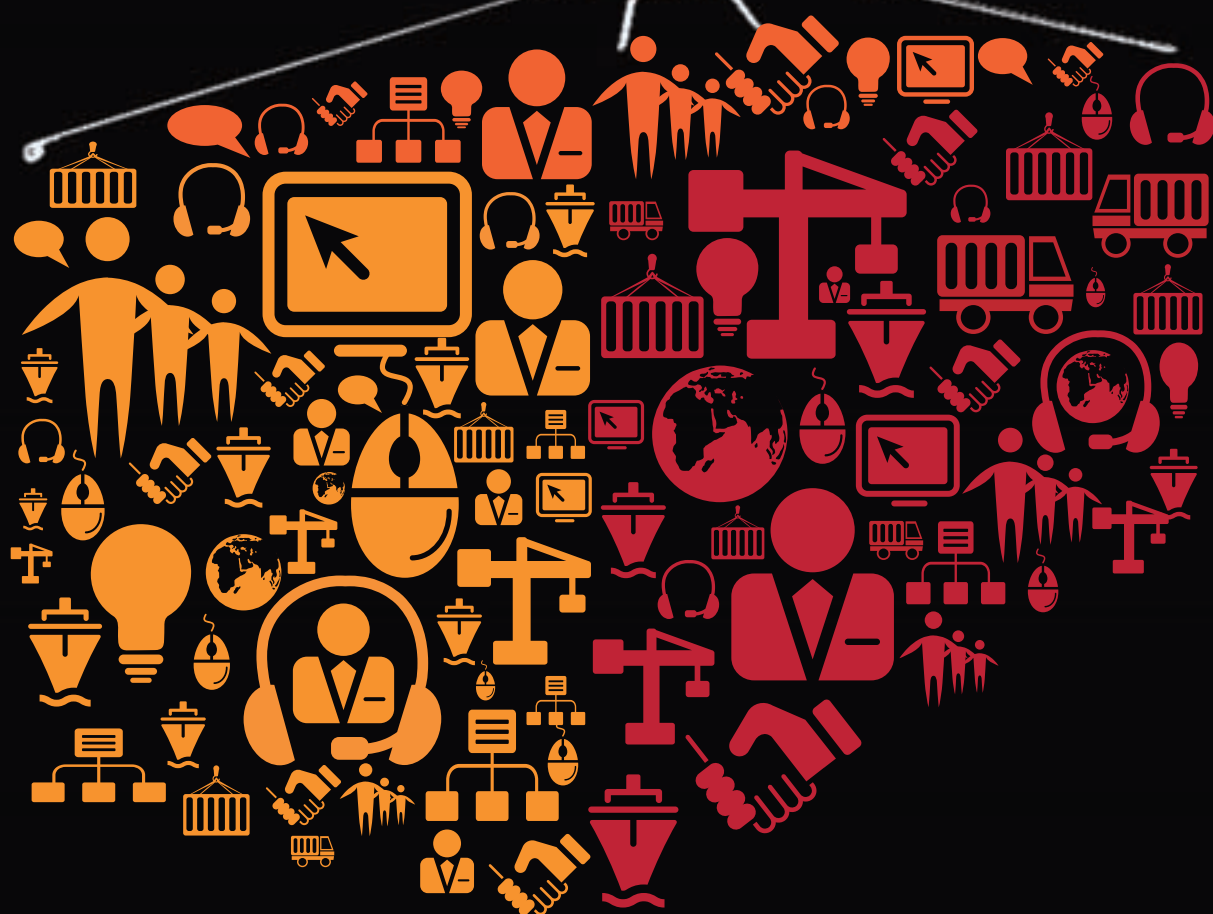


# IAPH

ANNUAL REPORT  
2011-2012





# About IAPH

The International Association of Ports and Harbors (IAPH) was founded in November 1955. Today, as the global alliance of the world port community, it represents some 190 ports and 140 port-related organizations of about 85 countries worldwide. The member ports together handle over 60% of the world's sea-borne trade cargo and nearly 80% of global container traffic.

IAPH meets every two years in odd-numbered years at its World Ports Conference, the largest gathering of the world port community. Port executives and experts coming from all parts of the world exchange views and experiences over a range of issues and challenges. Between World Ports Conferences, the Mid-Term Ports Conference/Board Meeting is held in even-numbered years to discuss common issues as well as internal matters of the Association. In addition, members of IAPH's three regions – Africa/Europe, Americas and Asia/Oceania – meet regularly at Regional Meetings to discuss common issues in a regional context.

IAPH actively addresses critical issues facing the port industry

through its technical committees. Currently, there are eight technical committees, respectively tasked to study implications and recommend policies and measures in such areas as port finance, port safety, security, environment, development, operations and IT application. Proactively, IAPH also plays a significant role in tackling global issues at maritime-related UN agencies and other international organizations. For this, IAPH is especially granted non-governmental organization consultative status by ECOSOC, ILO, IMO, UNCTAD, UNEP and WCO.

IAPH will continue to play a pivotal role as a unique global forum of the port industry in strengthening co-operation and sharing experiences among the world's ports. Moreover, to effectively deal with many global issues, IAPH will also actively collaborate with other international organizations for the sustainable development of the world economy.

To face new realities and challenges in this changing world, IAPH adopted at its Mid-term Board Meeting in Jerusalem, Israel, May 22, 2012, a new set of vision and mission statements and the objectives to achieve the mission.

## **Vision:**

The Global Ports' Forum for Industry Collaboration and Excellence

## **Mission:**

Promoting the interest of ports worldwide through strong member relationships, collaboration and information-sharing that help resolve common issues, advance sustainable practices and continually improve how ports serve the maritime industries.

## **Objectives to achieve the Mission:**

- Strengthen relationships among the member ports by facilitating interaction, dialogue, problem-solving and formulation of best practices
- Leverage member expertise through strong technical committees and programmes that create platforms focused on resolving complex port and maritime industry concerns and building greater efficiency and sustainability for ports worldwide
- Promote and demonstrate IAPH members' leadership and commitment to a cleaner, safer and more environmentally sustainable industry for the benefit of the global community
- Proactively co-ordinate with other international maritime and related organizations (such as IMO, UNCTAD, WCO, PIANC, etc.) and advocate global solutions to issues that impact IAPH members.

# Contents

**President's message**

**3**

**Secretary General's overview**

**4**

**Mid-term Conference, Jerusalem**

**6**



Secretary General Naruse reviews the activities and successes of the past year

**4**



A first in Jerusalem was the setting up of an IAPH Women's Forum

**12**

**Conference resolutions**

**9**

**Regional meetings**

**14**

**Technical committees**

**18**

**WPCI report**

**22**

**Publications and promotion**

**24**

**Membership update**

**26**

**2011/2012 Accounts**

**28**

**Your officers for this term**

**30**

**Structure and secretariat**

**32**



IAPH reaches its members through a number of promotional tools

**24**







# A strong anchor amid profound global changes

In the midst of another year of profound developments on the world's political and economic fronts, IAPH continues to provide a strong-anchored platform for ports worldwide to focus on common issues, share best practices and affect positive changes in the global port and maritime industries, as underscored by the Mid-Term Ports Conference in Jerusalem this past May.

While many of the sessions and committee group discussions at the Jerusalem event focused on industry trends and issues, we also came together as a group to look inward at our organization, update our mission, and establish a new vision for the organization as "The Global Ports' Forum for Industry Collaboration and Excellence."

Also worth noting was our establishment in Jerusalem of a

Port Finance and Economics Committee and a Women's Forum to be held at future annual conferences. These new components of IAPH show that we are an organization of members who know the value of human capital and the rich opportunities we have to learn from each other as port managers by engaging in discussions focused on finance strategies, negotiation techniques, and professional development – largely non-operational, non-textbook elements of port management.

It has been a productive year, thanks to the efforts of the many dedicated technical committee members who took on assignments with IAPH in addition to their 'day jobs'. This Annual Report highlights their achievements and provides an overview of an organization that continuously focuses on generating long-term value for both its members and the many industries we support.

Thank you for a great year, and I look forward to seeing all of you at the 28th World Ports Conference in Los Angeles, May 6-10, 2013.  
Yours truly,

Geraldine Knatz, PhD  
IAPH President  
Port of Los Angeles  
Executive Director





# Looking back at 2011-12

Secretary General Susumu Naruse reviews the organization's activities and successes in the past year

## The Mid-term Ports Conference in Jerusalem

Some 200 ports people from all over the world gathered together in Jerusalem in May 2012. We had a very successful port forum along with an IAPH Board Meeting. Following the spectacular opening ceremony, vigorous discussions were held on important issues surrounding the industry with prominent speakers at the two-day port forum.

Among many in-house items decided at the Board Meeting, the most important decision was to formulate the IAPH Vision Statement, IAPH Mission Statement and Objectives to be attained by IAPH, which had been discussed at the Long-Range Planning and Review Committee since the Busan Conference. In addition, the Board decided to set up the IAPH Women's Forum, a new technical committee, the Port Finance and Economics Committee, and to enter into an MoU with the European Sea Ports Organisation (see page 10).

Prior to the Mid-term Ports Conference, the following IAPH Regional Meetings have taken place over the past year:

- Africa/Europe Region in Antwerp, Belgium, December 2011
- Asia/Oceania Region in Colombo, Sri Lanka, February 2012
- Americas Region in Seattle, USA, September 2011 (AAPA Convention)

I would like to express my deepest appreciation to the host ports of these events, and in particular the Israel Ports Development and Assets Co Ltd.

## Membership

As of the end of April 2012, the Association comprised 331 members (a decrease of 11 members compared to the previous year) in 85 countries/economies. The following three regular members and have joined the association during the past year:

- JadeWeserPort Realisierung GmbH & Co KG (Germany)
- Canaveral Port Authority (USA)
- Port of Oakland (USA)

## Promotion of IAPH

In order to raise the profile of IAPH among the port and maritime industries and to expand our membership, IAPH has been striving to carry out the following missions:

- To develop Vision and Mission Statements (completed)
- To develop a new IAPH Logo (in progress)
- To develop a template for IAPH presentations (completed)
- To establish useful and easy-to-use databases (in progress)
- To issue press releases as often as possible (partially completed)
- To create additional technical committees that interest the members (partially completed)
- To use social networking services to disseminate IAPH information (in progress)

## Technical Committees and WPCI

The Technical Committees have been working in accordance with their respective work plans for 2011/2013. The outlines of

## Future IAPH Conferences / Meetings confirmed

### October 22-24, 2012

Americas Regional Meeting in conjunction with AAPA Annual Convention  
Mobile, Alabama, USA

### March 18-20, 2013

Asia/Oceania Regional Meeting/Port Forum  
Abu Dhabi, UAE

### May 6-10, 2013

The 28th IAPH World Ports Conference  
Los Angeles, USA

### April/May/June 2014 (dates to be confirmed)

The 8th IAPH Mid-term Ports Conference  
Sydney, Australia

### June 1-5, 2015

The 29th IAPH World Ports Conference  
Hamburg, Germany



the discussions at the committee meetings in Jerusalem are elaborated later in this report (page 18).

The World Ports Climate Initiative (WPCI) has formally set up a new project team 'LNG Fueled Vessels and Ports' chaired by Ms Tessa Major, Port of Antwerp. Its startup meeting took place in May.

#### **New IAPH Awards**

In addition to the current three awards, the Akiyama Award, Conference Open Award and IT Award, it was decided in Jerusalem to set up the following two new awards:

- Port Communication Award
- Port Environment Award

The preparation work had been successfully completed at the respective technical committees and an official announcement to call for entries was made in June 2012 (see page 7).

#### **Exco Members**

During this period, six persons have newly joined the IAPH Executive Committee (Exco):

- Atsushi Fujii, Yokohama Port Corporation, Japan
- Martin Byrne, Port Nelson Ltd, New Zealand
- Dov Frohlinger, Israel Ports Development and Assets Co Ltd, Israel
- Bisey Uirab, Namibian Ports Authority, Namibia
- Ashley Taylor, Point Lisas Industrial Port Development Corp Ltd, Trinidad and Tobago
- Jerry Austin Bridges, Virginia Port Authority, USA

#### **Statements of Accounts for 2011**

The financial net worth of the association was reduced from ¥389 million to ¥369 million as of the end of 2011, mainly due to the devaluation of the asset of bank bonds in Euro and Sterling Lb in terms of Japanese Yen, and a decrease in the revenue from membership dues. The details are elaborated later in this report along with the comments made by the Chair of IAPH Finance Committee, Mr. Garth Cowie of Port of Napier Ltd (see page 28).

#### **Future Conferences and Meetings**

It was decided that the next IAPH Mid-term Ports Conference would be hosted by the Sydney Ports Corporation in 2014. The dates of the World Ports Conference in Hamburg that will follow the Los Angeles Conference were fixed as June 1-5, 2015.





# Mid-term World Ports Conference

Firstly from the conference were a new vision and mission statement, a new technical committee on port finance and the inaugural Women's Forum

**A**ttended by over 200 delegates from 31 countries, the Mid-term Ports Conference and Board Meeting of the International Association of Ports and Harbors was held in Jerusalem, Israel, from May 21 to 24, hosted by Israel Ports Development and Assets Co Ltd. The event was significant in that IAPH adopted new IAPH vision and mission statements and their supporting objectives, redefining who we are and what we intend to do in the future within and beyond the organization.

## Port Forum Sessions

Professor Stanley Fischer, Governor of the Bank of Israel, delivered a keynote speech and updated the audience as to where we were in the recent past and where we are going in the future in terms of GDP, interest rate, inflation, government debt, growth rates, unemployment, etc, giving us a macroeconomic perspective.

Dr Theo Notteboom, University of Antwerp, kicked off the Port Forum by addressing the increasingly strategic role that ports are playing in the supply chain and drawing attention to their growing importance as information centres for the chain. He further mentioned that port authorities need to focus more on cost efficiency, flexibility, resilience, reliability and sustainability in changing business environments around them.

**Session 1** focused on ever-changing trends of shipping and transport industries and their impact on the port infrastructure and on the ways and means of how ports can deal and cope with these changing trends, i.e. "Ship/transport trends / impact on port infrastructure" and "Evolving role of the Port Authority". An interesting port experience, "Building strong community relationships: strategies for creating consensus & support" was presented on building strong and effective port community relationships involving local residents and businesses.

**Session 2** "Israel's Southern Gateway and Red-Med Landbridge initiative" presented an interesting project to develop the Port of Eilat as a land bridge connecting the Red Sea and Mediterranean by a proposed 200km rail extension to Eilat. "Sustainable port & logistics chain development" gave an overview of what the inland Port of Antwerp is doing for sustainable port operations, e.g. onshore power supply, carbon footprint, LNG bunkering for ships, etc. "Transition of the Port Authority from landlord to economic strategist" described how ports are changing from a traditional landlord to an economic strategist along the three strategic lines of port community, hinterland connectivity and trade development.

**Session 3** "Port concession trends" provided an analysis and assessment of current trends of port concessions, focusing on the credit crisis and its impact on port concessions and financing. "Intra-port competition" focused on national port policies to serve port users efficiently and effectively by promoting intra-port competition, increasing terminal productivity and introducing port structural ownership programmes by referring to lessons learnt from Greek port policy. "Innovative Dutch initiative to sustainable terminal design" presented 'the polder model' (low-lying reclaimed land protected by dikes) and its application to the design and construction of a container terminal.

**Session 4** "Results of Environmental Ship Index initiatives" provided the current status of ships and ports (incentive providers) registered for this scheme to identify and reward cleaner and greener ships, being a centrepiece of the IAPH's World Ports Climate Initiative (WPCI). "The grounding of the *Rena* - lessons learned from New Zealand's most serious maritime incident" provided a detailed visual presentation of the *MV Rena* grounding and break-up as well as the conduct of container recovery operations. "Greener dredging" presented the viewpoint of dredging companies, valuing environmental aspects of dredging and putting them into practice, emphasizing an early contractor involvement etc. "Climatic change impact on port development – Hamburg case study" presented a case study of the Port of Hamburg tackling the planning impacts of climate change on the port's construction and operations, especially those caused by rising water levels and sedimentation.

## Session 5 comprised four workshops held in parallel:

- Strategic Port Master Planning – concepts and methods of approaching Strategic Port Master Planning were explained with a view to creating a port's vision
- Port Economic Contributions to Local Economy – various socio-economic indicators were discussed to effectively measure ports' economic impact on the local economy
- Women in the Port Industry – an inaugural meeting of the IAPH Women's Forum was launched with the purpose of enhancing, advancing and empowering women in the port industry
- Security Technology – topics on seaport security, integrated gate automation etc were discussed.





## Decisions taken at the Board meeting

- 1** New vision and mission statements and the objectives to achieve the mission were adopted.
- 2** Resolutions adopted  
IAPH made its stance clear by adopting five resolutions on the following subjects (see also page 9).
  - Resolution on accelerating the ratification of International Conventions to preserve the marine environment and providing protection by a liability and compensation framework
  - Resolution on adopting a new IAPH Vision Statement, Mission Statement and Objectives to be attained by IAPH in order to achieve the Mission
  - Resolution on enhancing mutual understanding and co-operation with friendly organizations with whom IAPH has signed Memoranda of Understanding (MOUs)
  - Resolution on establishing the IAPH Women's Forum
  - Resolution expressing appreciation
- 3** The Board approved the establishment of a new IAPH technical committee on Port Finance and Economics (chair: Dov Frohlinger, Israel Ports Development and Assets Co Ltd).
- 4** The Board approved the signing of a Memorandum of Understanding for co-operation with the European Sea Ports Organisation (ESPO) and the signing ceremony took place after the Board meeting on May 22.
- 5** Sydney, Australia, was determined as the venue of Mid-term Ports Conference/Board Meeting 2014, to be hosted by Sydney Ports Corporation.
- 6** Dates of 29th IAPH World Ports Conference 2015 in Hamburg, Germany were fixed as June 1-5, 2015.
- 7** On the initiative of Long Range Planning and Review Committee, an internal committee of IAPH tasked to review and monitor issues of critical importance to the association and the first meeting of an IAPH Women's Forum was launched in Jerusalem.

## IAPH Awards 2013

For sharing best practices and experiences, IAPH recognises and honours excellence in port management and operations through its biennial award programme.

- Akiyama Award
- Los Angeles Open Award

- Port Communications Award
- Port Environment Award
- Information Technology Award

Only IAPH members are eligible for the programme and the deadline for entry is 30 November 2012. For full details, please visit our website at: <http://www.iaphworldports.org/awards2013.aspx>



# Working Sessions programme: May 22-23, 2012

Keynote Speech Professor Stanley Fischer, Governor of the Bank of Israel

## Opener

- **Global economic and trade trends: game changer for ports?** Dr Theo Notteboom, ITTM, University of Antwerp

## Session 1

- **Ship and transport trends; impact on port infrastructure**  
Ben Hackett, Hackett Associates
- **Building strong community relationships; strategies for creating consensus & support**  
Arley M. Baker, Senior Director, Port of Los Angeles
- **Evolving role of the Port Authority**  
Patrick Verhoeven, Director-General, European Seaports Organisation

## Session 2

- **Israel's Red-Med Landbridge initiative**  
Dr Yechiel Leiter, Chairman (Designate), Israel Ports Company
- **Sustainable port & logistics chain development**  
Kris De Craene, Manager, Spatial Management & Environment, Port of Antwerp
- **Transition of the Port Authority from landlord to economic strategist**  
Kieran Ring, CEO, Global Institute of Logistics

## Session 3

- **Port concession trends**  
Wout Korving, Managing Director, Rebel Group
- **Intra-port competition**  
Prof Thanos Pallis, General Secretary of Ports, Ministry, Development, Competitiveness & Shipping, Greece
- **Innovative "Dutch" initiative to sustainable terminal design**  
Eric Smit, Director, Maritime Practice, Royal Haskoning
- **Financing port infrastructure**  
Wout Korving, Managing Director, Rebel Group

## Session 4

- **Results of Environmental Ship Index initiatives**  
Fer van der Laar, Managing Director, IAPH-Europe
- **The grounding of the *Rena* - lessons learned from New Zealand's most serious maritime incident**  
Martin Byrne, Chief Executive, Port Nelson Limited, New Zealand
- **Greener dredging**  
Rene Kolman, Secretary General, International Association of Dredging Companies
- **Climatic change impact on port development – Hamburg case study**  
Prof Dr-Ing Nicole von Lieberman, Hamburg Port Authority

## Session 5: Workshops in parallel

- **Strategic port master planning**  
Eric Smit, Director Maritime Practice, Royal Haskoning  
Richard Sinkoff, Port of Oakland
- **Port economic contributions to local economy**  
Dr Michael Doods, Asst. Professor, Solvay Business School, University of Brussels
- **Women in the port industry**  
Session Coordinator: Dr Geraldine Knatz, Port of Los Angeles / Naomi Kogon-Steinberg, Steinberg & Associates
- **Security technology**

**Integrated marine port security concept:**  
Gur Cohen, Elbit Security Systems Integrated

**Gate automation solutions:**  
Shai Rosenbalt, AFCON

**Case study on anti-piracy measures:**  
Ron Shafran, ISDS

**Modern approach to seaport security design:**  
Joseph Gordon, Gordon Engineering



# Resolution on

## Accelerating the Ratification of International Conventions to preserve Marine Environment and Providing Protection by a Liability and Compensation Framework

**Adopted on May 22, 2012 by the IAPH Board of Directors at IAPH Mid-term Ports Conference/ Board Meeting, Jerusalem, Israel**

Being aware that the International Maritime Organization (IMO) adopted BWM Convention<sup>i</sup> in 2004 aiming to prevent the transfer of aquatic invasive species contained in ships' ballast water,

Being further aware that while the BWM Convention is not in effect yet<sup>ii</sup>, its code (Regulation D-2) stipulates to install ballast water treatment system for some specific type of ships<sup>iii</sup> on and after January 1, 2012 upon the Convention being into effect,

Recognising that by August 2011 IMO has already granted 34 basic approvals and 20 final approvals to ballast water management systems which satisfied severe criterions of biological results,

Noting that some individual States intend to implement their own code of ballast water management, setting different

standards or conditions from the BWM Convention of the IMO, which would cause disruptive situation in the maritime industry and force ships to prepare various systems complying with each individual state code,

Being aware that other International Conventions critically essential to marine and coastal environment such as Ship Recycling Convention<sup>iv</sup> and 2010 HNS Convention<sup>v</sup> are also still undergoing a slow ratification process,

Reminding that IAPH adopted a resolution on accelerating the ratification of international conventions including the HNS convention in Dunkirk in April 2008, wishing these conventions to make an essential contribution to the preservation of marine environment and provide protection by a liability and compensation framework,

NOW, THEREFORE, the Board of Directors at its Regular Meeting in Jerusalem, Israel on May 22, 2012 resolves that:

- 1** IAPH is concerned that invasive species transported by ballast water can cause significant biological damage to marine environment.
- 2** IAPH urges States to ratify IMO's BWM Convention, expecting the Convention to be in effect as international unified code rather than various different standards established by individual States.
- 3** IAPH also suggests States to recognize the current situation of developments of BWM systems approved by IMO for practical use.
- 4** IAPH also suggests its members urge their States to ratify the BWM Convention, Ship Recycling Convention and 2010 HNS Convention.

- <sup>i</sup> "The International Convention for the Control and Management of Ships' Ballast Water and Sediments"
- <sup>ii</sup> While the BWM Convention requires ratification of 30 States and their representing 35% of world merchant shipping tonnage, current ratification shows 33 States and their representing 26.46% of world shipping tonnage as of March 31, 2012.
- <sup>iii</sup> Ships built on and after 2009 with its ballast tank capacity less than 5000m<sup>3</sup> and ships newly built on and after January 1, 2012 with ballast tank capacity 5000m<sup>3</sup> and over.
- <sup>iv</sup> "The Hong Kong International Convention for the Safe and Environmentally Sound Recycling of Ships"
- <sup>v</sup> "The International Convention on Liability and Compensation for Damage in connection with the Carriage of Hazardous and Noxious Substances by Sea, 2010"



# Resolution on

## Enhancing Mutual Understanding and Co-operation with Friendly Organizations with whom IAPH Has Signed Memoranda of Understanding (MOUs)

**Adopted on May 22, 2012 by the IAPH Board of Directors at IAPH Mid-term Ports Conference/ Board Meeting, Jerusalem, Israel**

WHEREAS, IAPH has signed Memoranda of Understanding for co-operation with friendly organizations sharing common interests and purposes as follows:

- The World Association for Waterborne Transport Infrastructure (PIANC) based in Brussels, Belgium (2001)
- American Association of Port Authorities (AAPA) based in Alexandria, VA, USA (2004)
- Organization of American States, Inter-American Committee on Ports (OAS-CIP) based in Washington, DC, USA (2005); and

WHEREAS, these MoUs provide the basis for mutual understanding and co-operation between the parties in defining expectations, terms and conditions for bilateral working relationships and have provided a framework to pursue co-operative projects of mutual interest, such as:

- 1 Forming a joint working group on "Small Islands" with PIANC in 2004 to address issues faced by small island

ports, that culminated in publishing a booklet entitled "Small Island" in 2008.

- 2 Conducting in 2009 jointly with AAPA and Stanford University a survey entitled "Impacts of Climate Change on Seaports", to determine the level of knowledge and preparedness of IAPH member ports towards natural disaster. The final report was published in 2010; and

WHEREAS, the above-mentioned specific cases of joint co-operative programmes indicate and reinforce the tangible value of continued co-operation between IAPH and the organizations with whom those MoUs were entered into; and

WHEREAS, IAPH intends to enter into another Memorandum of Understanding with the European Sea Ports Organisation (ESPO) at this Mid-Term Conference in Jerusalem; and

WHEREAS, IAPH would like to recognise the American Association of Port Authorities (AAPA) and the fact that AAPA is celebrating its centennial this year;

NOW, THEREFORE, the Board of Directors at its Regular Meeting in Jerusalem, Israel on May 22, 2012 resolves that:

- 1 It supports the Memoranda of Understanding (MOUs) that IAPH has entered into with other maritime organizations to bring the maritime community closer and endorses them as the collective voice of the global port industry to be heard at international forums in furtherance of promoting, enhancing and protecting the interests of the industry as a whole.
- 2 IAPH will enter into a Memorandum of Understanding with the European Sea Ports Organisation (ESPO) based in Brussels, Belgium, at the close of this session, to strengthen the co-operation between the two organizations, and explore further areas of mutually beneficial joint programmes; and
- 3 IAPH recognises the American Association of Port Authorities (AAPA) for marking its 100th anniversary and for having served the ports of the American continent during the past century. IAPH expresses its wish to AAPA to continue fulfilling its vision of "Delivering Prosperity".



# Resolution on

## Adopting a New IAPH Vision Statement, Mission Statement and Objectives to be Attained by IAPH in Order to Achieve the Mission

**Adopted on May 22, 2012 by the IAPH Board of Directors at IAPH Mid-term Ports Conference/ Board Meeting, Jerusalem, Israel**

WHEREAS, IAPH strives to become the world's leading international maritime organization that will bring ports around the world together to collaborate and strengthen relationships; and

WHEREAS, IAPH represents member ports at international organizations, such as the UN organizations and others; and

WHEREAS, IAPH strives to represent more ports around the world at international organizations and forums; and

WHEREAS, there is consensus among the officers of the organization that the original vision and mission of IAPH no

longer represents current realities with which the maritime industry is faced in the 21st century; and

WHEREAS, the IAPH Long Range Planning & Review Committee has recommended that a new Vision and Mission Statements be adopted as it strives to be the world's leading maritime organization; and

WHEREAS, the Long Range Planning & Review Committee, at its meeting in Jerusalem on May 21, 2012, has voted to adopt the new Vision Statement, the new Mission Statement and the Objectives and to recommend that the Board adopt them as well;

NOW, THEREFORE, the Board of Directors at its Regular Meeting in Jerusalem, Israel on May 22, 2012 resolves that:

- 1** The New IAPH VISION Statement will be:  
The Global Ports' Forum For Industry Collaboration and Excellence.
- 2** The New IAPH MISSION Statement will be:  
Promoting the interest of ports worldwide through strong member relationships, collaboration and information-sharing that help resolve common issues, advance sustainable practices and continually improve how ports serve the maritime industries.
- 3** The Objectives to be Attained by IAPH In Order to Achieve the Mission will be:
  - Strengthen relationships among the member ports by facilitating interaction, dialogue, problem-solving and formulation of best practices.
  - Leverage member expertise through strong technical committees and programs that create platforms focused on resolving complex port and maritime industry concerns and building greater efficiency and sustainability for ports worldwide
  - Promote and demonstrate IAPH members' leadership and commitment to a cleaner, safer and more environmentally sustainable industry for the benefit of the global community
  - Proactively co-ordinate with other international maritime and related organizations (such as IMO, UNCTAD, WCO, PIANC, etc.) and advocate for global solutions to issues that impact IAPH members.





# Resolution on

## Establishing the IAPH Women's Forum

**Adopted on May 22, 2012 by the IAPH Board of Directors at IAPH Mid-term Ports Conference/ Board Meeting, Jerusalem, Israel**

WHEREAS, the IAPH Long Range Planning & Review committee has voted on and recommended that IAPH establish a Women's Forum for the advancement and empowerment of women in the maritime industry; and

WHEREAS, a group of members of the Long Range Planning & Review Committee has already begun to reach out to

various maritime and other organizations, including some UN organizations, in efforts to co-operate and collaborate with these organizations in the areas of advancement and empowerment of women; and

WHEREAS, among the goals of IAPH is to create an annual scholarship intended for the training of women in ports;

NOW, THEREFORE, the Board of Directors at its Regular Meeting in Jerusalem, Israel on May 22, 2012 resolves that:

- 1** IAPH will establish a Women's Forum that will aspire to advance and empower women in the maritime industry.
- 2** It supports the Women's Forum and authorizes it to create a platform for discussing women's issues in the maritime industry, ways to encourage women to join the industry and to promote training programs enabling women to better compete for positions at all levels, including those previously not open to women.
- 3** It authorizes the Women's Forum to develop policies and recommendations on equality, advancement and empowerment of women in the industry.
- 4** It reaffirms that the Women's Forum, with the support of IAPH, will reach out and collaborate with ports around the world, UN organizations, other maritime entities, other women's professional organizations and other organizations that engage in the advancement and empowerment of women, to implement these policies and recommendations;
- 5** It reaffirms that IAPH will establish a permanent annual scholarship to be granted to a female member of IAPH for training purposes.





# Resolution

## Expressing Appreciation

**Adopted on May 22, 2012 by the IAPH Board of Directors at IAPH Mid-term Ports Conference/  
Board Meeting, Jerusalem, Israel**

WHEREAS, the Mid-term Conference and Board Meeting of the International Association of Ports and Harbors convened at the Inbal Hotel, Jerusalem, Israel, May 21-24 2012, has been in all respects successful due to the wonderful organization and execution of the business and social programs.

NOW THEREFORE BE IT RESOLVED that on this Twenty-Second Day of May on the occasion of the Mid-term Conference and Board Meeting of the International Association of Ports and Harbors, the Board of Directors assembled in Jerusalem, Israel, hereby does extend its gratitude to the following::

**Mr Yisrael Katz, MK**

Minister of Transport, National Infrastructures and Road Safety

**Dr Yechiel Leiter**

Chairman (Designate)

Israel Ports Development and Assets Company Ltd

**Mr Shlomo Breiman**

Chief Executive Officer

Israel Ports Development and Assets Company Ltd

**Mr Dov Frohlinger**

Chief Operating Officer

Israel Ports Development and Assets Company Ltd

AND BE IT FURTHER RESOLVED that our thanks also go to the Chairmen and Speakers of the entire conference; to the Sponsors, to Ortra Ltd; to other generous sponsors; to the media for their respective support and contribution to the success of the Conference, and

Also those in various capacities, including spouses, partners and accompanying persons for their participation in the Mid-term Ports Conference and Board Meeting of this Association.



# Asia/Oceania in Sri Lanka

The first regional meeting to be held on the Indian Ocean island gave members a chance to see first-hand its investment in supply-chain infrastructure

The 12th IAPH Asia/Oceania Regional Meeting and Port Forum was held at Bandaranaike Memorial International Conference Hall in Colombo, Sri Lanka from March 8 to 9, 2012, hosted by Sri Lanka Ports Authority. Attended by nearly 50 IAPH members from 18 countries, it was the first IAPH event ever held in Sri Lanka. Several hundred local delegates were believed to have attended the Sri Lanka International Air Freight, Shipping and Logistics Expo, the country's first-ever international expo that was held in tandem with the IAPH event.

The two-day event was officially opened by Dr. Sarath Amunugama, Senior Minister of International Monetary Co-operation, giving the keynote speech on behalf of His Excellency President Mahinda Rajapaksa, promoting Sri Lanka as an excellent investment centre as well as a key logistics centre in the Indian Ocean. Three port forum sessions were organized under the overall theme of "Global challenges -impact on Asia/Oceania Region".

**Port Forum Session 1 "Economic Slowdown & Global Trade Impact to Asia/Oceania Region"** looked into opportunities and challenges in the aftermath of global economic recession. The governor of the Central Bank of Sri Lanka spoke of the country's favourable strategic location connecting East and West, a substantial investment in infrastructure to promote its hub status by air and sea, and the promising trade and economic environments surrounding the country. An assessment of the recent economic slowdown and its impact in Asia was presented, as well as a case study of Oman's ports,

discussing the impact of the global recession on the region's trade and ports in Oman.

## **Session 2 "Capacity Building & New Port Development in Asia/Oceania Region: Challenges and Opportunities"**

provided a country case study in terms of broader national port development. Sri Lanka's ports were presented as a good trade generator, offering greater investment opportunities for anyone seeking a safe and attractive place to invest in. Presented next was an overview of Australian ports in terms of capacity building and new port developments. Finally, a number of specific issues facing New Zealand port companies in the context of the NZ Port Companies Act and the NZ Productivity Commission Review were presented.

## **Session 3 "Security Challenges to Port & Shipping - Port Safety / Security & Environment / Maritime Security / Piracy / Terrorism"**

offered shipping perspectives to the audience. A representative of the Nautical Institute presented a seafarer's perspective on port issues in his presentation "Ports and Harbors – A view from the sea". A representative of shipping line APL discussed the hot topic of sustainable shipping and described his company's efforts to reduce ship emissions as well as using onshore power supply. Finally, a consultant wrapped up the session by evaluating the methods around effective measurement within the green supply chain, providing insights into the methods of measuring performance leading to improved corporate performance, cost savings as well as client enhancement strategies.

## **Major points of discussion and decisions made at the regional meeting**

### ■ **Election of 3rd Vice President**

The meeting confirmed a tentative schedule to elect a new 3rd Vice President for the term of 2013/2015 from among the region's Regular Members to succeed Mr Grant Gilfillan, now the 1st IAPH Vice President, who will become IAPH President at the Los Angeles Conference in May 2013.

### ■ **Vacancies in the Executive Committee (Exco)**

The meeting was informed that there are now two vacancies in the Exco caused by Mrs Nasreen Haque leaving Karachi Port, Pakistan in late 2011, and Mr Manjit Singh leaving MPA, Singapore in early 2012 and that the process to elect their successors be initiated in due course.

### ■ **Venue of future IAPH events in the Asia/Oceania Region**

The meeting acknowledged that three IAPH events are tentatively scheduled to take place in the region:

- Asia/Oceania Regional Meeting in 2013 (Abu Dhabi, UAE)
- IAPH Mid-term Ports Conference/Board Meeting in 2014 (Sydney, Australia)
- Asia/Oceania Regional Meeting in 2014 (Yeosu/Gwangyang, Korea)



## Port Forum programme: March 8, 2012 (Moderator: Mark Millar)

### Session 1 Economic Slowdown and Global Trade Impact to Asia/ Oceania Region

- Opportunities for regional trade amidst current global challenges  
**Ajith Nivard Cabraal**, Governor, Central Bank of Sri Lanka
- Economic slowdown and impact on Asia  
**Michael Proffitt**, Independent Strategic Advisor, Dubai Logistic City
- Economic slowdown and global trade impact on the port sector  
**Iain Rawlinson**, Commercial Manager, Port of Salalah

### Session 2 Capacity Building & New Port Development in Asia Oceania Region: Challenges and Opportunities

- Opportunities & challenges for port development in Sri Lanka  
**Priyath B Wickrama**, Chairman, Sri Lanka Ports Authority

- Capacity building and new port developments in the Oceania region and issues facing New Zealand port companies  
**Martin Byrne**, Chief Executive, Port Nelson Limited, New Zealand
- Port infrastructure development & planning  
**Dr Jonathan Beard**, Managing Director, GHK Management Consultants

### Session 3 Security Challenges to Port & Shipping Port Safety / Security & Environment/ Maritime Security / Piracy /Terrorism

- Ports and Harbors - a view from the sea  
**Sivaraman Krishnamurthi**, Senior Vice President, Nautical Institute
- APL's Green Shipping initiatives  
**Goh Teik Poh**, President, South Asia Region, APL
- The Sustainability Challenge - effectively measuring environmental performance to positively differentiate supply chain performance and reduce costs  
**Tony Wines**, Founder & Director, Turnkey Group



Photo: SLPA





# Americas

## Regional Meeting

Photo: Port of LA

Attended by more than 20 IAPH members, a meeting of the IAPH Americas Region was held on September 13, 2011 in Seattle, Washington, USA, in conjunction with the 100th American Association of Port Authorities Convention. This event was hosted by the Port of Seattle, which also celebrated its bicentennial year.

The meeting, chaired by Bill Johnson, 3rd Vice President of IAPH, discussed a number of key issues including IAPH's efforts to utilize social media to raise awareness of IAPH, the latest IMO

initiatives on controlling air and sea environments such as the Energy Efficiency Design Index (EEDI), Ship Energy Efficiency Management Plan (SEEMP), Ballast Water Convention and others. President Geraldine Knatz also highlighted that the IAPH's international coverage and perspectives would help to expand membership in the Americas Region.

The IAPH Officers were invited to the AAPA Board Meeting, where they shared information of interest to both organizations and discussed further co-operation in future.

# Africa/Europe

## Regional Meeting

The IAPH Africa/Europe Regional Meeting was successfully held in Antwerp, Belgium from December 7 to 8, 2011, hosted by the Port of Antwerp. Attended by some 50 participants, the Port Forum (see programme opposite) discussed a number of stimulating issues such sustainability of ports in the global supply chain, air environment control in ports and port reception facilities for ship-generated waste and cargo residues.

A meeting of the Long Range Planning and Review Committee was also held in Antwerp, where a number of important issues

were addressed including the following:

- use of various social networks to promote IAPH
- construction of a database in key areas
- development of an IAPH presentation template
- measures to further activate IAPH technical committees
- creation of an IAPH Women's Forum and a Technical Committee on Port Finance and Economics
- new IAPH Vision and Mission Statements.

Photo: IAPH





# Port Forum

## Programme

### Antwerp, December 7 & 8, 2011

**Session 1: World ports climate initiative**

(Moderator: **Kris De Craene**, manager environment, Antwerp Port Authority)

- **Carbon footprint / Environmental Shipping index (ESI)/ Sustainable lease agreements**  
**Christopher Patton**, assistant director of environmental management, Port of Los Angeles
- **Energy efficiency operational indicator (EEOI)**  
**Bruce Anderson**, environmental engineer, Star Crest Consulting
- **Energy efficiency design index (EEDI)**  
**Galen Hon**, senior researcher, Marine Program Lead, International Council on Clean Transportation
- **Panel discussion: "Defining the way forward"**  
**Alisdair Pettigrew**, communication advisor, Carbon War Room
- **Low emission yard equipment**  
**Stefan Johansson**, chairman environmental committee, Port Equipment Manufacturers Association (PEMA)

**Session 2: Sustainable ports in the global supply chain**

- Strategic reflections

(Moderator: **Theo Notteboom**, president, ITMMA - University of Antwerp)

- **Evolution in shipping**  
**Chris Coeck**, Manager Policy and Strategic Projects, Antwerp Port Authority
- **Changing dynamics in shipping & logistics: the stage, the players, the game**  
**Theo Notteboom**, president, ITMMA - University of Antwerp

**Session 3: Sustainable ports in the global supply chain -**

Operational reflections

(Moderator: **Jan Blomme**, head strategy & development, Antwerp Port Authority)

- **Antwerp Port Community system (APCS) & developing EU standards for electronic communication**  
**Frank Knoors**, managing director, Logit Systems BVBA

- **Development of a general barge stowage plan for inland navigation in the EU**  
**Marc Stefanoff**, manager CBPA Barge Planning, PSA Antwerp

- **How ports may be an optimal link in global supply chains**  
**Jan Blomme**, head of strategy & development, Antwerp Port Authority

- **Intermodal transport**  
**Dertje Meijer**, CEO, Port of Amsterdam

**Session 4: Port reception facilities for ship - generated waste and cargo residues**

(Moderator: **Peter Van den Dries**, technical environmental manager, Antwerp Port Authority)

- **Brief introduction / General legal framework (IMO and EU)**  
**Peter Van den Dries**, technical environmental manager, Antwerp Port Authority
- **Availability and use of port reception facilities in Africa**  
**Harry Barnes Dabban**, executive co-ordinator, Ports Environmental Network - Africa (PENaf)
- **A Nigerian example**  
**Olumide Omotoso**, Nigerian Port Authority
- **The Antwerp system on ship - generated waste**  
**Patrick Verhaert**, manager port dues, Antwerp Port Authority.



# In-depth debate of issues

The all-important IAPH Technical Committees met in Jerusalem for an update on work progress

The Technical Committees, regarded as the backbone of IAPH, are tasked to study a range of common-interest issues and concerns to the world ports community. They are also assigned to prepare or propose IAPH position papers and resolutions on critical issues in maritime fields for submission to international agencies, including IMO, to advocate the principles of IAPH.

In Jerusalem, May 2012, seven technical committees in three groups discussed their progress so far since their work plans for this term were established in Busan in May 2011. The interim outcomes of their efforts and several final technical reports are

contained in the minutes of each committee meeting. Please access each "committee room" on the IAPH website at [www.iaphworldports.org](http://www.iaphworldports.org)

The new committee Port Finance and Economics Committee was officially launched at the Board Meeting in Jerusalem designating Mr Dov Frohlinger of Israel Ports Development and Assets Co Ltd as its Chair.

Technical committees also examined four IAPH Resolutions to be submitted for adoption at Board Meeting in Jerusalem (see page 9).

## 1 Group for Communications & Training (Group I)



### 1.1 Communication and Community Relations Committee

Chaired by Monica Bonvalet, Grand Port Maritime de Marseille, France

#### Mission:

- 1 Provide a training programme for developing ports.
- 2 Review and improve internal and external communications of the Association.
- 3 Build a knowledge base for members on how to deal with community relations.

## Issues discussed at Jerusalem committee meeting:

- **The themes of IAPH Los Angeles Conference Awards 2013**  
Adding to the existing IAPH Essay Contests "Akiyama Award" and "LA Open Award", the themes of newly established "IAPH Port Communications Award" were proposed.
- **IAPH Training Scholarship**  
Measures for encouraging member ports in developing countries to take part in the programme were discussed
- **New IAPH Logo and Template for Power-Point Presentation**  
New template for IAPH members' power-point presentation and candidates for a new IAPH logo were presented
- **Improvement of IAPH Communication**  
Various measures for better IAPH communication using advanced IT were proposed

**1.2 Port Finance & Economics Committee (Newly launched)**

Chaired by Dov Frohlinger, Israel Ports Development and Assets Co Ltd, Israel

**Mission:**

- 1 Monitor, collect, analyze and disseminate information relative to port accounting principles, budgeting, project financing, financial instruments/lending, economic feasibility studies, port economic contributions studies, tariff and other issues related to the port finances and economics.

**2.2 Port Environment Committee**

Chaired by David Padman, Port Klang Authority, Malaysia

**Mission:**

- 1 Monitor trends in environmental areas that affect ports including, but not limited to, air quality, dredging/dredged material disposal, soil remediation, ballast water, habitats, ship wastes and reception facilities.
- 2 Provide information on port environmental matters to the Association concerning positions put forth on behalf of IAPH at international organizations such as IMO, IALA, UNCTAD, ILO, etc.
- 3 Develop a Green Port Programme and develop a framework.
- 4 Co-ordinate with PIANC Environmental Commission by active participation of IAPH members on PIANC working groups, consistent with the IAPH-PIANC joint agreement.
- 5 Maintain a close liaison with other environmental and dredging organizations such as AAPA, CEDA, WODA, USACE, IADC and others.
- 6 Oversee activities of the WPCI.

**2 Group for Port Safety, Security & Environment (Group II)****2.1 Port Safety & Security Committee**

Chaired by Shane Hobday, Sydney Ports Corporation, Australia

**Mission:**

- 1 Collect, interpret and summarise for the Association the latest relevant information concerning port safety and security requirements, initiatives and best practices.
- 2 Provide analysis and draft positions on port safety and security matters to be placed on the agenda of international organizations such as IMO, ILO, ISO, WCO, IALA, etc.

**Issues discussed at Jerusalem committee meeting:**

- **Overweight or Incorrectly Declared Container Issue:** IAPH survey results<sup>1</sup> on this issue were reported in the meeting together with case example of member port to address risks arising from this issue. Possible amendments of IMO SOLAS Rules were also discussed in the meeting
- Current situation of Acts of Piracy
- IMO Requirements for Newly Built Tankers carrying Low-Flashpoint Cargo
- Recent Accidents involving Reefer Containers

<sup>1</sup>"Report of IAPH Survey Results on Overweight or Incorrectly Declared Container Issues in Ports" The report was released in May 2012 providing critical information for port related parties to grasp the current situation of measures taken by world ports and terminals to address the overweight containers issues. Full report can be accessed through: <http://www.iaphworldports.org/Library.aspx>

**Issues discussed at Jerusalem committee meeting:**

- **Updating World Ports Climate Initiative (WPCI)** Developments of each WPCI project were reported, such as ports newly joining the Environmental Ship Index programme (see p22 for details of WPCI projects)
- **Ballast Water Convention** Possible impacts on ports of the convention were presented focusing on ports' role and anticipated action. An IAPH draft resolution concerning international conventions to preserve the marine environment was also examined (see page 9)
- **Port Reception Facilities** ISO developments for standardization of ship waste management were reported, together with relevant e-Service on Ship Waste Management
- **IAPH Environment Award (newly established LA Conference Awards 2013)** The themes of this award were discussed and determined
- **Co-operative Work with PIANC** The project "Introduction to a Practical Guide for a Sustainable Seaport" was presented





### 2.3 Legal Committee

Chaired by Frans van Zoelen, Port of Rotterdam Authority, the Netherlands

#### Mission:

- 1 Initiate, follow up, study and recommend proposed action to be taken on behalf of IAPH concerning any issues in which the collective interests of port authorities are brought into question from the legal point of view.
- 2 Follow and if necessary intervene in international arenas which produce legal instruments relevant for IAPH, especially the IMO Legal Committee.
- 3 Assist other technical committees of IAPH with respect to relevant legal matters and to international legal instruments promoted by international organizations.

#### Issues discussed at Jerusalem committee meeting:

- Major developments at IMO Legal Committee (such as HNS Protocol 2010 and LLMC 96)
- New chapter for IAPH's Legal Guidebook, "Introduction to Maritime Law for Port Officials", featuring Places of Refuge, Particular Sensitive Sea Areas and other port-related legal issues
- Possible amendment of SOLAS Rule relevant to "Overweight or Incorrectly Declared Container Issues"

### 3. Group for Port Development, Operations & Facilitation (Group III)



### 3.1 Port Planning & Development Committee

Chaired by Wolfgang Hurtienne, Hamburg Port Authority, Germany

#### Mission:

- 1 Monitor, collect, analyze and disseminate information pertaining to development, planning, design, construction and maintenance of port and harbor facilities.

#### Issues discussed at Jerusalem committee meeting:

- **Demand and requirements of port infrastructure for the offshore wind industry**  
An overview of the offshore wind industry and analysis of demands and requirements of specialized port infrastructure for the industry
- Effects on the navigability of the Northern Sea Route (NSR) and the Northwest Passage (NWP) from climate change/ Analysis of Arctic Sea Routes (NSR & NWP) focusing on their cost comparison to existing sea routes

The above projects will be completed and reported on at the LA World Ports Conference in May 2013.

The report on reconstruction efforts from the tsunami disaster in Japan was also presented at the Jerusalem meeting.



### 3.2 Port Operations & Logistics Committee

Chaired by Yoseph Bassan, Ashdod Port Company Ltd, Israel

#### Mission:

- 1 Monitor, collect, analyse and disseminate information and elaborate recommendations pertaining to the improvement of port services, port operations, port and terminal management considering the port as an inter-modal link and crucial node of the logistics chain.

#### Issues discussed at Jerusalem committee meeting:

- Improving port efficiency and competitiveness by using a balanced scorecard
- Port privatization and the cruise industry
- Ship-to-shore crane development in light of vessel size trend and transport schemes
- Terminal automation technology
- Text messaging in operations management
- Motorways of the sea; European shortsea shipping developments
- Methods to improve productivity of terminal operations



### 3.3 Trade Facilitation & Port Community System Committee

Chaired by Frédéric Dagnet, Grand Port Maritime de Marseille, France

#### Mission:

- 1 Provide information concerning the latest developments in technology and the implications to ports for information processing and flows which are required to facilitate the movement of cargo and ships.
- 2 Monitor developments at international organizations which might affect trade facilitation of the ports industry and provide information concerning positions to be taken by the Association.

#### Issues discussed at Jerusalem committee meeting:

- Developments on trade facilitation and PCS made at international organizations such as WCO, UN/CEFACT
- Second-phase survey of PCS benchmarking project and case example of PCS implementation in members ports
- Consideration of MOU with European Port Community Systems Association (EPCSA)
- 2013 IT Award







# Update on the green ports story so far

## An overview of the past year's WPCI activities

The World Ports Climate Initiative launched its fight for the reduction of greenhouse gases (GHGs) in November 2008. Four projects (left page) are already finalized or in the process of implementation and the remaining four projects (right page) are in progress. For details of all the WPCI projects, go to: <http://wpci.iaphworldports.org>



## WPCI projects finalized and/or launched

### ■ IAPH Air Quality & Greenhouse Gas Tool Box

The web-based IAPH Tool Box for Clean Air Programs, which provides valuable information to reduce air pollution in port

areas, was expanded to include GHG mitigation measures, responding to increased concerns about the effects of global climate change among the world port community.

For access to the Tool Box, go to: <http://wpci.iaphworldports.org/iaphtoolbox/index.html>

### ■ Guidance Document of Carbon Footprinting (CFP) for Ports

The WPCI Carbon Footprinting Work Group, led by the Port of Los Angeles, released a Guidance Document as a reference for ports intending to develop or improve their GHG emissions inventories. For access to the guidance document, go to:

<http://wpci.iaphworldports.org/carbon-footprinting/index.html>

"Scope 1 & 2 CO<sub>2</sub> Calculator" was also presented at the committee meeting in Busan, May 2011. The calculator enables ports to estimate not only the current volume of their GHG emissions but also possible reduction of carbon emissions by using alternative energy resources. For access to the document, go to: <http://www.iaphworldports.org/LinkClick.aspx?fileticket=k2ZQ1D2vHqI%3d&tabid=4865>

### ■ Onshore Power Supply (OPS)

The OPS Working Group led by Port of Gothenburg launched a website in 2010 as a guidance tool for world's ports in planning to implement OPS to reduce the emission of pollutants and GHGs in their ports. To access the website, go to:

<http://wpci.iaphworldports.org/onshore-power-supply/index.html>

### ■ Environmental Ship Index (ESI)

The ESI Project Team established a scheme to reduce ship emissions of pollutants and GHGs using a universal

Environmental Index to measure a ship's emission performance.

Participating ports take the role of incentive-providers for ships with good ESI scores. ESI started its programme in January 2011 after setting up its website in November 2010. More than 730 ships with valid scores and 16 ports, including the recently joined Port of Los Angeles and Ashdod Port, have taken part in the programme as of July 2012. To access the website, go to:

<http://esi.wpci.nl>





## WPCI projects in progress

### ■ LNG-Fuelled Vessels

The LNG-Fuelled Vessels project was newly added to WPCI in May 2011 to promote the use of LNG as ship fuel due to its low emissions of polluted gases, particulates and GHGs. The project team, led by Tessa Major of the Port of Antwerp, will prepare guidelines for safety procedures and facilities development for supply of LNG fuels to ships at ports. For access to presentation, go to: <http://www.iaphworldports.org/LinkClick.aspx?fileticket=IVbhmSf55Nk%3d&tabid=4865>

### ■ Cargo Handling Equipment

To reduce emissions of pollutants air and GHGs from cargo handling equipment in port areas, the project team will collect best practices in advanced ports that have introduced low-emission and high-efficiency equipment for cargo handling. For access to presentation, go to: <http://wpci.iaphworldports.org/project-in-progress/cargo-handling-equipment.html>

### ■ Lease Agreement Template

Lease Agreement Template includes a sustainable approach in lease contracts for ports' tenants with the requirements related to control measures to reduce air pollution and GHGs from tenants' facilities. The project team will prepare model templates of lease contracts for ports' tenants.

### ■ Inter-Modal Transport

Inter-Modal Transport using multi-modal transportation is regarded as the most efficient way to carry cargoes, reducing transport costs and air emissions including GHGs. The project team, led by the Port of Amsterdam, will collect and summarize best practices of modal shift with relevant strategies introduced in world's ports. To access the recent presentation in Jerusalem, go to: [http://www.iaphworldports.org/LinkClick.aspx?fileticket=\\_AJNR\\_vHMsK%3d&tabid=5034](http://www.iaphworldports.org/LinkClick.aspx?fileticket=_AJNR_vHMsK%3d&tabid=5034)





# Promoting IAPH

From *Ports and Harbors* magazine to Facebook, the association uses a number of promotional tools to reach its members and the wider ports and shipping industries



## **Ports and Harbors Magazine**

IAPH publishes an official journal, *Ports & Harbors*, issued six times a year, with editorial input from IHS Fairplay. *Ports & Harbors* is a medium not only for IAPH members but also for port professionals to exchange views and opinions, obtain useful information and share best practices concerning the wide-ranging issues facing ports and the maritime industry. Comments on the magazine or submission of articles (or materials or stories) are always welcome at [ph@iaphworldports.org](mailto:ph@iaphworldports.org)

## **IAPH Website**

Revamped in March 2011 for the first time in five years with a new design and format, the official IAPH website continues to offer the latest news and information on the IAPH and its activities including its journal *Ports & Harbors*, conference proceedings and others in a digital book format (Cubook). The digital book is equipped with the following user-friendly functions.

- Thumb-nail viewer that enables you to see the layout of many pages at once
- Bookmarks taking you to a specific page of interest
- Search engine enabling keyword search of all digital books on the site

As before, IAPH members can access any page or document on the website with their user name and password. A statistical section was fully updated, presenting the most recent data on the world container traffic, including port and country rankings, and on the world seaborne trade by country and cargo.

## **Press Releases**

To make its position clear on issues of interest and concern to the membership and to promote its activities as widely as possible, IAPH issued seven press releases in the period July 2011 to July 2012.

- "Member Ports of the IAPH Welcome the International Maritime Organization's New Mandatory Measures to Reduce Greenhouse Gases (GHGs) Emissions from International Shipping" (July 22, 2011)
- "Ports and Carriers United on the Need to Weigh Loaded Containers (IAPH/ICS/BIMCO/WSC Joint Press Release)" (December 12, 2011)
- "The International Association of Ports and Harbors Sponsors the International Maritime Organization's Asia/Pacific Regional Workshop on London Convention and Protocol, May 14-18, 2012, Jeju, Republic of Korea" (December 20, 2011)





### Press Releases (continued)

- "The International Association of Ports and Harbors Establishes New Vision and Mission Statements, Reaffirming the Organization's Commitment as a Leading International Body of The Global Port Industry" (June 8, 2012)
- "Maritime Industry Asks IMO to Require the Weighing of Containers" (June 18, 2012)
- "The International Association of Ports and Harbors Establishes a Women's Forum Conference Component for the Advancement and Empowerment of Women in the Maritime Industry" (July 2, 2012)
- "The International Association of Ports and Harbors Establishes a New Committee on Port Finance and Economics to Address New Challenges and Opportunities Facing the World Port Industry" (July 9, 2012)

### IAPH on Facebook

Launched in June 2011, IAPH is on Facebook. The number of IAPH FB users and followers is increasing as this social networking service tool offers a link to the general public and a channel for dialogue. As of July 2012, some 220 like the IAPH FB and some 93,000 people use and follow it in one way or another.

Please visit the IAPH FB and like it.

<http://www.facebook.com/iaphworldports?sk=wall>

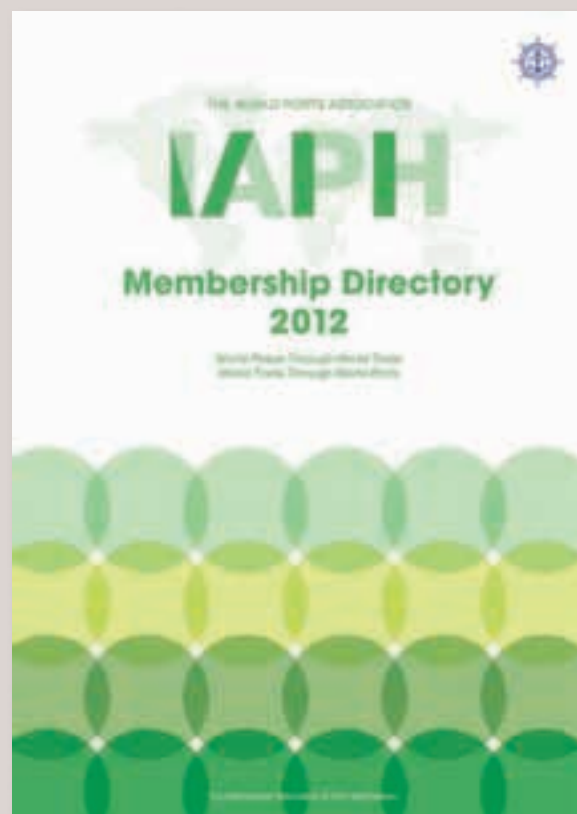
### IAPH Online Newsletter

The IAPH Online Newsletter is sent to around 1,500 subscribers on a bi-weekly basis since 2002 and contains up-to-date Association news, such as IAPH meetings, Technical Committee activities, member ports' news and other relevant information. Both members and non-members can receive the IAPH Online Newsletter.

Please contact: [newsletter@iaphworldports.org](mailto:newsletter@iaphworldports.org)

### IAPH Membership Directory

The IAPH Membership Directory provides easy-to-access information on our members, such as contact addresses and port cargo statistics, useful when networking among IAPH members.







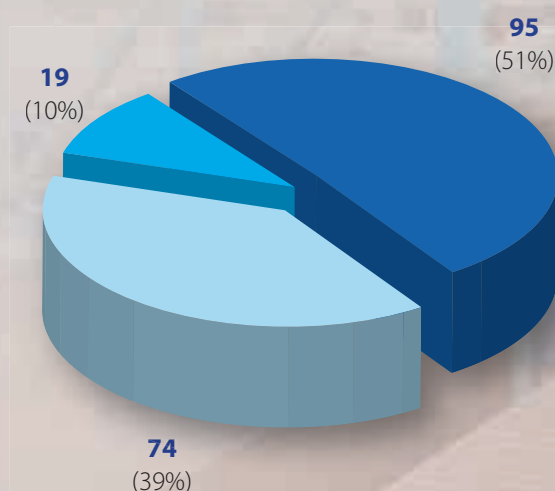
# Membership update

As of April 30, 2012, the Association comprises 331 members over 85 countries/economies. The regional breakdown for each membership is as listed below.

## Regular Members: 188

From May 1, 2011 to April 30, 2012, **three** members newly joined and **ten** members left. Current Regular Members in each region are as follows.

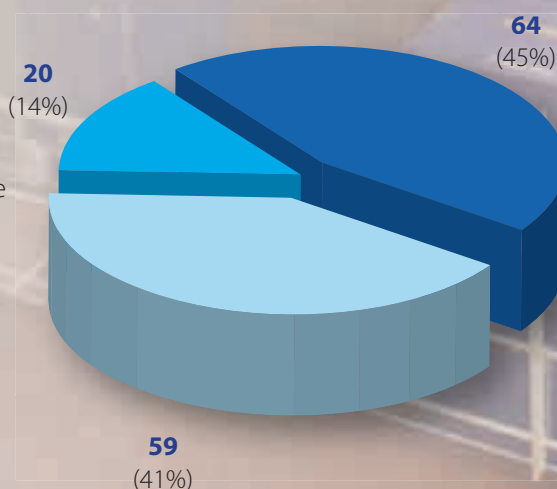
<b>1 Africa/Europe Region:</b>	<b>74</b>	
■ Africa region:	<b>23</b>	● Africa/Europe
■ Europe region:	<b>51</b>	● Americas
<b>2 Americas Region:</b>	<b>19</b>	● Asia/Oceania
■ North America region:	<b>12</b>	
■ South America region:	<b>7</b>	
<b>3 Asia/Oceania Region:</b>	<b>95</b>	
■ Asia region:	<b>85</b>	
■ Oceania region:	<b>10</b>	



## Associate Members: 143

From May 1, 2011 to April 26, 2012, **five** members joined and **nine** members left. Current Associate Members in each region are as follows.

<b>1 Africa/Europe Region:</b>	<b>59</b>	
■ Africa region:	<b>8</b>	● Africa/Europe
■ Europe region:	<b>51</b>	● Americas
<b>2 Americas Region:</b>	<b>20</b>	● Asia/Oceania
■ North America region:	<b>16</b>	
■ South America region:	<b>4</b>	
<b>3 Asia/Oceania Region:</b>	<b>64</b>	
■ Asia region:	<b>62</b>	
■ Oceania region:	<b>2</b>	









# 2011/2012 Accounts

## Balance Sheet

Appreciation of Japanese Yen against the major currencies during the year (107.9 to 100.7 Yen/Euro, 81.5 to 77.7 Yen/\$, from the end of 2010 to 2011) affected the IAPH accounts in an unfavourable manner. The devaluation of the security bonds in Euro and Sterling Lb in terms of Yen reduced the net worth

of the association by almost ¥10 million. In addition to this, as the revenue during this term decreased by about ¥10 million compared to the budget, the total financial net worth of IAPH as of the end of 2010 shrank to ¥369.4 million, ¥20 million less than the previous year.

## Balance Sheet as of December 31, 2010 and 2011

(Unit : Yen)			
Items	2011	2010	Difference
<b>I Assets</b>			
<b>Current Assets</b>	99,240,500	106,545,409	-7,304,909
Cash and Deposits	95,804,278	103,064,999	-7,260,721
Petty Cash	33,445	29,481	3,964
Ordinary Deposits	13,543,633	18,507,518	-4,963,885
Fixed Deposits	82,227,200	84,528,000	-2,300,800
Accrued Revenues	2,696,170	2,753,352	-57,182
Other Current Assets	740,052	727,058	12,994
<b>Fixed Assets</b>	306,519,278	342,282,263	-35,762,985
Specified Fixed Assets	39,782,318	60,747,740	-20,965,422
Retirement Benefits Fund	31,473,225	51,435,510	-19,962,285
IAPH Training Scholarship Fund	2,293,247	3,281,818	-988,571
Akiyama Prize Fund	6,015,846	6,030,412	-14,566
<b>Other Fixed Assets</b>	266,736,960	281,534,523	-14,797,563
Fixture and Equipment	46,225	64,176	-17,951
Investment Securities	262,948,752	277,728,364	-14,779,612
Leasehold Deposits	3,741,983	3,741,983	-
<b>Total Assets</b>	<b>405,759,778</b>	<b>448,827,672</b>	<b>-43,067,894</b>
<b>II Liabilities</b>			
<b>Current Liabilities</b>	4,838,157	7,951,566	-3,113,409
Accounts Payable	3,121,816	3,458,344	-336,528
Deposits Received	708,078	980,419	-272,341
Deferred Revenues	708,399	3,027,329	-2,318,930
Reserve for Wages and Allowances	299,864	485,474	-185,610
<b>Fixed Liabilities</b>	31,473,225	51,435,510	-19,962,285
Reserve for Retirement Benefits Fund	31,473,225	51,435,510	-19,962,285
<b>Total Liabilities</b>	<b>36,311,382</b>	<b>59,387,076</b>	<b>-23,075,694</b>
<b>III Net Worth</b>			
Restricted Net Worth	6,015,846	6,030,412	-14,566
Other Net Worth	363,432,550	383,410,184	-19,977,634
<b>Total Net Worth</b>	<b>369,448,396</b>	<b>389,440,596</b>	<b>-19,992,200</b>
<b>Total Liabilities and Net Worth</b>	<b>405,759,778</b>	<b>448,827,672</b>	<b>-43,067,894</b>



# Chair of the Finance Committee

Dear Sir,

It is my privilege as Chair of the Finance Committee to recommend the 2011 Financial Statements and Balance Sheet to the Executive for adoption and convey some general overview comments on the results achieved last year.

Firstly, it is with sincerest regrets that I am unable to attend the Mid-term Board Meeting. I am sure the occasion will be an undoubted success.

The Secretariat is again to be thanked for their help and support in carefully managing the Association's financial affairs given the tight budgetary constraints imposed. I will endeavour to constrain my comments on the accounts to the key aspect from my perspective, which was revenue collection. The nature of the Association's revenue generation from membership dues worldwide and continuing difficulties with the exchange rate fluctuations and the Yen cross rate and the fixed linkage to the SDRs, means there will always be pressure on the revenue aspects of the Association's affairs in the current environment. Quite simply however, there are budgetary expectations on the amount that should be paid and collected from regular and associate members alike, and any failure places the financial affairs of the Association under pressure. In addition, the strain on ports from the global financial crisis to pay their membership dues in full and on time, has meant our financial results were adversely affected. To help offset some of these difficulties, the Association sold a bond which is also commented on separately.

The Secretariat clearly appreciates the difficult and challenging financial environment which ports operate in, but equally strives to raise the awareness of membership obligations to pay in due time. This is a delicate balance. At the same time, the continuing work to reduce costs and work within budgeted levels of expenditure is now the norm.

The Secretary General's detailed comments are an accurate reflection of the individual areas in the accounts and highlight the work of the Secretariat in a number of key areas to effectively "balance the books" by collecting membership dues and controlling costs.

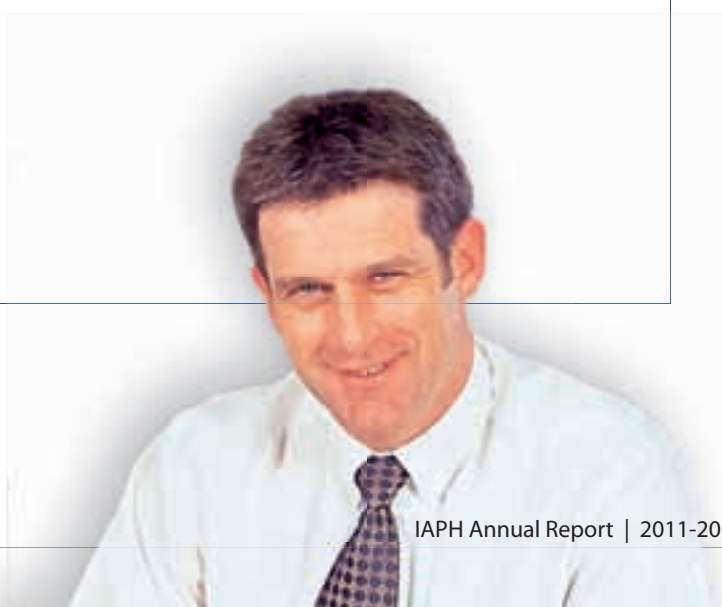
The overall results were satisfactory in a very challenging environment.

Again, in concluding I would like to convey my best wishes to the President and Executive for the successful running of the Mid-term Board meeting and again thank and congratulate the Secretary General for his continuing effort to manage the affairs of the Association prudently through a very difficult time.

Kind regards,

**Garth Cowie**

Chairman of Finance Committee





# Your officers

## for the term 2011/2013

### President



**Geraldine Knatz, PhD**  
**Executive Director**  
Port of Los Angeles, USA

### Secretary General



**Susumu Naruse**  
**Secretary General, IAPH**

### Vice Presidents



**1st Vice President for Asia/  
Oceania Region**  
**Grant Gilfillan**  
**CEO**  
Sydney Ports Corp, Australia

### Immediate Past President



**Gichiri Ndua**  
**Managing Director**  
Kenya Ports Authority, Kenya



**2nd Vice President for Africa/  
Europe Region**  
**Santiago Garcia Milà**  
**Deputy Managing Director**  
Autoritat Portuària de Barcelona,  
Spain

### Conference Vice President



**Arley M Baker**  
**Senior Director,  
Communications**  
Port of Los Angeles, USA



**3rd Vice President for  
Americas Region**  
**Bill Johnson**  
**Port Director**  
Port of Miami, USA





# Executive Committee

## as of August 22, 2012

### Executive Committee Members

#### Asia/Oceania Region (8 members)

**Atsushi Fujii**

Director for Management Strategy Unit  
Yokohama Port Corporation, Japan

**Martin Byrne**

Chief Executive Officer  
Port Nelson Ltd, New Zealand

**Richard Joost Lino**

President Director  
Indonesia Port Corporation II, Indonesia

**LE Cong Minh**

Director General  
Saigon Port Company Ltd, Vietnam

**Captain Abdul Wahab Al Diwani**

Director, UAE Marine Inspection and  
Survey Dept.  
National Transport Authority, Abu Dhabi  
UAE

**Kang, Beom Gou**

Deputy Minister for the Office of  
Logistics and Maritime Affairs,  
Ministry of Land, Transport and Maritime  
Affairs, Korea

**\*Captain David Padman**

General Manager  
Port Klang Authority, Malaysia

**\*Tai-Hsin Lee**

President  
Taiwan International Ports Corp Ltd,  
China

#### Africa/Europe Region (6 members)

**Dov Frohlinger**

Chief Operating Officer  
Israel Ports Development and Assets Co  
Ltd, Israel

**Bisey Uirab**

Chief Executive Officer  
Namibian Ports Authority (NAMPORT),  
Namibia

**Jean-Claude Terrier**

President of the Executive Board and  
Chief Executive Officer  
Grand Port Maritime de Marseille, France

**Leonids Loginovs**

Chief Executive Officer  
Freeport of Riga Authority, Latvia

**Eddy Bruyninckx**

CEO  
Antwerp Port Authority, Belgium

**\*Javier Gesé Aperte**

Deputy Director of Presidency  
Puertos del Estado, Spain

#### Americas Region (4 members)

**Ashley Taylor**

President  
Point Lisas Industrial Port Development  
Corp Ltd, Trinidad and Tobago

**Jerry Austin Bridges**

Executive Director  
Virginia Port Authority, USA

**Curtis J Foltz**

Executive Director  
Georgia Ports Authority, USA

**Alberto Díaz**

President  
National Port Administration, Uruguay

\* Newly elected in 2012

# Structure of IAPH

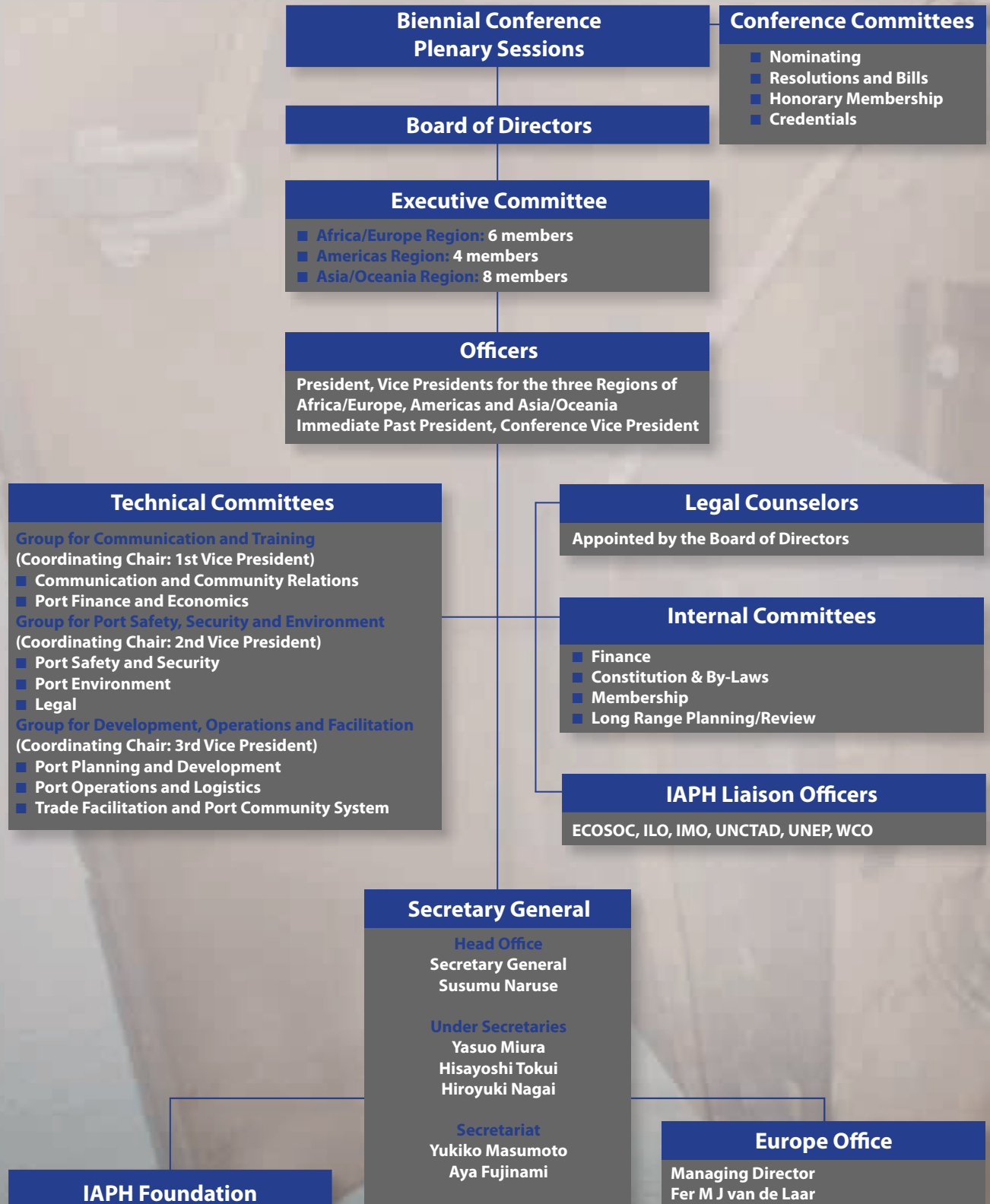






Photo: Port of LA

# IAPH



## The International Association of Ports & Harbors

### Head Office

7th fl. South Tower, New Pier Takeshiba, 1-16-1 Kaigan, Minato-ku, Tokyo 105-0022, Japan

Tel: +81-3-5403-2770

Fax: +81-3-5403-7651

Url: [www.iaphworldports.org](http://www.iaphworldports.org)

Email: [info@iaphworldports.org](mailto:info@iaphworldports.org)

### Europe Office

Spreeuwendaal 6, 2914 KK Nieuwekerk ad IJssel, The Netherlands

Tel: +31-180-32-33-39

Fax: +31-180-31-85-69

Email: [info@iaph.nl](mailto:info@iaph.nl)

