

# IAPH



## ANNUAL REPORT 2010-2011



# About IAPH

**T**he International Association of Ports and Harbors (IAPH) was founded in November 1955 under the motto 'World Peace through World Trade, World Trade through World Ports'. Today, as the global alliance of the world port community, it represents some 200 ports and 140 port-related organisations across about 90 countries worldwide. The member ports together handle over 60% of the world's sea-borne trade cargo and nearly 80% of global container traffic.

IAPH meets every two years at its World Ports Conference, the largest gathering of the world port community. Port executives and experts coming from all parts of the world exchange views and experiences about a range of issues and challenges. In addition, members of IAPH's three regions – Africa/Europe, Americas and Asia/Oceania – meet regularly at Regional Meetings to discuss common issues in a regional context.

IAPH actively addresses critical issues facing the port industry through its technical committees. Currently, there are seven technical committees, respectively tasked to study implications and recommend policies and measures in such areas as safety, security, environment, and IT application.

IAPH also proactively plays a significant role in tackling global issues at maritime-related UN agencies and other international organisations. For this, IAPH is granted special non-governmental organisation consultative status by ECOSOC, ILO, IMO, UNCTAD, UNEP and WCO.

IAPH will continue to play a pivotal role as a unique global forum of the port industry in strengthening co-operation and sharing experiences among the world's ports. Moreover, to effectively deal with many global issues, IAPH will also actively collaborate with other international organisations for the sustainable development of the world economy.



**WORLD PEACE THROUGH WORLD TRADE  
WORLD TRADE THROUGH WORLD PORTS**

# Contents

<b>President's message</b>	2
<b>Secretary General's overview</b>	4
<b>World Ports Conference, Busan</b>	6
<b>Conference resolutions</b>	10
<b>Regional meetings</b>	15
<b>Technical committees</b>	18
<b>WPCI report</b>	22
<b>Publications and promotion</b>	24
<b>2010/2011 accounts</b>	26
<b>Membership update</b>	30
<b>Officers for this term</b>	31
<b>Structure and secretariat</b>	33





# Strides and successes worth promoting



**T**oday, we continue to face challenges on many fronts. In addition to the uncertain global economy, concerns about safety - ranging from container handling to piracy - are paramount. The environmental challenges ahead of us are formidable. And the need to protect the international supply chain through modernisation and infrastructure investment is more vital than ever. It is with these issues in mind that we must do all we can to encourage international cooperation and collaboration among the world's ports and harbors.

During the 27th IAPH World Ports Conference in Busan, Korea, a number of important resolutions were promulgated to address the issues and concerns that we collectively share. Our resolution efforts are important, but equally we must work towards a common voice to effectively communicate our vision and actions to help ports everywhere thrive.

The information in this Annual Report underscores the strong achievements of the technical committees and IAPH-at-large during the past year. This overview of our collaborative, results-driven work speaks to the original intent of the IAPH founders and reflects an organisation whose members are deeply committed to working together.

As IAPH President, one of my major goals is to help ensure that we do all we can to convey the IAPH vision and share our achievements for the betterment of seaborne trade, the maritime industry and our global community.

With that in mind, as you read this Annual Report I encourage you to think about the success stories you and your organisation have had - or want to create - through your association with IAPH. You can share your thoughts with members of the Communications and Community Relations Committee by emailing [success@iaphworldports.org](mailto:success@iaphworldports.org). In doing so, we can re-double our efforts to effectively promote our achievements and reinforce the vital role that ports and harbors play in advancing commerce, prosperity and quality of life throughout the world.

A handwritten signature of Geraldine Knatz in black ink.

**Geraldine Knatz, PhD**

IAPH President  
Executive Director, Port of Los Angeles





# Looking back at 2010/2011

## Secretary General Naruse reviews the organisation's activities and successes in the past year



### 27th World Ports Conference and regional meetings

Seven hundred port people from all over the world gathered together in Busan, Korea, in May 2011 for a hugely successful ports conference. The superb opening ceremony was followed by a two-day working session with prominent speakers leading vigorous discussions on important issues concerning the industry.

The conference was accompanied by a series of IAPH in-house meetings. Many decisions were made at these meetings, the most important being Dr Geraldine Knatz's unanimous election as new IAPH president, along with the election of new vice-presidents. Hamburg Port Authority was selected as the host of the IAPH World Ports Conference in 2015, and the financial results of 2010 and the budget for 2011/2012 were approved. In addition to these decisions, IAPH adopted six resolutions, which addressed urgent issues from within the industry such as supply-chain safety and security, port development and the environment. The

resolutions clearly show the IAPH's stance on each issue and it is hoped that they will help raise awareness of IAPH and its aims (see pages 10-14).

Prior to the Busan conference, the following IAPH Regional Meetings took place over the past year:

- Americas Region in Halifax, Canada, September 2010 (AAPA conference)
- Africa/Europe Region in Arusha, Tanzania, December 2010 (PAPC conference)
- Asia/Oceania Region in Auckland, New Zealand, February 2011

I would like to express my deepest appreciation to the ports that hosted these events, with particular thanks to Busan Port Authority.

### Membership

As of the end of April 2011, the association comprises 342 members in 87 countries/economies. Since the last report to the Board of Directors in June 2010, the following three bodies have joined the association as Regular Members:

- National Ports Agency (Morocco)
- Virginia Port Authority (USA)
- Port of Melbourne Corporation (Australia)

### Technical committees and WPCI

Members of the technical committees have been working in accordance with their work plans for 2009/2011 and the project teams of the World Ports Climate Initiative have been vigorously tackling climate change issues. Outlines of discussion during the committee meetings in Busan are elaborated on later in this report, but it should be noted that the following final products finished over the past year are now available on the IAPH website (see page 21):

- Report on the Survey Results of Water Quality Issues in Ports
- Seaport and Climate Change - An Analysis of Adaptation Measures
- Port Community Systems Benchmark Survey
- Environmental Ship Index website (WPCI project)

## Essay contest and IT award

Entries for the two essay contests - the Akiyama Award and Busan Open Award - were judged by the Human Resources Development Committee. A total of 33 entries were received for the two contests. The IAPH IT Award contest was conducted by the Trade Facilitation & Port Community System Committee and received nine entries. Winners of all three competitions were announced at the plenary session in Busan (see page 7)

## New-look IAPH website

The IAPH website has been completely renovated under the leadership of the Communication and Community Relations Committee. The new service went live in March 2011. It is now much more user-friendly and easy to use and so we hope to see more IAPH members accessing it.

## New IAPH officers

Bill Johnson, port director, Port of Miami, and Arley M Baker, deputy executive director of communications, Port of Los Angeles, joined the team of IAPH Officers as Third Vice President and Conference Vice President respectively.

## Settlement of accounts

The financial net worth of the association declined from ¥410M (\$5.3M) to ¥389M (\$5M) as of the end of 2010, mainly due to the devaluation of the assets of bank bonds in Euros and Sterling, Lb in relation to the Japanese Yen. Although the appreciation of the Japanese Yen against major currencies decreased the financial net worth of the association during the period, the financial position of the association remains healthy because of the large amount of inner reserves of more than \$4M. The report of the independent auditors and comments from the chair of the IAPH Financial Committee, Garth Cowie of Port of Napier Limited, are also included in this report (see pages 28-29).

High-profile speakers at Busan included Port of Amsterdam CEO Dertje Meijer

## Budget for 2011/2012

Total revenues and expenses for 2011 are estimated at ¥142.3M (\$1.85M) and ¥144.1M (\$1.88M) respectively with a marginal loss of ¥1.8M (\$23,000) mainly because of appreciation of Yen against SDR, on which the calculation of membership fees is based. Totals for 2012 are ¥119.1M (\$1.55M) and ¥116.8M (\$1.52M) with a surplus of ¥2.3M (\$30,000). Although the budget is tight and unnecessary spending should be avoided, no serious financial problems are found in the association because of the reasons previously stated. Hence IAPH can support urgent and important projects and events when they need financial backing from the association.

## Future events

The 28th World Ports Conference will take place under the theme of 'Working on Today. Focusing on Tomorrow' at the JW Marriott at LA LIVE, right in the heart of the action in downtown Los Angeles from 6-10 May, 2013. Prior to this event, we will meet again at the Mid-Term Ports Conference in Israel in 20-23 May, 2012. The host, Israel Ports, is currently working on a detailed programme of events.



# Looking ahead in Busan

**Logistics and greener ways of managing ports were amongst the topics discussed at IAPH's most recent world ports conference**



Photos: BPA

Working sessions and the plenary were well attended by an estimated 700 delegates

**A**round 700 delegates, accompanying persons, invited speakers and VIP guests from 52 countries across the world, attended the 27th IAPH World Ports Conference, which was successfully held in Busan, Korea from 23 to 27 May 2011. It was hosted by Busan Port Authority under the slogan 'Embracing Our Future and Expanding Our Scope' - a theme that was explored in four stimulating working sessions.

**Working session 1 - Globalisation after the crisis** considered the challenges of world economy and trade in terms of slower economic growth, piracy and higher energy prices in the post-crisis era. New dimensions of globalisation were also presented.

The emergence of a truly global market in which emerging economies play a bigger role, the Green Shipping concept, Singapore's Secure Trade Partnership (STP) scheme, and ILO's efforts for safe container packing, were amongst the ideas presented.

**Working session 2 - Climate change and the world's ports** focused on IAPH's World Ports Climate Initiative (WPCI). It included presentations on the Environmental Ship Index (ESI) — a web-based tool to measure ocean-going ships' emissions of nitrogen oxide (NO<sub>x</sub>), sulphur oxide (SO<sub>x</sub>) and CO<sub>2</sub>; and Onshore Power Supply (OPS) as a 'green-labeled' source of electricity. The challenges faced by ports in terms of sustainable growth, mitigation against climate change and how these issues affect ports were also discussed.

In the second half of the session, several examples of current climate action were presented. These included shipping lines' demands for standards to measure port performance on key environmental parameters, the Green Award Foundation's approach to climate action, a Japanese strategy to prepare for sea level rise, and observation and an analysis of damages caused by the devastating tsunami of March 2011 in Japan.

**Working session 3 - Port logistics and community systems** gave delegates the opportunity to consider different ways to strengthen port logistics. Presentations and perspectives from different sectors of the industry were given including: a shipper, Amway, that is successfully operating its logistics hubs; a port authority, Hamburg, as it expands its rail connections; and a US rail operator, BNSF Railway, as it expands its intermodal facilities.

In the latter part of the session, the outcomes of an IAPH Port Community Systems (PCS) Benchmark Survey conducted in 2010 were revealed and a couple of successful PCS implementation cases were presented.

**Working session 4 - City and port** discussed the future visions of the ports of Amsterdam, Oakland and Melbourne. Plans included opportunities to improve business and optimise performance, as well championing the benefits and dynamism of a port city. The second half of the session was devoted to a cruise industry now catering to an increasingly diverse mix of people and offering various and unique forms of entertainment. The industry's economic impact on the local economy was also discussed.



## Decisions taken at plenary at the world ports meeting

- Settlement of Accounts for 2010 and the Budget for 2011/2012 were duly approved (see pages 26-27).
- New lineup of Officers and Executive Committee members (see pages 31-32)
- Election of Honorary Members

**The following individuals were elected as IAPH Honorary Members for their extraordinary contribution to the association during their years as IAPH members:**

- Mr. José Perrot, Grand Port Maritime du Havre, France
- Mr. José Luis Estrada, Puertos Del Estado, Spain
- Mr. Haihu Lu, Shanghai International Port Group, China
- Mr. Gichiri Ndua, managing director, Kenya Ports Authority, Kenya (IAPH President 2009-2011)

Mr. Manfred Reuter, director, International Affairs, Hamburg Port Authority, was also presented with a Presidential Citation.

### Resolutions adopted

**IAPH made its position clear by adopting resolutions on the following six topics (see page 10):**

- Resolution on the Safety of Containers in the Supply Chain
- Resolution on the Development of Port Infrastructure
- Resolution on the Environmental Ship Index of WPCI
- Resolution on Piracy
- Resolution Expressing Sympathy to the Victims of the Great East Japan Earthquake
- Resolution Expressing Appreciation to the Host

## Essay contest and IT award 2011

Every two years IAPH holds three competitions inviting essays and reports on projects to be submitted on specific themes. Winners receive their awards at the bi-annual World Ports Conference

### Akiyama Award Contest

#### First prize

Femi Jegede, AGM, Corporate & Strategic Planning, Nigerian Ports Authority  
*'Strategy to increase port efficiency and productivity – the great leap'*

#### Distinguished

Kiki Mohammad Hikmat, assistant corporate secretary, PT Pelabuhan Indonesia II  
*'Simple ways to keep congestion at bay'*

### Busan Open Essay Contest

#### First prize

Matt McDonald, infrastructure manager, Port Nelson Limited, New Zealand  
*'Successful strategies for making your port a green port'*

#### Distinguished

Amol Sawale, associate general manager, Department of Horticulture, Mundra Port & SEZ Limited, India  
*'Successful strategies for making your port a green port'*

### IT Award

#### First (Gold) prize

Port of Barcelona, Spain  
*'The TRANSPORTIC project - the mobility solution applied to containers transport in Barcelona port'*

#### Second (Silver) prize

National Port Administration (ANP), Uruguay  
*'Integration of IT systems to improve the management of Uruguay's commercial ports towards a community cargo system'*

#### Third (Bronze) prize

Israel Ports Development and Assets Company Ltd., Israel  
*'An integrated community system for managing IMO Crew Lists and electronically monitoring the entrance of seamen into the country'*

Essay competition winners receiving their awards in Busan. Left to right: Femi Jegede; Matt MacDonald; Gichiri Ndua, who presented the awards; Kiki Mohammad Hikmat; and, Amol Sawale



# Working sessions programme: 24-26 May, 2011

## **Session I: Globalisation after the crisis**

**Moderator:** Gichiri Ndua, IAPH president

### **Session I-1: The new face of the world economy and global trade**

- **The world economy after the global crisis**  
Ede Jorge Ijjasz-Vasquez, sector manager, Sustainable Development, China and Mongolia, The World Bank
- **New challenges and prospects for the global shipping markets**  
Andreas Nordseth, chairman, The Consultative Shipping Group, director general, Danish Maritime Authority
- **Scenario of future energy demand and supply: oil and liquid natural gas**  
Young-Seok Moon, vice-president, Korea Energy Economics Institute

### **Session I-2: New dimensions of globalisation**

- **New strategies in the global shipping industry**  
Hak-So Kim, president, Korea Maritime Institute
- **Developments in maritime and supply chain security**  
Col Michael Chen, chief executive, ST Education & Training
- **The ILO's contribution to safe container packing and port worker training**  
Marios Meletiou, senior technical specialist (Ports and Transport) Sectoral Activities Department, ILO

## **Session II: Climate change and the world's ports**

**Moderator:** Geraldine Knatz, IAPH 1st vice-president

### **Session II -1: World Ports Climate Initiative (WPCI)**

- **An inland port...moving ESI and more...**  
Eddy Bruyninckx, CEO, Antwerp Port Authority
- **WPCI - update of the projects:**
- **Environmental Ship Index (ESI)**  
Henri van der Weide, policy advisor safety, security & environment, Port of Amsterdam
- **On-shore Power Supply (OPS)**  
Claes Sundmark, vice-president, sales and marketing, Port of Gothenburg
- **Port climate action in Rotterdam**  
Peter Mollema, director, port planning & development, Port of Rotterdam

### **Session II -2: Climate action in progress**

- **Environmental improvements in the supply chain**  
Brian Noe Kristensen, head of Far East Asia Line Operations Cluster, Maersk Line
- **Green Award's approach to climate action**  
Pieter Struijs, chairman of Green Award Foundation, IAPH Honorary Member
- **Port climate action for adaptation**  
Masahiko Isobe, professor, Department of Socio-cultural Environment Studies, Graduate School of Frontier Sciences, University of Tokyo
- **[Special presentation] The tsunami impacting eastern Japan and preparedness for an extraordinary natural disaster**  
Takehiko Fujita, acting president, Port and Airport Research Institute, Japan

### Session III: Port logistics and community systems

Moderator: Santiago Milà, IAPH 3rd vice-President

#### Session III-1: Strategies to strengthen port logistics

- **Amway and the global supply chain: regional centres and streamlining the supply chain**  
Robert Hunter, vice-president, Access Business Group (Amway)
- **Why hinterland logistics are crucial for a successful port development**  
Jens Meier, CEO, Hamburg Port Authority
- **Rail access in North America**  
Frederick R Malesa, vice-president of BNSF Railway

#### Session III-2: Advancing port community systems

- **Keys to successful port community systems**  
Santiago Milà, IAPH 3rd vice-president, deputy MD, Barcelona Port Authority
- **Port community systems benchmark survey**  
Olivier Jean-Degauchy, head of product, SOGET
- **Plans for future PCS service in Busan port**  
Hee-Soo Park, port information technology director, Busan Port Authority

### Session IV: Cities and Ports

Moderator: Grant Gilfillan, IAPH 2nd vice-president

#### Session IV-1: Port redevelopment

- **Port (area) redevelopment; lessons learned in Amsterdam**  
Dertje Meijer, CEO, Port of Amsterdam
- **The Port of Oakland as a regional economic engine: a repurposed role**  
Richard Sinkoff, director, environmental programs and planning, Port of Oakland
- **Lessons in port area redevelopment**  
Keith Gordon, executive general manager, port operations, Port of Melbourne Corporation
- **New approaches to port area redevelopment**  
Olivier Lemaire, director general, International Association of Cities & Ports (AIVP)

#### Session IV-2: Cruise ports and the cruise industry

- **The Indian Ocean...cruise tourism's new frontier**  
Thomas Mathibela, secretariat, Cruise Indian Ocean Association
- **Cruise industry: 2011 and beyond**  
Bill Johnson, port director, Port of Miami
- **Cruise ports and cruise industry: tourism perspectives**  
Kaye Chon, professor, dean and chair professor, School of Hotel & Tourism Management, Hong Kong Polytechnic University
- **Cruises and cruise itinerary**  
Kelvin Tan, regional director, Asia Pacific, Royal Caribbean Cruises



# Resolution on the **Safety of Containers in the Supply Chain**

**RECOGNISING** that each mode of transport in the international supply chain is exposed to serious risks as a consequence of incorrectly stowed, overweight and incorrectly documented containerised cargo that may endanger

- Vessel safety by incorrect weight information of containers
- Port operation by overweight or unstable containers
- Road transport safety by unstable containers and may cause damage to roads by overweight containers;

**NOTING** that, in spite of efforts made by international organisations and associations to compile and publish various guidelines(\*) for safe transport of containers, these risks have not decreased;

**RECOGNISING** that risks for workers participating in intermodal transport, including port operations, should be minimised as much as possible;

**RECOGNISING** further that the root of this problem is the lack of knowledge and sometimes inaccurate declaration of shippers about containers at the origin of transport;

**RECOGNISING** that Governments and their Agencies are the sole parties that can exercise effective control over all modes of transport in the supply chain;

On a proposal duly seconded, it is unanimously resolved that

1. IAPH requests international organisations such as ILO and IMO to adopt requirements for shippers to correctly pack and document cargo in containers including the mandatory accurate weighing at the origin of the shipment;
2. IAPH urges shippers of containers at the origin of transport to apply such requirements to ensure safety in the international supply chain;
3. IAPH further requests Governments and their Agencies to establish effective legal requirements and control mechanisms to ensure the correct application of the requirements referred to above;
4. IAPH further requests parties responsible for road infrastructure to properly designate and promptly develop when necessary, road systems for special and bulky port cargo such as heavy containers and oversized cargoes.

(\*) International guidelines on safe transport of containerised cargoes:

IMO / ILO / UNECE Guidelines for Packing of Cargo Transport Units

ILO; Safety in the Supply Chain in relation to packing of Containers (2011)

ICS, WSC: Safe Transport of Containers by Sea (2008)

# Resolution on the Development of Port Infrastructure

**RECOGNISING** that ports are indispensable logistics hubs for trade to provide industries and private individuals with efficient access to worldwide markets;

**RECOGNISING** further that ports also play a critical role as an economic engine of local and regional communities to create significant economic opportunities and jobs;

**NOTING** that world trade and global port throughput experienced a sharp decline in 2009 but bounced back in 2010 to reach almost the highest level recorded since 2008 and as the world economy will expand steadily in years to come, demand for ports is expected to grow;

**CONCERNED** that poor connections between ports and their hinterland may not always allow efficient and economic transport of port cargo, especially where it involves heavy and/or oversized cargo;

**RECOGNISING** that port infrastructure including port-related land transport infrastructure which needs a long lead

time to plan and construct, has to be further developed and upgraded to meet these emerging requirements;

**RECOGNISING** that the trend towards larger capacity ship sizes will continue, in particular in container ships, with 18,000teu container ships emerging soon;

**CONCERNED** that, in some countries, governments' austerity programmes have had a severe impact on the development of sufficient port infrastructure including land connection facilities;

On a proposal duly seconded, it is unanimously resolved that

1. IAPH urges governments to recognise the important role that ports play in national and local economies;
2. IAPH urges port authorities and States to allocate sufficient resources for the timely development of port infrastructure such as approach channels, breakwaters, terminals and port-related land transport infrastructure.

# Resolution on the **Environmental Ship Index of WPCI**

**RECALLING** that a resolution of the Board of Directors of IAPH on a worldwide approach to improve air quality and reduce greenhouse gas emissions in ports was adopted on 16 April 2008 in Dunkirk, France;

**NOTING** the launching of the World Port Climate Initiative (WPCI) in November 2008 in Los Angeles, USA where, inter alia, the Project Group on the Environmental Ship Index (ESI) was formed;

**RECOGNISING** that measures to reduce emissions of criteria pollutants may be effectively combined with measures that reduce greenhouse gas emissions;

**NOTING** that ports have a responsibility for the quality of the local environment where air quality may constitute a limiting factor for port development;

**RECOGNISING** that a licence to grow presupposes incorporation of sustainability in the ports environmental strategy;

**MINDFUL** that the Environmental Ship Index project that was launched on 1 January 2011 will contribute positively to the above considerations;

**NOTING** that IAPH has the positive response of Ship Owners, Managers and Operators to the ESI initiative;

On a proposal duly seconded, it is unanimously resolved that

1. IAPH urges Ports, members and non-members alike, to join the Environmental Ship Index project as an Incentive Provider;
2. IAPH invites other organisations that share the above considerations to also join as an Incentive Provider;
3. IAPH invites Ship Owners, Managers, and Operators to join the ESI Initiative;
4. IAPH requests Incentive Providers of the ESI to encourage Ship Owners, Managers and Operators to join the ESI initiative.



# Resolution on Piracy

**NOTING** that the obstinate spread of incidents of piracy in the world is not only expanding in numbers, with more than 400 attacks per year since 2009, but also expands its sea area stretching to international waters more than 1,000 nautical miles from coastal areas;

**CONCERNED** that ceaseless acts of modern piracy will hamper the smooth development of the world maritime trade and will force shipping lines to divert their fleet to navigate remote detour routes, which results in the increase of transportation cost and air emissions and causes ports in piracy-affected waters to lose cargo and endanger their passengers;

**CONCERNED** about the continuing inhumane mal-treatment of seafarers kept hostage in ever degrading circumstances;

**CONCERNED** about the failure of the world community at large to mobilise all efforts to end this ongoing and disturbingly increasing scourge;

**CONCERNED** about the observed change in the area at risk to include ports;

**NOTING** that the pirate attacks in the area of the Gulf of Aden and off-Somalia waters accounted for almost half of the world pirate incidents in recent years with nearly 2,400 seafarers having been taken as hostages for ransom since 2007 in that area alone;

**RECOGNISING** that while international counter piracy efforts based on the UN Security Council Resolutions have been performed by patrolling and escorting vessels navigating in the area of the Gulf of Aden and off-Somalia waters by US, NATO, EU and other states' naval forces since 2008, such anti-piracy operations by naval forces have not yet resulted in sufficient eradicating effects against modern pirates operating in vast sea areas;

**RECOGNISING** further that only a few States take judicial steps against arrested pirates such as detainment, bringing to court for trial and putting the convicted into imprisonment by such States;

**PREPARED** to provide all possible support in helping to remedy this ordeal for the maritime industry;

**MINDFUL** that IAPH adopted a resolution on piracy in Savannah in June 2010 wishing to support seafarers and stakeholders in the maritime industry, recognising its responsibility as the voice of world ports;

On a proposal duly seconded, it is unanimously resolved that

1. IAPH urges the international community to share the recognition of the specific features of modern pirates which take seafarers as hostage only for ransom and attack in ever increasing wide sea areas, which makes effective suppression difficult;
2. IAPH urges States to take measures for raising the efficiency and capacity of operation of navy forces to suppress piracy acts in wider sea areas and better utilising the limited number of frigates introduced by each State by forming international combined naval forces under united commands in each sea region;
3. IAPH also urges States to take judicial steps to effectively deal with arrested pirates such as detainment, putting them on trial in their courts, and imprisoning convicted pirates;
4. IAPH urges States to ratify international conventions related to piracy suppression such as the United Nations Convention on the Law of the Sea, 1982 (UNCLOS), Convention for the Suppression of Unlawful Acts against the Safety of Maritime Navigation (SUA Convention) and the International Convention against the Taking of Hostage (Hostage Taking) in order to strengthen the international legal framework for suppression of piracy;
5. IAPH also urges States to prosecute arrested pirates under the jurisdiction of the arresting States;
6. In order to be able to effectively undertake the actions mentioned under 3, IAPH urges States to review their national legislation and incorporate in a uniform way into their national law the UNCLOS definition of piracy as well as the SUA Convention that complements the UNCLOS provisions regarding piracy;
7. In order to fulfill the work mentioned under 4, IAPH draws attention to the possibility of getting guidance by IMO and to the hereto related documents of IMO's Legal Committee concerning the uniform and consistent application of the provisions of international conventions relating to piracy to allow for effective and efficient piracy prosecutions: LEG 98/8, LEG 98/8/1, LEG 98/8/2 and LEG 98/8/3.

# Resolution Expressing Sympathy to the **Victims of the Great East Japan Earthquake**

**REALISING** that the Great East Japan Earthquake and the resulting tsunami that struck the northeastern part of Japan on 11 March 2011 was one of the most devastating earthquakes in its recorded history, leaving over 25,000 people dead or missing, and more than 130,000 people still taking refuge in public places;

**NOTING** that the area devastated by the earthquake and tsunami now shows signs of recovery, thanks to the assistance of many foreign countries offering various means of help as well as strenuous efforts by the government of Japan and its people;

**DETERMINED** to continue with the IAPH Earthquake and Tsunami Relief Fund that was established in March 2011 at

the initiative of Mr. Leonids Loginovs, Chief Executive Officer, Freeport of Riga Authority, Latvia, to offer our financial assistance through the Japanese Red Cross to assist ports, their workers and families in the devastated area;

**NOW BE IT RESOLVED** at the Plenary session of the 27th IAPH World Ports Conference, Busan, Korea, on 26 May, 2011, that the members of the International Association of Ports and Harbors express their deep sorrow and sympathy for the victims and their families of this most tragic and devastating earthquake and tsunami and strongly pray and wish for an earliest recovery of the affected area and people, including the affected ports, their workers and families, and furthermore donate US\$10,000 from IAPH general accounts to the above fund.

## Resolution Expressing **Appreciation to the Host**

**WHEREAS** the 27th Conference of the International Association of Ports and Harbors convened at the BEXCO, has been in all respects successful due to the excellent organisation and execution of the business and social programmes;

**NOW THEREFORE IT BE RESOLVED** that on this Twenty-Sixth Day of May on the occasion of the Plenary of the 27th Conference, the International Association of Ports and Harbors, assembled in Busan, Korea, from 23 to 27 May 2011, hereby extends its gratitude to the following;

**Mr. Jong-Hwan Chung**

Minister, Ministry of Land, Transport and Maritime Affairs of Korea

**Mr. Nam-Sik Hur**

Mayor, Busan Metropolitan City

**Mr. Ki-Tae Roh**

President and CEO, Busan Port Authority

All the staff of IAPH Busan 2011 Secretariat

**AND IT BE FURTHER RESOLVED** that our thanks also go to the Chairmen and Speakers of the entire conference, to the Sponsors and Exhibitors, to Lee Convention Co Ltd, to other generous sponsors, to the media for their respective support and contribution to the success of the Conference;

Also those in various capacities, including spouses, partners and accompanying persons for their participation in the 27th World Ports Conference of this Association.

# Around the regions

## IAPH members met in Canada and Tanzania to catch up on regional membership and training scheme progress



Photo: Port of Halifax

Americas Region delegates pose with SG Naruse and President Ndua

### Americas Region

**A**n IAPH Americas Regional Meeting was held on the 20 September, 2010, alongside the AAPA (American Association of Port Authorities) Annual Convention. The four-day AAPA event took place in Halifax, Canada. The convention was well attended by AAPA members, and discussions focused on critical issues that are affecting the region such as 'Economic outlook and global trade patterns', 'Supply chain and infrastructure', and 'Trends and innovations in the cruise industry'.

Discussions at the IAPH Regional Meeting evolved around how to expand the membership from within the Americas, as IAPH does not have a large membership from this region.

Suggestions put forward included: "IAPH should become a voice of the global port industry", "IAPH should provide international information that cannot be delivered by regional organisations such as AAPA", and therefore "IAPH needs to be more visible to the outside world including the AAPA members". In addition to these discussions, the procedure to elect a new vice-president from the region was confirmed by the attendants.

Furthermore, IAPH President Ndua and Secretary General Naruse were invited to the AAPA's board meeting to discuss ways to further foster co-operation between the two ports organisations.

### Africa/Europe Region

**A**n Africa/Europe Regional Meeting was held on 7 December, 2010, when the 8th PAPC (Pan African Ports Co-operation) Conference took place over a three-day period in Arusha, Tanzania. A variety of interesting presentations were delivered by both regional and international speakers under the conference theme 'Improving ports performance to fast-track Africa's economic development'. IAPH Secretary General Naruse was invited to speak at the opening session of the conference.

At the IAPH meeting it was decided that the Hamburg Port Authority would host the IAPH World Ports Conference in 2015 and this would be reported to the IAPH Board Meeting in Busan in May 2011 for official approval. Measures to facilitate the implementation of the Young Professionals Programme - an IAPH scholarship programme to send African port professionals to European ports for training - were also discussed among the members.



Photo: Tanzania Port Authority

Delegates at the Africa/Europe meeting in Tanzania



# Asia and Oceania in Auckland

**Supply chain, sustainability and security were among the wide range of topics discussed in New Zealand**



Photos: POAL

Secretary General Naruse (centre, bottom row) meets Asia/Oceania delegates in Auckland

**T**he IAPH Asia/Oceania Region met on 11 February, 2011 in Auckland, New Zealand. Thirty four members from the region attended the event hosted by Ports of Auckland Limited, New Zealand, whose CEO is Tony Gibson. Port forum sessions were organised on 10 February prior to the meeting, attracting nearly 100 people. We were honoured to have the Hon Steven Joyce, Minister of Transport, New Zealand, deliver the keynote address to open the forum.

## **Port forum session 1 - Supply chain**

focused on the role ports are now expected to play in the international maritime supply chain. Three different perspectives were put forward: New Zealand Customs, Fonterra, a shipper exporting dairy products, and shipping line Maersk New Zealand.

**Port forum session 2 - Sustainability** explored the challenges and opportunities of fighting global warming and promoting sustainability. It focused on one of IAPH's WPCI projects: the Environmental Ship Index; energy security as seen from the perspective of world business leaders; and Ports of Auckland's experience in dredging and reclamation.

**Port forum session 3 - Capacity** provided an interesting insight into what factors a port should consider in its capacity building. For example, the realities and challenges in determining the best port service levels to its customers and partners.

Stimulating presentations were made on the Port of Sydney's experience in community relations, demand management using pricing mechanisms to smooth demand, as explained by a local university professor, and Port Klang's initiatives to overcome the recent global economic downturn.

**Port forum session 4 - Protection/risk security** focused on Port Nelson using audio-visual effects to illustrate its experiences in dealing with noise issues and using methyl bromide for fumigation purposes.

The Port of Lyttelton's disaster recovery in the aftermath of the earthquake and tsunami in 2010 was overviewed and several practical suggestions offered. Japan's research experience in tsunami disaster management was also presented and discussed.

# Port forum programme: 10 February, 2011

## Session 1 – Supply Chain

Chair: Grant Gilfillan, IAPH 2nd vice-president, Sydney Ports Corp

- **Border security, a global perspective**  
Martyn Dunne, comptroller, Customs New Zealand
- **Obligation of ports, an exporter's perspective**  
Nigel Jones, general manager supply chain strategy, Fonterra Trade and Operations
- **Productivity, a shipping line's perspective**  
Julian Bevis, country manager, Maersk New Zealand Limited

## Session 2 – Sustainability

Chair: David Padman, Port Klang Authority

- **Environmental Ship Index – its background and operation. World Ports Climate Initiative (WPCI) update**  
Fer van de Laar, managing director, IAPH Europe Office
- **Environment and climate: implications, reaction and response**  
Rick Boven, director, The New Zealand Institute
- **Sustainable reclamation - a case study**  
Ben Chrystall, general manager port infrastructure, Ports of Auckland Limited

## Session 3 – Capacity

Chair: Jens Madsen, Ports of Auckland Limited

- **Port/city relationship**  
Shane Hobday, general manager, safety, security & environment, Sydney Ports Corporation
- **Pricing to manage demand**  
Tava Olsen, professor, University of Auckland
- **Port as a gateway to national recovery**  
David Padman, assistant general manager (regulatory), Port Klang Authority, Malaysia

## Session 4 – Protection/risk/security

Chair: Manjit Singh, MPA, Singapore

- **Port Nelson's experiences in relation to methyl bromide use and noise issues**  
Martin Byrne, CEO, Port Nelson Limited, New Zealand
- **Disaster Recovery: Earthquake Lyttelton – a case study**  
Peter Davie, chief executive, Lyttelton Port of Christchurch
- **Adaptation measures against tsunami – Japan's experiences**  
Masahiko Furuichi PhD, Port & Airport Research Institute, Japan



# In-depth debate of issues

## The all-important IAPH Technical Committees met in Busan to agree their 2011 to 2013 work plans

**T**he IAPH Technical Committees are regarded as the backbone of IAPH. They are tasked to study a range of common-interest issues and concerns to the world port community. They are also assigned to prepare or propose IAPH position papers and resolutions on critical issues in maritime fields for submission to international agencies, including IMO, to advocate the principles of IAPH.

In Busan in May 2011, eight technical committees discussed the final outcomes of their efforts during the past two years and several final technical reports were added to the IAPH library on the website. For the full minutes of each committee meeting, please access each 'committee room' on the IAPH website [www.iaphworldports.org](http://www.iaphworldports.org).

The technical committees also examined four IAPH Resolutions that went on to be submitted for adoption at the Plenary Session in Busan (see pages 10-14).

As it was decided in a board meeting in Busan that the Human Resources Development Committee would merge with the Communication & Community Relations Committee. The now seven committees, including the augmented Communication & Community Relations Committee, adopted new work plans for the term 2011/2013.



### **1. Group for Communication & Training (Group I)** **1.1 Communication and Community Relations Committee**

Chaired by Monica Bonvalet,  
Grand Port Maritime de  
Marseille, France

#### **Mission:**

1. Provide a training programme for developing ports.
2. Review and improve internal and external communications of the association.
3. Build a knowledge base for members on how to deal with community relations.

#### **Work plan:**

- Assist and implement the Essay Contest to be culminated in the awarding of the Akiyama Prize and the LA Open Prize at the 2013 conference.
- Assist and implement the IAPH Training Scholarship.
- Review, monitor and improve the above two schemes as and when necessary.
- Strengthen use of IT applications for IAPH activities, including improvements of IAPH website.
- Formulate a communications plan for IAPH.
- Branding for IAPH.
- Review and enrich the communication case studies.
- Assist and implement IAPH Communication Award.



### **2. Group for Port Safety, Security & Environment (Group II)** **2.1 Port Safety & Security Committee**

Chaired by Shane Hobday,  
Sydney Ports Corporation,  
Australia

#### **Mission:**

1. Collect, interpret and summarise for the Association the latest relevant information concerning port safety and security requirements, initiatives and best practices.
2. Provide analysis and draft positions on port safety and security matters to be placed on the agenda of international organisations such as IMO, ILO, ISO, WCO, IALA, etc.

#### **Work plan**

- Provide commentary or report on port safety and security-related developments both at the UN and other international organisations, focusing on their effects and implications for the port industry with special attention to matters relating to piracy.
- Monitor developments of port security introduced or practiced in ports and provide relevant information to the association regarding proposed changes and best practices. In particular:



- i) Review ISPS Code practices implemented at ports since July 2004 and collect related case examples of problems or best practices at ports;
- ii) Collect best practices of security measures including advanced information technology solutions implemented at ports.
- Monitor developments of supply chain security at ports and analyse their implications for ports. In particular:
  - i) Monitor initiatives or developments for supply chain security including AEO (Authorised Economic Operator) introduced by countries in the world;
  - ii) Collect and disseminate best practices and technical developments on port and supply chain security.
- Monitor developments and collect best practices on port safety for dissemination among members, including:
  - i) Handling of dangerous goods in the port environment, paying attention to the risk of fumigated containers, new fuels for vessels e.g. LNG;
  - ii) Developments in safety measures at ports to address the risks associated with overweight containers and improperly packed containers;
  - iii) Developments in safety measures at ports associated with risks of defective yard equipment.
- Increase cooperation with port safety related technical organisations (PIANC, ICHCA, IALA, OCIMF) to ensure that their recommendations are aligned with the objectives of ports.



## 2.2 Port Environment Committee

Chaired by David Padman, Port Klang Authority, Malaysia

### Mission:

1. Monitor trends in environmental areas that affect ports including, but not limited to, air quality, dredging/dredged material disposal, soil remediation, ballast water, habitats, ship wastes and reception facilities.
2. Provide information on port environmental matters to the association concerning positions put forth on behalf of IAPH at international organisations such as IMO, IALA, UNCTAD, ILO, etc.
3. Develop a Green Port Programme and develop framework.
4. Co-ordinate with the PIANC Environmental Commission by active participation of IAPH members on PIANC working groups, consistent with the IAPH-PIANC joint agreement.
5. Maintain a close liaison with other environmental and dredging organisations such as AAPA, CEDA, WODA, USACE, IADC and others.
6. Oversee activities of the WPCI.

### Work plan:

- Monitor progress and provide reports on port environment-related developments made at international organisations including IMO, in particular at the London Convention and the Marine Environmental Protection Committee.
- Share best practices and experiences to tackle climate change and promote port clean air programmes in close co-ordination with the World Ports Climate Initiative (WPCI) with the following projects to be developed further:
  - ▶ Carbon Footprint Inventory
  - ▶ Yard Equipment
  - ▶ Environmental Ship Index
  - ▶ Onshore Power Supply (High Voltage Shore Connection System)
  - ▶ Sustainability in (Terminal) Lease Contracts
  - ▶ Intermodal Transport
  - ▶ LNG Fuelled Vessels.
- Address the inadequacy of port reception facilities in accordance to IMO's Action Plan, maintaining close co-operation with the Industry Reception Facility Forum.
- Monitor progress of the Ballast Water Convention, in particular the relevant effects of the convention onto ports when it goes into effect.
- Collect examples and best practices about other environmental problems, such as noise, lighting, water quality, dust and impacts on surrounding communities.
- Increase co-operation on port environment related issues with other international organisations, such as PIANC.
- Prepare IAPH Environmental Award.



## 2.3 Legal Committee

Chaired by Frans van Zoelen, Port of Rotterdam Authority, the Netherlands

### Mission:

1. Initiate, follow-up, study and recommend proposed action to be taken on behalf of IAPH concerning any issues in which the collective interests of port authorities are brought into question from the legal point of view.
2. Follow and if necessary intervene in international arenas which produce legal instruments relevant to IAPH, especially the Legal Committee of IMO.
3. Assist other technical committees of IAPH with respect to relevant legal matters and to international legal instruments promoted by international organisations.

### Work plan (Legal Committee):

- Update and further expand the Introduction to Maritime Law for Port Officials and IAPH Legal Data Base through the assistance of Erasmus University, Rotterdam.
- Monitor developments in the field of modernisation of models for port regulations.
- Monitor developments of 'Places of Refuge' not only in IMO but also in other organisations, in particular EU's proposed legislation, the Maritime Safety Package.
- Monitor legal developments made in international organisations including IMO and UNCITRAL, including legal issues related to piracy.
- Monitor developments of UN Convention on Contracts for the International Carriage of Goods Wholly or Partly by Sea at UNCITRAL, and Draft Protocol to the HNS Convention at IMO.
- Monitor status of ratifications of various relevant conventions, such as Bunkers Convention, HNS Convention and Wreck Removal Convention.
- Produce comments or reports to assist other technical committees and members to properly understand requirements of international legal frameworks.
- Collect and review national or regional legal issues or legal developments relevant to port authorities.
- Legal topics concerning port governance.



### Group for Port Development, Operations & Facilitation (Group III) 3.1 Port Planning & Development Committee

Chaired by Wolfgang Hurtienne, Hamburg Port Authority, Germany

#### Mission:

1. Monitor, collect, analyse and disseminate information pertaining to development, planning, design, construction and maintenance of port and harbor facilities.

### Work plan:

- Analyse the demand and requirements of specialised port infrastructure for the off-shore wind industry.
- Analyse the effects of climate change on the navigability of the Northern Sea Route and the Northwest Passage.
- Analyse the lessons learned from harmful rumours about radiation in the case of the East Japan Great Earthquake.



### 3.2 Port Operations & Logistics Committee

Chaired by Yoseph Bassan, Ashdod Port Company Ltd, Israel

#### Mission:

1. Monitor, collect, analyse and disseminate information and elaborate recommendations pertaining to the improvement of port services, port operations, port and terminal management considering the port as an intermodal link and crucial node of the logistics chain.

### Work plan:

- Prepare an introductory report on productivity indicators of container terminals, which could help port authorities to identify and develop suitable performance indicators.
- Collect cases of actual application of port performance indicators, review and prepare general recommendations.
- Collect and report examples of cutting-edge measures and other innovations to improve productivity of terminal operations.
- Study the role of ports in the logistics chain by collecting examples of logistics parks connected to ports, and analyse intermodality and inland access.
- Develop criteria for hinterland area and port traffic-quantitative analysis with regard to types of cargo.
- Saving energy in port.
- Impact of mega vessels on port equipment.
- Collaborate with PIANC WG 135 on container terminals of small and medium ports.



### 3.3 Trade Facilitation & Port Community System Committee

Chaired by Frédéric Dagnet, Grand Port Maritime de Marseille, France

#### Mission:

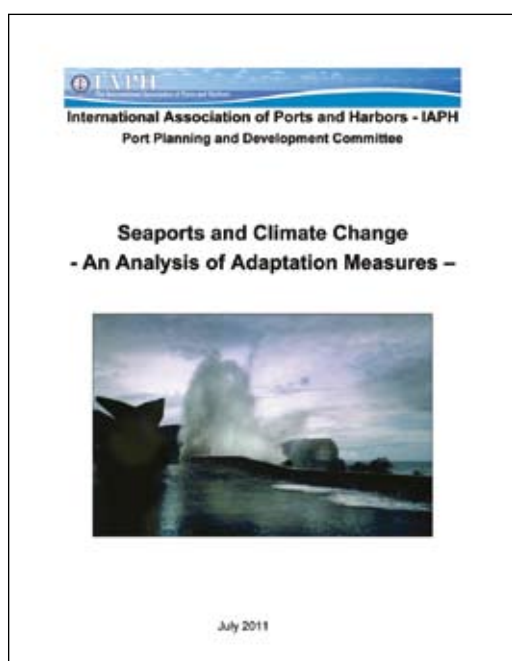
1. Provide information concerning the latest developments in technology and the implications to ports for information processing and flows that are required to facilitate the movement of cargo and ships.
2. Monitor developments at international organisations, which might affect trade facilitation of the ports industry and provide information concerning positions to be taken by the association.

### Work plan:

- Monitor and report developments of trade facilitation and port community systems discussed and resolved in international organisations such as WCO, UN/CEFACT etc.
- Complete the PCS benchmark study in remaining ports and extend it to African and American ports with IAPH budgetary support.
- Launch a study about the possible co-operation between ports towards PCS standards and interoperability.
- Propose a full working session on PCS for the 2013 IAPH World Ports Conference in Los Angeles.
- Monitor and study the maritime regulation impact on PCS evolution (UN directives, FAL Convention, IMO).
- Prepare IT Award 2013.

# Easy access to IAPH technical committee proceedings

**Technical committee reports and databases mentioned here can be accessed and downloaded from the IAPH website**



The report contains useful links to best practices of water quality programmes implemented in advanced ports.

## **Seaports and Climate Change - An Analysis of Adaptation Measures by the Port Planning & Development Committee**

Project leader: Wolfgang Hurtienne, chair of the committee

This report focuses on adaptation measures at ports against the consequences of climate change after estimating climate change impacts on ports. The main items covered by the report are:

- Climate change impacts on seaports
- Climate change sensitivity of port assets and adaptation measures of:
  - ▶ Basic port infrastructure
  - ▶ Operational port infrastructure
  - ▶ Port superstructure
  - ▶ Port equipment

This report can be used as a guideline for port authorities and terminal operators who plan adaptation measures against climate change.

## **Port Community Systems Benchmark Survey by the Trade Facilitation & Port Community Systems Committee**

Planned and conducted by the project team of committee members

The report contains the results of a benchmark survey on port community systems introduced in ports in the world. The project team comprised experts and committee members. They made on-site surveys of 13 advanced systems at the selected member ports, focusing on the following 13 elements: background, establishment, services, operational model, business model, technology, security, change management, legal framework, standards, benefits, lesson learned and future plans.

This report offers a useful tool for ports when they are planning to establish port community systems. In the coming work period, the committee plans to expand its geographical coverage by carrying out additional on-site surveys in other parts of the world.

**W**hen an IAPH Technical Committee completes a project, it publishes a final report or database. IAPH members can access these outcomes online by downloading them for free at:  
<http://www.iaphworldports.org/Library.aspx>

Three reports were published by the Port Environment Committee, Port Planning & Development Committee and Trade Facilitation & Port Community Systems Committee between July 2010 and June 2011. These are:

## **Report on the Survey Results of Water Quality Issues in Ports, by the Port Environment Committee**

Project leader: Dov Frohlinger, committee member, Israel Ports Development & Assets Co Ltd.

This report analyses the results of a questionnaire survey sent out to IAPH member ports about port water quality issues in the following six categories:

- Water quality programmes in port
- Regulatory requirements on port water quality
- Monitoring water quality
- Publication of information and data
- Water circulations or flow regime issues
- Water intake in port basin



# The climate story so far



IAPH • PORT ENVIRONMENT COMMITTEE

# WPCI

## An overview of the past year's activities for WPCI

The World Ports Climate Initiative, which IAPH committed to supporting in close co-ordination with its Port Environment Committee, launched its fight to reduce greenhouse gases (GHGs) in November 2008. Four projects are already launched or in the process of implementation and the remaining four projects are currently being readied for implementation progress. For details of all the WPCI projects, go to: [www.wpci.nl](http://www.wpci.nl)

### Projects launched and/or in operation

- **Air Quality & Greenhouse Gas (GHG) Tool Box**

The web-based IAPH Tool Box for Clean Air Programs, which provides valuable information to reduce air pollution in port areas, was expanded to include GHG mitigation measures. This was in response to increased concerns of the effects of global climate change from port communities across the world. To access the Tool Box, go to: <http://iaphtoolbox.wpci.nl/index.html>



- **Guidance Document of Carbon Footprinting for Ports**

The WPCI Carbon Footprinting Work Group led by Port of Los Angeles released a guidance document that serves as a reference for ports intending to develop or improve their GHG emissions inventories. For access to the guidance document, go to: [www.wpci.nl/docs/presentations/PV\\_DRAFT\\_WPCI\\_Carbon\\_Footprinting\\_Guidance\\_Doc-June30-2010\\_scg.pdf](http://www.wpci.nl/docs/presentations/PV_DRAFT_WPCI_Carbon_Footprinting_Guidance_Doc-June30-2010_scg.pdf)

A case-study example of the CO<sub>2</sub> Calculator at Port of Los Angeles was presented at the IAPH Busan meeting in May 2011. To access this study, go to: [www.iaphworldports.org/LinkClick.aspx?fileticket=k2ZQ1D2vHqI%3d&tabid=4865](http://www.iaphworldports.org/LinkClick.aspx?fileticket=k2ZQ1D2vHqI%3d&tabid=4865)



- **Onshore Power Supply (OPS)**

The OPS Working Group led by Port of Gothenburg released a website in 2010 to act as a guidance tool for ports planning to implement OPS to reduce emission of pollutants and GHG in their ports. To access the website, go to <http://ops.wpci.nl/>

- **Environmental Ship Index (ESI)**

The ESI Project Team lead by Port of Rotterdam established a scheme to reduce ships' emission of polluted air and GHGs using a universal environmental index to measure ships' emissions performance. Participating ports take the role of incentive-providers for ships with a good ESI score. ESI started its programme in January 2011 after setting up its website in November 2010. More than 240 ships and seven ports have already joined the programme as of the end of June 2011. To access the website, go to <http://esi.wpci.nl>

## Projects in preparation

- **Cargo Handling Equipment**

The aim of this project is to consider ways to reduce emissions and GHGs from cargo handling equipment in the port area. The project team will collect best practice examples in advanced ports that have introduced low emission and high-efficiency equipment for cargo handling. To access the presentation, go to [www.wpci.nl/projects/cargo-handling\\_equipment.php](http://www.wpci.nl/projects/cargo-handling_equipment.php)

- **Sustainable Lease Agreement Template**

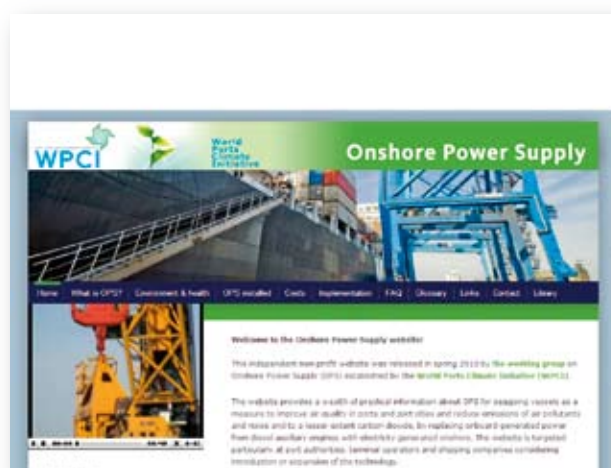
The Lease Agreement Template includes a sustainability approach in lease contracts for ports' tenants with the requirements related to control measures to reduce air pollution and GHGs from tenants' facilities. The project team will prepare model templates of lease contract for ports' tenants.

- **Intermodal Transport**

Intermodal Transport using multimodal transportation is regarded as a most efficient way to transport cargoes whilst reducing transportation costs and air emissions, including GHGs. The project team led by Port of Amsterdam will collect and summarise best practice examples of modal shift with relevant strategies introduced in the world's ports. To access the presentation, please go to [www.wpci.nl/docs/presentations/Intermodal-Egbertsen.pdf](http://www.wpci.nl/docs/presentations/Intermodal-Egbertsen.pdf)

- **LNG Fuelled Vessels**

This project was recently added to the WPCI portfolio in May 2011. It considers the feasibility of using LNG as a ship's fuel due to its low emission of polluting gases and particulates. The project team will prepare guidelines for safety procedures and facilities development for the supply of LNG fuels to ships at ports. For access to the presentation, go to [www.iaphworldports.org/LinkClick.aspx?fileticket=IVbhmSf55Nk%3d&tabid=4865](http://www.iaphworldports.org/LinkClick.aspx?fileticket=IVbhmSf55Nk%3d&tabid=4865)





# Promoting IAPH

From Ports & Harbors magazine to Facebook, the organisation uses a number of promotional tools to reach its members and the wider ports and shipping industries

## Ports & Harbors magazine

IAPH publishes an official journal, Ports & Harbors, issued six times a year with editorial input from IHS Fairplay. Ports & Harbors is a medium not only for IAPH members, but also for port professionals to exchange views and opinions, obtain useful information and share best practices concerning the wide-ranging issues faced by ports and the maritime industry. Comments on the magazine or submission of articles (or materials or stories) are always welcomed at [ph@iaphworldports.org](mailto:ph@iaphworldports.org)

## IAPH website

IAPH's website was revamped in March 2011 for the first time in five years and now has a new design and format. The decision to update the website was made in Savannah, USA in 2010.

It has many user-friendly features. For example, you can now view recent IAPH publications, including Ports & Harbors, in a digital book format - Cubook - which is also equipped with the following functions:

- Thumbnail viewer that enables you to see the layout of many pages at once
- Bookmarks taking you to a specific page of your interest
- Search engine enabling keywords search of all digital books on the site.

As before, IAPH members can access any page or document on the website with their user name and password. The statistics section was fully updated, presenting the most recent data on world container traffic, including port and country rankings, and on the world's seaborne trade by country and cargo.

## Press releases

To make IAPH's position clear on issues of interest and concern to the membership and to promote its activities as widely as possible, IAPH issued five press releases in the period from July 2010 to July 2011. These were:

- 'IAPH is very active on a regional basis' - The IAPH Americas Region met in Halifax, Canada in conjunction with the 99th Annual AAPA Convention (4 October, 2010)
- 'IAPH Asia/Oceania Region meets in Auckland, New Zealand' (21 February, 2011)



## Press releases (continued)

- 'IAPH adopts five resolutions on container safety, port infrastructure development, ESI, piracy and the Great East Japan Earthquake in Busan, Korea' (31 May, 2011)
- 'The 27th IAPH World Ports Conference in Busan, Korea, provides an excellent platform for sharing best practices and experiences' (31 May, 2011)
- 'IAPH advocates for stronger anti-piracy measures and contributes to relief fund for victims of the Japan Earthquake and tsunami' (29 June, 2011)
- 'Member Ports of IAPH welcome the International Maritime Organization's new mandatory measures to reduce greenhouse gases (GHGs) emissions from international shipping' (22 July 2011)

## IAPH on Facebook

Shortly after the Busan conference in May 2011 where active discussion took place on the ways and means to raise global awareness of IAPH and to promote the meaningful work it is doing, IAPH made its debut in the social networking media – Facebook. You are encouraged to visit the IAPH Facebook site and connect it to yours if you like it at: [www.facebook.com/pages/International-Association-of-Ports-and-Harbors/167148726682499?sk=wall](http://www.facebook.com/pages/International-Association-of-Ports-and-Harbors/167148726682499?sk=wall)

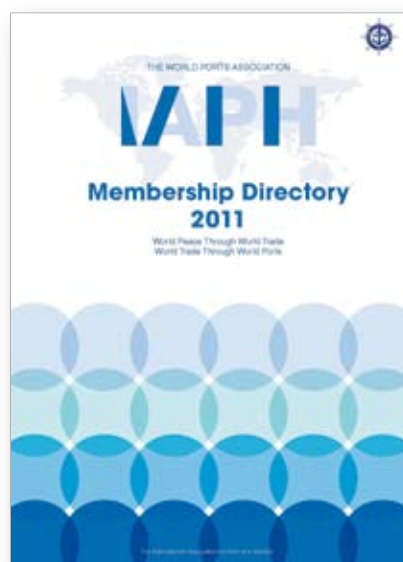
## IAPH Online Newsletter

The IAPH Online Newsletter has been sent to around 1,500 subscribers on a bi-weekly basis since 2002 and contains up-to-date association news, such as IAPH meetings, technical committee activities, member ports' news and other relevant information. Both members and non-members can receive the IAPH Online Newsletter. Please contact: [newsletter@iaphworldports.org](mailto:newsletter@iaphworldports.org)



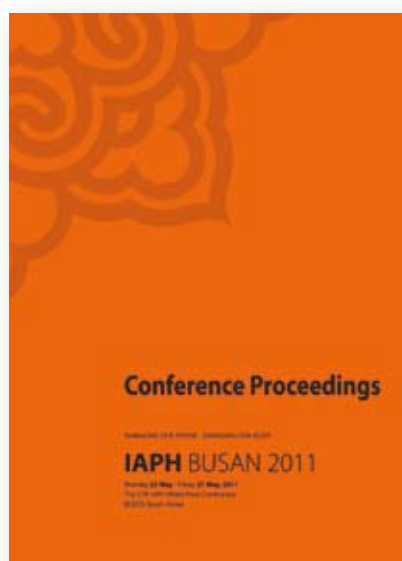
## IAPH Membership Directory

The IAPH Membership Directory provides easy-to-access information on all of our members, such as contact addresses and port cargo statistics, useful when networking among IAPH members.



## Conference Proceedings of the 27th IAPH World Ports Conference

The Conference Proceedings includes presentations of Working Sessions, photos and attendance list of the 27th IAPH World Ports Conference in Busan, Korea. To download, please visit: [www.iaphworldports.org](http://www.iaphworldports.org)





# 2010/2011 Accounts

## Balance Sheet

Appreciation of Japanese Yen against the major currencies during the year (132.0 to 107.9 Yen/Euro, 92.1 to 81.5 Yen/US\$, from the end of 2009 to 2010) affected IAPH accounts in an unfavorable manner. The devaluation of the security bonds in Euro and Sterling Lb in terms of Yen reduced the net worth of the association by almost ¥25.9M (\$337,000) although the ordinary accounts yielded a small surplus of ¥3.3M (\$43,000). As a result, the total financial net worth of IAPH as of the end of 2010 was ¥389.4M (\$5M), which was reduced by ¥20.3M compared to the previous year.

The financial position of the association, however, still remains healthy because of a large amount of inner reserves of more than \$4M.

## IAPH Budget for 2011/2012

The total revenues and expenses for 2011 are estimated at ¥142.3M (\$1.85M) and ¥144.1M (\$1.88M) respectively with a marginal loss of ¥1.8M (\$23,000) mainly because of appreciation of Yen against SDR, on which the membership dues are based. Those for 2012 are ¥119.1M (\$1.55M), ¥116.8M (\$1.5M) with a surplus of ¥2.3M (\$30,000).

Under the circumstances, the secretariat is determined to rein in spending that can be controlled but at the same time it should be reported that no serious financial problems are found in the association because a large amount of asset is reserved. IAPH can still support urgent and important projects and events when they need financial backing from the association.

## Statement of Revenues and Expenses

### General Accounts for 2011 & 2012 (Unit : Yen)


Items	2011 Budget	2012 Budget
1. Membership Dues	110,300,000	110,300,000
Regular Members	99,500,000	99,500,000
Associate Members	10,800,000	10,800,000
2. Interest Received	5,200,000	5,200,000
3. Other Incomes	26,825,000	3,600,000
Advertisement/Directory	2,200,000	2,200,000
Sales of Publication	1,400,000	1,400,000
Reversal of Allowance for Employee Retirement	23,225,000	-
<b>Revenues in this term</b>	<b>142,325,000</b>	<b>119,100,000</b>
1. Personnel Expenses	79,325,000	51,400,000
2. Non-Personnel Expenses	61,900,000	61,900,000
Office Expenses	13,700,000	12,700,000
Correspondence and Communications	2,000,000	2,000,000
Publication	19,500,000	18,600,000
Information Services	1,000,000	1,000,000
Overseas Travel Expenses	5,000,000	5,000,000
Social Expenses	500,000	500,000
Conference Expenses	4,000,000	2,250,000
Professional Services	2,050,000	2,050,000
Miscellaneous	1,000,000	1,000,000
IAPH Liaison Work	10,150,000	9,800,000
Technical Committee Support	3,000,000	7,000,000
3. Other Expenses	2,900,000	3,500,000
<b>Expenses in this term</b>	<b>144,125,000</b>	<b>116,800,000</b>
<b>Surplus for the period</b>	<b>-1,800,000</b>	<b>2,300,000</b>

## Balance Sheet

as of December 31, 2009 and 2010

(Unit : Yen)			
Items	2010	2009	Difference
<b>I Assets</b>			
<b>Current Assets</b>	106,545,409	148,130,622	-41,585,213
Cash and Deposits	103,064,999	144,165,108	-41,100,109
Petty Cash	29,481	65,373	-35,892
Ordinary Deposits	18,507,518	51,859,735	-33,352,217
Fixed Deposits	84,528,000	92,240,000	-7,712,000
Accrued Revenues	2,753,352	3,209,596	-456,244
Other Current Assets	727,058	755,918	-28,860
<b>Fixed Assets</b>	342,282,263	312,706,622	29,575,641
Specified Fixed Assets	60,747,740	54,875,855	5,871,885
Retirement Allowance Fund	51,435,510	45,383,100	6,052,410
IAPH Training Scholarship Fund	3,281,818	3,462,343	-180,525
Akiyama Prize Fund	6,030,412	6,030,412	-
<b>Other Fixed Assets</b>	281,534,523	257,830,767	23,703,756
Fixture and Equipment	64,176	82,320	-18,144
Investment Securities	277,728,364	254,006,464	23,721,900
Leasehold Deposits	3,741,983	3,741,983	-
<b>Total Assets</b>	<b>448,827,672</b>	<b>460,837,244</b>	<b>-12,009,572</b>
<b>II Liabilities</b>			
<b>Current Liabilities</b>	7,951,566	5,696,639	2,254,927
Accounts Payable	3,458,344	3,588,668	-130,324
Deposits Received	980,419	842,987	137,432
Deferred Revenues	3,027,329	787,710	2,239,619
Reserve for Wages and Allowances	485,474	477,274	8,200
<b>Fixed Liabilities</b>	51,435,510	45,383,100	6,052,410
Reserve for Employee Retirement	51,435,510	45,383,100	6,052,410
<b>Total Liabilities</b>	<b>59,387,076</b>	<b>51,079,739</b>	<b>8,307,337</b>
<b>III Net Worth</b>			
Restricted Net Worth	6,030,412	6,030,412	-
Other Net Worth	383,410,184	403,727,093	-20,316,909
<b>Total Net Worth</b>	<b>389,440,596</b>	<b>409,757,505</b>	<b>-20,316,909</b>
<b>Total Liabilities and Net Worth</b>	<b>448,827,672</b>	<b>460,837,244</b>	<b>-12,009,572</b>

# Report of the Independent Auditors



Ernst & Young ShinNihon LLC  
Hibiya Kokusai Bldg.  
2-2-3 Uchisaiwai-cho  
Chiyoda-ku, Tokyo, Japan 100-0011  
Tel: +81 3 3503 1100  
Fax: +81 3 3503 1197

## Report of Independent Auditors

The Board of Directors of  
the International Association of Ports and Harbors

We have audited the accompanying balance sheet of the International Association of Ports and Harbors (the "Association") as of December 31, 2010, the related statement of changes in net worth and the inventory of property (collectively, the financial statements) and the statement of revenues and expenses for the year then ended. These financial statements and the statement of revenues and expenses are the responsibility of the Association's management. Our responsibility is to express an opinion on these financial statements and the statement of revenues and expenses based on our audit.

We conducted our audit in accordance with auditing standards generally accepted in Japan. Those standards require that we plan and perform the audit to obtain reasonable assurance about whether the financial statements and the statement of revenues and expenses are free of material misstatement. An audit includes examining, on a test basis, evidence supporting the amounts and disclosures in the financial statements and the statement of revenues and expenses. An audit also includes assessing the accounting principles used and significant estimates made by management, as well as evaluating the overall financial statement presentation. We believe that our audit provides a reasonable basis for our opinion.

In our opinion,

- (1) the financial statements referred to above present fairly, in all material respects, the financial position of the Association at December 31, 2010 and results of changes in net worth for the year then ended in conformity with the accounting principles and practices for public-interest corporations generally accepted in Japan; and
- (2) the statement of revenues and expenses referred to above presents fairly, in all material respects, the results of revenue collected and expenses paid by the Association applicable to the 2010 fiscal year ended December 31, 2010 in conformity with the guidance for the financial reporting of public-interest corporations (issued on March 23, 2005).

We have no interest in the Association which should be disclosed in compliance with the Certified Public Accountants Act of Japan.

*Ernst & Young ShinNihon LLC*

February 18, 2011

A member firm of Ernst & Young Global Limited

# Chair of the Finance Committee

Dear Sir,

As Chair of the Finance Committee it is my privilege to present the Settlement of the General Accounts for 2010 to the Executive for adoption and convey some general overview comments on the results achieved last year.

The prudent management of the association financial affairs and generally working to the budgetary expectations during the Global Economic Crisis has been a key to the satisfactory overall results achieved in such a challenging environment. The work to reduce our exposure to undue currency movements is to be commended, and will continue to be a priority for the foreseeable future. With IAPH membership covering diverse countries from across the globe, there will always be an exposure to exchange rates fluctuations of membership dues particularly as they are linked to the SDR's and Yen cross rate.

Despite the financial pressures on the association it has continued to run smoothly, and the activities of the Secretary General have met member's expectations whilst ensuring the long-range prospects for self-sufficiency of the association are not compromised. The financial reports have been appropriately examined by the auditors and their report is also attached with no adverse commentary.

I have again noted as in previous years, the under-spending relative to budget allocations and more particularly in the Technical Committee area of work. This is disappointing given the Technical Committee work of the association is one of the key areas where the true benefits can be appreciated by the wider membership and all ports have an opportunity to participate by sharing knowledge and experiences at the highest levels. I fully support the continuing initiatives to advance the Technical Committees and their work programmes.

The Secretary General's detailed comments are an accurate reflection of the individual areas in the accounts and highlight the work of the Secretariat in a number of vital areas, which include the firm control of discretionary spending and costs. Of note, and I think worthy of further commentary, is the treatment of the extraordinary expenses this term given their quantum. The sum of Yen 47,145,299 is made up of two items, one being the loss on foreign currency exchange of Yen 15,714,028, which is essentially outside the control of the secretariat and the other, being the cost of purchasing a World Bank security bond. In many jurisdictions this item would not have been accrual accounted, through the Statement of Revenue and Expenses, and would have been a simple balance sheet adjustment from cash to fixed investments, with only movements in its fair value at balance date been reflected in the Revenue Statement. This was included in the Statement based on our new Auditors' advice. Accordingly the negative operating surplus of Yen – 43,831,940 does not truly reflect, in my view, the overall position.

Again, in concluding I would like to convey my personal thanks to the Secretary General and his staff on the diligent and careful management and leadership of the association through a difficult and challenging period.



**Garth Cowie**

Chairman of Finance Committee



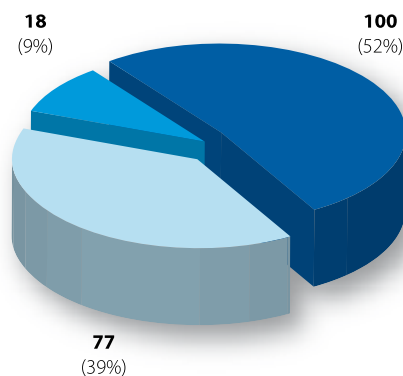


# Membership update

As of 30 April 2011, the Association comprises 342 members over 87 countries/economies. The breakdown for each membership is as listed below.



Asia continues to be the top performing region in terms of numbers for both regular and associate membership



## Regular Members: 195

From 1 January 2010 to 30 April 2011, seven new members joined and 18 members left. Current Regular Members in each region are as follows:

**Africa/Europe Region: 77**

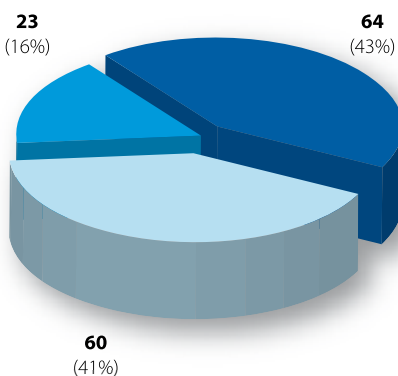
- Africa region: **23**
- Europe region: **54**

**Americas Region: 18**

- North America region: **11**
- South America region: **7**

**Asia/Oceania Region: 100**

- Asia region: **90**
- Oceania region: **10**



## Associate Members: 147

From 1 January 2010 to 30 April 2011, 17 new members joined and 13 members left. Current Associate Members in each region are as follows:

**Africa/Europe Region: 60**

- Africa region: **8**
- Europe region: **52**

**Americas Region: 23**

- North America region: **18**
- South America region: **5**

**Asia/Oceania Region: 64**

- Asia region: **61**
- Oceania region: **3**

● Africa/Europe ● Asia/Oceania ● Americas

# Your officers for the term 2011/2013



## **President**

**Geraldine Knatz, PhD**

Executive Director  
Port of Los Angeles, USA



## **Vice-Presidents**

### **1st Vice-President for Asia/Oceania Region**

**Grant Gilfillan**

Chief Executive Officer  
Sydney Ports Corp, Australia



### **2nd Vice-President for Africa/Europe Region**

**Santiago Garcia Milà**

Deputy Managing Director  
Autoritat Portuària de Barcelona, Spain



### **3rd Vice-President for Americas Region**

**Bill Johnson**

Port Director  
Port of Miami, USA



## **Immediate Past President**

**Gichiri Ndua**

Managing Director  
Kenya Ports Authority, Kenya



## **Conference Vice-President**

**Arley M Baker**

Deputy Executive Director, Communications  
Port of Los Angeles, USA



## **Secretary General**

**Susumu Naruse**

Secretary General, IAPH

# Executive committee as of 5 September 2011

## Asia/Oceania Region

(8 members)

### Richard Joost Lino

President Director  
Indonesia Port Corporation II, Indonesia

### LE Cong Minh

Director General  
Saigon Port Company Ltd, Vietnam

### Abdul Wahab Al Diwani

Director, UAE Marine Inspection and  
Survey Dept., National Transport  
Authority, Abu Dhabi, UAE

### Manjit Singh

2 Deputy Director (Policy)  
Maritime and Port Authority  
of Singapore, Singapore

### Beom Gou Kang

Director General for Port Policy  
Ministry of Land, Transport and  
Maritime Affairs, Korea

### Atsushi Fujii

Technical Officer  
Ports and Harbours Bureau Ministry  
of Land, Infrastructure, Transport  
and Tourism, Japan

### Martin Byrne

Chief Executive Officer  
Port Nelson Ltd., New Zealand

### Nasreen Haque

Chairperson  
Karachi Port Trust, Pakistan

## Africa/Europe Region

(6 members)

### Jean-Claude Terrier

President of the Executive Board and  
Chief Executive Officer  
Grand Port Maritime de Marseille,  
France

### Leonids Loginovs

Chief Executive Officer  
Freeport of Riga Authority, Latvia

### Bara Sady

Managing Director  
Port Autonome de Dakar, Senegal

### Eddy Bruyninckx

CEO  
Antwerp Port Authority, Belgium

### Dov Frohlinger

Chief Operating Officer  
Israel Ports Development and Assets  
Co Ltd, Israel

### Bisey Uirab

Chief Executive Officer  
Namibian Ports Authority, (NAMPORT),  
Namibia

## Americas Region

(4 members)

### Curtis J Foltz

Executive Director  
Georgia Ports Authority, USA

### Alberto Díaz

President  
National Port Administration, Uruguay

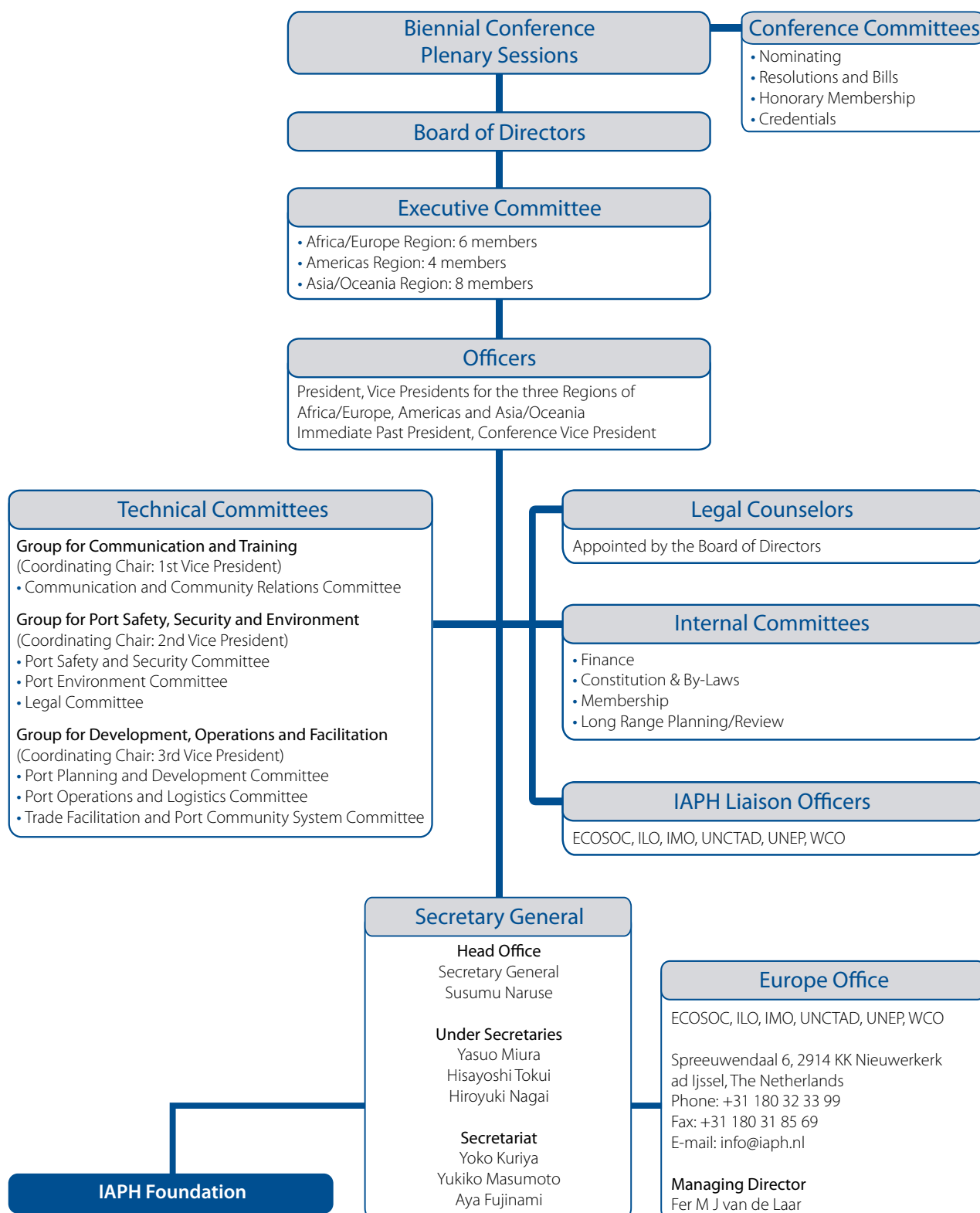
### Jerry A Bridges

Executive Director  
Virginia Port Authority, USA

### Ashley Taylor

President  
Point Lisas Industrial Port Development  
Corp, PLIPDECO, Trinidad and Tobago

# Structure of IAPH





# IAPH



## The International Association of Ports & Harbors

### Head Office

7th fl. South Tower, New Pier Takeshiba, 1-16-1 Kaigan, Minato-ku, Tokyo 105-0022, Japan

Tel: +81-3-5403-2770

Fax: +81-3-5403-7651

Url: [www.iaphworldports.org](http://www.iaphworldports.org)

Email: [info@iaphworldports.org](mailto:info@iaphworldports.org)

### Europe Office

Spreeuwendaal 6, 2914 KK Nieuwerkerk ad Ijssel, The Netherlands

Tel: +31-180-32-33-99

Fax: +31-180-31-85-69

Email: [info@iaph.nl](mailto:info@iaph.nl)