

IAPH



ANNUAL REPORT 2009-2010



About IAPH

The International Association of Ports and Harbors (IAPH) was founded in November 1955 under the motto “World Peace through World Trade, World Trade through World Ports”. Today, as the global alliance of the world port community, it represents some 200 ports and 140 port-related organisations of about 90 countries worldwide. The member ports together handle over 60% of the world’s sea-borne trade cargo and nearly 80% of global container traffic.

IAPH meets every two years at its World Ports Conference, the largest gathering of the world port community. Port executives and experts coming from all parts of the world exchange views and experiences over a range of issues and challenges. In addition, members of IAPH’s three regions – Africa/Europe, Americas and Asia/Oceania – meet regularly at Regional Meetings to discuss common issues in a regional context.

IAPH actively addresses critical issues facing the port industry through its technical committees. Currently, there are eight technical committees, respectively tasked to study implications and recommend policies and measures in such areas as port safety, security, environment, development and IT application. IAPH also proactively plays a significant role in tackling global issues at maritime-related UN agencies and other international organisations. For this, IAPH is especially granted non-governmental organisation consultative status by ECOSOC, ILO, IMO, UNCTAD, UNEP and WCO.

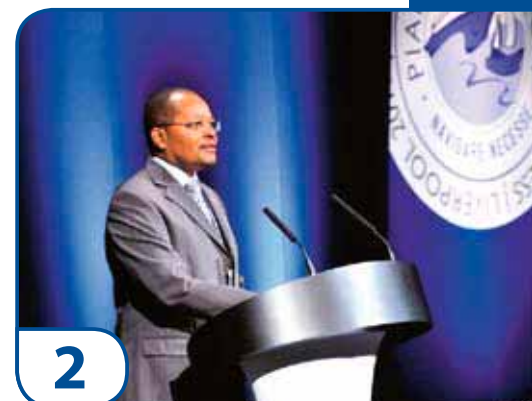
IAPH will continue to play a pivotal role as a unique global forum of the port industry in strengthening co-operation and sharing experiences among the world’s ports. Moreover, to effectively deal with many global issues, IAPH will also actively collaborate with other international organisations for the sustainable development of the world economy.



**WORLD PEACE THROUGH WORLD TRADE
WORLD TRADE THROUGH WORLD PORTS**

Contents

President's Message	2
Overview of 2009/2010	4
Port Forum in Hamburg	6
Port Forum in Bandung	8
Port Forum in Savannah	10
Africa/Europe Regional Meeting ..	12
Asia/Oceania Regional Meeting	13
Mid-Term Board Meeting	14
Resolution on Piracy	15
Technical Committee Activities ...	16
Technical Committee Reports	19
WPCI Report	20
Publications	22
Membership	24
Accounts	26
Executive Committee Members ...	30
Secretariat	32
IAPH Structure	33



2



12



16

The challenges we face



President Ndua addresses delegates at the PIANC Congress in Liverpool, UK

Throughput of the world's ports has finally picked up in the first half of 2010. After the unprecedented sharp decline in 2009, container throughput at the world's major ports experienced strong increases ranging from 10 to 30% in the first half of this year. Although the world economy is projected to grow by 4.5%, and consequently growth in trade will increase by approximately 9% in 2010, these growth rates are premised on decreased levels encountered in 2009. In a sense, we shall still be below the performance levels realised in 2008.

As the shipping industry is expected to offer high-quality service with zero tolerance of delays due to suppressed freight rates, ports must provide the necessary infra- and super-structural facilities to ensure that ships are serviced speedily. Moreover, if projected trade growth of 6.3% for 2011 is realised, the volume of world trade will literally have bounced back to pre-recession levels. Hence, the need for systematic enlargement of container handling capacity guided by prudent assessment of growth – its pattern, consistency and sustainability – has to be satisfied.

There are two challenges that, although unrelated, will continue to hold back overall growth and maritime trade specifically. The impacts of terrorism and increased incidents of piracy on maritime trade are too obvious, resulting in longer transit times and higher insurance premiums. To this end, IAPH has adopted a resolution on piracy during the Mid-Term Board Meeting held on 9 June 2010 in Savannah, Georgia (see page 15). Furthermore, global warming has been placed high on the agenda of the maritime community; the World Ports Climate Initiative (WPCI) of IAPH will be a cornerstone in the campaign to achieve this desirable goal.

Lastly, I am delighted to commend this newly formatted Annual Report to all IAPH members. You can find all the decisions made and the activities performed by the Association during the last year in this concise report.

A handwritten signature in black ink, appearing to read 'Gichiri Ndua'.

Gichiri Ndua

IAPH President

Managing Director, Kenya Ports Authority



Looking back at 2009/2010

Secretary General Naruse reflects on IAPH's achievements and activities over the past two years



Susumu Naruse: "WPCI project teams have been vigorously tackling issues associated with climate change"

Our activities

Looking back over the past two years, members will no doubt remember a series of successful meetings and events. Port of Genoa hosted the IAPH World Ports Conference in May 2009, followed by the Africa/Europe Regional Meeting, which took place in Hamburg from 16 to 18 November 2009. The 10th Asia/Oceania Regional Meeting followed shortly afterwards in Bandung, Indonesia from 3 to 5 February 2010. The annual IAPH event, to which all members from across the globe were invited, took place in Savannah, Georgia, USA, from 7 to 9 June 2010.

Several meetings took place at this event: the Mid-Term Board Meeting and Technical Committee meetings, followed by an IAPH World Port Forum, which was open to the public.

A variety of issues were discussed by the Board of Directors and important decisions on financial and administration matters were made (page 12).

Technical Committees and WPCI

The Technical Committees met in Genoa, where they set their work plans for the 2009/2011 period. Since then, they have been working in accordance with these plans. The WPCI project teams have also been vigorously tackling issues associated with climate change. It should be noted that some final WPCI products are already available on the IAPH website (page 20).

PIANC Congress

The international waterborne transport association PIANC, one of the most important sister organisations of IAPH, held its 125th Anniversary Congress in Liverpool, UK, in May 2010. Both the President and Secretary General of IAPH were invited to this once-every-four-years event, and President Ndua delivered a thoughtful keynote speech at the opening ceremony.

Both PIANC and IAPH confirmed an MoU that was signed in 2001 and agreed to further strengthen the ties between both organisations to tackle issues of mutual interest.

Membership

Our regular and associate members constitute the very foundation of IAPH. As of 20 May 2010, the Association comprised 349 members in 88 countries or economies (page 24). From among this number we have been pleased to welcome the following six regular members to the association during the past year:

- Philippine Ports Authority (The Philippines)
- Port of Miami (USA)
- Brunsbüttel Ports GmbH (Germany)
- Port of San Diego (USA)
- Baku International Trade Sea Port (Azerbaijan)
- Transinvestservice - TIS (Ukraine)

Settlement of Accounts

The IAPH General Account for 2009 was closed with a surplus of ¥19M (approximately \$200,000). While the total revenue of ¥145M was a little short of the ¥149M budget, actual spending of ¥126M was limited to 85% of the budgeted sum of ¥147M.

This was partly due to the financial efforts of the Secretariat and partly because funds allocated to Technical Committee Support were not fully utilised. The financial documents, along with the reports of the independent auditors and

the chair of the IAPH Financial Committee were submitted to the Board of Directors where they were unanimously approved (page 26).

New Executive Committee Members

Regional elections were called to fill one vacancy within the Executive Committee from the Asia/Oceania Region and three vacancies from the Americas Region. As the result, four persons were elected as new EXCO members (See page 31).

Secretariat

Mr Susumu Naruse succeeded Dr Satoshi Inoue as the Secretary General of IAPH on 1 December 2009. He was appointed to the position by the Board of Directors at the IAPH World Ports Conference in Genoa in 2009.

A new member of staff also joined the secretariat in October 2009 to fill a vacancy created by an employee who has retired.

Future Meetings

IAPH members will meet again in Busan, Korea, at the 27th IAPH World Ports Conference in May 2011. The following IAPH World Ports Conference will be in 2013, hosted by the Port of Los Angeles. Israel was selected in Savannah to be the venue for the next Mid-Term Board Meeting in 2012 (page 14).



2009 and 2010 were busy years for IAPH members... from left to right: in Bandung, Indonesia; President Ndua speaks in Savannah, USA; and a chance to talk in Hamburg, Germany

Europe meets Africa

Economy and environment were the broad topics at this IAPH event in late 2009



The sister port relationship between Hamburg and Tanzania was discussed

The Africa-Europe Port Forum was held at the Deutsches Zollmuseum in Hamburg, Germany on 17-18 November 2009 in conjunction with the Africa/Europe Regional Meeting and was hosted by Hamburg Port Authority. The forum comprised three sessions dealing with the economy and the environment.

Session 1 - Hamburg Upstream/

Downstream focused on the sister port affiliation between the Hamburg Port Authority and the Tanzania Ports Authority. A presentation was made on the host, Hamburg Port Authority, focusing on the rail network connection to its hinterland, as well as an interesting view of what the markets expect and require from the Port of Hamburg and its readiness to respond to such expectations and requirements.

Session 2 - Europe and Africa was moderated by IAPH's Third Vice President, Santiago Garcia Milà, and offered several stimulating presentations on such hot topics

as European legislation decision-making processes, medium to long-term European container port market analysis, the Container Terminal Quality Indicator (CTQI), a shipowner's view of supply chain efficiency, ESPO's guide to awarding port concessions and French port reform.

Session 3 - World Ports Climate Initiative

was moderated by Dr. Geraldine Knatz, WPCI Chair, and a presentation on four of the projects in progress was made by a representative of each lead project port. These were:

- Carbon Footprinting (Port of Los Angeles)
- Environmental Ship Index (Port of Rotterdam)
- Onshore Power Supply (Port of Gothenburg)
- Intermodal Transport (Port of Amsterdam)

During this session, a Guidance Document for Carbon Footprinting serving as a reference for ports looking to develop or improve their greenhouse gas emissions inventories was officially released.

Programme: 17 & 18 November 2009

Session 1 - Hamburg Upstream / Downstream

Sister Port Relationship Dar es Salaam - Hamburg: Example for Good Co-operation between a European and an African Port

- Ephraim Mgawe, Tanzania Port Authority
- Manfred Reuter, Hamburg Port Authority

Railway Hinterland Traffic of the Port of Hamburg

- Sebastian Jürgens, Hamburger Hafen & Logistik AG

Hamburg Port Authority - Well Equipped to Face Future Challenges?

- Jens Meier, Hamburg Port Authority

Session 2 - Europe and Africa

Moderator: Santiago Garcia Milà, 3rd Vice President

European Safety & Security Policies

- Marten Koopmans, EC, Brussels

European Ports: Is It Much Fun for Investors?

- Theo Notteboom, ITMMA, Antwerp

The Changing Role of Port Authorities from Landlord to Economic Strategist

- Kieran Ring, Global Institute of Logistics

Supply Chain Efficiency - A Shipowner's View

- Peter Hinchliffe, ICS, London

Port Concessions: Towards a European Code of Practice

- Martina Fontanet, ESPO

Port Reform in France

- Bruno Vergobbi, Union des Ports de France

Session 3 - World Ports Climate Initiative (WPCI)

Moderator: Geraldine Knatz, Chair WPCI

Carbon Foot Print (CFP)

- Ralph Appy, Port of Los Angeles

Environmental Ship Index (ESI)

- Tiedo Vellinga, Port of Rotterdam

On-shore Power Supply (OPS)

- Susann Dutt, Port of Gothenburg

Intermodal Transport

- Jan Egbertsen, Port of Amsterdam

Environmental Policy Drivers: Is ESI One of Them?

- Lars Robert Pedersen, Maersk Line, Denmark

Strategies for Environmental Management

- Eirik Nyhus, Det Norske Veritas

A Guidance Document for Carbon Footprinting was released - a reference for ports looking to develop or improve their greenhouse gas emissions inventories



PowerPoint presentations from the Hamburg Port Forum are available online at:
http://www.iaphworldports.org/members_only/library/Hamburg2009-forum.html

Focus on emerging markets

Development and innovation is improving Asian ports, members were told in Bandung, Indonesia



A one-day Port Forum with the theme *Improving Ports Productivity, Emerging Markets* was hosted by Indonesia Port Corporations I, II, III and IV at the Savoy Homann Bidakara Hotel, Bandung, Indonesia, on 4 February 2010. It was held in conjunction with the Asia/Oceania Regional Meeting.

The event comprised three sessions addressing world economy, climate change and regulatory trends, and included an interesting insight into the region's port scenes, especially current projects and activities.

Session 1 – Regulatory Framework and Port Strategies gave details of a number of case studies relating to the port reform process in Indonesia. It also considered some huge port development projects now underway in Vietnam and Sri Lanka, how an Indonesian river port is overcoming siltation issues, and explored ways to reduce maintenance dredging costs.

Session 2 – Economic Recovery and Emerging Trends in the Maritime Sector highlighted some of the challenges faced by the region's ports. These included Indonesia's productivity improvement programme and the critical importance of pilotage along the 900km-long Straits of Malacca and Singapore. It also

considered: how world ports performed in an adverse economic environment that shrank drastically in a matter of a year; using the OECD's composite leading indicator (CLI) against container throughput at major IAPH member ports; the Indonesian National Shipowners' Association's view of their member companies looking to bigger ship sizes and rationalising port calls; and a case study on the container terminal development at Sydney Ports Corporation's Port Botany.

Session 3 – Marine Environment and Safety

included several presentations on Japanese ports' efforts to address global warming via modal shift, replacing diesel engines with hybrid-powered equipment, Onshore Power Supply, and the introduction of renewable sources of energy. Indonesia's state-owned dredging enterprise RUKIND was also discussed. Also on the agenda was Australia's national ballast water management system in the context of the IMO's International Convention for the Control and Management of Ships' Ballast Water and Sediments, which provides standards for ballast water treatment. Japanese ship and port security arrangements were also considered, and finally a sobering climate-change scenario was painted by a representative of Indonesia Port Corporation I. He presented the findings of research carried out in 2007 suggesting that a rise in the sea level may cause ports in Jakarta to disappear by 2050.

Programme: 4 February 2010

Session 1 – Regulatory Framework and Port Strategies

Regulatory Framework Change in Indonesia

- Sunaryo, Director General of Sea Transportation, Government of Indonesia

Port Development Strategy in Vietnam

- Ho Kim Lan, Saigon Port Co Ltd, Vietnam

Port Development Strategy

- Priyath B Wickrama, Sri Lanka Ports Authority

Pelindo III's Projects

- Husein Latief, Indonesia Port Corporation III

Port Reform

- Paper submission by Jens Madsen, Managing Director, Ports of Auckland Ltd, New Zealand

Session 2 – Economic Recovery and Emerging Trends in the Maritime Sector

Hub Port for Indonesia: A National Logistic Issue

- RJ Lino, Indonesia Port Corporation II

Voluntary Pilotage in the Straits of Malacca & Singapore for the Sake of Safety and Environmental Protection

- Bambang Eka Cahyana, Pelindo I, Indonesia

Impact of Economic Crisis on Ports

- Masahiko Furuichi, Port & Airport Research Institute, MLIT, Japan

Container Terminal Development in Botany Bay

- Tony Navaratne, Sydney Ports Corporation, Australia

New Trends of Maritime Transport

- Tamizi Amir, PT Samudera Indonesia

Session 3 – Marine Environment and Safety

Efforts to Address Global Warming at Ports in Japan

- Hiromi Kado, Ministry of Land, Infrastructure, Transport & Tourism, Japan

Dredging Issues

- Lukman Priyadi, PT Rukindo (Persero), Indonesia

Ballast Water Management

- Shane Hobday, Sydney Ports Corporation, Australia

Port Security – Japan's Experience

- Hiroshi Horikawa, The Ports and Harbours Association of Japan

Climate Change & Indonesian Ports – Adaptation towards a Rising Sea Level

- Ir. H Abdul Razak Manan, Commissioner of Indonesia Port Corporation I

“A sobering climate-change scenario that the rise in sea level may cause ports in Jakarta to disappear by 2050”



The one-day forum attracted members from across the Asia and Oceania region

PowerPoint presentations from the Bandung Port Forum are available online at:

http://www.iaphworldports.org/members_only/library/Bandung2010-forum.html

Meeting of minds in Georgia

Economy is on the up, agreed members in Savannah, USA



Left: President Ndua thanks GPA's chairman, Stephen Green

Economic recovery in maritime trade was the theme of a one-day Port Forum hosted by the Georgia Ports Authority. The event was held in conjunction with the IAPH Mid-Term Board Meeting at the Savannah Marriott Riverfront in Georgia, USA on 8 June, 2010. Four sessions revolved around this theme at a time when world economy was beginning to show signs of recovery. The first three sessions were moderated by Peter Leach, senior editor at the *Journal of Commerce*, with session four moderated by Dr Geraldine Knatz, chair of WPCI.

Session 1 – Transportation Forum: Trends and Economic Projections

provided interesting insights into how the economic slowdown has impacted the transport industry and changed the way logistics providers do business. A panel of speakers, including an economist and representatives for the truck and rail operator sectors, agreed that the global economic outlook is now bright and strong. From a regional standpoint, the panel also highlighted the fact that the US economy is steadily recovering, as seen by an increase in consumer spending.

Session 2 – Today's Trends for USA Exports/Imports: What's on the Horizon?

turned out to be a stimulating session where members heard from a maritime economist and a shipper of wood-based products who highlighted the frustrations of having to book shipments far in advance. A shipping executive explained why his company is rationalising its tonnage and port calls, adding that box shipping is a round-trip enterprise.

Session 3 – Protecting Maritime Trade began with a presentation of the US Coast Guard's layered

approach to security, and included its work with the many agencies involved in information and intelligence gathering to achieve maritime domain awareness, as well as an update on the Transportation Worker Identification Credential (TWIC). Members were brought up to date on future development plans for the Suez Canal, including increasing the length of bypasses to reduce transit times and deepening the western bypasses to enable vessels with a draught of up to 16m (52ft) to use the canal. This was followed by a comprehensive overview of Port of Rotterdam's security programme, which focused on container scanning and security. The port representative explained that, by 2013, Rotterdam plans to have in operation at all large container terminals: drive-through x-ray scans; nuclear detection gates; optical fibre connection to customs; and a container unpacking facility.

Session 4 – World Ports Climate Initiative: Greening the Supply Chain

updated members on the current status of the initiative's projects. The Environmental Ship Index (ESI), Onshore Power Supply (OPS), and development of the Carbon Calculator, which is being developed under the auspices of WPCI's Carbon Footprint project, were all covered in detail. The final presentation, *Sustainability in the Retail Supply Chain*, highlighted the influence retailers have over how goods are shipped and ultimately how this industry has helped to reduce both packaging and emissions in the supply chain. Members were also reminded that ports are just one part of a much wider logistics network that is constantly increasing as traditional superpowers make way for emerging economies. More focus is also being placed on environmental protection and customer-focused business, members were told.

Programme: 8 June 2010

Session 1 - Transportation Forum: Trends and Economic Projections

(Moderator: Peter Leach, Senior Editor, *Journal of Commerce*)

Are We in a Recovery Period?

- Jack Gross, VP and General Manager of International Supply Chain, Schneider Logistics Inc, USA

Union Pacific Economic Recovery and Maritime Trade

- John Kaiser, Vice President and General Manager-Intermodal, Union Pacific

Trends and Economic Projection

- Walter Kemmsies, Chief Economist, Moffatt & Nichol

Trends in the Intermodal Supply Chain

- Mike McClellan, VP Intermodal and Automotive, Norfolk Southern

Lunchtime Keynote

Finding Business in a Down Economy and Moving Forward with Recovery: JCB's Perspective

- Ken Bianco, VP of Commercial Operations, JCB

Session 2 - Today's Trends for USA Exports/Imports: What's On the Horizon?

Recent Changes for Exporters

- Terry Bunch, Director, Logistics & Customer Service, Rayonier

Today's Trends for USA Exports/Imports

- Bill Ralph, Maritime Economist, R K Johns & Associates

Today's Trends for USA Exports/Imports

- Mike White, President, Maersk North America

Session 3 - Protecting Maritime Trade

The Effective Role of the Suez Canal in the World Seaborne Trade

- Ahmed Mohamed Mahmoud El Manakhli, Director of Planning & Research and Studies Department, Suez Canal Authority

From Secure Ports to Secure Maritime Trade

- Peter W Mollema, Director, Port Planning and Development, Port of Rotterdam

Protecting Maritime Trade: Layered Approach

- Commander David Murk, Chief, Cargo and Facilities Division, US Coast Guard

Session 4 - World Ports Climate Initiative: Greening the Supply Chain

(Moderator: Geraldine Knatz, Executive Director, Port of Los Angeles and Chair of WPCI)

Sustainability in the Retail Supply Chain

- Casey C Chroust, Executive Vice President, Retail Operations, Retail Industry Leaders Association (RILA)

Air Emissions and Environmental Ship Index (ESI)

- Guido van Meel, Senior Advisor, Port of Antwerp

Onshore Power Supply (OPS) Project

- Fer van der Laar, Managing Director, Europe Office, International Association of Ports and Harbors

Carbon Calculator

- Lisa Wunder, Environmental Specialist, Environmental Management Division, Port of Los Angeles, USA

Innovation & Opportunity in Recession

- Peter Boyd, Director of Operations, Carbon War Room

Ports are just one part of a much wider logistics network that is constantly increasing as traditional superpowers make way for emerging economies

PowerPoint presentations from the Savannah Port Forum are available online at:

<http://www.iaphworldports.org/2010SavannahDocuments/Port%20Forum/Savannah%20Port%20Forum.html>

Continents converge in Hamburg



The regional meeting considered ways to encourage more members to become active in the Technical Committees

IAPH members from the Africa/Europe Region met in Hamburg, Germany from 16-18 November 2009.

It was well-attended with nearly 100 members from 24 countries, mostly in Africa and Europe, participating. These members were welcomed by their host, Hamburg Port Authority. IAPH Officers, including the President, Vice Presidents and Secretary General, took this opportunity to hold their meeting on the afternoon of Monday, 16 November. The officers reviewed and discussed a number of important Association matters, including: the current status of membership and finance; Technical Committee activity; and future meetings, including the IAPH World Ports Conference in Busan, Korea in 2011. A delegation from Busan Port Authority attended this meeting to make a presentation on the conference.

The Africa/Europe Regional Meeting was also held in Hamburg, in the early evening of 17 November, under the chairmanship of Third Vice President Santiago Milà who is responsible for the region. Discussion included:

- Revival and rescheduling of the 'Port Study Tour for Promising Young Professionals' that was initially proposed as part of the IAPH 50th Anniversary in 2005, but has shown no significant sign of progress until now
- How to encourage more IAPH members to join in and contribute to the work of IAPH Technical Committees

The minutes of the Regional Meeting are available online at: http://www.iaphworldports.org/members_only/library/pdf/MinutesA-E_Hamburg2009.pdf



Bandung hosts Regional Meeting for Asia/Oceania



The correct procedure to select a new regional representative to the Executive Committee was discussed

On the morning of 5 February 2010, the Asia/Oceania Regional Meeting met under the chairmanship of Second Vice President Grant Gilfillan at the Savoy Homann Bidakara Hotel, Bandung, Indonesia. Thirty-nine IAPH members from nine countries in the region participated.

One major item on the agenda was the rules and procedure required to fill a vacancy in the IAPH Executive Committee caused by the departure of Mr Gilfillan. After discussion, it was decided that a call for election be made toward the end of February 2010, in which self-nomination of the region's Board Members – both Directors and Alternate Directors – would be sought.

It was also decided that the next Regional Meeting be held in Auckland, New Zealand, from 9-11 February 2011, thanks to a kind offer from Ports of Auckland.

Mr EH Lee of Busan Port Authority, Korea, made a short presentation at the meeting on the forthcoming 27th IAPH World Ports Conference to be held in Busan, South Korea from 23-27 May 2011. He gave details of the venue and basic framework of the overall event, and generated interest amongst attending delegates.

The minutes of the Regional Meeting are available online at: http://www.iaphworldports.org/members_only/Minutes_AsiaOceania_Bandung2010.pdf



Mid-Term in Savannah



Results from the regional elections were confirmed at the Mid-Term Board Meeting in Savannah

Forty IAPH members including 19 members of the Board of Directors, met at the Mid-Term Board Meeting hosted by Georgia Ports Authority, on the morning of 8 June 2010 in Savannah, Georgia, USA.

Secretary General Susumu Naruse presented a report on what the Association has achieved since the 26th IAPH World Ports Conference in Genoa in May 2009, including Settlement of Accounts for 2009. His report was approved by the Board of Directors.

The Board confirmed the outcome of the regional elections held since the conference in Genoa. Mr Richard Joost Lino, President Director of Indonesia Port Corporation II, was elected to represent the Asia/Oceania region. Further, Mr Bill Johnson, Port Director, Port of Miami; Mr Alberto Díaz, President, National Port Administration, Uruguay; and Mr Curtis J Foltz, Executive Director, Georgia Ports Authority, were elected to represent the Americas region.

The Board also approved the programme and registration fees proposed by Busan Port Authority who is hosting the 27th IAPH World Ports Conference from 23-27 May 2011 in Busan, Korea. Dates for future IAPH events as follows, with some details still subject to further confirmation:

• Africa/Europe Regional Meeting 2010

December 2010 in Arusha, Tanzania, in conjunction with PMAESA (Port Management Association of East & Southern Africa) and PAPC's (Pan African Ports Cooperation) Conference

• Asia/Oceania Regional Meeting 2011

9-11 February 2011 in Auckland, New Zealand, to be hosted by Ports of Auckland

• IAPH World Port Forum/ Mid-Term Board Meeting 2012

May 2012 in Jerusalem, Israel, to be hosted by Israel Ports Company (possible dates: 6-9, 13-16 or 20-23 May, 2012)

• 28th IAPH World Ports Conference 2013

Early 2013 in Los Angeles, USA, hosted by Port of Los Angeles

Most significantly, the Board of Directors unanimously adopted a resolution on piracy as proposed by Mr Frans van Zoelen, Chair of the IAPH Legal Committee, to demonstrate to the world maritime community IAPH's commitment to this critical issue (page 15). The resolution was then submitted to all friendly organisations with whom IAPH has been granted NGO consultative status and with whom IAPH has signed an MoU, as well as to news and media agencies. IMO responded quickly and favourably, welcoming and supporting IAPH's initiative. A new scheme – Financial Support for Technical Committees – was proposed and endorsed to extend financial assistance toward approved projects proposed by the Technical Committees.

The minutes of the Mid-Term Board Meeting are available online at: [http://www.iaphworldports.org/2010SavannahDocuments/MinutesBoard_2010\(final\).pdf](http://www.iaphworldports.org/2010SavannahDocuments/MinutesBoard_2010(final).pdf)

Resolution on piracy

The Board of Directors of the International Association of Ports and Harbors (IAPH) in Savannah, USA

BEING AWARE of piracy having turned into seafarers' principal source of anxiety and distress, and of the serious problems for world-wide trade as well as for the shipping industry as customers of the world ports, the International Association of Ports and Harbors (IAPH) wishes to support seafarers and stakeholders in the industry with the following resolution:

RECOGNIZING that piracy is not restricted to territorial and international waters bordering politically instable States such as Somalia, or to sea regions in the Gulf of Aden, but is a widely spread, "international" or global problem, IAPH is particularly concerned about the steeply increasing number of piracy incidents, the vastness of the sea area to be monitored by naval policing, the lack of enforcement and prosecution under international and domestic penal law, the growing brutality and boldness of modern pirates, the gradual spread of piracy controlled structures and hierarchies in politically unstable States, and the necessity to divert shipping routes which result in the increase of costs and air emissions as well.

MINDFUL of the high degree of political, legal and social complexity of the modern piracy phenomenon, and of a number of initiatives, ideas and calls which IAPH specifically wishes to support as well as of some measures and regulations that IAPH strongly wishes to advocate,

MINDFUL FURTHER of its responsibility as the voice of world ports, IAPH DECLARES its support for seafarers and stakeholders in the shipping industry, and

BEING AWARE of the limited leverage ports can take on the solution or mitigation of the devastating effects of piracy on the marine industry, IAPH nonetheless would like to invite stakeholders to convey their suggestions and ideas on how world ports can be of help to the industry.

MOREOVER IAPH

1. **CONDEMNS** piracy in all its manifestations and endorses naval protection by the international armed forces. However, IAPH believes arming or military training of civilian crews will only escalate violence in pirate encounters. The use of weapons should remain restricted to military staff on internationally agreed-on missions.
2. **ADVOCATES** that the various navies operating around the Horn of Africa and the Gulf of Aden region rotate the overall command over all navies in this sea region, thus raising efficiency and protective capacity.
3. **URGES** States to ratify all relevant international conventions, such as UNCLOS, Convention on the Suppression of Unlawful Acts (SUA and its amended 2005 version with resp. Protocols) and the Convention against Hostage Taking, in order to provide for an internationally uniform legal framework.
4. **CALLS** on States in the piracy affected regions to establish a common approach as to consistent domestic law structures that enable more stringent law enforcement and prosecution in their own jurisdictions.
5. **URGES** States in the Horn of Africa and Gulf of Aden regions to sign the Djibouti Code of Conduct and thus join in the efforts of establishing stable civil structures in Somalia.
6. **ENCOURAGES** States to hear piracy cases, imprison convicted pirates in their own prisons or detain those suspected of piracy related criminal acts for trial or extradition to other States.
7. **RECOMMENDS** to all ship operators to adhere to the International Maritime Organization's (IMO) Maritime Safety Committee Circulars, giving guidance as to Mitigating Piracy and Armed Robbery against Ships (MSC.1/Circ.1332 of 16 June 2009 and MSC.1/Circ. 1334 of 23 June 2009) and Information on Internationally Recommended Transit Corridors for Ships Transiting the Gulf of Aden (SN.1/Circ. 281 of 3 August 2009)
8. **ENCOURAGES** IMO and particularly its Maritime Safety Committee to continue their advisory efforts by compiling a manual of proven and effective defensive measures for the individual ship categories.
9. **ENDORSES** all efforts by the shipping community to provide professional post-piracy care for seafarers.

Technical Committee activities



Piracy was on the agenda at the Port Safety & Security Committee meeting in Savannah

Technical Committees, comprising eight different committees categorised in three groups, are regarded as the 'backbone' of IAPH. They are tasked to study a range of common-interest issues and concerns to the world port community. They are also assigned to prepare or propose IAPH 'position papers' and 'resolutions' on critical issues in maritime fields for submission to international agencies, including IMO, to advocate the principles of IAPH.

In Savannah, committees made the following progress in terms of their work plans for 2009/2011. For the full minutes of each committee, please access each 'committee room' on the IAPH website.

1. Group for Communication & Training (Group I)

1.1 Human Resources Development Committee

Chaired by Eddy Bruyninckx, Antwerp Port Authority, Belgium



Mission:

1. Provide a training programme for developing ports.

The Essay Contest: The themes of Essay Contests, both Busan Open Award and Akiyama Award, were decided. The winners will be announced at the IAPH World Ports Conference in Busan 2011.

IAPH Training Scholarship Programme: It was agreed that the programme should be modified in order to make it more applicable and usable for employees of IAPH's member ports.

1.2 Communication & Community Relations Committee

Chaired by Monica Bonvalet, Grand Port Maritime de Marseille, France



Mission:

1. Review and improve the internal and external communications of the Association.
2. Build a knowledge base for members on how to deal with community relations.

Streamlining IAPH publications: It was agreed that IAPH documents be published on a digital form-only principle, while some documents, such as the journal *Ports and Harbors*, will continue to be printed.

Website updates: A basic plan to improve the IAPH website to make it more user-friendly and open to the public was agreed. The new website will be completed in time for the IAPH World Ports Conference in Busan 2011.

2. Group for Port Safety, Security & Environment (Group II)

2.1 Port Safety & Security Committee



(LEFT) Chaired by Peter W Mollema, Port of Rotterdam Authority, The Netherlands, until 13 July 2010

(RIGHT) Chaired by Shane Hobday, Sydney Ports Corporation, Australia, from 14 July 2010

Mission:

1. Collect, interpret and summarise for the Association the latest relevant information concerning port safety and security requirements, initiatives and best practices.
2. Provide analyses and draft positions on port safety and security matters to be placed on the agenda of international organisations such as IMO, ILO, ISO, WCO and IALA.

Various maritime safety and security issues related to ports were discussed, including:

- Fumigated containers
- Berth zoning in ports for vessels with dangerous goods on board
- Port access and identification systems for security in port
- Secure trade and 100% scanning container requirement
- Piracy

2.2 Port Environment Committee

Chaired by David Padman,
Port Klang Authority, Malaysia



Mission:

1. Monitor trends in environmental areas that affect ports including but not limited to; air quality, dredging/dredged material disposal, soil remediation, ballast water, habitats, ship wastes and reception facilities.
2. Provide information on port environmental matters to the Association so that IAPH's position can be put forward at IMO, IALA, UNCTAD, ILO and others.
3. Develop a framework for a Green Port Programme.
4. Co-ordinate with PIANC Environmental Commission through active participation of IAPH members in PIANC work groups, consistent with the IAPH-PIANC joint agreement.
5. Maintain a close liaison with other environmental and dredging organisations such as AAPA, CEDA, WODA, USACE, IADC and others.
6. Oversee activities of WPCI.

Various environmental issues relevant to ports were discussed, including:

- International developments made for Air Emission Control and Greenhouse Gas Emission Control
- Progress of key projects of the World Ports Climate Initiative (WPCI), such as Environment Ship Index (ESI), On-shore Power Supply (OPS) and Carbon Foot Printing (CFP)
- International progress made for Ballast Water Management, Port Reception Facilities and the London Convention
- Advanced best practices of noise management in ports, especially the NoMEPort project promoted by European ports

2.3 Legal Committee

Chaired by Frans van Zoelen,
Port of Rotterdam Authority,
The Netherlands



Mission:

1. Initiate, follow-up, study and recommend proposed action to be taken on behalf of IAPH concerning any issues in which the collective interests of port authorities are brought into question from the legal point of view.

Technical Committees

Legal Committee Mission (continued):

2. Follow and if necessary intervene in international arenas which produce legal instruments relevant for IAPH, especially the Legal Committee of IMO.
3. Assist other technical committees of IAPH with respect to relevant legal matters and to international legal instruments promoted by international organisations.

IAPH Legal Database and the Introduction to Port Laws for Port Officials: It was agreed that both legal compilations be updated by adding new conventions such as 'Hong Kong Ship Recycling' and 'Rotterdam Rules'.

Resolution on Piracy: With an aim to advocate international organisations and States to take suitable actions to deter acts of piracy, the Committee drafted a resolution for approval at the Board Meeting in Savannah on 9 June, 2010.

Legal developments at international organisations, including IMO, are also discussed on an ongoing basis.

3. Group for Development, Operation & Facilitation (Group III)

3.1 Port Planning & Development Committee



Chaired by Wolfgang Hurtienne,
Hamburg Port Authority, Germany

Mission:

1. Monitor, collect, analyse and disseminate information pertaining to development, planning, design, construction and maintenance of port and harbor facilities.

Completed projects that were carried on from previous work term include:

- Economic Evaluation of Port Projects
- Port Development Project Financing
- Port Redevelopment – Best Practice Cases of Solving Problems at the Port City Interface

Projects from this work term that have been completed:

- Impact of Economic Crisis on Ports
- Impact of Climate Change on Seaports

The following projects from this work term that will be completed by May 2011:

- Adaptation Measures against Climate Change
- Co-operation between Ports – Motivation and Market Instruments

3.2 Port Operations & Logistics Committee

Chaired by Xavier Gesé Aperte,
Puertos de Estado, Spain



Mission:

1. Monitor, collect, analyse and disseminate information and elaborate recommendations pertaining to the improvement of port services, port operations, port and terminal management considering the port as an inter-modal link and crucial node of the logistics chain.

Ongoing discussions include the following topics:

- Productivity indicators for container terminals
- Cutting-edge measures to improve productivity of terminal operations
- Studies on the role of ports in the logistics chain
- Initiatives to promote Short Sea Shipping

3.3 Trade Facilitation & Port Community System (PCS) Committee

Chaired by Frédéric Dagnet,
Grand Port Maritime de Marseille, France



Mission:

1. Provide information concerning the latest developments in technology and the implications to ports of information processing and flows that are required to facilitate the movement of cargo and ships.
2. Monitor developments at international organisations that might affect trade facilitation of the ports industry and provide information concerning positions to be taken by the Association.

International progress in the trade facilitation and PCS field such as that achieved at UN/CEFACT, WCO and EU are monitored on an ongoing basis and reported to members.

IAPH Port Community System Survey Project: The PCS Survey Project, in which some committee members are sent to selected ports worldwide to carry out on-site surveys, is now underway. The results of the project will be reported at IAPH World Ports Conference in Busan 2011.

IT Award: member ports will be called upon to submit entries for the IT Award and the winner will be announced at the IAPH World Ports Conference in Busan, 2011.

Technical Committee reports and database



Look online to solve problems at the port/city interface

When a Technical Committee completes a project it publishes a final report or database. IAPH members can access these outcomes online by downloading them for free at:

http://www.iaphworldports.org/members_only/library

Four reports and one database were published by the Port Planning and Development Committee (PPDC) between July 2009 and June 2010. These are:

Economic Evaluation of Port Projects

Project Leaders: **Susumu Naruse**, IAPH Secretary General, Former Chair of PPDC; **Tony Navaratne**, committee member, Sydney Ports Corporation

How ports ascertain the likely economic benefits of a planned port development is the focus of this report. A survey was conducted in early 2009 with replies from 27 member ports. The report gives details of two approaches used to assess the economic impact of a port project – 'Cost-Benefit Analysis' and 'Economic Impact Assessment'. The survey results are concisely summarised, indicating which methodology of assessment is used for each port surveyed.

Port Development Project Financing

Project Leader: **Masahiko Furuichi**, Vice Chair of PPDC

This report considers the financial sources of port development projects, especially large-scale and cargo-related port development projects. A survey was conducted in early 2009, with responses from 28 member ports. It

reveals that the guiding principles of financing port projects vary depending, for example, on whether or not the development is a common facility at the port. The results of the survey have been compiled to show the general outline of 26 projects and their financial sources.

Impact of Economic Crisis on Ports

Project Leader: **Masahiko Furuichi**, Vice Chair of PPDC

This report analyses the latest trends in container throughput brought about by the financial crisis at major IAPH ports. Using the OECD's Composite Leading Indicator (CLI), the report aims to identify early signs of recovery in economic activities in major countries. By combining CLI data with major ports' container throughput, the report shows a possible time lag between OECD CLI trends and actual container throughput in major ports.

Impacts of Climate Change on Seaports

Project Leader: **Austin Becker**, PhD Student of Stanford University; **Satoshi Inoue**, Former Secretary General

Based on a survey, the report assesses both the current level of understanding and any plans to address climate change among the member ports of IAPH and US port authority association AAPA. The survey was conducted in 2009 with 93 responses from ports worldwide. The report gives an overview of the respondents' current attitudes toward port planning to adapt to climate change.

Port Redevelopment/Best Practice Cases of solving Problems at the Port-City Interface

Project Leader: **Wolfgang Hurtienne**, Chair of PPDC, Hamburg Port Authority in collaboration with AIVP

This database presents various successful examples of port redevelopments that have managed to harmonise port developments with neighbourhood activities. The 26 examples are listed and grouped into two categories: 'Old Port Transformation' and 'City-friendly Port Operations'. This web-based information has been created as a resource for port planners considering future projects. These case-study examples were collected in collaboration with AIVP.

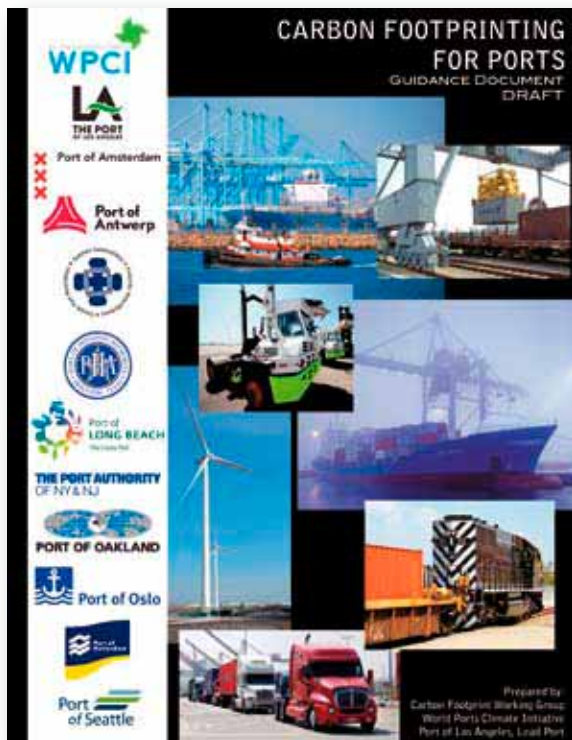
Update on the World Ports Climate Initiative

IAPH • PORT ENVIRONMENT COMMITTEE

WPCI



The World Ports Climate Initiative (WPCI), which IAPH is committed to support, finalised three of its six projects. (see below and opposite). For details of all the WPCI projects go to: www.wpci.nl



Carbon Foot Printing (CFP) for Ports

Guidance documents on CFP for Ports

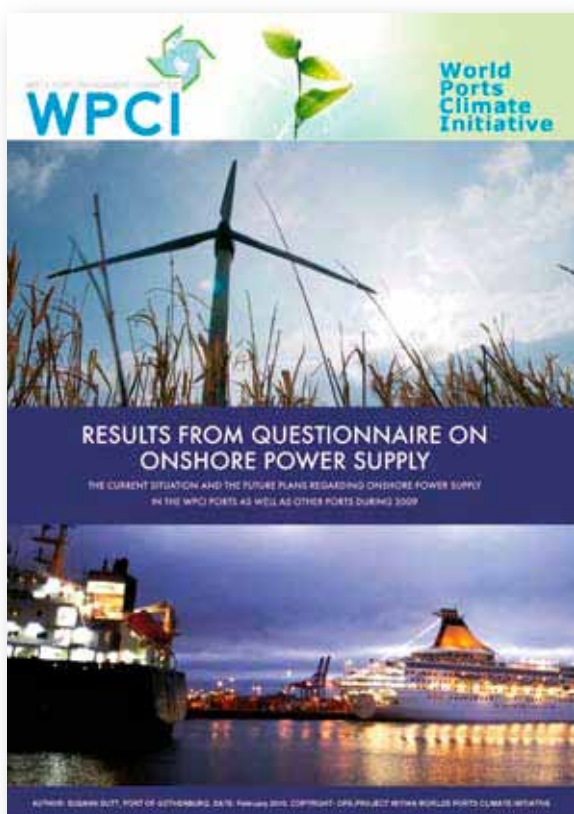
This document explores several different approaches for ports to develop their own CFP inventories for their activities. It covers in detail:

- Policy Framework
- Technical Framework
- Emission Estimation Methods

Nine major world ports, led by the Port of Los Angeles, have contributed their own knowledge and experiences to the project.

To download the report, please go to:

[www.wpci.nl/docs/presentations/PV%20DRAFT%20WPCI%20Carbon%20Footprinting%20Guidance%20Doc%20\(9%20Nov%202009\)%20scg.pdf](http://www.wpci.nl/docs/presentations/PV%20DRAFT%20WPCI%20Carbon%20Footprinting%20Guidance%20Doc%20(9%20Nov%202009)%20scg.pdf)



Onshore Power Supply (OPS)

The Port of Gothenburg takes the lead in this OPS project. Its aim is to reduce the emission of air pollutants and greenhouse gases in the port area by encouraging the use and implementation of OPS technology.

• OPS Survey – Results from Questionnaire on Onshore Power Supply (OPS)

A survey on the 'Current Status and Future Plans Regarding Onshore Power Supply 2009' was carried out and the results are available as a report. Initially a questionnaire was sent to WPCI member ports and other port community bodies such as ESPO. A total of 53 responses were received. The report shows that about a third of respondents have already implemented OPS in their ports and 55% of WPCI member ports have already carried out an OPS feasibility study.

To download the report, please go to:

www.ops.wpci.nl/_images/_downloads/_original/1266503470_microsoftword-reportonshorepowersupplyquestionnairefebruary2010.pdf

• OPS Website

The OPS website was launched in spring 2010 by the OPS working group in WPCI. Its development has been led by the Port of Gothenburg, with support from WPCI member ports that have experiences of OPS. The website contains wide-ranging and detailed information from a 'basic OPS scheme' to an 'OPS calculation tool for ports'. It is hoped that the calculation tool will help ports to assess the costs and benefits of implementing OPS. The website is located on the IAPH public space, enabling both member and non-member ports to access the information.

To access the website, please go to: ops.wpci.nl/



IAPH Air Quality and Greenhouse Gas (GHG) Tool Box

Since its launch on 1 April 2008, the web-based IAPH Tool Box for Clean Air Programs has provided ports with valuable information to reduce air pollution in the port area. With increased concerns for the effects of global climate change, the Tool Box has been expanded to include GHG mitigation. The Tool Box is a designated project of WPCI and the expanded version offers port officials a variety of case study-style resources for GHG emission reduction strategies.

To access the Tool Box, please go to: iaphtoolbox.wpci.nl



Promoting IAPH

Ports & Harbors magazine

IAPH publishes an official journal, *Ports & Harbors*, six times a year and is issued every other month, with editorial input from IHS Fairplay. *Ports & Harbors* is a medium not only for IAPH members, but also for port professionals to exchange views and opinions, obtain useful information and share best practices concerning the wide-ranging issues faced by ports and the maritime industry.

In each issue of *Ports & Harbors*, a Cover Story focuses on a topical maritime issue, as listed below:



July 2009

- Genoa Conference
- Report on Working Sessions of IAPH World Ports Conference in Genoa, 2009



January 2010

- Economic Recovery
- Economic forecast for the coming year
- Ports commitment to overcoming economic difficulties



September 2009

- Climate Change and Port
- Industry's latest commitment to the environment
- Update on WPCI



March 2010

- Climate Change
- Report on COP15
- Findings from WPCI's OPS (Onshore Power Supply) questionnaire
- Joint survey on climate change and ports



November 2009

- Advanced Port Community Systems (PCS)
- Overview of the latest PCS, featuring two case studies, Ashdod and Felixstowe



May 2010

- Logistics Park and Inter-modal Connection
- Advantages of a port's hinterland access
- Multimodal Antwerp
- Benefits of dry ports

IAPH Website

IAPH's website gives you easy access to a wide range of the latest information on port industries worldwide.

For example, there is information on the Environmental Ship Index (ESI) and Onshore Power Supply (OPS), both of which are currently featured in the World Ports Climate Initiative (WPCI). Also available to both members and non-members are members' port news, events, statistics and pictures, as well as information on IAPH's activities.



IAPH members only can access the additional information in the Members Area. This includes databases and reports released by its Technical Committees, other reports and publications, online co-ordinators' directory and other information.

The Secretariat, assisted by the IAPH Communication and Community Relations Committee, is currently working on the launch of a new-look IAPH website that will offer more features and provide more information to non-members. Go to: www.iaphworldports.org/

IAPH Online Newsletter

The IAPH Online Newsletter has been sent to around 1,500 subscribers on a bi-weekly basis since 2002 and contains up-to-date Association news, such as IAPH meetings, Technical Committee activities, member ports' news and other relevant information.

Both members and non-members can receive the IAPH Online Newsletter. Please contact: newsletter@iaphworldports.org



IAPH Membership Directory

The IAPH Membership Directory provides easy-to-access information on our members, such as contact addresses and port cargo statistics, useful when networking with other IAPH members around the world. The Membership Directory is currently only

available to members and in hard copy. Whilst the contents will remain exclusive to members, the Secretariat is working towards its contents being uploaded to the website to enable members to easily update their information online.



Conference Proceedings of the 26th IAPH World Ports Conference

The Conference Proceedings document includes speeches, presentations, photos and attendance list of the 26th IAPH World Ports Conference in Genoa, Italy. A digital version of the proceedings is also available on the

IAPH website at:

www.iaphworldports.org/members_only/library

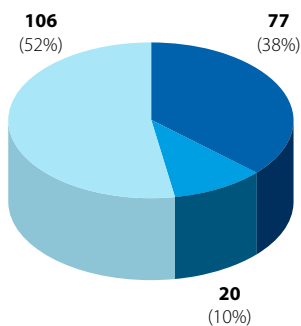


Membership update

As of 20 May 2010, the Association comprised 349 members in over 88 countries or economies. The regional breakdown for each membership is as listed below.



Value in membership... IAPH meetings provide networking opportunities with other port professionals



Regular Members: 203

Asia/Oceania Region: **106**

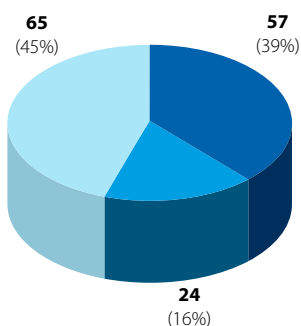
- Asia region: 97
- Oceania region: 9

Americas Region: **20**

- North America region: 11
- South America region: 9

Africa/Europe Region: **77**

- Africa region: 22
- Europe region: 55



Associate Members: 146

Asia/Oceania Region: **65**

- Asia region: 62
- Oceania region: 3

Americas Region: **24**

- North America region: 19
- South America region: 5

Africa/Europe Region: **57**

- Africa region: 8
- Europe region: 49

- Africa/Europe
- Americas
- Asia/Oceania

Ins and Outs of Regular Members (2009-2010)

From 1 April 2009 to 20 May 2010, six members joined and eight members left. The Regular Members who joined or left during this period are as listed below:

New Members

- Philippine Ports Authority (Philippines)
- Port of Miami (USA)
- Brunsbüttel Ports GmbH (Germany)
- Port of San Diego (USA)
- Baku International Trade Sea Port (Azerbaijan)
- TransInvestService-TIS (Ukraine)

Withdrawals

- Fukuoka Prefectural Government (Japan)
- Directorate General of Sea Transportation (Indonesia)
- Dalian Port Corporation (China)
- Anonymous Society Seaport of Vlore (Albania)
- Associated British Ports (UK)
- Halifax Port Authority (Canada)
- Port of London Authority (UK)
- Dublin Port Company (Ireland)

Ins and Outs of Associate Members (2009-2010)

From 1 April 2009 to 20 May 2010, 17 members joined and nine members left. The Associate Members who joined or left during this period are as follows:

New Members

- Port Training Institute (Egypt)
- Starcrest Consulting Group, LLC (USA)
- DSM Dyneema (China)
- WCN Publishing (UK)
- The Port Fund (UK)
- Chalmers University of Technology (Sweden)
- Hassan Mousa Al Quemzi (UAE)
- Fast Global Logistics (Morocco)
- Sea Service Ltd (Greece)
- Marseille Gyptis International (France)
- Maritime Cargo Processing Plc (UK)
- Sea & Tec Co Ltd. (Korea)
- SAM Electronics GmbH (Germany)
- Global Maritime & Port Services Pte Ltd (Singapore)
- Dolphin Exhibitions (UK)
- APM Terminals (Netherlands)
- Port Equipment Manufacturers Association (UK)

Withdrawals

- International Port Cargo Distribution Association (Japan)
- Elaborate Communications Ltd. (UK)
- MWH Global (USA)
- Nippon Yusen Kaisha (NYK Lines) (Japan)
- Containerization & Intermodal Institute (UK)
- Mr. Joseph Burke (Chairman, Dublin Port Company, Ireland)
- Informa Maritime & Transport (China)
- Mirai Construction Co Ltd. (Japan)
- Mr. Enda Connellan (Chief Executive, Dublin Port Company, Ireland)

2009 Accounts

Accounting Principle

IAPH adopts 'Accrual Basis Accounting' in principle, but from the fiscal year 2009, for Membership Dues only, IAPH has terminated counting 'Accrued Revenue' and 'Reserve' for uncollectible accounts, as dues are not acknowledged as a normal kind of credit. This resulted in reducing the revenue of Membership Dues by ¥9M on a nominal basis.

Statements of Revenues & Expenses

The total revenue for the fiscal year 2009 was ¥145M against a budget of ¥149M and total expenses of ¥126M against the budget of ¥147M, leaving a surplus of ¥19M against ¥1.4M in the budget.

The Japanese Yen has been relatively stable against the SDR (Special Drawing Rights) during 2009 and so the exchange rate did not significantly affect the revenues from membership dues. (1SDR =¥137 at the time of budget, and ¥140 on average throughout the year).

Employment of a member of staff was postponed for six months and this decreased personnel expenses. The expenses for Technical Committee Support was underutilised and expenses for the IAPH World Ports Conference in Genoa in May 2009 was deferred to 2010 due to a delay in the preparation of the conference's proceedings.

Balance Sheet

Net worth as of 31 December 2009 reached ¥410M, an increase of ¥28M compared with ¥382M at the end of 2008. This is attributed to the surplus for the period and some appreciation of the assets in Euro and Sterling.

Statement of Revenues and Expenses

January 1 to December 31, 2009

General Accounts for 2009 (Unit : Yen)			
Items	Budget	Actual	Difference
1 Membership Dues	118,000,000	108,479,511	-9,520,489
Regular Members	107,000,000	96,901,262	-10,098,738
Associate Members	11,000,000	11,578,249	578,249
2 Interest Received	4,500,000	6,500,188	2,000,188
3 Other Incomes	26,200,000	29,766,106	3,566,106
Revenues in this term	148,700,000	144,745,805	-3,954,195
1 Personnel Expenses	67,400,000	63,605,424	3,794,576
2 Non-Personnel Expenses	78,910,000	61,243,812	17,666,188
Office Expenses	11,960,000	12,263,733	-303,733
Correspondence and Communications	2,500,000	2,194,692	305,308
Publications	20,200,000	21,485,630	-1,285,630
Information Services	1,000,000	756,000	244,000
Overseas Travel Expenses	7,000,000	3,475,632	3,524,368
Social Expenses	500,000	293,501	206,499
Conference Expenses	8,000,000	3,673,202	4,326,798
Professional Services	2,050,000	2,024,400	25,600
Miscellaneous	3,000,000	2,889,284	110,716
IAPH Liaison Work	10,200,000	10,774,290	-574,290
Technical Committee Support	11,000,000	921,568	10,078,432
Special Projects	1,500,000	491,880	1,008,120
3 Other Expenses	1,000,000	1,013,672	-13,672
Expenses in this term	147,310,000	125,862,908	21,447,092
Surplus for the period	1,390,000	18,882,897	17,492,897

Overall Accounts for 2009 (Unit : Yen)

Items	General Accounts	IAPH Training Scholarship Fund	Akiyama Prize Fund	Overall Accounts
1 Membership Dues	108,479,511	-	-	108,479,511
2 Interest Received	6,500,188	7	-	6,500,195
3 Other Incomes	29,766,106	105	-	29,766,211
Revenues in this term	144,745,805	112	-	144,745,917
1 Personnel Expenses	63,605,424	-	-	63,605,424
2 Non-Personnel Expenses	61,243,812	665,740	96,720	62,006,272
		Genoa Open Award	Akiyama Award	
3 Other Expenses	1,013,672	-	-	1,013,672
Expenses in this term	125,862,908	665,740	96,720	126,625,368
Surplus for the period	18,882,897	-665,628	-96,720	18,120,549

Balance Sheet

as of December 31, 2008 and 2009

(Unit : Yen)

Items	2009	2008	Difference
Assets			
Current Assets	148,130,622	124,878,433	23,252,189
Cash and Deposits	144,165,108	113,120,840	31,044,26
Petty Cash	65,373	49,634	15,739
Ordinary Deposits	51,859,735	22,124,006	29,735,729
Fixed Deposits	92,240,000	90,947,200	1,292,800
Accrued Revenues	3,209,596	14,681,794	-11,472,198
Reserve for Uncollectible Accounts	-	-3,600,000	3,600,000
Other Current Assets	755,918	675,799	80,119
Fixed Assets	312,706,622	327,846,168	-15,139,546
Specific Fixed Assets	54,875,855	76,556,828	-21,680,973
Retirement Allowance Fund	45,383,100	66,301,725	-20,918,625
IAPH Training Scholarship Fund	3,462,343	4,127,971	-665,628
Akiyama Prize Fund	6,030,412	6,127,132	-96,720
Other Fixed Assets	257,830,767	251,289,340	6,541,427
Fixture and Equipment	82,320	148,524	-66,204
Investment Securities	254,006,464	247,398,833	6,607,631
Leasehold Deposits	3,741,983	3,741,983	-
Total Assets	460,837,244	452,724,601	8,112,643
Liabilities			
Current Liabilities	5,696,639	4,887,372	809,267
Accrued Expenses	3,588,668	3,367,073	221,595
Deposits Received	842,987	755,826	87,161
Deferred Revenues	787,710	327,174	460,536
Reserve for Wages and Allowances	477,274	437,299	39,975
Fixed Liabilities	45,383,100	66,301,725	-20,918,625
Reserve for Employee Retirement	45,383,100	66,301,725	-20,918,625
Total Liabilities	51,079,739	71,189,097	-20,109,358
Net Worth			
Restricted Net Worth	6,030,412	6,127,132	-96,720
Other Net Worth	403,727,093	375,408,372	28,318,721
Total Net Worth	409,757,505	381,535,504	28,222,001
Total Liabilities and Net Worth	460,837,244	452,724,601	8,112,643

Report of the Independent Auditors

The Board of Directors of the International Association of Ports and Harbors

We have audited the accompanying balance sheet of the International Association of Ports and Harbors (the "Association") as of December 31, 2009, the related statement of changes in net worth and the inventory of property (collectively, the financial statements) and the statement of revenues and expenses for the year then ended. These financial statements and the statement of revenues and expenses are the responsibility of the Association's management. Our responsibility is to express an opinion on these financial statements and the statement of revenues and expenses based on our audit.

We conducted our audit in accordance with auditing standards generally accepted in Japan. Those standards require that we plan and perform the audit to obtain reasonable assurance about whether the financial statements and the statement of revenues and expenses are free of material misstatement. An audit includes examining, on a test basis, evidence supporting the amounts and disclosures in the financial statements and the statement of revenues and expenses. An audit also includes assessing the accounting principles used and significant estimates made by management, as well as evaluating the overall financial statement presentation. We believe that our audit provides a reasonable basis for our opinion.

In our opinion,

(1) the financial statements referred to above present fairly, in all material respects, the financial position of the Association at December 31, 2009 and results of changes in net worth for the year then ended in conformity with the accounting principles and practices for public-interest corporations generally accepted in Japan; and

(2) the statement of revenues and expenses referred to above presents fairly, in all material respects, the results of revenue collected and expenses paid by the Association applicable to the 2009 fiscal year ended December 31, 2009 in conformity with the guidance for the financial reporting of public-interest corporations (issued on March 23, 2005).

We have no interest in the Association which should be disclosed in compliance with the Certified Public Accountants Act of Japan.



Ernst & Young ShinNihon LLC

February 19, 2010

Chair of the Finance Committee



20 May 2010

The President,
IAPH

Dear Sir,

It is my privilege as Chair of the Finance Committee to recommend the 2009 Financial Statements and Balance Sheet to the Executive for adoption and convey some general overview comments on the results achieved last year.

Firstly, it is with deepest regrets that I am unable to attend the Mid-Term Board Meeting, being held in Savannah, USA. My sincere apologies! I hope this has not inconvenienced the organisers unduly.

The Secretariat is again to be thanked for their help and support in the successful and careful management of the Association's financial affairs. Given the nature of the Association's revenue generation and continuing difficulties with the exchange rate fluctuations and the resulting pressures on ports from the global recession, the overall results are pleasing in a very challenging environment. The continuing work to reduce costs as well as the Association's exposure to undue currency movements, is to be applauded.

As noted last year at the last Conference, the underspending relative to the budget allocations and more particularly the Technical Committee's work, was disappointing given the overall importance of the Technical Committee work to the Association and its wider membership. Again, work to improve the presentation and functionality of the financial statements to make them more meaningful and readable, is ongoing.

The Secretary General's detailed comments are an accurate reflection of the individual areas in the accounts and highlight the work of the Secretariat in a number of key areas to control costs.

Again, in concluding I would like to convey my best wishes to the President and Executive for the successful running of the Mid-Term Board Meeting and again thank and congratulate the new Secretary General for his endeavours and prudent management over the last year.

Kind regards,

A handwritten signature in black ink, appearing to read 'G Cowie', with a stylized flourish at the end.

Garth Cowie

Chairman of Finance Committee

Your Officers for the term 2009/2011



President

Gichiri Ndua

Managing Director
Kenya Ports Authority, Kenya



Vice Presidents

1st Vice President for Americas Region

Geraldine Knatz, Ph D

Executive Director
Port of Los Angeles, USA



2nd Vice President for Asia/Oceania Region

Grant Gilfillan

Chief Executive Officer
Sydney Ports Corp, Australia



3rd Vice President for Africa/Europe Region

Santiago Garcia Milà

Deputy Managing Director
Autoritat Portuària de Barcelona, Spain



Immediate Past President

OC Phang

Former General Manager
Port Klang Authority, Malaysia



Conference Vice President

Ki Tae Roh

Chief Executive Officer & President
Busan Port Authority, Korea

Executive Committee Members as of 30 June, 2010

Americas Region

(4 members)

* Curtis J Foltz

Executive Director
Georgia Ports Authority, USA

* Bill Johnson

Port Director
Port of Miami, USA

* Alberto Díaz

President
National Port Administration, Uruguay

Mario Arbulú

President
Empresa Nacional de Puertos SA, Peru

Asia/Oceania Region

(8 members)

* Richard Joost Lino

President Director
Indonesia Port Corporation II, Indonesia

Jens B Madsen

Managing Director
Ports of Auckland Ltd, New Zealand

LE Cong Minh

Director General
Saigon Port Company Ltd, Vietnam

Masahiko Furuichi

Director for Special Research
Port and Airport Research Institute, MLIT, Japan

Abdul Wahab Al Diwani

Director, Maritime Safety, Security and Environment
Department of Transport, Abu Dhabi, UAE

Manjit Singh

2 Deputy Director (Policy)
Maritime and Port Authority of Singapore, Singapore

Haihu Lu

Chairman of the Board of Directors
Shanghai International Port (Group) Co Ltd, China

Beom Gou Kang

Director General for Port Policy
Ministry of Land, Transport and Maritime Affairs, Korea

Africa/Europe Region

(6 members)

Manfred Reuter

Director, International Affairs
Hamburg Port Authority, Germany

Khomotso Phihlela

Chief Executive
Transnet National Ports Authority, South Africa

Jean-Claude Terrier

President of the Executive Board
and Chief Executive Officer
Grand Port Maritime de Marseille, France

Leonids Loginovs

Chief Executive Officer
Freeport of Riga Authority, Latvia

Bara Sady

Managing Director
Port Autonome de Dakar, Senegal

Eddy Bruyninckx

Chief Executive Officer
Antwerp Port Authority, Belgium

Secretary General

Susumu Naruse, IAPH

* Newly elected in 2010

IAPH Secretariat



IAPH's head office is based in Tokyo, Japan, on the Sumida River

HEAD OFFICE

7th Floor, South Tower, New Pier Takeshiba
1-16-1 Kaigan, Minato-ku, Tokyo,
105-0022 Japan
Phone: +81 3 5403 2770
Fax: +81 3 5403 7651
E-mail: info@iaphworldports.org

Secretary General

Susumu Naruse

Under Secretary

Financial & General Affairs
Yasuo Miura

Under Secretary

Maritime Affairs, IAPH Technical Committee, Ports &
Harbors magazine
Hisayoshi Tokui

Under Secretary

Membership Affairs, Web Master, IAPH Online
Newsletter
Hiroyuki Nagai
info@iaphworldports.org

Assistant Under Secretary

Membership Co-ordination & Logistics, Ports &
Harbors magazine
Aya Fujinami

Library and Logistics Officer

Library & Mailing
Yoko Kuriya

Accounting Officer

Accounting & Office Administration
Yukiko Masumoto

Communication Officer

Membership Co-ordination & Logistics
Website, IAPH Online Newsletter
Eri Ito

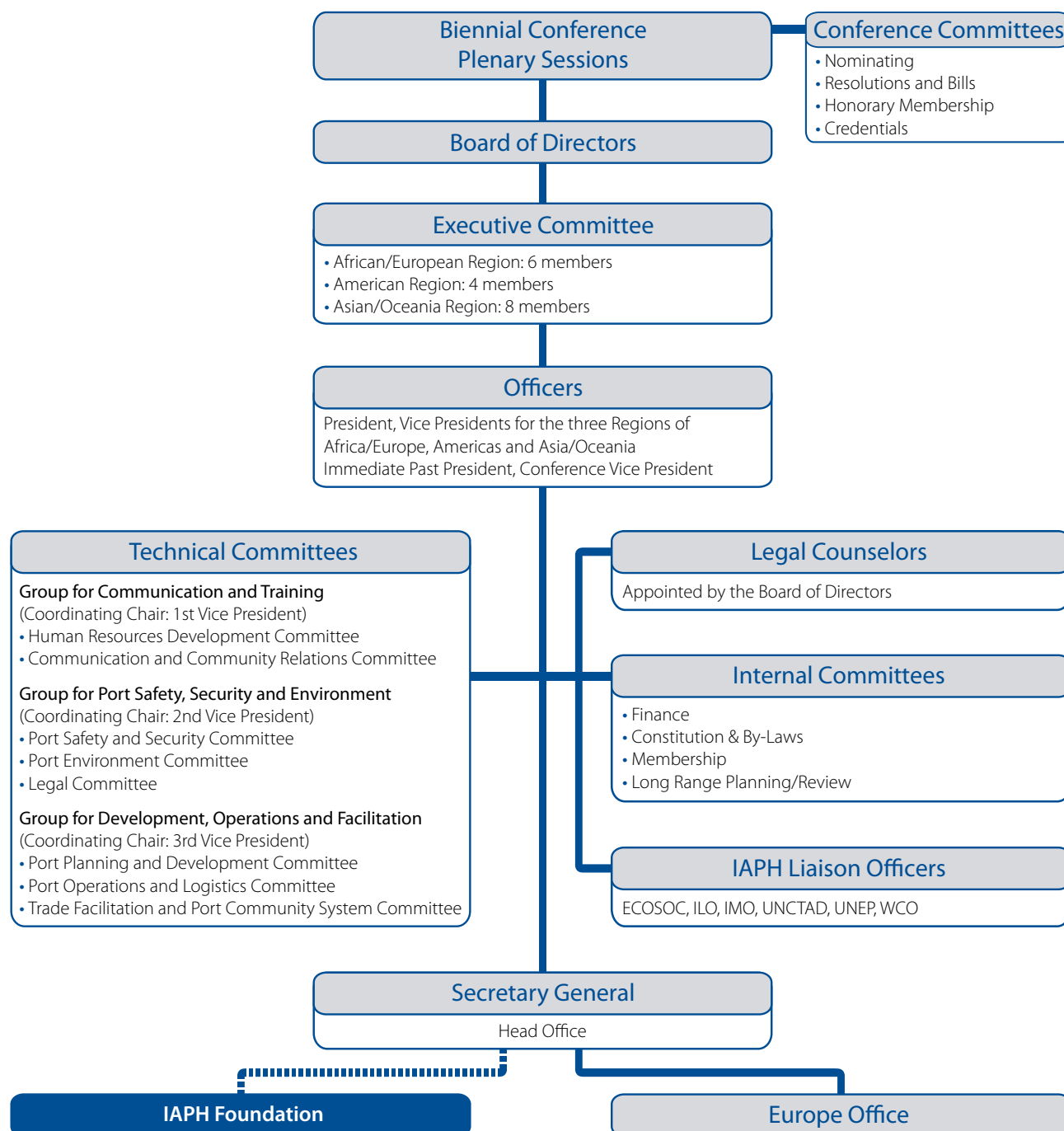
EUROPE OFFICE

Spreeuwendaal 6
2914 KK Nieuwerkerk
IJssel
The Netherlands
Phone: +31 180 32 33 99
Fax: +31 180 31 85 69
E-mail: info@iaph.nl

Managing Director

Fer M J van de Laar

Structure of IAPH





IAPH



The International Association of Ports & Harbors

7th fl. South Tower, New Pier Takeshiba, 1-16-1 Kaigan, Minato-ku, Tokyo 105-0022, Japan

Tel: +81-3-5403-2770

Fax: +81-3-5403-7651

Url: www.iaphworldports.org

Email: info@iaphworldports.org