

A N N U A L R E P O R T



2005-2006

IAPH

On November 7, 1955, some 100 delegates from 38 ports in 14 countries gathered in Los Angeles to announce the creation of the International Association of Ports and Harbors (IAPH). It was the first international gathering of players in the ports industry, and the organization vowed to foster friendly communication and dialogue among the world's ports, though they may be separated from each other geographically, culturally and linguistically. The IAPH would work to enable member ports to share their experiences and expertise to make them all more efficient and compatible with evolving needs.

The founding fathers of the IAPH believed that maritime transportation has always been important in the history of mankind and could help create a more peaceful world. The IAPH's motto "World Peace through World Trade – World Trade through World Ports" reflects that underlying spirit.

The past five decades have seen the IAPH grow steadily into a global alliance of ports representing today some 220 ports in nearly 90 countries. The member ports together handle over 60% of the world's sea-borne trade in terms of tonnage of cargos and more significantly, some 80% of the world's container traffic.

As of July 31, 2006, the IAPH comprises 352 members representing 85 maritime countries and economies of the world. Out of total membership, there are 218 Regular Members and 134 Associate Members. 133 members are located in the Africa/Europe Region, 48 members are in the Americas Region and 171 members are in the Asia/Oceania Region.

President's Message	1
Secretary General's Review	2
IAPH Officers (May 2005 - 2007)	2
Key Issues 2005 - 2006.....	3
The 4th Mid-Term Board Meeting in Mumbai.....	7
IAPH Highlights 2005 - 2006	8
Regional Activities	10
IAPH Publications 2005-2006	11
Award and Bursary Scheme	12
IAPH Committee Activities	13
IAPH General Accounts (January 1 – December 31, 2005).....	17
Contact us	18



**WORLD PEACE THROUGH WORLD TRADE
WORLD TRADE THROUGH WORLD PORTS**

President's Message

Serving as the IAPH president has been exciting. Our industry's unprecedented growth requires a heightened emphasis on port security, enhanced preparations for natural disasters, and improved environment protection efforts in addition to maintaining technological efficiency in global supply chain operations. These issues and others are part of the deliberations and resolutions of the IAPH Executive Committee and general membership at-large.

As you will see in the annual report, the IAPH continues to achieve financial and operational results. Over the past year, two important meetings were held — one immediately following the 24th IAPH World Conference held in Shanghai, the Executive Committee meeting in Los Angeles/San Pedro as a part of a year-long 50th anniversary celebration. The Memorandum of Understanding between the IAPH and the Organization of American States Inter-American Committee on Ports is expected to increase membership and involvement from Latin American ports. And the 4th Mid-Term Board Meeting was held in Mumbai in April 2006, the first IAPH meeting ever held in India.

The IAPH's staff, technical committees, and executive committee continue to improve membership services and communications through *Ports and Harbors Magazine* and the revised Web site. Our comprehensive legal database also is a premier resource.

I will continue to work to achieve the results that we desire for our organization. I look forward to presiding over the 25th IAPH World Conference in Houston, Texas. With an anticipated attendance of more than 1,200 delegates representing 87 countries and 351 organizations, I believe the Houston conference will reflect its theme — "Simply the Best." In addition organizational reports, a tour of the Port of Houston Authority's new Bayport container and cruise terminals, and insightful presentations from maritime industry leaders, we will also enjoy world class dining, shopping and cultural amenities.

As president of IAPH, I remain committed to working with all of my colleagues to address a dynamically evolving agenda focused on building the strategic framework that is critical to the on-going success of our global port operations.



H. Thomas Kornegay
IAPH President and
Port of Houston Authority Executive Director

IAPH Officers (May 2005 - 2007)



President
H. Thomas Kornegay
Executive Director
Port of Houston Authority, U.S.A.



2nd Vice President
Gichiri Ndua
Corporate Service Manager
Kenya Ports Authority, Kenya



1st Vice President
Datin Paduka O.C. Phang
General Manager
Port Klang Authority, Malaysia



3rd Vice President
Bernard S. Groseclose, Jr.
President and CEO
South Carolina State Ports Authority,
U.S.A.

The year of 2005 was very special to IAPH as we marked a historical milestone of its 50th anniversary. As reported in the previous annual report, we celebrated in the first half of the year at a series of events in Tokyo, Tehran, London and Shanghai, we went on in the second half going back to our hometown, Los Angeles, where our founding fathers met to establish IAPH in November 1955. Then the finale took place in Nairobi where executives of all African ports joined the celebration as well as those from other continents.

As part of 50th anniversary projects, we reinforced the IAPH technical committees by streamlining their structure and redefining the scope of work. I trust the new committee framework will better meet members' needs as well as facilitate their efficient and flexible participation. Also we have renewed the IAPH website to make it more informative and easy-to-use both to IAPH members and general public. The new website now provides the general public with not just updates of IAPH activity but also introduction to roles ports play for people's daily life.

In April 2006, the IAPH Directors met in Mumbai at the Mid-term Board Meeting that is the first ever held in India. All the participants were overwhelmed by the India's energy and potentials for the future growth. We were grateful to our hosts, Jawaharlal Nehru Port Trust and Mumbai Port Trust, for their excellent preparation and warm hospitality extended to us.

As IAPH embarks on the new voyage of the next half-century, I am convinced that we will continue to work together to build up more cohesive partnership among the world's ports and contribute to sustained growth of the world economy and attainment of the world peace.



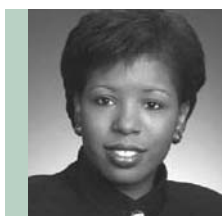
Satoshi Inoue
Secretary General



Immediate Past President
Pieter Struijs
Senior Executive Vice President
Port of Rotterdam, The Netherlands



Secretary General
Satoshi Inoue, Dr. Eng.
IAPH Secretariat



Conference Vice President
Argentina James
Director, Public Affairs
Port of Houston Authority, U.S.A.

Air Emission Control



Ports & Harbors
May 2005
Vol. 50 No. 2

While carrying cargo by ship is far more environmentally friendly than any other mode of transportation, shipping still needs to operate with cleaner gas emissions for sustainable development of the global society.

On May 19, 2005, MARPOL Annex VI entered into force and it not only sets limitation on gas emission of sulfur oxide and nitrogen oxide from ship exhausts, it also sets global cap of 4.5% m/m on the sulfur content in marine fuel. More stringent limit of 1.5% m/m sulfur content in marine fuel was brought into practice to Baltic Sea Area as special SOx Emission Control Areas (SECA) since May 19, 2006. North Sea Area also has been adopted as new SECA and it will be in full implementation of 1.5% m/m cap of sulfur content in November 2007.

Not only shipping industry but also port industry itself has started efforts to make “green port” by introducing measures to minimize gas emission from port operation. They started to use clean and green yard equipments which are fueled by ultra-low-sulfur diesel or powered by electricity. In some ports, vessels are asked to completely shut-off their engines and generators and to use shore-supplied power while they stay at berth, which is called “cold ironing” or “Alternative Maritime Power(AMP)” while they stay at berth.

IMO acknowledged at its MEPC 54th session(March 20-24, 2006) that standardization of shore-to-ship power supply connection are beneficial for industry and further studies are needed.

IAPH will actively work to co-operate with IMO and relevant organizations for development of standardization of shore-supplied-power connection.

Logistics Chain Security



Ports & Harbors
July 2006
Vol. 51 No. 4

Terrorist attacks on September 11, 2001 have drastically changed security concerns of international trade. The world port community immediately tightened security measures to prevent such incidents to happen to international maritime links and terminals. At the same time, IAPH worked hard with all parties involved at IMO to develop a new international regime for maritime security, resulting in the amendments of SOLAS Convention and creation of the ISPS Code in December 2002. Since July 1, 2004, terminal at the world's ports engaged in international trade have strictly complied with requirements of the ISPS Code to provide secure maritime services throughout the world.

Now that the world maritime sector operates under the new security regime, it is critically important to develop global security systems for entire logistics chains. As part of those efforts, in June 2005, World Customs Organization (WCO) adopted “Framework of Standards to Secure and Facilitate Global Trade” for which IAPH took part in the WCO's Task Force. It is composed of four core elements and two pillars in order to “establish standards that provide supply chain security and facilitation at a global level” and to “promote the seamless movement of goods through secure international trade supply chains”.

In March 2006, WCO established the Private Sector Consultative Group (PSCG) which comprised thirty chief executives from the private sector in the world in order to advise the High Level Strategic Group (HLSG) of WCO on key issues relating to implementation of the WCO Framework Standards. IAPH, as invited as a member of this PSCG, actively participated in the meetings.

International Organization for Standardization (ISO) also has initiated development of 28000 series of supply chain security standards to support the development of global logistics.

IAPH takes active position in ISO working groups. PAS28000 is a high level management standard for an organization to establish an overall supply chain security management system and PAS28001 is a specification to help organizations to establish adequate levels of security within their international logistics chain and also intended to be in concert with the WCO's Framework of Standards.

Places of Refuge



Ports & Harbors
May 2005
Vol. 50 No. 2

Maritime accident of an oil tanker the Prestige on November 13, 2002 off the Spanish coast had led IMO to discuss over the issue of “places of refuge” and resulted in two resolutions, “Guidelines on places of refuge for ships in need of assistance” and “Maritime Assistance Services(MAS)” at it’s 23rd Assembly in November 2003

IMO regarded that “ there is no obligation for the coastal State to grant (an access to a place of refuge), but the coastal State should weigh all the factors and risks in a balanced manner and give shelter whenever reasonably possible”.

In June 2003, Comité Maritime International(CMI) submitted their opinion to IMO stating that there should be an independent single convention to regulate the rights and obligations arising from the issue. IAPH also sent its position paper to IMO Legal Committee at it’s 90th session (April 18-29, 2005), strongly advocating a new convention which afford securities to cover every possible damages of ports when accepting distressed vessels in their ports. IMO discussed this matter at it’s 89th (October 25-29, 2004) and 90th session of Legal Committee and concluded that “At this point in time, there was no need to draft a convention dedicated to Places of Refuge” and “the more urgent priority would be to prompt ratification and implement the existing liability and compensation conventions”

In August 2005, CMI proposed a new legal instrument to complement the IMO’s Guidelines on Places of Refuge. IAPH expressed its view at a CMI’s conference in February 2006 and IMO’s Legal Committee meeting in April 24-28, 2006, stating that while appreciating the CMI’s works, IAPH respects at this stage the IMO’s decision to prompt ratification of related conventions in the hope of bringing in a Places of Refuge convention as the next agenda item.

Port Reception Facilities



Ports & Harbors
July 2006
Vol. 51 No. 4

For preservation and protection of maritime environment from pollution by ship generated wastes, MARPOL 73/78 established regulatory scheme on both ships and ports. While the convention restricted vessels to discharge various polluting substances into sea, it also requires ports to provide sufficient facilities of reception of wastes for ships.

Although it has elapsed considerable time since the convention was in effect and IMO adopted of “Guidelines for ensuring the adequacy of port waste reception facilities”, there still remains persistent complains about inadequacy of reception facilities from shipping industry.

For the aim of utilizing the practical experiences of participating organizations to develop workable solutions for this issue, “The Shipping and Port Industry Reception Facility Forum” was organized in April 2006 by IAPH, BIMCO, ICS, INTERCARGO, INTERTANKO and OCIMF. The Forum identified problem areas to work out a comprehensive action plan.

IMO’s Maritime Environment Protection Committee (MEPC) acknowledged the Forum’s action plan which was submitted to it’s 53rd session (July 18-22, 2005) as good basis for drafting it’s action plan to enhance the availability and adequacy of reception facilities. The IMO’s draft action plan was discussed in the Flag State Implementation(FSI) sub-committee at it’s 14th session in June 2006 and is scheduled to be submitted to MEPC 55th session in October 2006.

The draft Action Plan covers such six main categories, such as reporting, information on port reception facilities, equipment/technology, types and amount of wastes, regulatory matter and technical cooperation assistance.

Port Safety



Ports & Harbors
September 2005
Vol. 50 No. 4

Just like to any other sector of the transport industry, safety is of prime importance to ports in the world. It covers all safety for diversified activities taking place at a port, such as moving of vessels, handling of cargos and vessels at terminals and working of various expertises. IAPH therefore has been and continues to work actively to identify problems in port safety and develop guidelines and recommendations for enhanced safety management.

Early in 2006, "International Safety Guide for Oil Tankers and Terminals (ISGOTT)" was completely revised into the 5th edition with official announcement of publication on July 13, 2006. Since its first publication in 1978, IAPH has constantly been taking part in its drafting group, comprising IAPH, Oil Companies International Marine Forum (OCIMF) and International Chamber of Shipping (ICS). The ISGOTT is an industry guide that is widely accepted as the only authoritative guidelines on handling of oil, chemical and gas tankers at port. Together with OCIMF and ISC, IAPH is confident that the new edition will contribute to the further improvement of the safety of oil terminals and tankers, bringing them closer to the goal of zero accident the which the whole industry aspires.

Another IAPH's long-evolving work for port safety is the World Vessel Traffic Service (VTS) Guide. Originally, it was initiated in 1986 by IAPH, International Association of Lighthouse Authorities (IALA) and International Maritime Pilots Association (IMPA). It aims at internationally standardizing the information in a clear and concise manner on communication methods and safety requirements for vessels navigating sea and port areas under the control of VTS, which provides to shipmasters and navigators directions and requirements for the safe passage of vessels. All information of the Guide is supplied by VTS centers or their operating authorities of the world's ports. At present, a survey is running worldwide for its further improvement and membership increase.

Port Congestion



Ports & Harbors
January 2006
Vol. 51 No. 1

Addressing around 1,200 delegates and guests at the IAPH World Ports Conference in May 2005, CEO of AP Møller-Maersk, Tommy Thomsen stressed, "ports are barely managing to handle today's demand, and they won't be able to handle tomorrow's growth unless something is done now!" In particular, the world's ports are facing today an unprecedented rapid growth in container trade, strongly driven by the globalization of the world economy and the rise of China as the world's manufacturing and consuming center.

In 2004, major ports on the US West coast such as Ports of Los Angeles and Long Beach suffered from severe congestions, resulting in a more than one week long delay in turn-around of container vessels. Similar congestions were also experienced at major ports in the Northern Europe range. When the Executive Committee met in Los Angeles in October 2005, various efforts and counter measures to congestions were extensively discussed including Pierpass and Alameda Corridor Projects both jointly undertaken by Ports of Los Angeles and Long Beach.

To alleviate port congestions, terminal operators and port authorities have so accelerated a range of measures that currently terminals of major ports are utilized at their capacity to a maximum extent. As a result, 2005-2006 saw significant improvements and little congestions at major terminals. The world container trade, however, is continuously growing at an annual rate of well over 10% or some 40 million TEUs, it is no doubt for the world's ports to have to make every effort to further expand their capacity as well as increase productivity.

In addition, container vessels are increasing in size, deploying more ultra-large 8,000-10,000 TEU vessels on the main trade routes. It will not only require ports to expand in physical dimension to accommodate these bigger vessels but also speed up cargo handling at terminals to load and unload a nearly doubled volume of containers in the same time of operations. Also vital is to improve aggressively access links from and to port, developing upgraded highway and railway systems

efficiently connecting ports to their service areas. For sustained growth of the world economy, ports should not and could not be a bottleneck to the global logistics system.

Natural Disasters



Ports & Harbors
November 2005
Vol. 50 No. 5

The 2005 hurricane season was extraordinary to the US Gulf Coast areas and ports. In less than one month, two record-breaking hurricanes, Katrina and Rita, attacked the coastal areas of Texas, Louisiana, Mississippi and Alabama, killing more than 1,200 people and causing US\$ billions of damages. Particularly, Port of New Orleans was hit so devastatingly and closed down for commercial operations. It took months to make a full recovery to normal. During that period, IAPH closely cooperated with the American Association of Port Authorities (AAPA) to disseminate latest updates on the Gulf ports and assist them to facilitate the prompt recovery.

Also in the recent years, several large tsunamis caused by earthquakes off the Indonesian coast hit so badly countries along the Indian Ocean. In particular, the largest one on December 26 2004 killed nearly 300,000 people in those countries and damaged destructively towns and villages and infrastructure including ports in the areas. Another tsunami in March 2005 and the latest in July 2006 left severe incidents and damages in Indonesia and neighboring countries. In January 2005, IAPH unanimously resolved to take actions to strengthen preparedness of ports for earthquake and tsunami disasters at the Executive Committee meeting, Yokohama.

Following adoption of that resolution, IAPH discussed lessons to be learned from such large earthquakes and resultant tsunamis. Sessions at IAPH Regional Meetings for Asia/Oceania in 2005 and 2006 were devoted to this critical issue of the region for sharing experiences and learning best practices among member ports. Also, an international seminar on port and tsunami is scheduled as part of the upcoming Executive Committee's meeting in Shizuoka, Japan on October 9th to 13th 2006.

Located where the land meets the sea, ports are vulnerable to such natural disasters as hurricanes, tsunamis and high waves. Therefore there is no overemphasizing of importance for ports to get well prepared to these natural disasters in advance. IAPH is now working on developing some guidelines on port readiness for tsunami. Also, an international seminar on port and tsunami is scheduled as part of the Executive Committee's meeting in Shizuoka, Japan on October 9 to 13 2006.

The 4th Mid-Term Board Meeting in Mumbai

The 4th Mid-Term Board meeting of the IAPH was held in Mumbai, India, from April 9 to 12 kindly hosted by Mumbai Port Trust, Jawaharlal Nehru Port Trust and Indian Ports Association. It is the first IAPH meeting ever held in India. Some 80 delegates assembled from 25 countries worldwide and many guests from local port community also joined in the programs of the meeting.

The board meeting was preceded by Group meetings of Technical Committees on Monday, April 10. Next day, the Regional Board meetings on that afternoon. Delegates were honored to welcome Secretary (Shipping), Government of India, A.K. Mohapatra at Inaugural Dinner in the evening.

The Board discussed not only in-house issues such as preparation of the 25th World Ports Conference in Houston in 2007 but also various international issues including logistics chain security and Alternative Maritime Power, and went out for technical tour to Mumbai and Jawaharlal Nehru Port.

On the final day, the Board had two sessions of panel discussion on “Port Reform” and “Indian Ports Today” by inviting prominent speakers from the Indian maritime society, including Joint Secretary (Shipping), Government of India, A.K. Bhalla.

In spite of busy business schedule, the delegates enjoyed Indian Culture, such as morning Yoga session or Classical Indian dance at the inaugural night performed by the family of Mumbai Port Trust.



IAPH Golden Jubilee

Following the 24th World Ports Conference in Shanghai, May 2005, the IAPH's Golden Jubilee was further celebrated in 2005 at the following two IAPH events.

- IAPH Executive Committee (Exco) Meeting, Los Angeles, USA, October 6-7, 2005

IAPH went back to its birthplace when the IAPH Executive Committee (Exco) Meeting convened in October 2005 in Los Angeles/San Pedro. On October 6, an evening reception for 50th anniversary celebration was held at Marina Hotel, Los Angeles, attracting some 200 delegates including guests from local port community. U.S. Secretary of Transportation Norman Mineta delivered a keynote address, and Los Angeles Mayor Antonio R. Villaraigosa congratulated the IAPH's milestone anniversary.



Photo: (from left) Lloyd Menveg, one of the IAPH's founder Honorary Members who chaired the first IAPH Conference in Los Angeles in 1955, and the 3rd President during 1959 – 1961, IAPH President H. Thomas Kornegay and U.S. Secretary of Transportation Norman Mineta.

- Africa/Europe Regional Celebration, Nairobi, Kenya, December 4-8, 2005

To conclude the year-round celebration, some 300 delegates gathered in Nairobi, Kenya for the last party – the opening ceremony of the IAPH/PAPC (Pan-African Ports Cooperation) Conference. The guests of honor invited were Mr. Moody, Awori, Kenya's 1st Vice President, who made key note address, and Mr. Gerrishon Ikiria, Permanent Secretary, Kenya's Ministry of Transport.



Stronger Tie with Latin American and Caribbean Ports

To strengthen tie between IAPH and Latin American ports, IAPH and the Inter-American Committee on Ports, Organization of American States (OAS-CIP) agreed to sign a Memorandum of Understanding for cooperation. A ceremony was held on October 6, 2005 during the IAPH Executive Committee (Exco) Meeting in Los Angeles to mark the signing of the MOU, which promotes closer collaboration through establishing common themes of interest and areas for cooperation between the two organizations.



Secretary General delivered his keynote speech at the first special meeting of the OSA-CIP, May 17-19, 2006, in Algeciras, Spain.

Photo: (from left) IAPH President H. Thomas Kornegay, Executive Secretary of the OAS-CIP Carlos Gallegos and IAPH Secretary General Dr. Satoshi Inoue.

Renewal of website: <http://www.iaphworldport.org>

As part of IAPH efforts to improve its information and communication tools, early September IAPH renewed of the website that was launched in January 2001. Main endeavors are on the following points:

- To make the top (index) page more informative and useful by presenting the latest news and information on IAPH activity at the forefront.
- To promote recognition of port industry among the general public by stressing the important roles the world's ports play in people's daily lives.
- To offer more useful information and data to the members in the Members Area, so that members can have access to the latest information on the Association
- To assist and facilitate activities of IAPH technical committees by reinforcing the "Technical Committee Room", for instance, offering online discussion forum and easy access to meeting documents.



The IAPH meets in a full session once every two years in different cities around the world to discuss issues of immediate and long-term interest and concern. At the conferences, port personnel can also acquaint themselves with state-of-the-art port and maritime technology showcased at the trade exhibition. In 2006, the 4th Mid-Term Board Meeting was held in Mumbai, India (see page 7.), and the 25th IAPH World Ports Conference will be held in Houston, U.S.A. in 2007.

The IAPH is constantly active not only in global scenes but also in regional perspective. Vice Presidents of IAPH elected from each of three regions; Africa/Europe, Americas and Asia/Oceania, represent their regions and organize their regional meetings, seminars and workshops to better address regional issues respectively.

■ Regional Meetings 2005 – 2006

Africa/Europe

December 4 – 8, 2005, Nairobi, Kenya
Joint meeting with Pan-African Ports Conference



Asia/Oceania

February 14 – 17, 2006, Karachi, Pakistan



March 1 – 3, 2006, Riga, Latvia



■ Executive Committee Meeting

October 5 – 7, 2005, Los Angeles, U.S.A.



Not only it's official journal "Ports & Harbors", IAPH has been active in publishing various publications such as Proceedings of the World Ports Conference and Guidelines, and also collaborating with other maritime organizations for publications such as International Safety Guide for Oil Tankers & Terminals and World VTS Guide.

Ports & Harbors

Vol.50 No. 1 – 5, Vol. 51 No. 1 - 4



Published bi-monthly;
March, May, July, September November, 2005
January, March, May, July, 2006

IAPH Annual Report 2004 – 2005



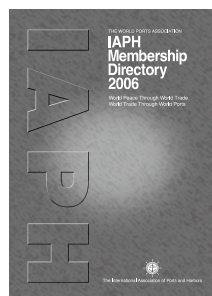
Published in September 2005

Proceedings of the 24th IAPH World Port Conference



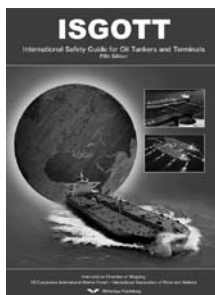
Published in November 2005

IAPH Membership Directory 2006



Published in January 2006

International Safety Guide for Oil Tankers & Terminals (ISGOTT) 5th Edition



Published in July 2006

You can find details and order form at the IAPH website; <http://www.iaphworldports.org>

Over the past years, IAPH has provided assistance to developing ports' training and education efforts and encouraged research into port efficiency and productivity under the Award and Bursary Schemes.

IAPH Special Award Scheme (Essay Contest)



The contest traces its roots back to 1979, but since 1983, the winner has received the Akiyama Prize, named after one of IAPH founding fathers, the late Toru Akiyama, who also served as Secretary General between 1967 and 1973. The contest was set up to encourage research in developing countries.

2006/2007 Contest will be inaugurated in 2006 August. The winner will be invited to the 25th IAPH World Ports Conference in Houston in 2007.

IT Award



Established in 1993, the 8th IT Award 2007 inaugurated in June 2006 to compete for excellence in IT applications in ports and maritime transportation. The winners will be given plaques at the first plenary session of the 25th IAPH World Ports Conference in Houston in 2007. Also, the award-winning entries will be publicized through IAPH media.

Bursary Scheme



Initiated in 1976, the IAPH Bursary Scheme has enabled more than 120 individuals from IAPH member ports in developing countries to attend advanced port training programs overseas at IAPH affiliated training institutes.

The Scheme has been suspended and reviewed carefully for a year since 2005 aiming at streamlining procedures to meet members' needs more effectively and encourage member port staff to take advantages of the scheme. It will relaunch in 2007.

IAPH as a membership organization addresses and tackles various issues of interest and concern to the entire membership through committees.

All household matters are dealt with by the following four Internal Committees.

- Constitution and By-Laws Committee
- Finance Committee
- Long Range Planning and Review Committee
- Membership Committee

The Technical Committees are the backbone of the IAPH activity to address, analyze and monitor issues of interest and concern for member ports. Various reports and guidelines are produced by Technical Committees, which have been regarded as valuable reference by all members and non-members as well, including international organizations and UN agencies.

Restructuring plan of Technical Committees was approved at the Board Meeting in Shanghai in May 2005, and new formation started October 2005. Now, eight committees are running as grouped under three overall subject areas of "Communications and Training", "Port Safety, Security and Environment" and "Development Operations and Facilitation".

Group for Communications and Training

- Human Resources Development Committee
- Communication and Community Relations Committee

Group for Port Safety, Security and Environment

- Port Safety and Security Committee
- Port Environment Committee
- Legal Committee

Group for Development, Operation and Facilitation

- Port Planning and Development Committee
- Port Operations and Logistics Committee
- Trade Facilitation and Port Community System Committee



Technical Committee Meeting in Mumbai

INTERNAL COMMITTEE & CHAIRS

Constitution and By-Laws

Jean Mongeau

Vice-President
Legal Affairs and Secretary,
Montreal Port Authority, Canada



- The committee aims to examine and check the provisions of the Constitution and By-Laws to ensure that a democratic spirit is reflected in all its aspects.
- To advise and make recommendations relevant to any query related to the constitutionality of the conducts of the IAPH.

Finance Committee

Garth Cowie

Chief Executive
Port of Napier Limited, New Zealand



- The committee aims to monitor the financial status of the Association on a regular basis, to ensure the smooth and uninterrupted operation of the activities of the Secretary General and further ensure the long-range prospects for financial self-sufficiency of the Association.
- To examine, as stipulated in the By-Laws, the financial reports and conduct examinations as appropriate.
- To take appropriate action or make recommendations to the Association as appropriate.

Long Range Planning and Review Committee

H. Thomas Kornegay

Executive Director,
Port of Houston Authority, U.S.A.



■ The committee aims to monitor the existing IAPH framework in relation to ongoing business trends within the transport sector, the activities of other international maritime-related industries, and advise the Executive Committee as appropriate.

■ To monitor the areas of interest of member ports and instruct the Head Office to stay abreast of changes taking place in the transport sector.

■ To coordinate with other committees, in particular with those related to "Sustainability & Growth," to ensure that findings are incorporated and implemented as appropriate.

Membership Committee

Pieter Struijs

COO, Port of Rotterdam Authority,
The Netherlands



■ The Committee, cognizant of the fact that the solidarity of membership is the core of the Association's activities, aims to look at how to attract the non-member ports and related organizations to IAPH.

■ This includes developing programs to foster greater interaction & dialogues amongst the member ports and to make IAPH more meaningful and understood by the members.

GROUP FOR COMMUNICATION AND TRAINING & CHAIRS

Human Resources Development Committee

Eddy Bruyninckx

Chief Executive Officer
Antwerp Port Authority, Belgium



■ In an attempt to revive the well-known IAPH Bursary Scheme which has been suspended for a year since 2005, the Committee has examined currently run programs of competent maritime training institutes globally, by addressing a questionnaire to those institutes. This has resulted in a designation of "IAPH approved training courses" of six institutes that are offering qualified pre-fixed courses for the period of 1-2 weeks.

■ The Committee at the same time, proposed a new application procedure and rules for the revived bursary scheme, mainly aimed at streamlining procedures to more encourage member port staff to take advantages of the scheme. Financial measures to run the scheme has been also reviewed carefully in order to secure constant and stable implementation of the scheme.

■ Essay Contest has been reviewed as well in recognition that the past contest had successfully carried out its initial objective to help motivate young staff in developing countries.

Communication and Community Relations Committee

José Perrot

Manager
Commercial Operations Department,
Port Autonome du Havre, France



■ A few progress have been made for the committee for this period.

First, a follow-up survey on the renewed Port & Harbors was conducted, by launching two different types of questionnaire respectively addressed to members at large and to Exco members.

Though only very few responses were gained from Exco members, the reactions from ordinary members show that the renewed IAPH Journal has been widely accepted and well read among members. This observation is also perceived by the fact that the number of new subscription from non-members has picked up at a higher pace since its re-launch than ever before.

■ Renewal of IAPH website is another accomplishment the Committee has been proud to announce. The new website can be rivalled with those of other maritime organizations, with its user-friendliness, liveliness and issue/topic-oriented natures.

GROUP FOR PORT SAFETY, SECURITY AND ENVIRONMENT & CHAIRS

Port Safety & Security Committee

Peter W. Mollema

Director, Strategy Port Infrastructure and
Maritime Affairs
Port of Rotterdam Authority, The Netherlands



■ The major issues the committee is currently working on are,

- ISPS Code implementation:

UNCTAD ISPS Survey regarding cost recovery scheme was made and its results were compiled and reported to members.

- Supply Chain Security :

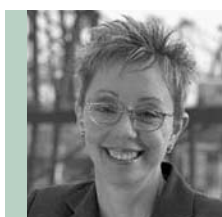
As a member of WCO Private Sector Consultative Group, IAPH Europe Office attended the meetings to discuss the issues about WCO Framework Standards. IAPH also attended the relevant meetings of ISO and monitor developments of PAS28000 series.

- LNG Best Practices : The committee collected relevant information and distributed to the association "Sandia Report" which shows general guidance on risk management on accidental and/or intentional spill of LNG.

Port Environment Committee

Geraldine Knatz, Ph.D.

Executive Director
Port of Los Angeles, U.S.A.



■ The major issues the committee is currently working on are,

- Waste Reception Facilities :

As a member party of "The shipping and port industry reception facility forum", IAPH participated the discussion to develop workable solutions for the problem. Forum's action plan was submitted to IMO Flag-State-Implementation sub-committee for drafting its action plan.

This issue was discussed among committee members at Mumbai meeting based on the paper prepared by Europe office.

- Air Emission Control and Alternative Maritime Power:

At Mumbai meeting, the committee discussed this issue based on the paper "Alternative Maritime Power" prepared by Europe office. The committee acknowledged IAPH's closely involvement of this issue and necessity of monitoring further developments.

- The London Convention :

The Chair of the committee attended the 27th meeting of the London Dumping Convention in October 2005. The 1996 Protocol to the London Convention 1972 entered into force on March 24, 2006. The 1996 Protocol shall prohibit the dumping of any wastes or other matters with the exception of listed materials including dredged material at port.

Legal Protection Committee

Frans J.W. van Zoelen

Head, Legal Affairs
Port of Rotterdam Authority, The Netherlands



■ The major issues the committee is currently working on are,

- Places of Refuge :

Comite Maritime International (CMI) proposed their draft new framework of legal instrument on Places of Refuge and held their Cape Town meeting to discuss the issue further in February 2006. IAPH attended the meeting and stated our opinion. The committee followed up the issue at Mumbai meeting based on the paper prepared by the Chair.

- Legal Data Base:

The revision of the "Legal Data Base" to update its contents was decided on Shanghai Conference meeting. The committee got report from vice chair that arrangement of the revision is under progress and will get more details at the next committee meeting from Chair.

GROUP FOR DEVELOPMENT, OPERATION AND FACILITATION & CHAIRS

Port Planning & Development Committee

Susumu Naruse

Vice Director General

Tohoku Regional Bureau, Ministry of Land,
Infrastructure and Transport, Japan



■ For the year 2005-2006, the committee was very busy in diverting its activities beyond the continued task of the study on cruise terminals, to various emerging issues like forecasts of container cargo throughput, and port development in BRIC's countries, in particular, China and India to start with. As for the comparative study of container throughput forecasts, the committee yet welcomes member's suggestion on methodologies to be applied when making up most likely scenarios for the future, while collecting data are well under way.

■ By taking the opportunities of IAPH meetings in Shanghai, and Mumbai, the committee has been supplied various cases of port development being, or will be undertaken in these two countries. We are confident that facts-oriented but yet suggestive report will come out by the Houston Conference 2007, thanks to a great cooperation from respective port sectors of both nations.

■ Driven by the recent Tsunami in Indian Ocean, and hurricanes hit over US Gulf Coast, the committee's activity went on further to study about Tsunami, and other natural disasters ports may encounter, in an attempt to collate and provide member ports with state-of-the-art knowledge and experiences about those disasters, thereby helping them implement preventive and protective measures against attacks. One of its attempts led to a symposium to be held at Exco meeting in Shizuoka, Japan, October 2006, inviting leading specialists, locally and globally.

Port Operation & Logistics Committee

José Luis Estrada

Port Planning & Development Director
Puertos del Estado, Spain



■ Having many new members, the committee added two new work plans, viz., "Measuring port productivity" and "Short Sea Shipping", to the ongoing study on "Port's roles on inter-modal logistics chains". Both new plans have just commenced a first step.

■ For the Short Sea Shipping, the committee to gather as many best practices as possible through our member ports, because this issue may be much influenced by various national/regional factors unique and different from port to port, as well as regionally.

■ As for the productivity of ports, although it is indeed not any easy challenge to us, the committee is aiming to propose a practical methodology for our member ports when considering improvements of their port efficiency. Some theoretical approaches have been evaluated to start with, and will be extended to the level of intellectuals which could be applied to actual port management.

Trade Facilitation & Port Community System Committee

Santiago Garcia-Milà

Deputy Managing Director

Deputy Management of Strategy and
Development

Autoritat Portuària de
Barcelona, Spain



■ The committee have been very active in various international organizations for years and the year 2005-2006 was not an exception. At WCO, by joining its International Management Sub-Committee (IMSC), IAPH has been involved in such projects like "WCO Customs Data Model", which is aimed at a closer integration of customs procedures among member countries, and "UCR (Unique Consignment Reference Number)" applicable for all international trading transactions.

■ The committee chair has been leading the discussion at UN/CEFACT by taking the Vice-Chairmanship. Activities involving IAPH at UN/CEFACT cover very extensively, such as development of electronic business standards (ebXML etc.), promotion and regulation of well-known "Single Window" concept, and recently launched "UneDocs" project aimed at accelerating paperless trade.

■ Work on Port Community System is now ongoing by collecting cases of member ports.

IAPH General Accounts (January 1 – December 31, 2005)

(Unit: Japanese Yen)

ITEMS		ACTUAL
Revenues in this Term		144,302,275
Membership Dues		136,346,856
	Regular Members	123,827,837
	Associate Members	12,519,019
	Temporary Members	0
Other Incomes		7,955,419
	Interest Received	3,247,751
	Advertisement	2,871,664
	Sales of Publications	1,122,274
Miscellaneous		713,730
Expenses in this Term		134,241,629
Personnel Expenses		57,383,830
Non-personnel Expenses		76,857,799
	Office Expenses	12,683,258
	Correspondence & Communications	2,411,155
	Publications	22,736,392
	Information Services	731,851
	Overseas Travel Expenses	5,807,63
	Social Expenses	642,710
	Conference Expenses	10,712,999
	Miscellaneous	1,017,580
	IAPH Liaison Work	17,186,275
	Technical Com. Financial Support	2,415,003
	Strategic Action Projects	512,944
Balance for this Term		10,060,646

Secretariat

Head Office

Address:

7th Floor, South Tower, New Pier Takeshiba
1-16-1 Kaigan, Minato-ku, Tokyo,
105-0022 Japan

Phone: +81 3 5403 2770

Fax: +81 3 5403 7651

E-mail: info@iaphworldports.org

Secretary General

Dr. Satoshi Inoue

Deputy Secretary General

Tatsuki Hioka

Under Secretary

Financial & General Affairs

Yasuo Miura

Under Secretary

Maritime Affairs

Hisayoshi Tokui

Assistant Under Secretary

Internal & External Communications

(Ports & Harbors, IAPH Online Newsletter)

Yuko Akamatsu

ph@iaphworldports.org

Assistant Under Secretary

Membership Affairs and Web Master

Hiroyuki Nagai

info@iaphworldports.org

Staff

Accounting & Office Administration

Chizuko Mita

Staff

Library & Mailing

Yoko Kuriya

Staff

Membership Coordination & Logistics

(Meeting Arrangements, Membership Directory)

Aya Fujinami

newsletter@iaphworldports.org

Europe Office

Address:

C/O Maritime Simulation Rotterdam b.u.

Wilhelminakade 701

3072 AP Rotterdam

P.O. Box 51290, 3007 CG Rotterdam

The Netherlands

Phone: +31 10 486 6654

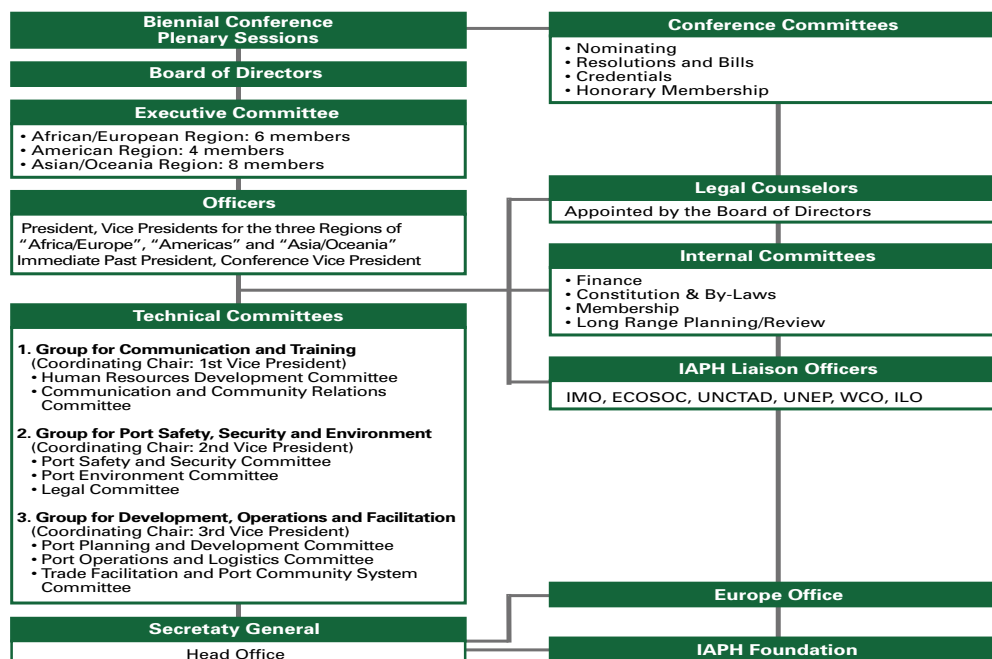
Fax: +31 10 484 6071

E-mail: fvdlaar@msr-r.nl

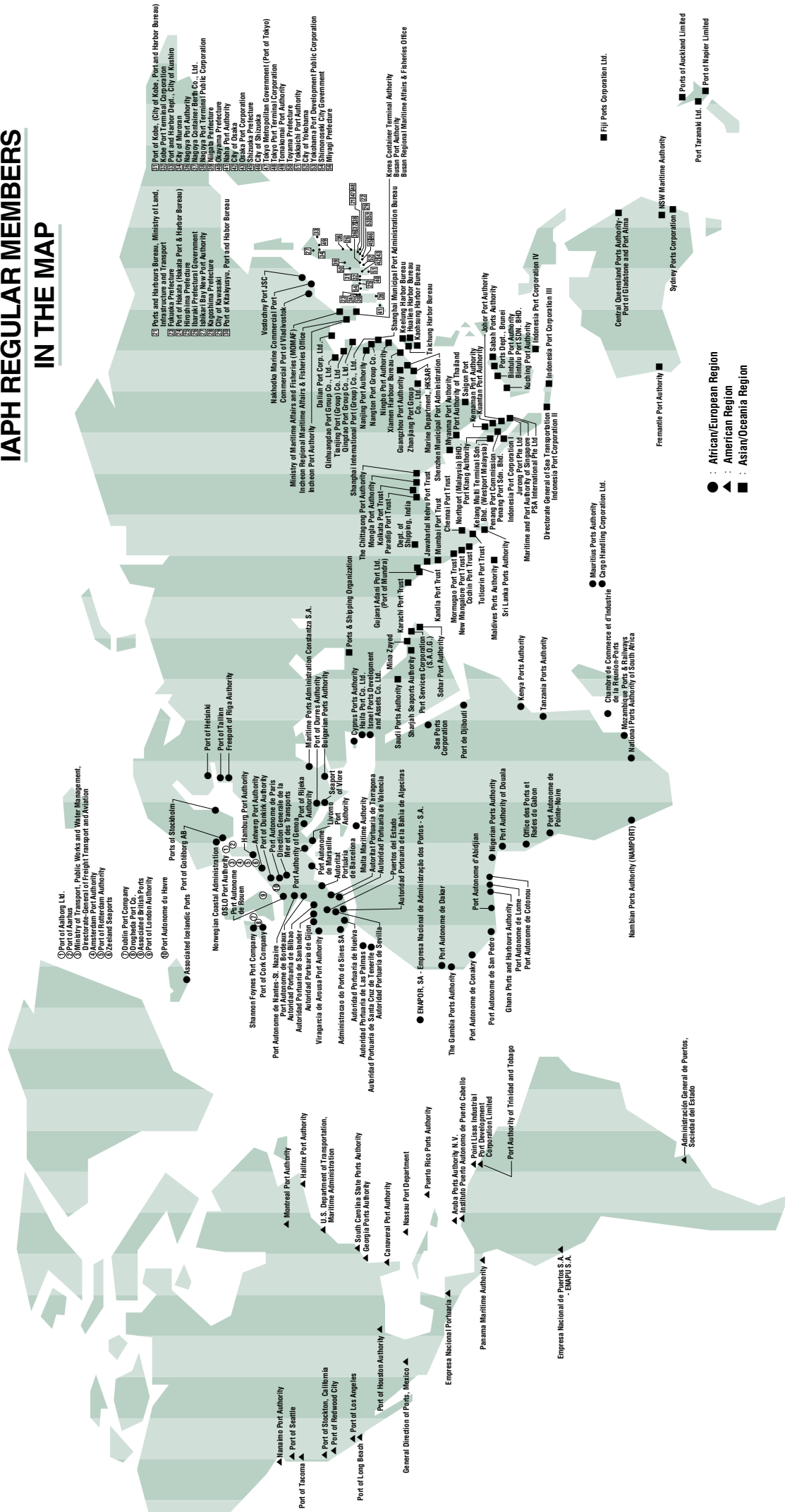
Managing Director

Fer M. J. van de Laar

Structure of IAPH



GRAPH REGULAR MEMBERS IN THE MAP





IAPH The International Association of Ports and Harbors

7th fl. South Tower, New Pier Takeshiba, 1-16-1 Kaigan, Minato-ku, Tokyo 105-0022, Japan

TEL.03-5403-2770 FAX.03-5403-7651

URL <http://www.iaphworldports.org>

E-mail info@iaphworldports.org