

Decarbonization and climate resilience



Sustainable Port Congress - Bilbao, 8 November 2022

Antonis Michail, Technical Director IAPH / WPSP



Founded in 1955, IAPH is the global port alliance, representing today around 170 port regular members and 126 associate members linked to ports in 87 countries. Together, IAPH port members handle more than one third of global maritime traffic and more than 60% of container traffic.

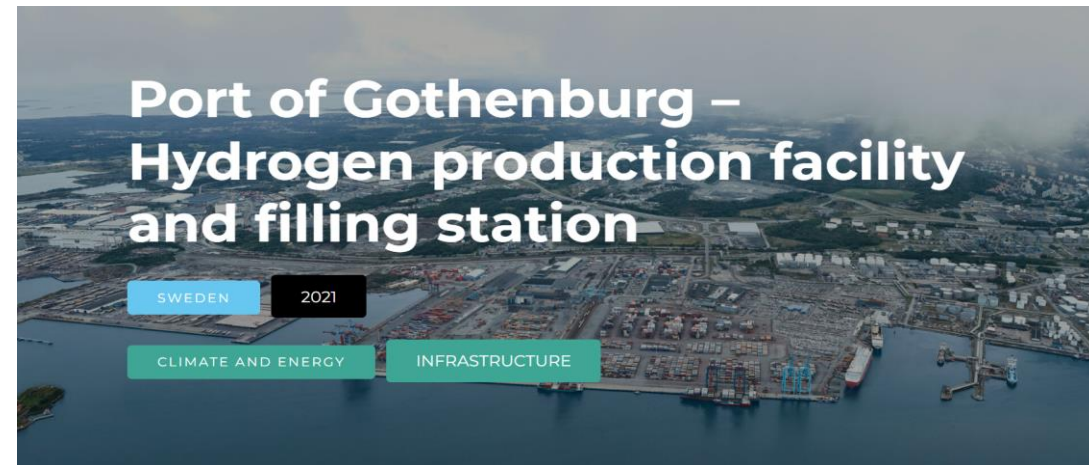
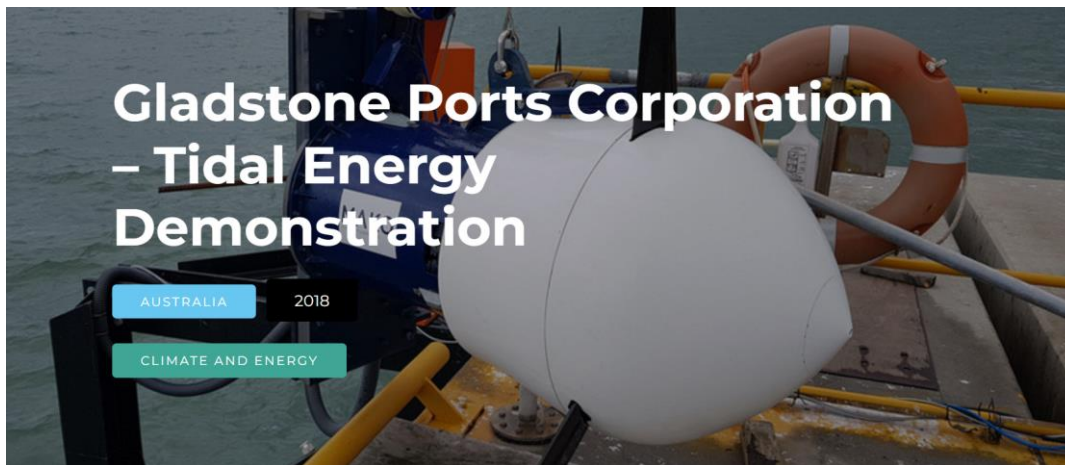
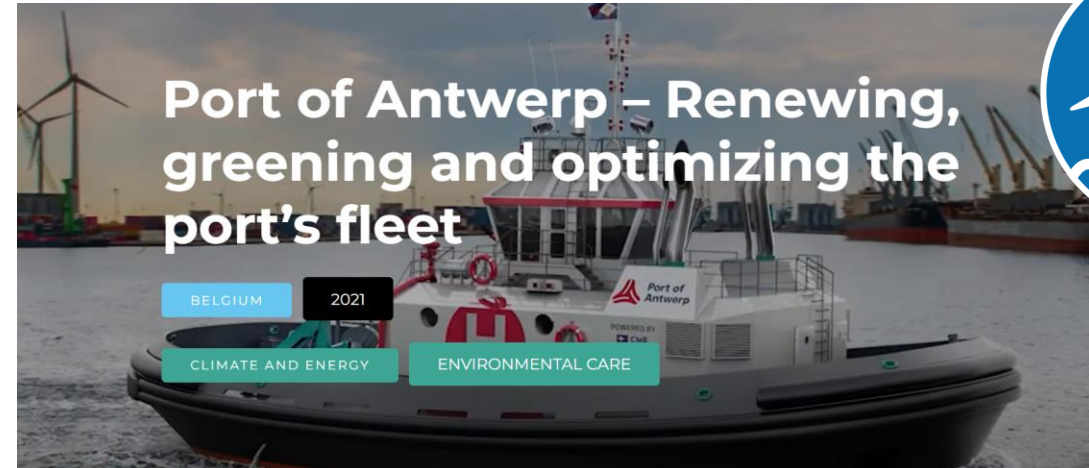
IAPH has a consultative status and represents the interests of world ports at IMO and additional UN agencies such as the ILO, UNCITRAL, UNCTAD (UN Conference on Trade and Development), UNEP (UN Environment Program) and the UN Global Compact.

IAPH works closely with the World Bank, and World Customs Organization, the Global Maritime Forum, and World Economic Forum.

Three strategic focus areas: Risk and Resilience, Data Collaboration, Climate and Energy

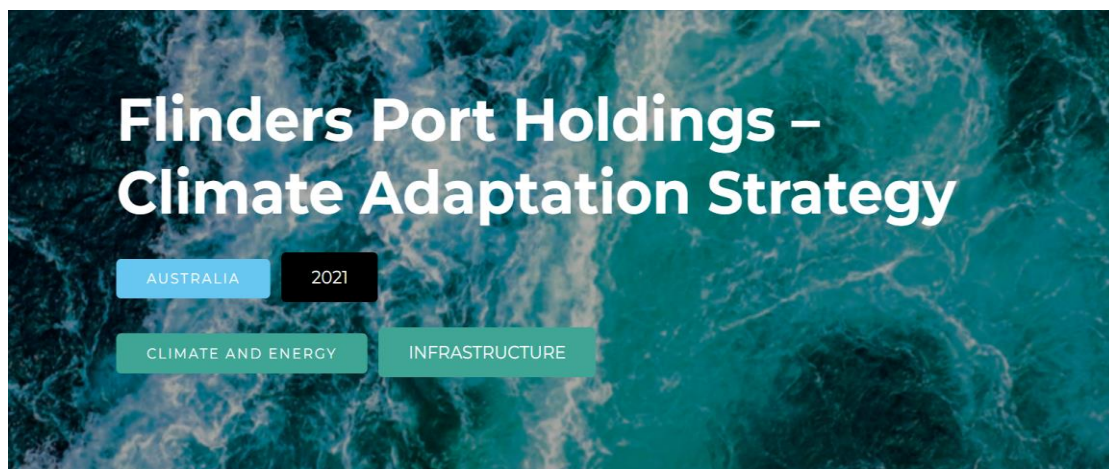
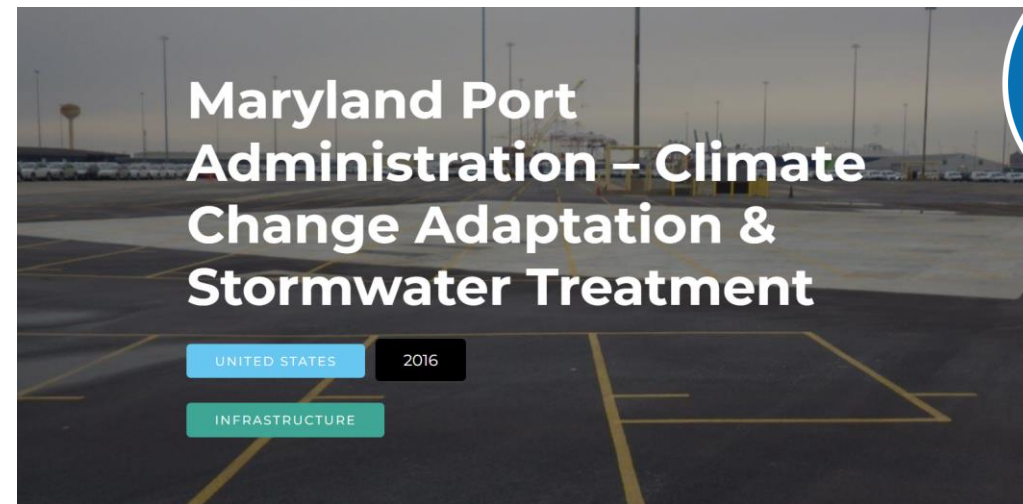


WPSP Portfolio – Climate mitigation



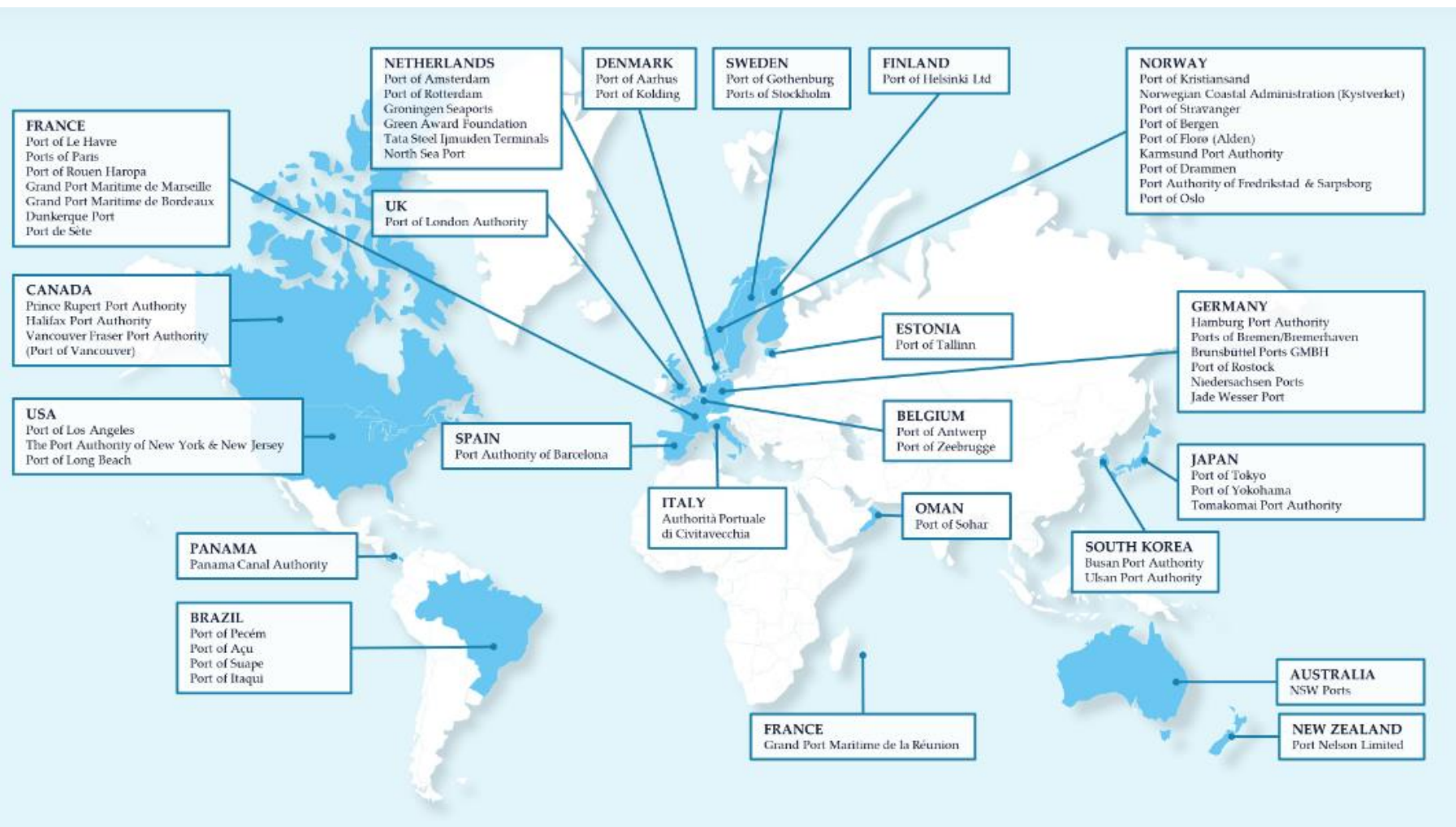
<https://sustainableworldports.org/portfolio/type/port-projects/>

WPSP Portfolio – Climate adaptation



<https://sustainableworldports.org/submit-your-project/>

IAPH Environmental Ship Index (ESI)



- The standard Index used by ports worldwide for the provision of incentives to best performing vessels
- 7000 vessels
- 60 Incentive providers
- ESI 2.0 + ESI at berth

<https://www.environmentalshipindex.org>

IAPH Clean Marine Fuels WG

Clean Marine Fuels

About

LNG as a fuel ▶

Hydrogen as a fuel

Methanol as a fuel

Ammonia as a fuel

Database of reports and report reviews on alternative marine fuels

Clean Marine Fuels



<https://sustainableworldports.org/clean-marine-fuels/>

IAPH contribution to IMO MEPC 79

7

1. IAPH calls for setting zero emissions target by 2050 for the international shipping sector in the revised IMO GHG Strategy.
 2. IAPH calls for an early implementation, by 2025, of a global MBM to bridge the price gap between conventional and low- and zero-carbon fuels.
 3. IAPH argues that the strategic allocation of MBM generated revenues can contribute to a just and equitable energy transition of shipping.
- Ensuring a just and equitable transition is key to unlock the discussion at IMO and achieve the much-needed progress

Thank you!

Antonis Michail, Technical Director
antonis.michail@iaphworldports.org

