

Data collaboration in ports and maritime supply chains

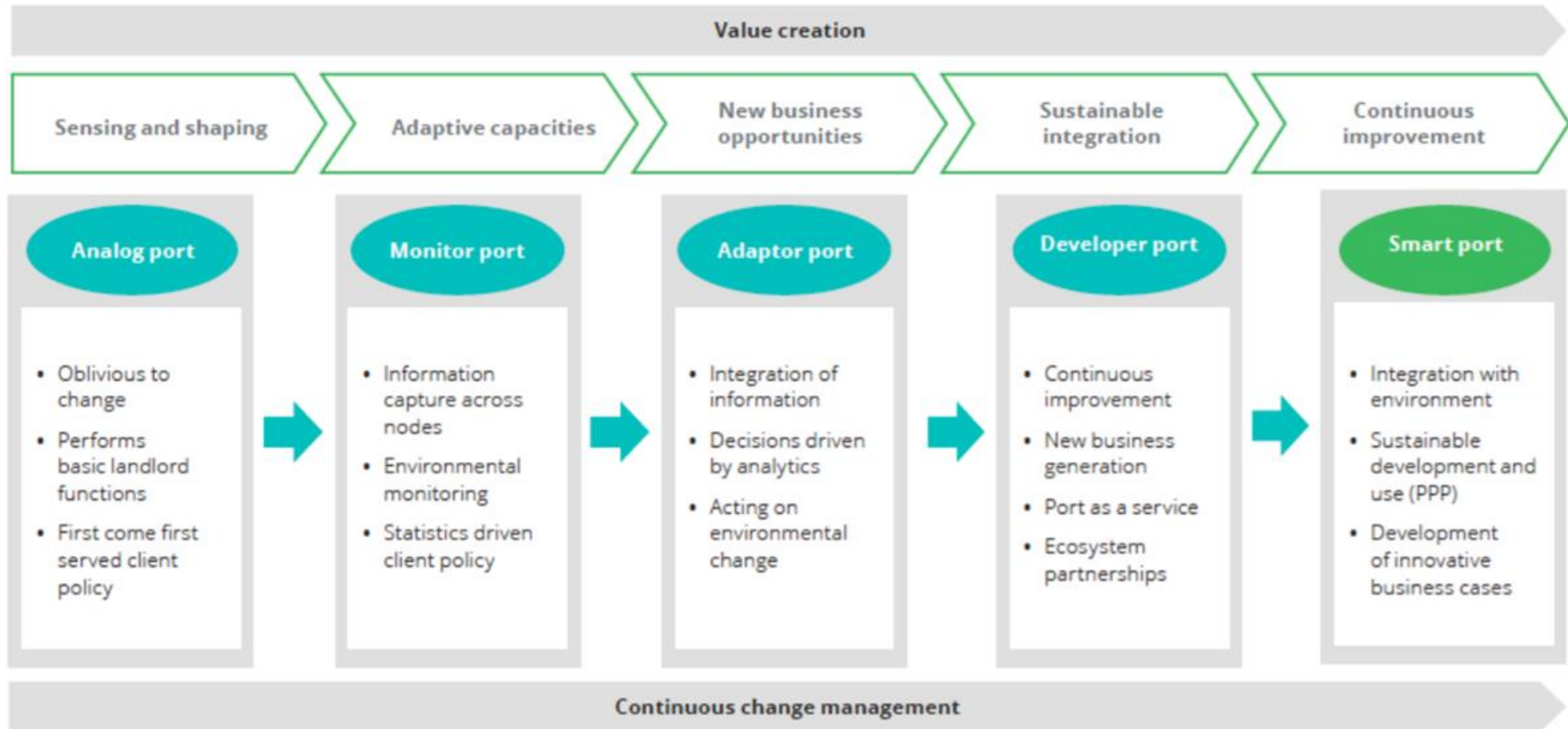


MEDPorts Forum – 7 July 2022

Patrick Verhoeven



The 'smart port' concept



Source: Deloitte (2017)

The basics: IMO FAL requirements

How would you describe the status of implementing electronic data exchange at your port(s) following the IMO FAL requirement?

Answer choices	Responses %	Responses actual
No action yet / inception stage	31.53%	35
Design stage	17.12%	19
Implementation stage	17.12%	19
Operational stage	34.23%	38
TOTAL		111



Source: IAPH (2020)

The basics: IMO Maritime Single Window



[ABOUT IMO](#) ▾

[MEDIA CENTRE](#) ▾

[OUR WORK](#) ▾

[PUBLICATIONS](#) ▾

[KNOWLEDGE CENTRE](#) ▾



23 May 2022

Single window for ship data exchange to become mandatory



Roadmap to accelerate maritime digitalisation

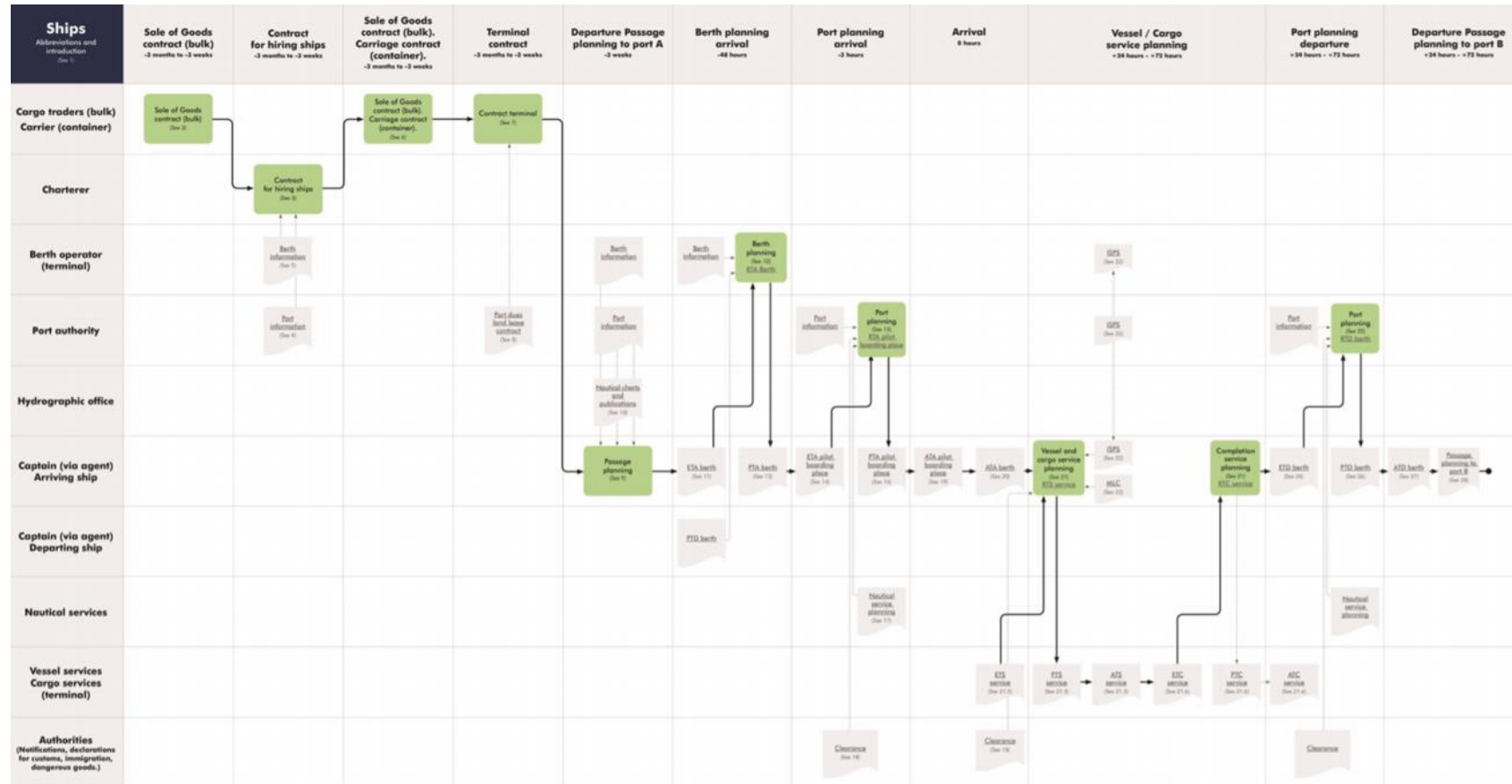
6



Source: World Bank / IAPH (2021)

Port call optimisation

7 |



Source: IMO / International Task Force Port Call Optimisation (2020) – www.portcalloptimization.org

What the ultimate port customer wants



Speed	Vessel arrival – discharge – availability Empty release – empty receiving Grey pool chassis access Connectivity: rail, inland waterways, dry ports
Predictability	Vessel working schedules Cargo receiving windows Cargo availability dates Appointment systems Gate hours Fees
Alignment with cargo owner experience	Service delivery in context Customs and government agency activity Local circumstances Weather effects
Go-to for exception handling	Clarity in roles and responsibilities Co-ordination with service partners Escalation Record-keeping and follow-through

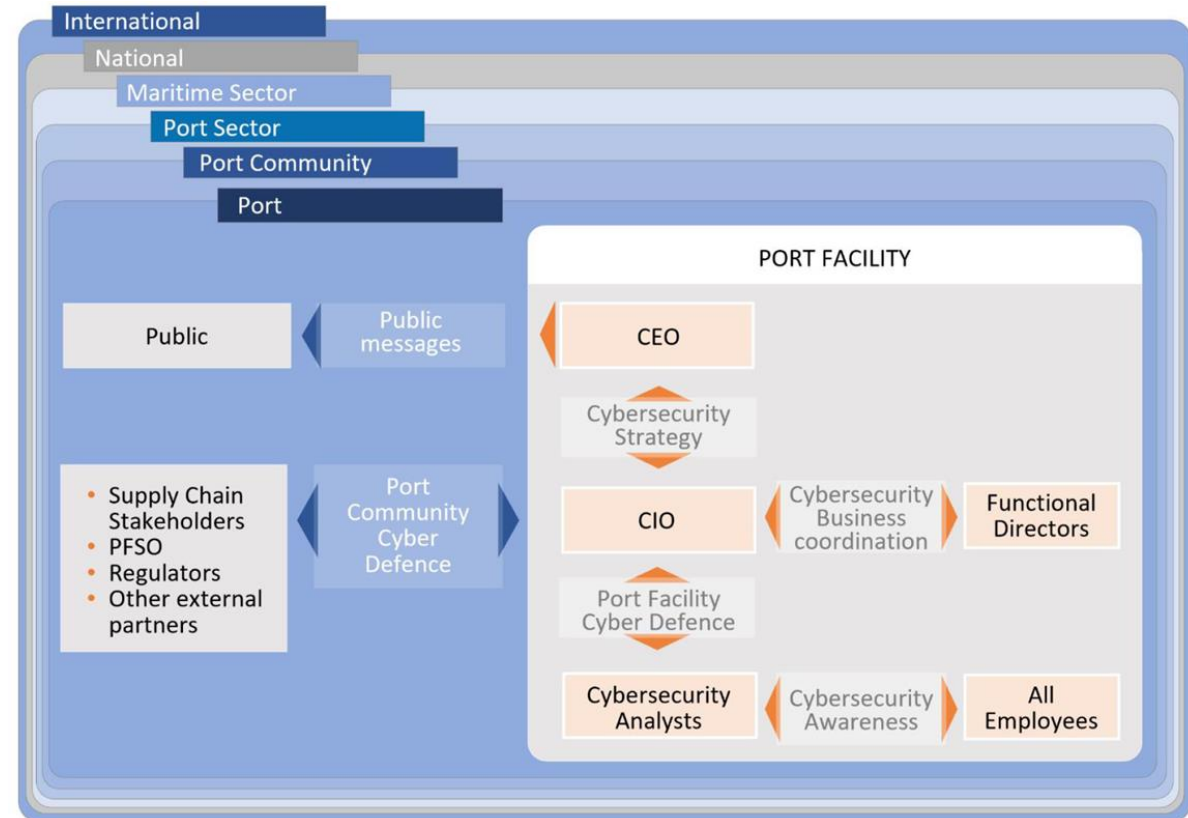
Cybersecurity

9



IAPH Cybersecurity Guidelines for Ports and Port Facilities

Version 1.0



Source: IAPH (2021)

Thank you!

Patrick Verhoeven
Managing Director, IAPH
patrick.verhoeven@iaphworldports.org

