



THE 30th IAPH WORLD PORTS CONFERENCE

7 - 12 May 2017

Bali Nusa Dua Convention Center, Bali - Indonesia

COLLABORATION OPPORTUNITIES TO STRENGTHEN COOPERATION AND SUSTAINABILITY AMONG PORT From Indonesia Port's Perspective

Elvyn G. Masassya

PRESIDENT DIRECTOR OF INDONESIA PORT CORP II



Session 5

Enabling Trade. Energizing The World

IPC'S PROFILE





CORPORATE **Vision**

“To Become a World Class
Port, Excellent in
Operation and Services”

IPC Services & Branches



SHIP SERVICE

- Anchorage Service
- Mooring Service
- Pilotage Service



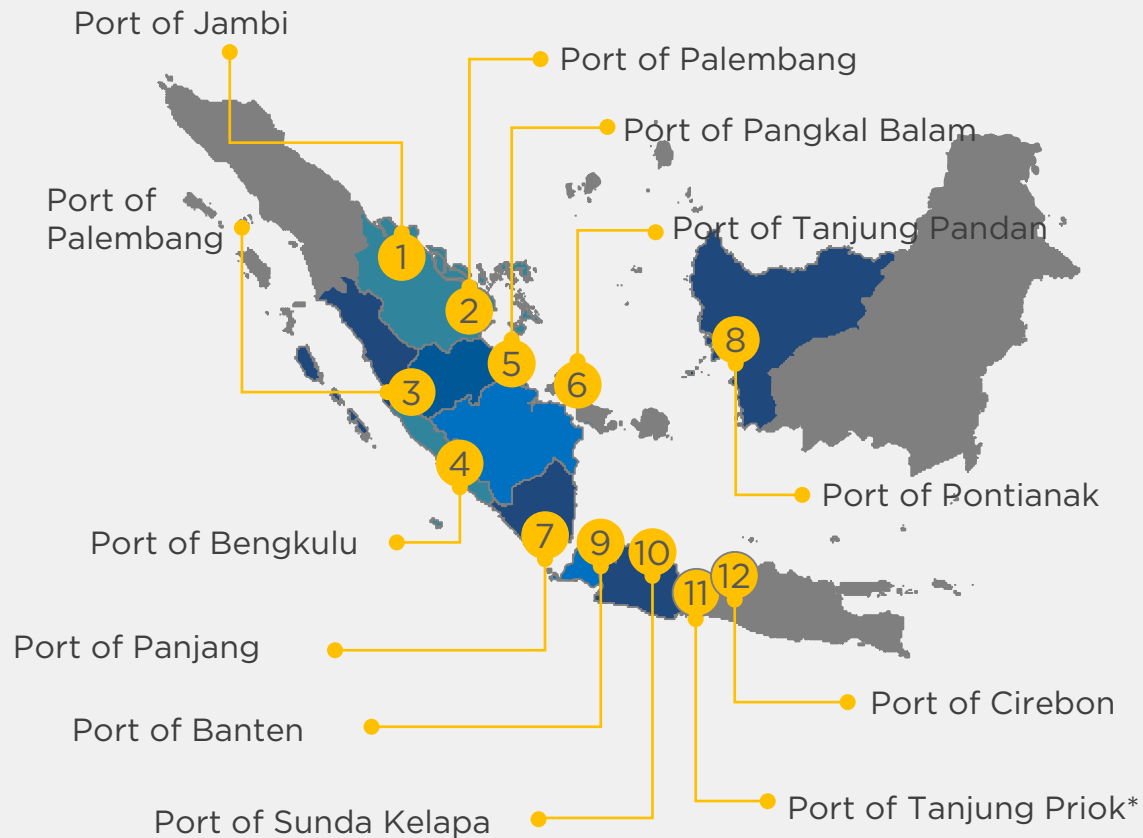
CARGO SERVICE

- Public Berth
- Storage Warehouse



OTHER SERVICES

- Port Equipment maintenance Services
- Land rental, Buildings, Water and Electricity



*Main port

IPC Subsidiaries



TPK KOJA

Container Terminal



PT. MTI

Logistic Services



PT. IPC TPK

Terminal Operator



PT. ILCS

System Information



PT. RSP

Hospital Operation



PT. TPI

Terminal Operator



PT. JAI

Marine Operator



PT. EPI

Eco Power



PT. PPI

Port Developer



JICT

Container Terminal



RUKINDO

Dredging & Shipyard



PT. EDII

System Information



PT. IKT

Car Terminal



PT. PTP

Terminal Operator



PMLI

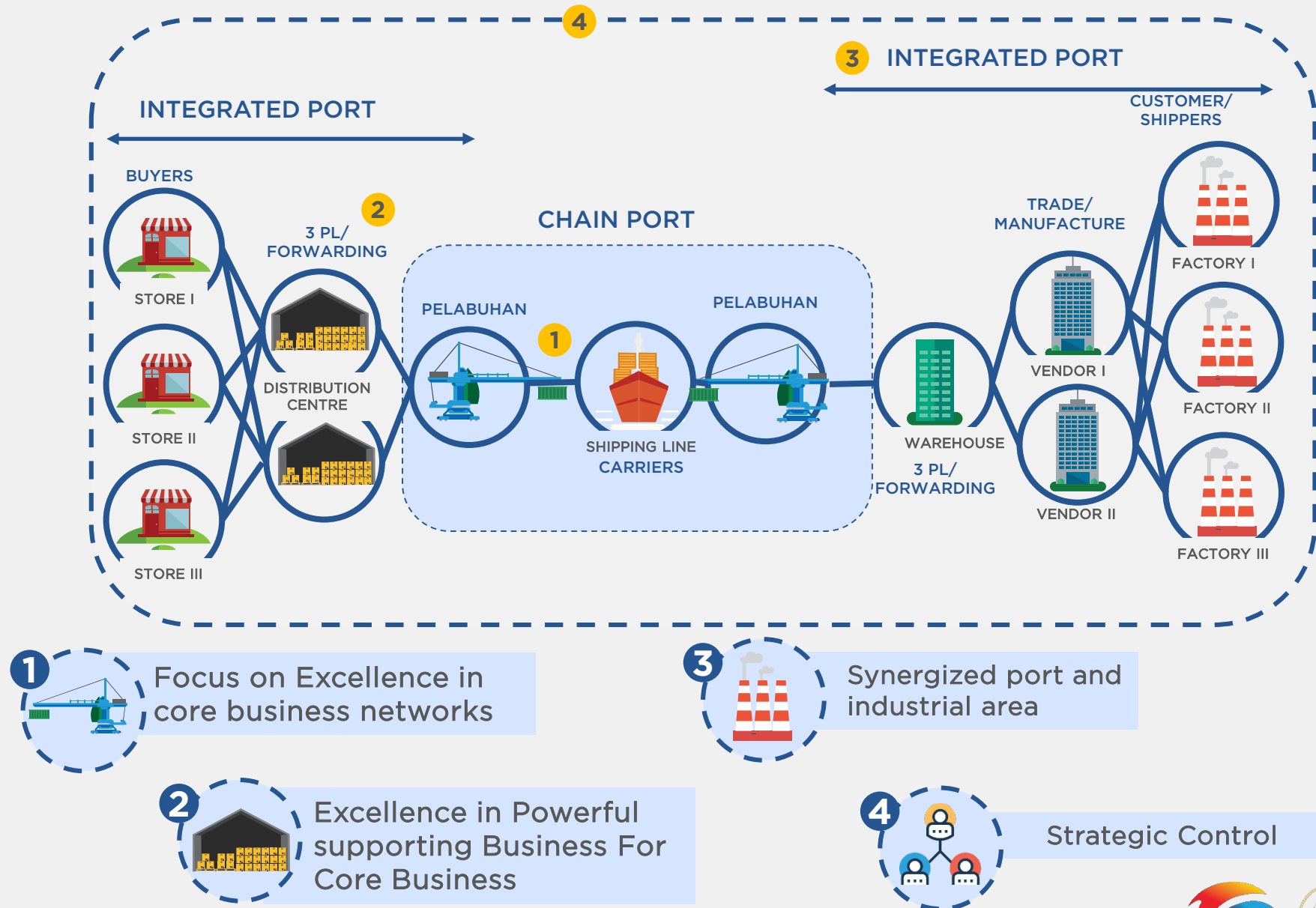
Corporate University



JPPI

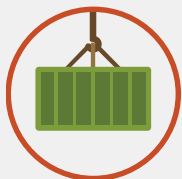
Equipment Services

Corporate Strategy : Integrated Port Network



Corporate Roadmap

1 2016



FIT IN INFRASTRUCTURE

Fine tuning in every area

- ✓ **Governance :**
Business Process, SOP, Structure
- ✓ **Culture**
- ✓ Corporate & Sub Business Model/ Restructuring
- ✓ **Re-define Business**

2 2017



ENHANCEMENT

strengthening/
enhancing business

- ✓ **Operational & Service improvement**
- ✓ **Expansion of Subsidiaries**
- ✓ **Infrastructure Development** (Greenfield Project and brownfield project)
- ✓ **Optimize IT Utilization**

3 2018



ESTABLISHMENT

Establishment of
performance

- ✓ **Volume Growth**
- ✓ **Profitability Growth**
- ✓ **Holding Establishment** (Synergize among BUMN)

4 2019



SUSTAINABLE

Sustainable
superior
performance

- ✓ First Operation of **4 Strategic project**
- ✓ Implementation of **Integrated port Network**
- ✓ Implementation **National Connectivity Program**
- ✓ Initiation of **global foot print**

5 2020



WORLD CLASS

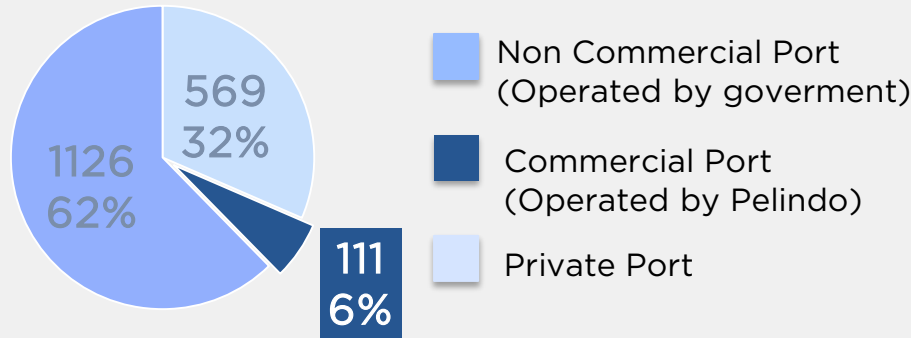
World class
performance

- ✓ Establishment of **Global foot print.**
- ✓ Establishment of **world class terminal operator**
- ✓ Implementation of **green port & smart port**
- ✓ Excellence competing subsidiaries in their respective industry & world class standard

IPC'S COLLABORATION AMONG INDONESIA PORT COMMUNITY



Indonesia Port's Profile



There are +/- 1,808 ports in Indonesia consisting of 3 categories; 65 ports are main ports operated by Pelindo I-IV



Collaboration among ports **is needed** to reduce logistic cost



Commercial Ports in Indonesia act as a **Landlord** and **Port Operator**

Digitalization & Collaboration should be implemented **AMONG PORTS** and **PORT COMMUNITY**

IPC & Other Port Community Actors are Transforming..



OPERATIONS & SECURITY



- ✓ Improvement of port infrastructure
- ✓ Improvement of port operation
- ✓ Improvement of Port Safety

To improve Level of Services



SMART PORT TECHNOLOGY

Portal Layanan Kepelabuhan Yang Terintegrasi

- ✓ Implementation of Digital Port (Autotally, TOS, Integrated Billing System, etc)
- ✓ Connectivity Improvement among port community (Inaportnet, E- Service Portal, etc)

To Minimized administrative burden

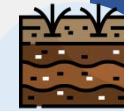


INTEGRATED PORT



- ✓ Construction of toll Road port - Industrial Area
- ✓ Establish cooperation with industrial estate Company

To improve hinterland connectivity



DREDGING



- ✓ PT Rukindo as the agent of Dredging Activities for Indonesia's port

To be able serving large ships

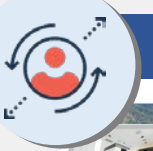


PORT PLANNING



- ✓ Implementation of Berthing Window

To Optimize Berthing Allocation



HUMAN RESOURCE



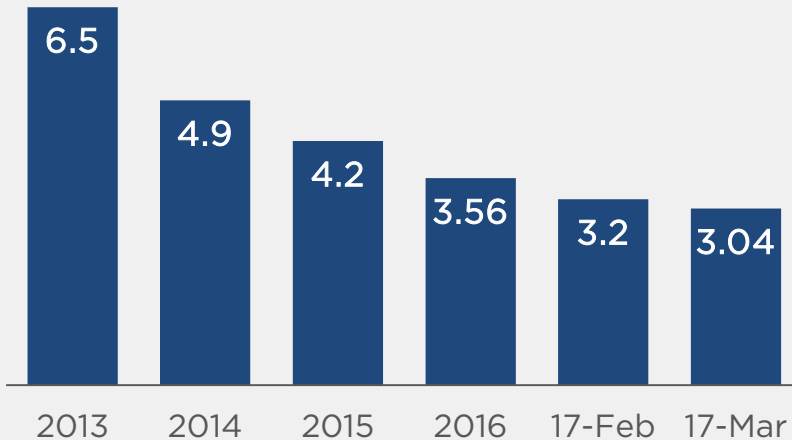
- ✓ IPC Corporate University as the center of Human Resource development

To Develop Human Resources



DWELLING TIME IN 2017

Dwelling time is improving for the last 4 years



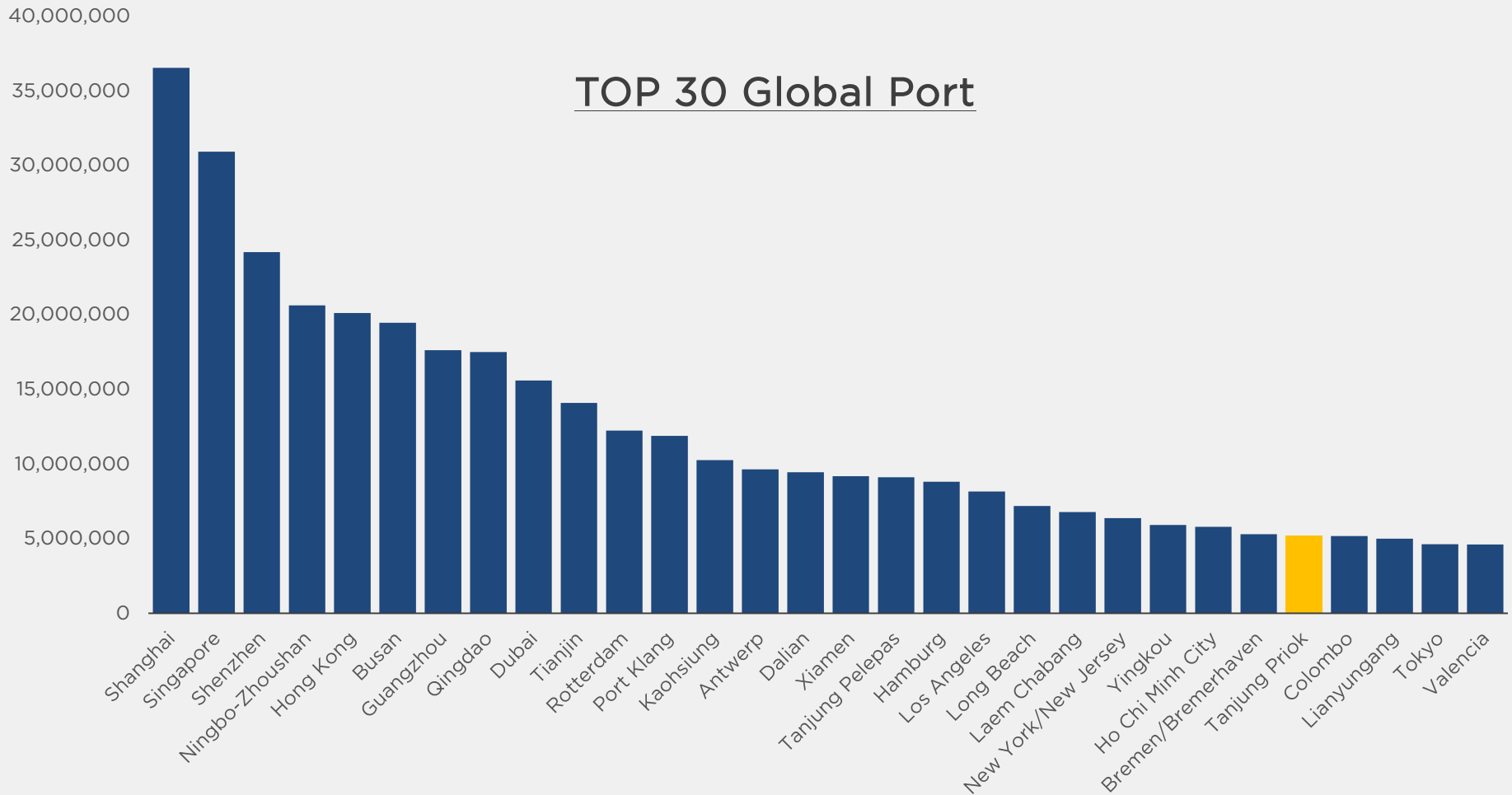
The result of collaboration among port and other logistic supply actors, especially optimization of IT system in supply chain activities.



IMPROVEMENT OF INFRASTRUCTURE



The **8,238 TEUs vessel** berthed on the Jakarta International Container Terminal on Sunday (23/4) to transport containers to the West Coast in USA.



Source : Alphaliner

Based on 2015 throughput, Tanjung Priok - Indonesia is ranked 26th

Expectation of International Port Community Collaboration



■ Support for our National Strategic Projects

- New Priok Container Terminal
- Kijing Port
- Sorong Port
- Cikarang Bekasi Laut (Canal)
- Cibitung - Cilincing Toll Road
- Tanjung Carat

■ Actionable intelligence and systems

- Design parameters and concerns to be address
- Trying not to reinvent the wheel, if it exists and fits use it!

■ Experience

- What has worked well?
- How have things gone wrong?

■ Understanding the value chain in our port

- Making our processes and procedures efficient and effective
- Ensuring transparency through being a SMART PORT using the cloud, social media and collaborative tools to provide information and communications

■ Speed and precision

- Do it faster whilst making less errors
- To leapfrog to the best systems and processes

Strategic Project

NEW PRIOK CONTAINER TERMINAL



- ❑ **Location** : Tanjung Priok, Jakarta
- ❑ **Type** : Container and Liquid Bulk Terminal
- ❑ **Investment** : Rp 36 Trillion
- ❑ **Current Progress** :
 - Full Commercial operation for CT 1 on August 2016;
 - Development Phase 1 (CT 2; CT 3; PT 1; PT 2)
- ❑ **Development Period** : 2012 - 2027
- ❑ **Investment Opportunities**:
 - Terminal Operator Partner for CT2 & CT3
 - Terminal Operator Partner for PT1 & PT2

KIJING PORT



- ❑ **Location** : West Kalimantan
- ❑ **Type** : Container, Bulk Multipurpose Terminal
- ❑ **Total Area** : 1350 Ha
- ❑ **Total Investment** : Rp 5,1 Trillion
- ❑ **Construction Plan** : 2017
- ❑ **Operation Plan** : 2020
- ❑ **Investment Opportunities**:
 - Contractor (Container, Bulk, Multipurpose)
 - Terminal Operator Partner (Container, Bulk, Multipurpose)
 - Bargaining Operator

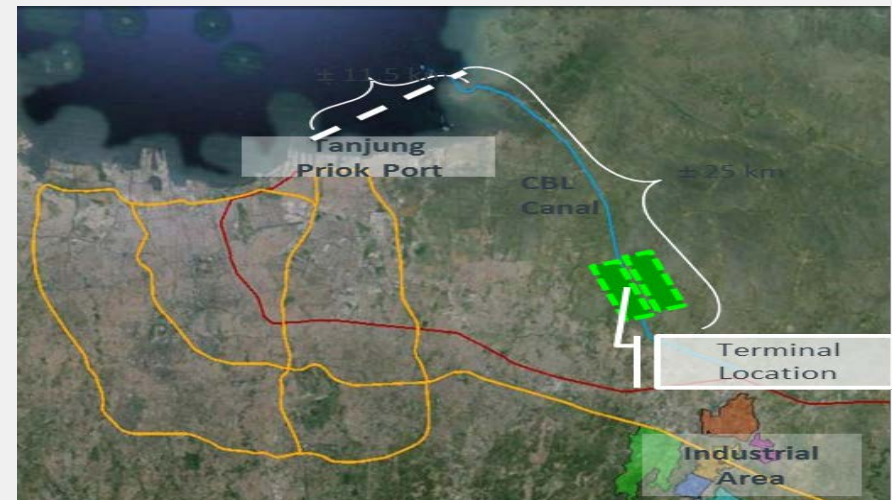
Strategic Project

SORONG PORT



- ❑ **Location** : Seget District, West Papua
- ❑ **Type**: Container Terminal
- ❑ **Total Investment** : Rp 2,4 Trillion
- ❑ **Construction Plan**: 2017
- ❑ **Operation Plan** : 2020
- ❑ **Investment Opportunities**:
 - Contractor
 - Terminal Operator Partner
 - Development Company Partner
 - Investor for Industrial Zone (fishery, mining)

CIKARANG BEKASI LAUT (CANAL)



- ❑ **Location** : Cikarang-Bekasi, West Java
- ❑ **Type** : Canal
- ❑ **Total Area** : 200 Ha
- ❑ **Capacity** : 1.6 Million TEUs/year
- ❑ **Total Investment** : Rp 5 Trillion
- ❑ **Investment Opportunities**:
 - Terminal Contractor
 - Capital & Maintenance Dredging Works
 - Barge Operator
 - Terminal Operator
 - Traffic/Navigational Equipment Provider

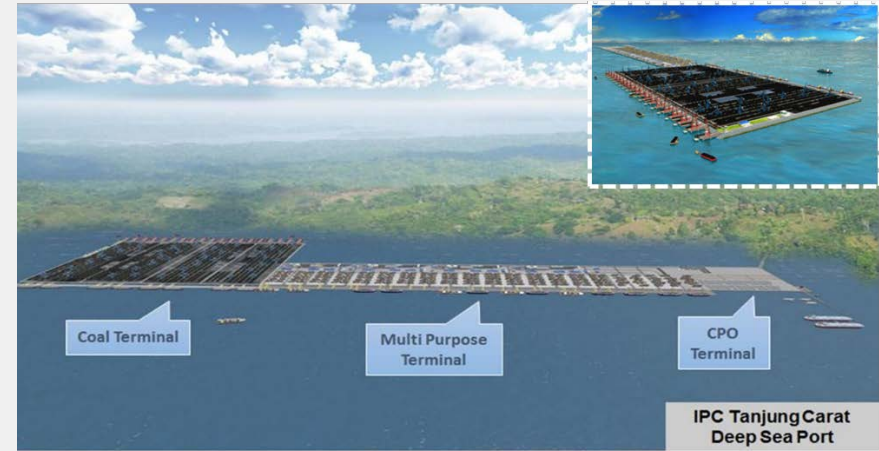
Strategic Project

CIBITUNG - CILINCING TOLL ROAD



- ❑ **Location :** Jakarta & West Java
- ❑ **Type:** Toll Road
- ❑ **Construction Plan:** 2017
- ❑ **Operation Plan** : 2019
- ❑ **Investment Opportunities:**
 - Contractor
 - Development Company Partner

TANJUNG CARAT



- ❑ **Location :** South Sumatera
- ❑ **Type:** Dry bulk, Container, Liquid & Ro-ro
- ❑ **Construction Plan:** 2017
- ❑ **Operation Plan** : 2019
- ❑ **Investment Opportunities:**
 - Contractor
 - Terminal Operator Partner
 - Development Company Partner
 - Investor for Industrial Zone (fishery, mining)

Thank You

THE 30th IAPH WORLD PORTS CONFERENCE
7 - 12 May 2017, Bali Nusa Dua Convention Center, Bali - Indonesia

