



PORT OF THE FUTURE

smartPORT

Intelligent networks and communication

Our Port – in the middle of the city – has its special challenges

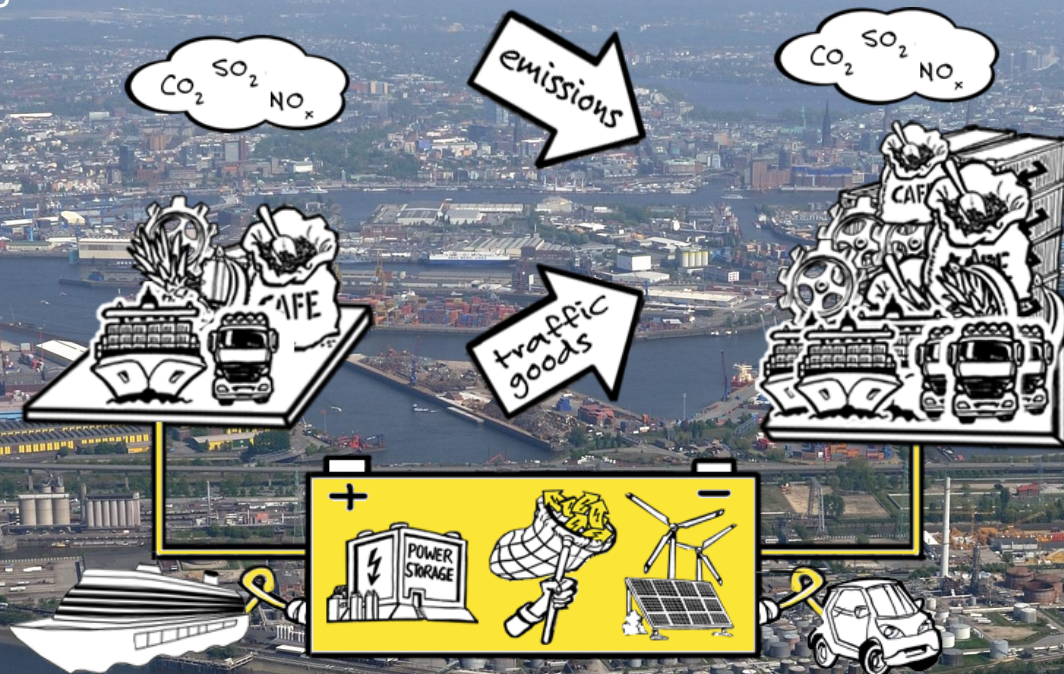
- Increasing the sustainability and quality requirements of our customers
- Increasing the quantities of goods
- Increasing the traffic volume
- Reducing the emissions



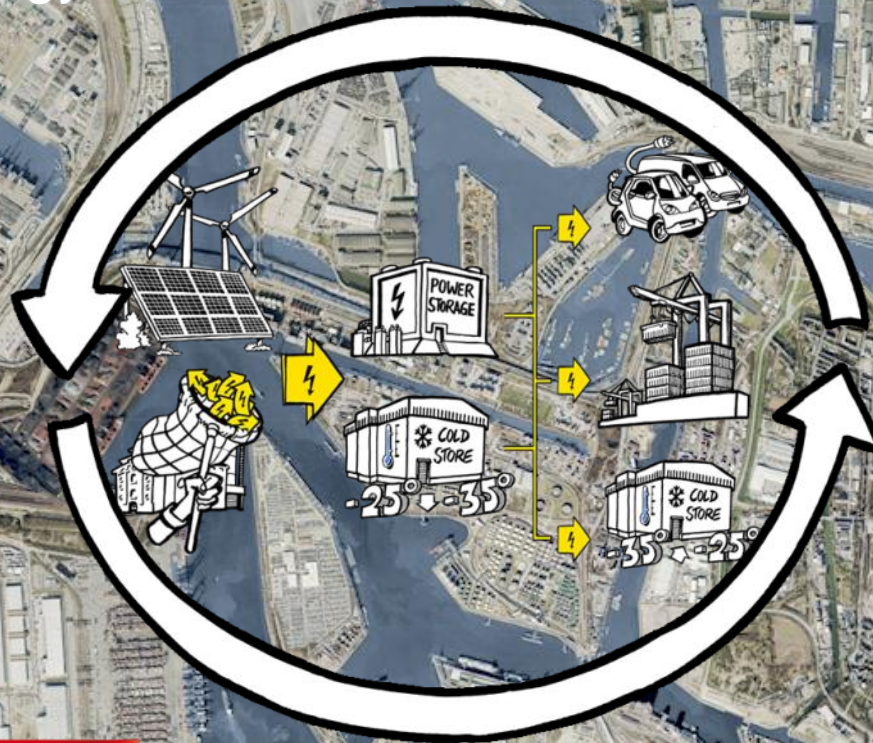
smartPORT has several focuses



smartPORT energy – More traffic and goods: fewer emissions



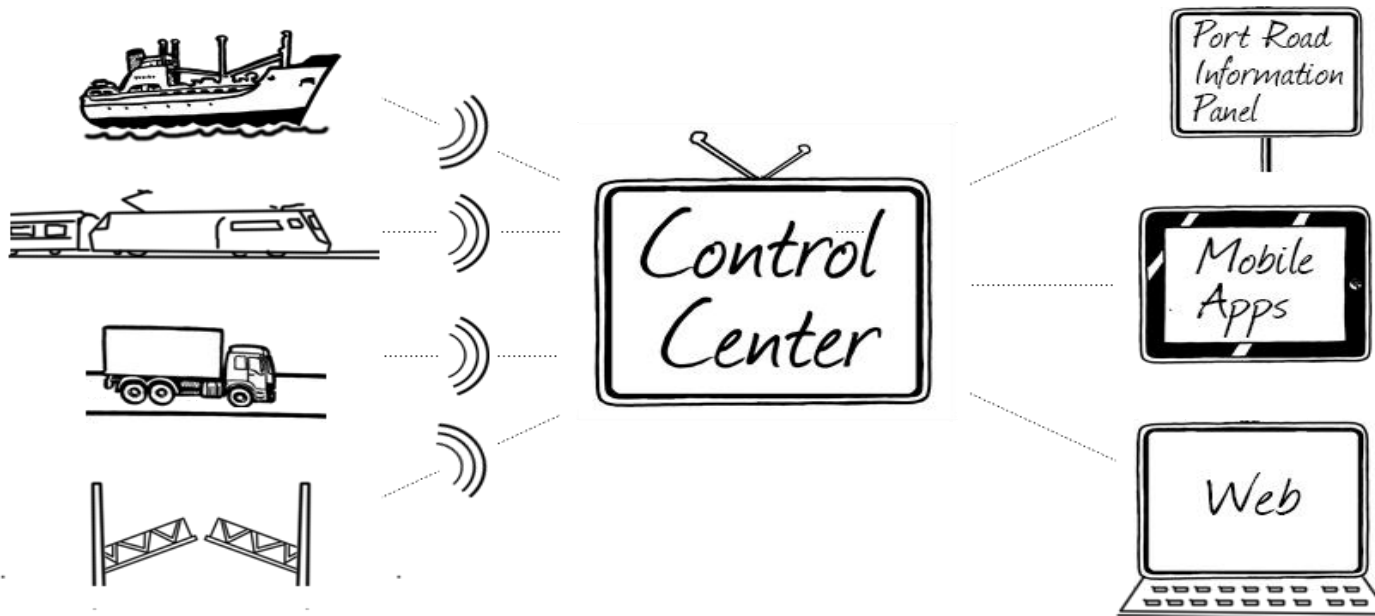
smartPORT energy



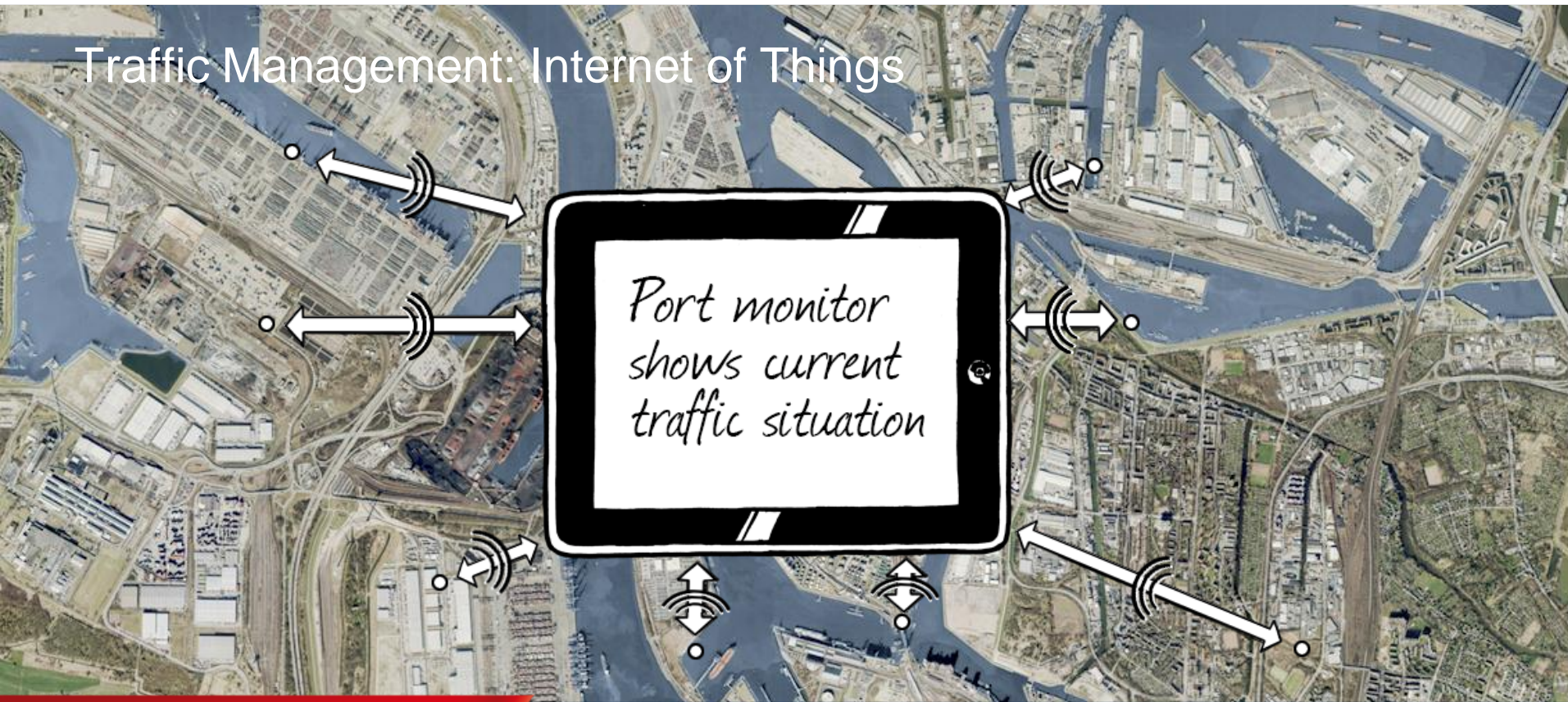
smartPORT logistics – Same area: More goods



Traffic Management: The Vision – a Port Traffic Center

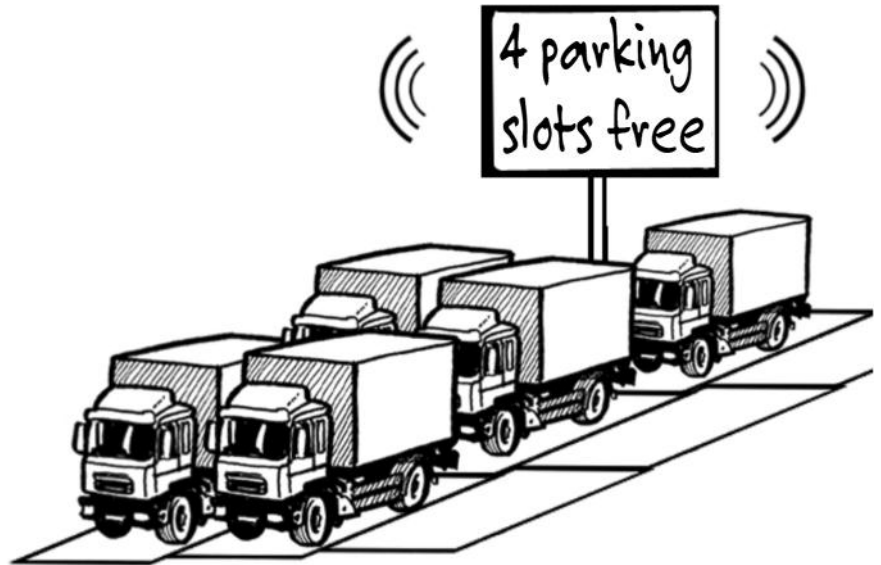


Traffic Management: Internet of Things

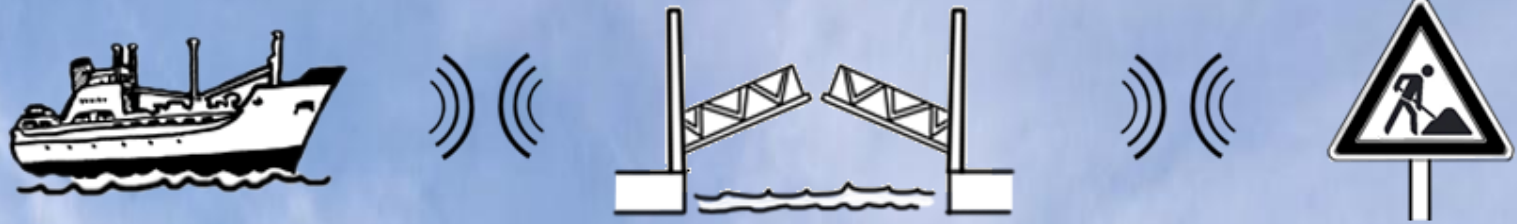


smartPARKING

- Depending on geofences and position of trucks free parking space is allocated for truck drivers
- Depending on traffic situation, target and forecasts the parking space for each truck is calculated
- Trucks park „bumper to bumper“
- More trucks in same space



Integration: Traffic and Infrastructure Management



Big Data: „sensing“ and avoiding traffic jams

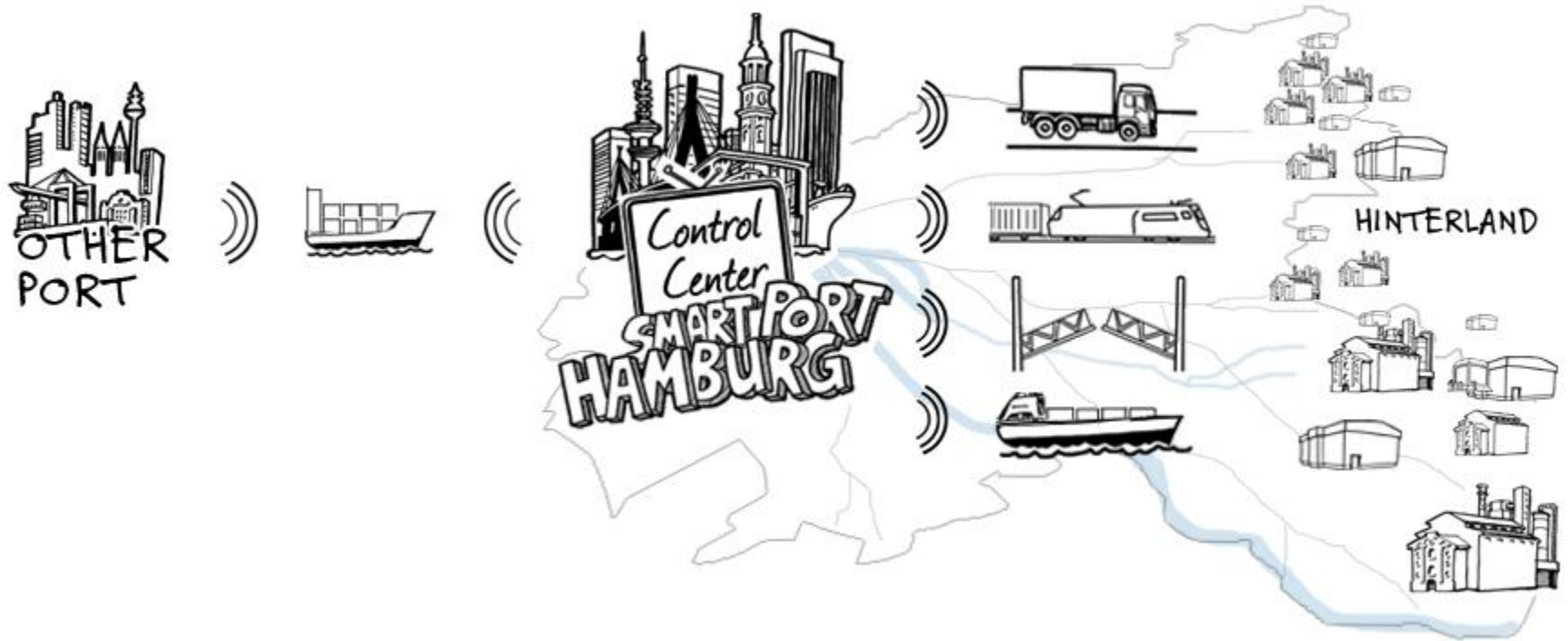


Traffic management

- Pervasive
- Instantaneous Speed
- Sensing
- Motion and Reaction
- Real Time

Port Traffic Center

- Knowledge
- Decision-making
- Memory
- Forecasts



smartPORT benefits our environment as well as the companies





City of Hamburg – Calling at the smartPORT (June 1st - 5th 2015)

IAPHAMBURG2015
29th WORLD PORTS CONFERENCE

Contact details:

Hamburger Port Authority AöR

Neuer Wandrahm 4

20457 Hamburg

Germany

www.hamburg-port-authority.de

Lutz M. Birke

Phone.: +49 (0) 40 428 47 – 28 28

E-Mail: lutz.birke@hpa.hamburg.de

