



America's Port

IAPH – Bay Area Ports and Urban City Integrated Development

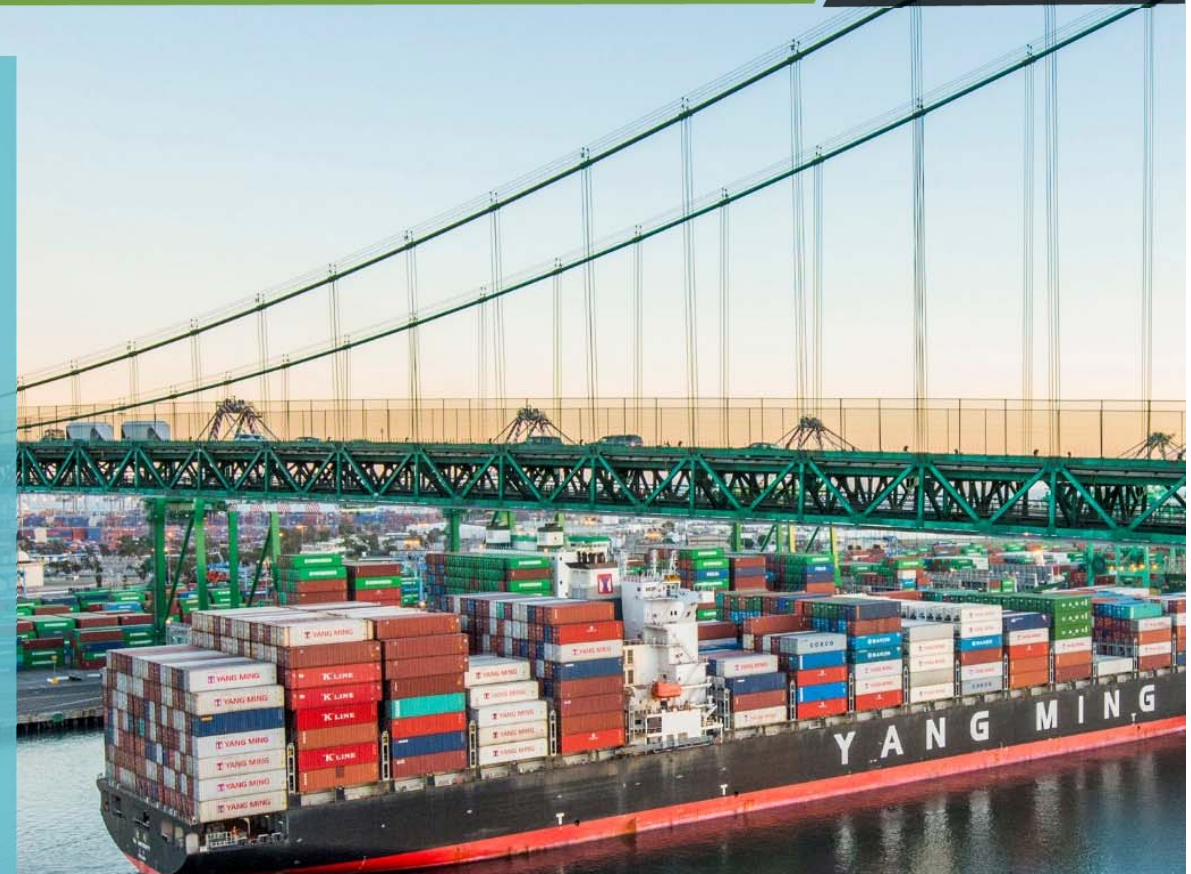
Eric Caris – Director of Marketing
May 9, 2019



PORT OF LOS ANGELES OVERVIEW



- Harbor Department founded in 1907
- State Tidelands Trust granted 1911
- Non-Taxpayer Supported Hybrid Port Model
- Handles Cargo to & from every corner of the U.S.
- By the Numbers:
 - *4,300 acres land*
 - *3,200 acres water*
 - *43 miles of waterfront*
 - *270 berths, 27 terminals*



Record-Breaking 2018
9,458,000 TEUs



Wilmington

Banning's Landing

Long Beach

San Pedro

*San Pedro Bay
1872*

Wilmington

SAN PEDRO BAY TODAY



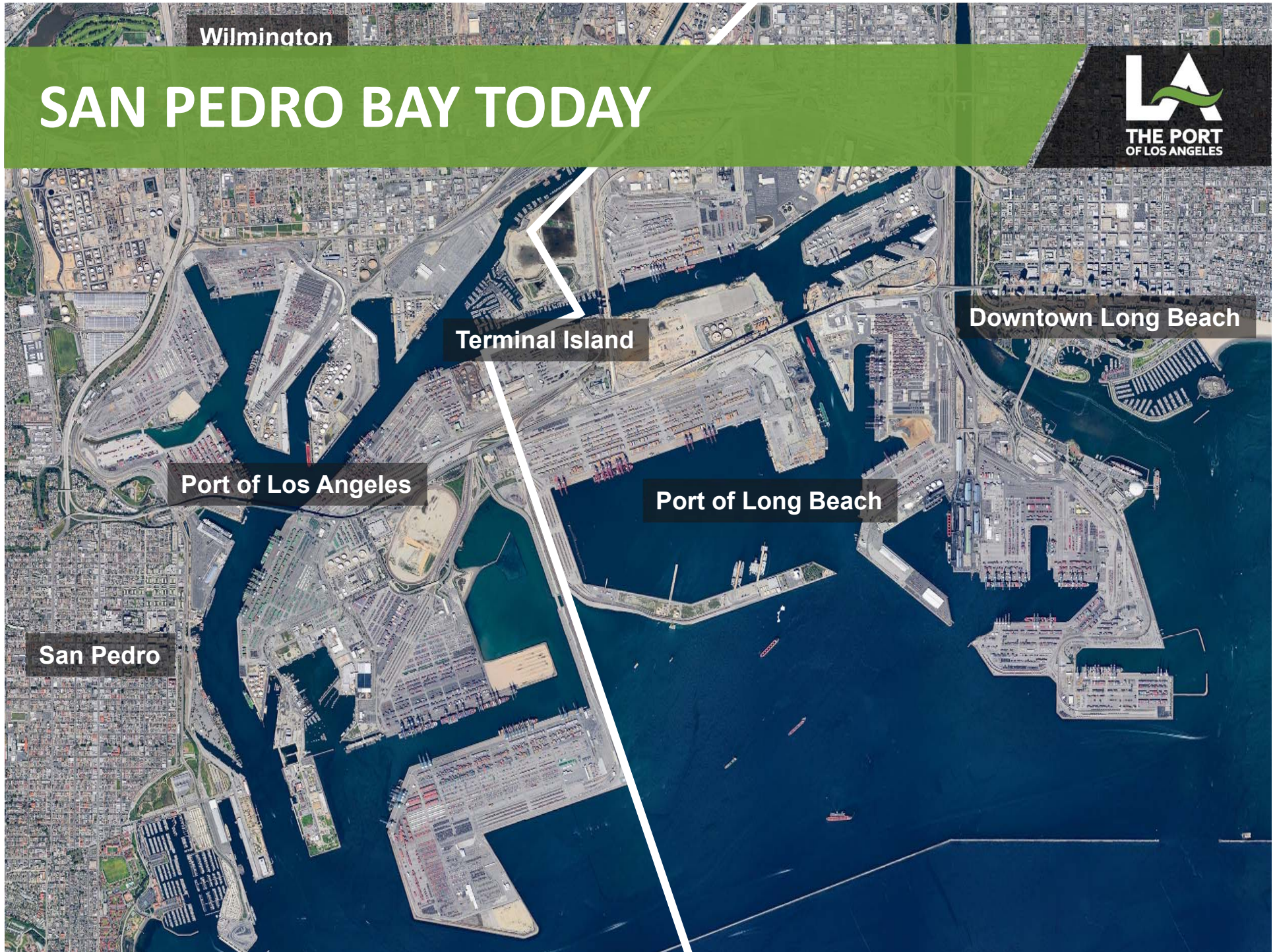
Terminal Island

Downtown Long Beach

Port of Los Angeles

Port of Long Beach

San Pedro



A LOOK BACK – EMPLOYMENT



TURNING POINT: CONTAINERIZATION



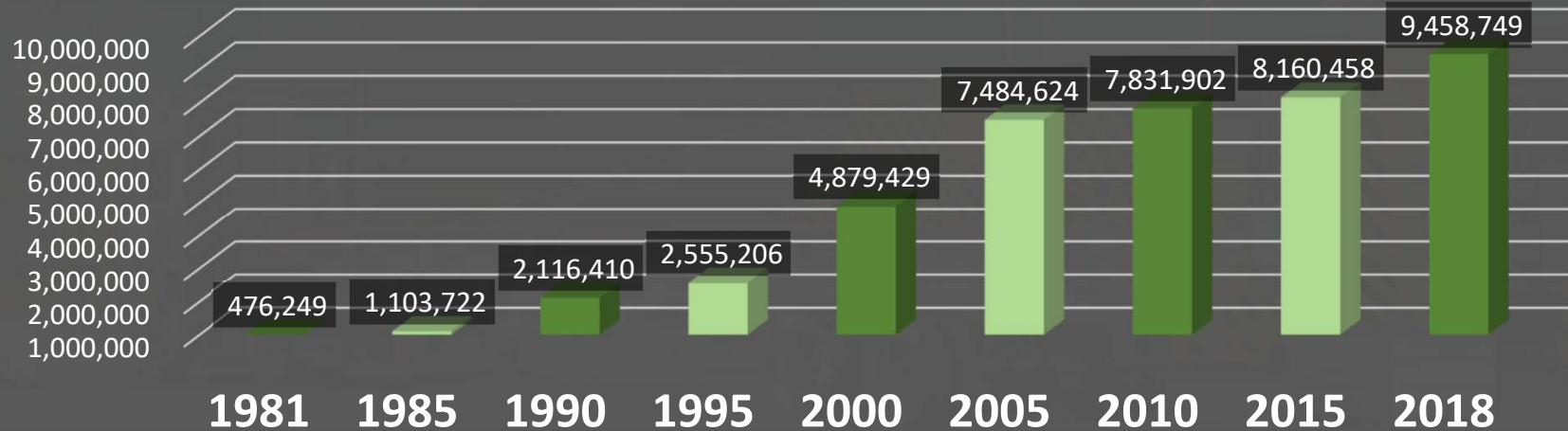
Global Ranking (2017)

1. Shanghai, China	40.2	6. Busan, South Korea	20.5
2. Singapore	33.7	7. Guangzhou, China	20.4
3. Shenzhen, China	25.2	8. Qingdao, China	18.3
4. Ningbo, China	24.6	9. LA & LB (as of 2018)	17.5
5. Hong Kong	20.8	10. Dubai, Arab Emirate	15.4

North American Ranking (2018)

1. Los Angeles	9.4	6. Tacoma/Seattle	3.8
2. Long Beach	8.1	7. Vancouver	3.4
3. NY/NJ	7.2	8. Manzanillo	3.1
4. Panama (AMP)	7.0	9. Hampton Roads	2.9
5. Savannah	4.4	10. Houston	2.7

PORT OF LOS ANGELES - TEU COUNT



TURNING POINT: COMMUNITY PUSH-BACK



- **Berth 100 Container Terminal Development Settlement:**
 - Environmental Impact Report discrepancies
 - \$50 million Air Quality and Esthetics mitigation
- **CLEAN AIR ACTION PLAN (CAAP)**
 - Joint effort between the Port of Los Angeles and the Port of Long Beach
 - Aimed at reducing environmental impact of Port operations
 - CAAP update approved by the Port of Los Angeles and Port of Long Beach Boards of Harbor Commissioners on November 2, 2017

CLEANER THAN EVER

(2005-2017) AIR EMISSIONS REDUCTION



Greenhouse Gases

13%

Nitrogen Oxides

60%

Diesel Particulate Matter

87%

Sulfur Oxides

98%

Container Volume

25%

2023 GOAL

59%

2023 GOAL

77%

2023 GOAL

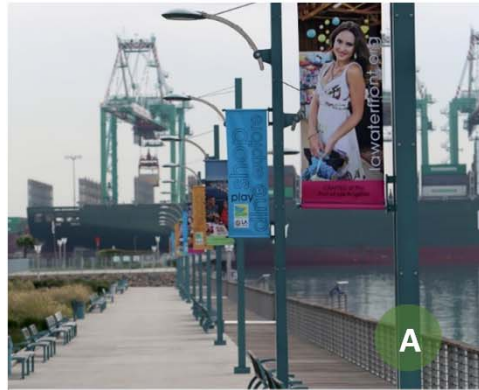
93%



\$600M IN PUBLIC ACCESS INVESTMENT (2005-15)



A CRUISE SHIP PROMENADE
*COMPLETED 2005



B HARBOR BLVD. PARKWAY PROMENADE
*COMPLETED 2006



C GATEWAY PLAZA & FANFARE FOUNTAIN
*COMPLETED 2008



D 22ND STREET PARK
*COMPLETED 2010



E WILMINGTON WATERFRONT PARK
*COMPLETED 2011



F CABRILLO WAY MARINA
*COMPLETED 2011



2015 - PUBLIC ACCESS INVESTMENT PLAN



\$600M

**INVESTMENT
EXISTING**

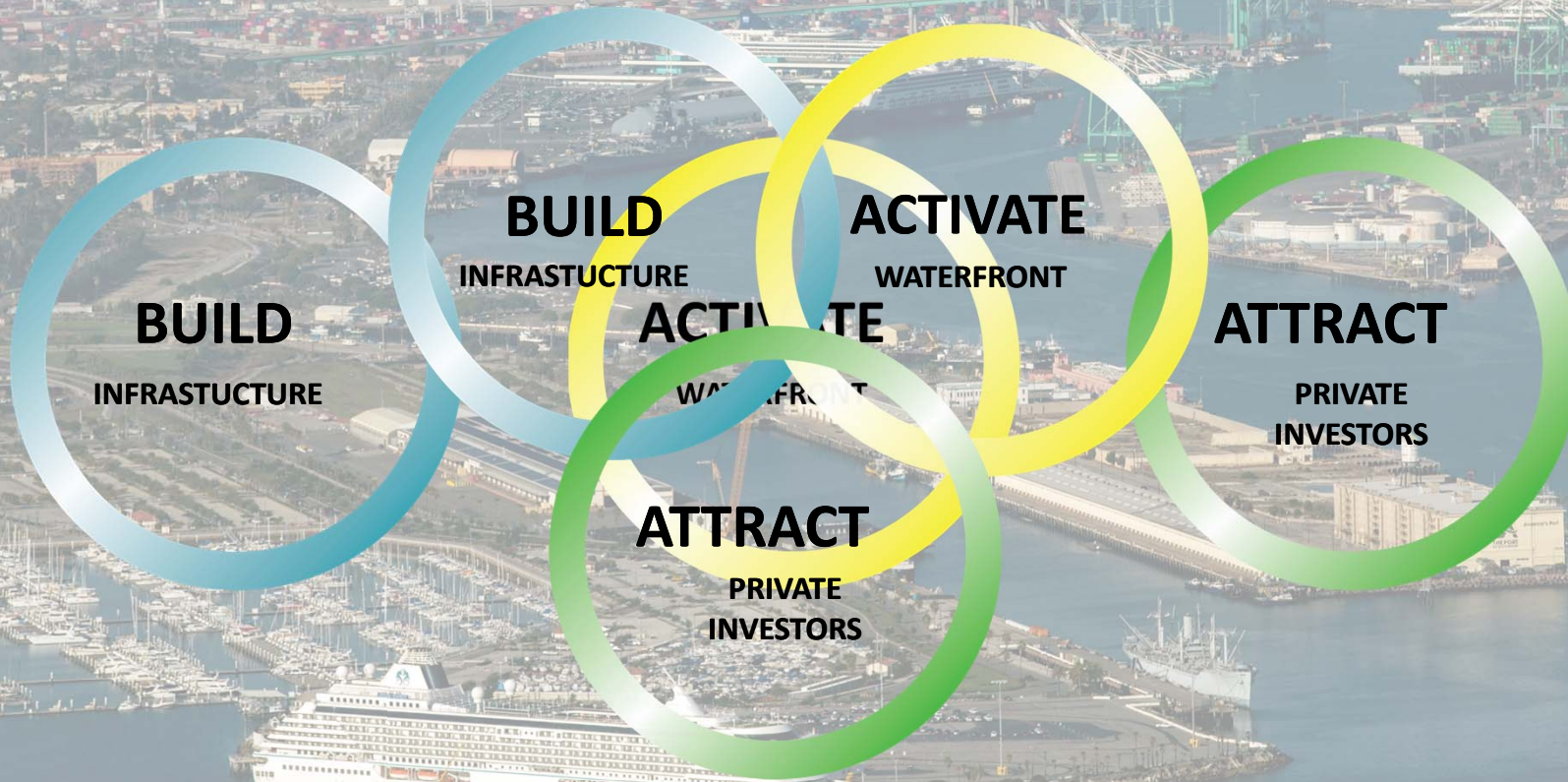
10%

**OF ANNUAL
OPERATING
INCOME**

\$400M

**2015-2025
INVESTMENT
THROUGH
PAIP**

VISITOR-SERVING WATERFRONT STRATEGY



PUBLIC ACCESS INVESTMENT PLAN
PUBLIC INPUT PROCESS



PHASE 1

COMMUNITY
PRESENTATIONS

PHASE 2

COMMUNITY
FEEDBACK

3-4 MONTHS

PHASE 3

BOARD &
COMMENTS

3-4 MONTHS

PUBLIC ACCESS INVESTMENT PLAN PRIORITIZED PROJECTS



- 1 HARBOR BLVD. & 7th STREET IMPROVEMENTS
*COMPLETED 2018
- 2 TOWN SQUARE AT 6th STREET
- 3 SAN PEDRO PUBLIC MARKET PROMENADE
- 4 WILMINGTON WATERFRONT PROMENADE
- 5 AVALON PROMENADE & GATEWAY
- 6 HARRY BRIDGES BEAUTIFICATION

3.14 MILLION VISITORS in 2018





INVESTMENT OPPORTUNITIES

SAN PEDRO PUBLIC MARKET

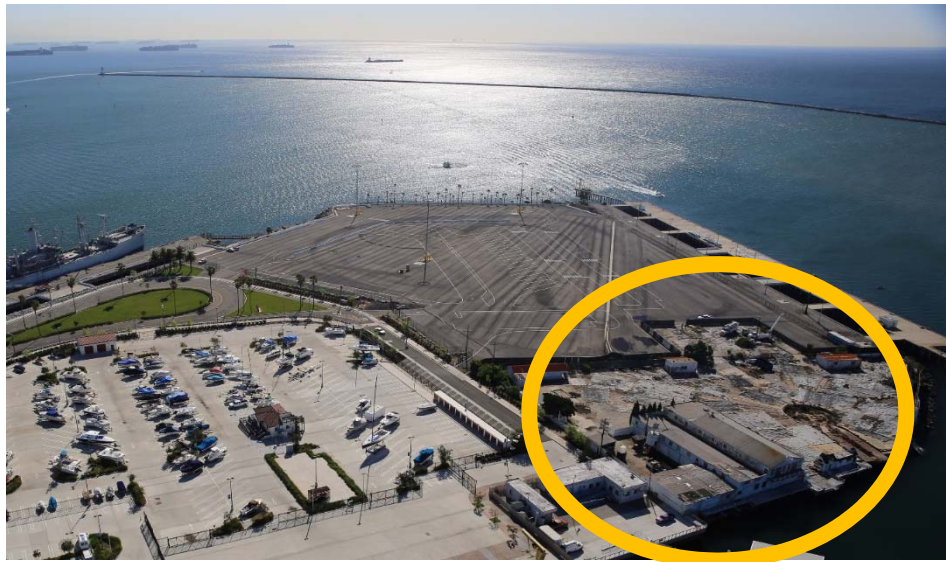


SAN PEDRO
Public Market

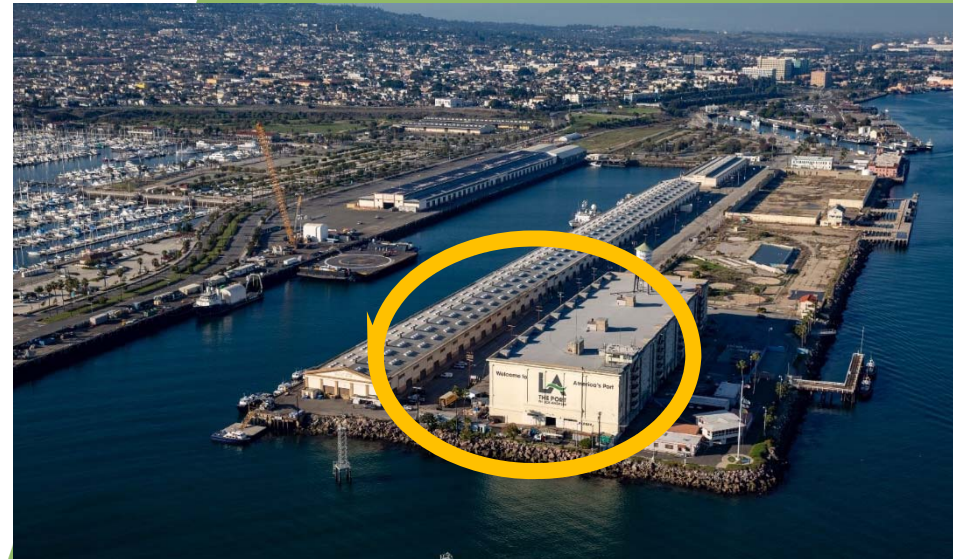
OUTER HARBOR CRUISE BERTH



WATERFRONT AND COMMERCIAL REAL ESTATE



The Port is currently reviewing proposals for a boat repair & maintenance facility at B44 in the outer harbor.

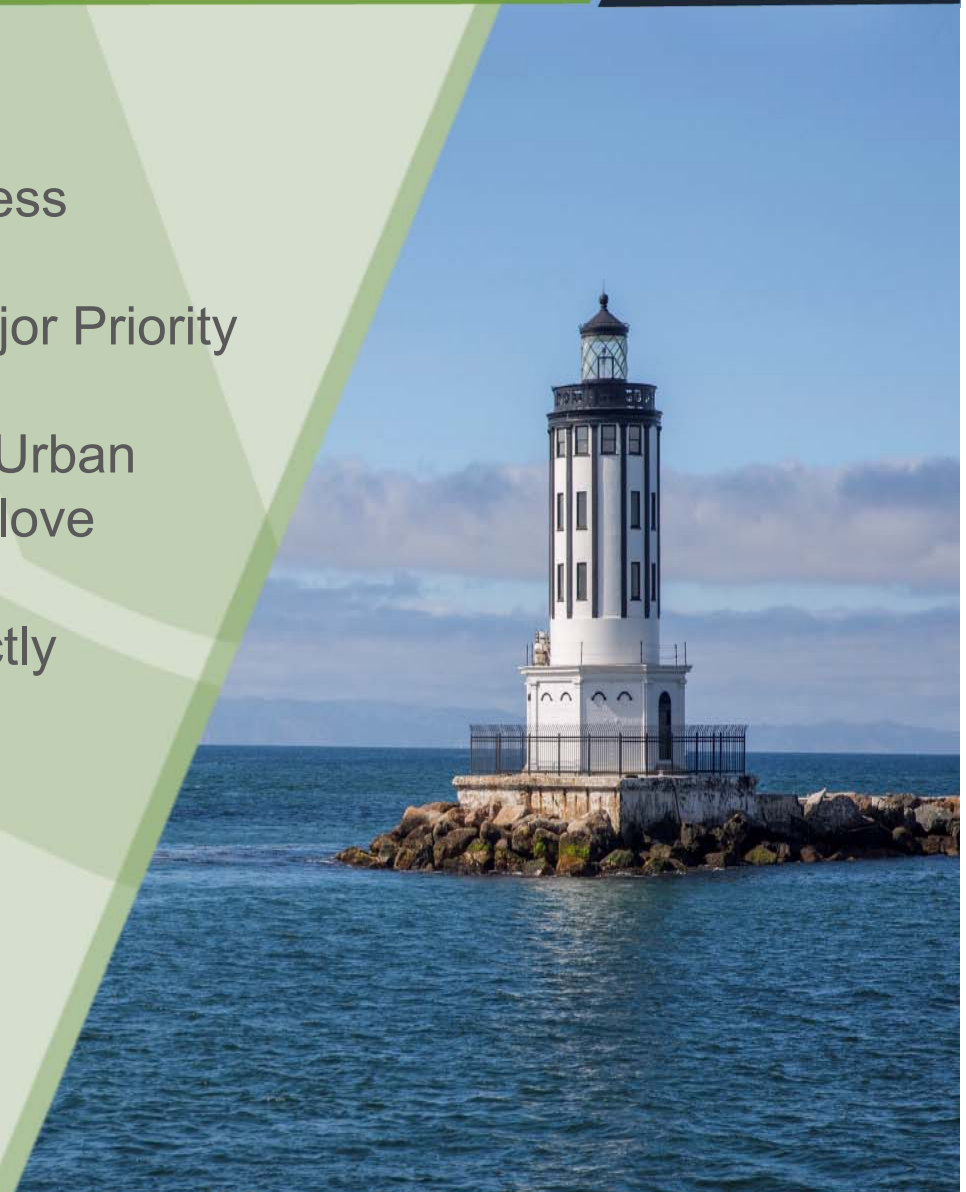


Development opportunities for Warehouse 1

IN CONCLUSION...



- Infrastructure is Key to Our Success
- Environmental Stewardship a Major Priority
- Industrial Port Development and Urban Development can work hand-in-glove
- Public Access Investment is directly connected to the Port's industrial development and success



THANK YOU



**THE PORT
OF LOS ANGELES** 